

Sitwell Nursery & Infant School Weekly Newsletter



Week Commencing 12.01.2026

What's happening in school...

We had a fantastic first week back in school, finding out about all of our wonderful holidays during news time. It sounds like everyone had a lovely break with their families.

It was also an eventful week with the weather! We did end up having a little bit of snow on Friday, but we were able to open (I know that some of the children were a little disappointed about this!) As the roads were clear and the school site was safe, if a child did not attend because of the weather, this has been marked as an unauthorised absence unfortunately.

We have an eventful few weeks coming up, with Stay & Play sessions planned in, Family Learning event for Y2 as well as our spring term parents evening sessions at the beginning of February. The letter about this will be shared soon, so please make sure to read and book in your session when the portal goes live. We really value your engagement in these meetings, and we know that if we work together, our children will make amazing progress this year!

In assembly this week, we are going to be looking at how best to wash our hands. This is to make sure the children understand that washing our hands helps us to stay fit and healthy and if we don't so this well, we could end up being ill from the germs on our hands. In our attendance section this week, I have shared a link about winter illnesses which you may find useful. We know that this time of year is when children may get more unwell than usual but we are happy to provide children with medicine whilst they are at school so their attendance doesn't suffer too much when they are under the weather.

Here's to another brilliant week!

Mrs Peart 😊

WEEKLY ATTENDANCE

Whole school	95.0%
Roses	97.1%
Tulips	95.6%
Bluebells	98.1%
Poppies	95.6%
Snowdrops	93.1%
Sunflowers	96.2%
Buttercups	93.9%
Daisies	89.3%
Daffodils	93.8%

Attendance Zones

96%-100% attendance is seen as good attendance, and as a school we aim for every child to achieve this target. Sitwell Infant School uses 'attendance zones' to monitor attendance and provide support.

Red - below 91% Amber - 92% - 95%

Green 96% - 100%

Attendance Ladder

Below you will see the attendance ladder, which shows the impact that days absent from school can have on a child's attainment and well-being. To give children the best chance of success, they need to be in school as often as they possibly can.



Be In SCHOOL
Be On TIME

Attendance matters...

Our attendance last week increased to 95% - well done everyone! 😊 We had a lot more green on the board as well, which I was really pleased about. Who is our winning class this week?

We know that during the winter months, children are more susceptible to becoming unwell. Please see the link below to the NHS website about how to treat different winter illnesses. This is useful guidance and as stated, children are able to come to school with a cough or a cold and we are happy to give them medicine to keep them going through the day. Just pop to reception with your child's medicine to sign a form to enable us to do this.

<https://www.nhs.uk/live-well/is-my-child-too-ill-for-school/>

You can find more information about attendance and absence on our website here:

<https://www.sitwellinfantschool.co.uk/learning-achieving/attendance>

Thank you so much for valuing and supporting your child with excellent attendance. It really does make a difference!

Minutes lost = days lost per year

A couple of minutes here and there doesn't seem like much, but...

When your child misses just... they miss days per year

5 mins per day = 3 days

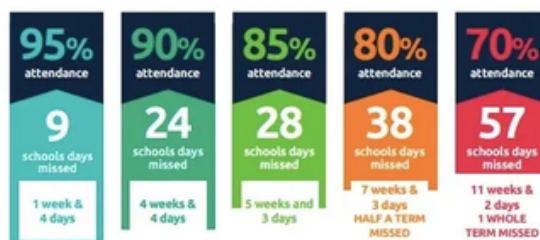
30 mins per day = 18 days



Patterns of lateness can have a serious impact on your child's education.

education.nsw.gov.au

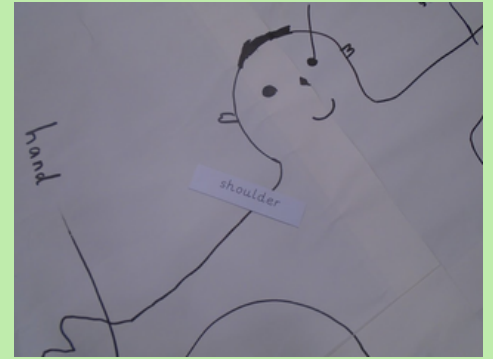
Every day in school counts...



and every minute counts...



This week in pictures



Upcoming Events

SPRING TERM 2025

**JANUARY
05**

School Reopens

School reopens after Christmas break. Welcome back everyone.

**FEBRUARY
10**

Safer Internet Day

Children will be learning all about how to stay safe online.

**JANUARY
26**

Year 2 Family Learning Event 13:15-15:15

Ran by Rotherham Creative Learning. Places limited. Information has been emailed out to Y2 families.

**FEBRUARY
12**

School Closes

School closes at the normal time for half term. We reopen on Monday 23rd February 2026.

**JANUARY
27**

Under the Sea - Tea Club 15:15-17:45

Tickets £10 on arbor app. Register your child for tea club, top account up and book.

**FEBRUARY
13**

INSET DAY

School closed today for teacher training.

**FEBRUARY
2**

Parents Evening Buttercup Class Only 15:20-18:00

Letter to be sent out in due course with information about how to book

**FEBRUARY
3**

Parents Evening 15:20-18:00

Letter to be sent out in due course with information about how to book

**FEBRUARY
4**

PTA Afternoon Tea Party

Please find information below about this event and how to book. Tickets are limited!

**FEBRUARY
5**

Parents Evening 15:20-18:00

Letter to be sent out in due course with information about how to book (excluding Buttercups)

**FEBRUARY
6**

NSPCC Number Day

Staff and children dress up linked to numbers for a small donation.



STAY & PLAY


SITWELL NURSERY & INFANT SCHOOL

Stay and Play

Buttercup & Rose Classes

Our next stay & play session will be held on
Monday 19th January at 2:25pm

This will be a 'Stay & Talk' session where we will be discussing the importance of oracy & talk, and sharing key tips about how you can best support your child with speaking and listening at home.




SITWELL NURSERY & INFANT SCHOOL

Stay and Play

Poppy & Tulip Classes

Our next stay & play session will be held on
Tuesday 20th January at 2:25pm

This will be a 'Stay & Talk' session where we will be discussing the importance of oracy & talk, and sharing key tips about how you can best support your child with speaking and listening at home.



SITWELL NURSERY & INFANT SCHOOL

Stay and Play

Daffodil & Sunflower Classes

Our next stay & play session will be held on
Wednesday 21st January at 2:25pm

This will be a 'Stay & Talk' session where we will be discussing the importance of oracy & talk, and sharing key tips about how you can best support your child with speaking and listening at home.



SITWELL NURSERY & INFANT SCHOOL

Stay and Play

Daisy Class

Our next stay & play session will be held on
Thursday 22nd January at 11:20am (morning children) and again 2:20pm (full day children)

This will be a 'Stay & Talk' session where we will be discussing the importance of oracy & talk, and sharing key tips about how you can best support your child with speaking and listening at home.




SITWELL NURSERY & INFANT SCHOOL

Stay and Play

Bluebell & Snowdrop Classes

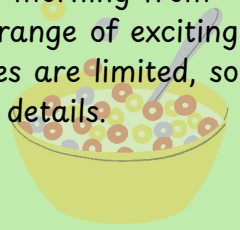
Our next stay & play session will be held on
Friday 23rd January at 2:25pm

This will be a 'Stay & Talk' session where we will be discussing the importance of oracy & talk, and sharing key tips about how you can best support your child with speaking and listening at home.



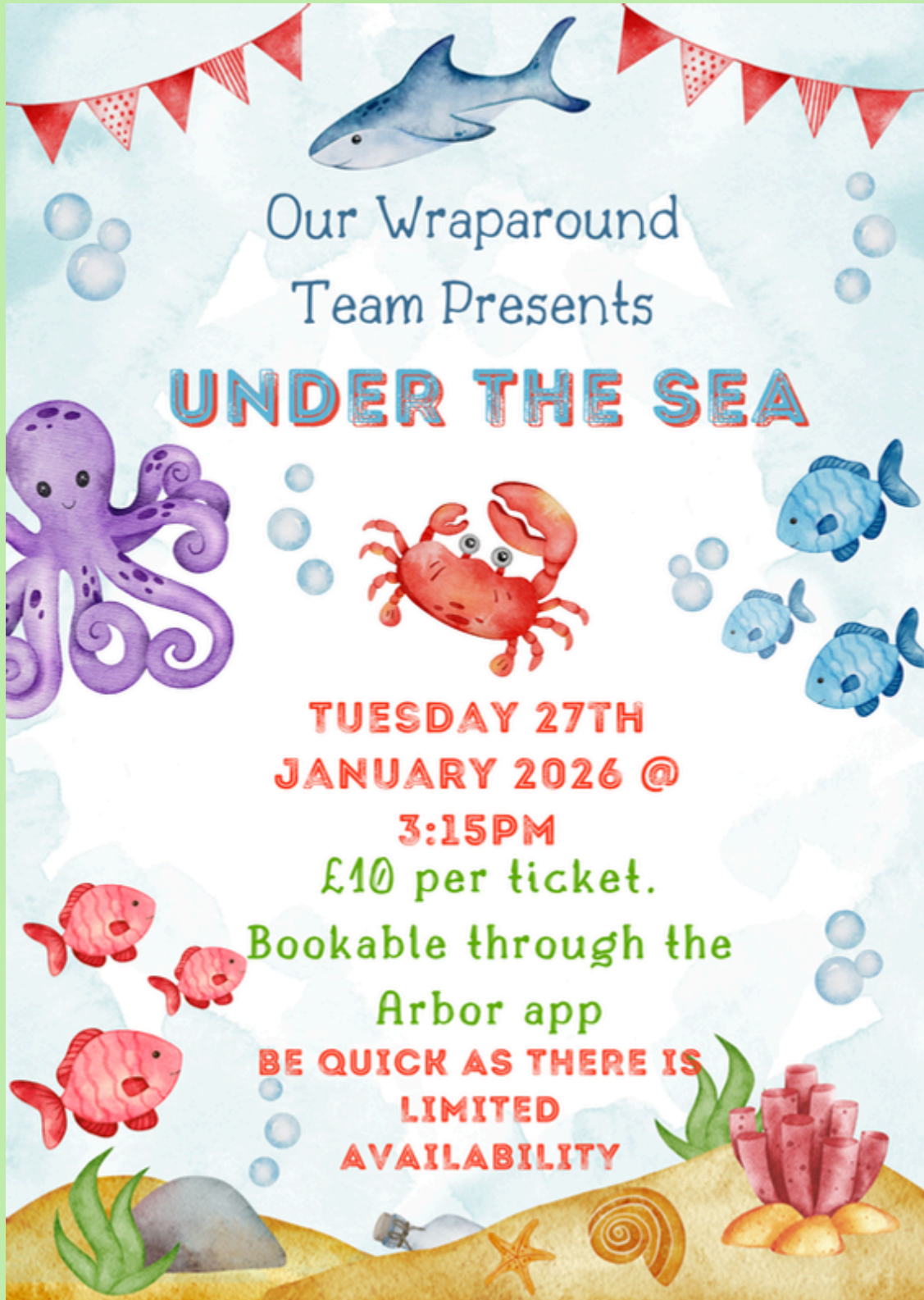
Wrap around Provision

Our Wrap Around Provision is the perfect solution for busy families! We're open every morning from 7:45am to 8:45am and every afternoon from 3:15pm to 5:45pm. Children can enjoy a range of exciting activities and snacks in a safe and familiar environment with our dedicated staff. Spaces are limited, so please book your sessions through Arbor or contact the school office for more details.



Our amazing Tea Club team will be hosting more exciting events.

Our next event is fully booked, however should you wish to book a place, please contact the office.



Safeguarding concerns

If a child comes to school with an injury and we have not been made aware what this may be, as part of our safeguarding procedures, we will speak to the child about how the injury happened. Once we have spoken to the child, we will then contact parents to see what has happened. This is part of our basic safeguarding policy and procedures in school and we have to follow up on these every day. If your child has hurt themselves at home, please do let us know when you drop them off first thing in the morning. As long as there are no further concerns, we will not need to contact you about this.

School Lunches - Parent Pay

Thank you so much for your support with getting up and running again with our lunchtime ordering system. If you have not yet done so, please login to your account so that it is activated. We are currently working with Sitwell Junior School to plan special theme days through the year, which we will share with you when they are happening. Even if your child has packed lunches most of the time, please still login so that you are able to access the special theme days if you want to in the future.

Please also ensure your child's lunches are booked well in advance. The cut off for a school lunch is 8am every day, so it is much better to order your child's lunches at least a week at a time. If you do not order a lunch for your child, you will need to send a packed lunch from home for that day.

Healthy School Lunches

We want to ensure all parents know that we are a nut free school; therefore children are not able to bring any items containing nuts into school with their packed lunch. We have children and adults in school that have severe nut allergies so we need to adhere to this policy in order to keep everyone safe.

Please also ensure that your child's packed lunch is healthy with not too many sweet treats in. We will share the healthy lunch leaflet on Google Classroom to help you ensure their lunch box has food that gives them the nutrition they need each day.

Google Classroom

All children have now been added to their new Google Classroom page, where regular updates about their learning, classroom activities and exciting enrichment activities will be shared each week. Class teachers will update the page once each week, with photographs so that you have a good understanding of their learning journey through the year. We love to hear about the children's learning and adventures at home – please login and share these with the class! The children have a set Google Class News session each week where they look through some of the photographs. This is a lovely way for the children to get to know their new friends and the things they get up to outside of school. We can't wait to read about your news! Contacting the staff team
Each of our classes has a designated email address that you can use to contact the class teacher if you have any concerns or questions. The email addresses are listed below:

roseclass@sitwellinfantschool.co.uk
tulipclass@sitwellinfantschool.co.uk
daffodilclass@sitwellinfantschool.co.uk
bluebellclass@sitwellinfantschool.co.uk
poppyclass@sitwellinfantschool.co.uk
snowdropclass@sitwellinfantschool.co.uk
sunflowerclass@sitwellinfantschool.co.uk
buttercupclass@sitwellinfantschool.co.uk
daisyclass@sitwellinfantschool.co.uk

These email accounts are not checked every day; teachers pick up the emails every few days and will respond to your email as soon as they can within the working day.