

# Sitwell Nursery & Infant School Weekly Newsletter



Week Commencing 19.01.2026

## What's happening in school...

We had another brilliant week of fun and learning last week - I can't believe we are now half way through this half term!

This week sees our new Stay & Play sessions happening, and these sessions are going to focus on Oracy and talk. This is such an important area and one which we are focusing a lot of our teacher training on this year. We are finding that lots of children are starting school with limited speech and vocabulary and we want to work with you to improve this. Over the next few weeks, I am going to be dropping into classes to complete our spring term learning observations. The focus in these lessons will be talk and oracy.

Thank you to those parents who have already signed up for their parents evening meetings during w/c 2<sup>nd</sup> February. It is vital that you attend these meetings to discuss your child's learning and progress.

In assembly this week, Mr McKenzie is talking to the children about active travel and how beneficial it is to travel to school in an active way. We have two cycle/scooter shelters on the school ground if children do travel to school in this way.

Looking forward to next week, we have our Year 2 Family Learning session, which is now full. We do have a waiting list for this - so if you have secured a place and cannot make it, please let us know. **Please note that no siblings are allowed.**

We have now organised our next PTA event - which is an Afternoon Tea session held in the school hall. The PTA will be serving lots of sandwiches, sweet treats, with tea and coffee. Make sure to go onto Arbor to book your ticket!

Mrs Peart 😊

## WEEKLY ATTENDANCE

Whole school	97%
Roses	96.7%
Tulips	93.6%
Bluebells	98.5%
Poppies	96.7%
Snowdrops	100%
Sunflowers	98.6%
Buttercups	96.9%
Daisies	96.3%
Daffodils	90%

### Attendance Zones

96%-100% attendance is seen as good attendance, and as a school we aim for every child to achieve this target. Sitwell Infant School uses 'attendance zones' to monitor attendance and provide support.

Red - below 91%    Amber - 92% - 95%

Green 96% - 100%

## Attendance Ladder

Below you will see the attendance ladder, which shows the impact that days absent from school can have on a child's attainment and well-being. To give children the best chance of success, they need to be in school as often as they possibly can.



## Attendance matters...

Our attendance last week increased again to 9% - well done everyone! 😊 This was above our target of 96%! Attendance in most classes was fantastic last week - amazing! Who is our winning class this week?

### APPOINTMENTS IN SCHOOL TIME

As shared previously, we would prefer it if parents could make appointments for children for the doctors or dentist outside of school time as any missed time in school will mean gaps in learning will happen. We ask that if appointments must be made for emergencies, please try to book these for later on, towards the end of the day. If a child has an appointment first thing in the morning and misses registration, this will be marked as an absence for the whole morning so please avoid this as much as possible.

You can find more information about attendance and absence on our website here:

<https://www.sitwellinfantschool.co.uk/learning-achieving/attendance>

Thank you so much for valuing and supporting your child with excellent attendance. It really does make a difference!

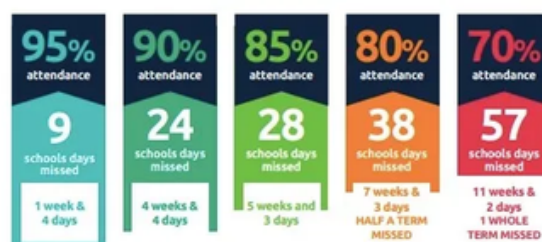
## Minutes lost = days lost per year

A couple of minutes here and there doesn't seem like much, but...



education.nsw.gov.au

## Every day in school counts...



### and every minute counts...



Be In SCHOOL  
Be On TIME

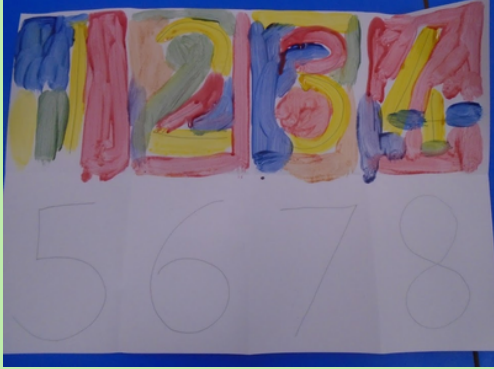


# This week in pictures



Do people with bigger feet have bigger hands?

Name	Shoe size	Hand size (cubes)
Marika	18cm	13cm
Abubakar	21cm	15.5cm
Elliott	19cm	14cm





# Upcoming Events

## SPRING TERM 2025

**JANUARY  
05**

**School Reopens**  
School reopens after Christmas break. Welcome back everyone.

**FEBRUARY  
10**

**Safer Internet Day**  
Children will be learning all about how to stay safe online.

**JANUARY  
26**

**Year 2 Family Learning Event  
13:15-15:15**  
Ran by Rotherham Creative Learning. Places limited. Information has been emailed out to Y2 families.

**FEBRUARY  
12**

**Space Explorers - Tea Club  
15:15-17:45**  
Tickets £10 on arbor app. Register your child for tea club, top account up and book.

**JANUARY  
27**

**Under the Sea - Tea Club  
15:15-17:45**  
Tickets £10 on arbor app. Register your child for tea club, top account up and book.

**FEBRUARY  
12**

**School Closes**  
School closes at the normal time for half term. We reopen on Monday 23rd February 2026.

**FEBRUARY  
2**

**Parents Evening  
Buttercup Class Only  
15:20-18:00**  
Letter to be sent out in due course with information about how to book

**FEBRUARY  
13**

**INSET DAY**  
School closed today for teacher training.

**FEBRUARY  
3**

**Parents Evening  
15:20-18:00**  
Letter to be sent out in due course with information about how to book

**FEBRUARY  
23**

**School Reopens**  
School reopens after February half term. Welcome back everyone.

**FEBRUARY  
4**

**PTA Afternoon Tea Party**  
Please find information below about this event and how to book. Tickets are limited!

**MARCH  
4**

**KS1 Educational Trip  
Yorkshire Wildlife Park**  
During school time. Please order a sandwich option should you wish your child to take a school lunch

**FEBRUARY  
5**

**Parents Evening  
15:20-18:00**  
Letter to be sent out in due course with information about how to book (excluding Buttercups)

**MARCH  
6**

**World Book Day**  
During school time. Please order a sandwich option should you wish your child to take a school lunch

**FEBRUARY  
6**

**NSPCC Number Day**  
Staff and children dress up linked to numbers for a small donation. Letter has been sent to families. Poster below

**MARCH  
10**

**Reception Educational Trip  
Austerfield**  
During school time. Please order a sandwich option should you wish your child to take a school lunch

# STAY & PLAY


SITWELL NURSERY & INFANT SCHOOL

## Stay and Play

**Buttercup & Rose Classes**

Our next stay & play session will be held on  
**Monday 19<sup>th</sup> January at 2:25pm**

This will be a 'Stay & Talk' session where we will be discussing the importance of oracy & talk, and sharing key tips about how you can best support your child with speaking and listening at home.




SITWELL NURSERY & INFANT SCHOOL

## Stay and Play

**Poppy & Tulip Classes**

Our next stay & play session will be held on  
**Tuesday 20<sup>th</sup> January at 2:25pm**

This will be a 'Stay & Talk' session where we will be discussing the importance of oracy & talk, and sharing key tips about how you can best support your child with speaking and listening at home.



SITWELL NURSERY & INFANT SCHOOL

## Stay and Play

**Daffodil & Sunflower Classes**

Our next stay & play session will be held on  
**Wednesday 21<sup>st</sup> January at 2:25pm**

This will be a 'Stay & Talk' session where we will be discussing the importance of oracy & talk, and sharing key tips about how you can best support your child with speaking and listening at home.



SITWELL NURSERY & INFANT SCHOOL

## Stay and Play

**Daisy Class**

Our next stay & play session will be held on  
**Thursday 22nd January at 11:20am (morning children) and again 2:20pm (full day children)**

This will be a 'Stay & Talk' session where we will be discussing the importance of oracy & talk, and sharing key tips about how you can best support your child with speaking and listening at home.




SITWELL NURSERY & INFANT SCHOOL

## Stay and Play

**Bluebell & Snowdrop Classes**

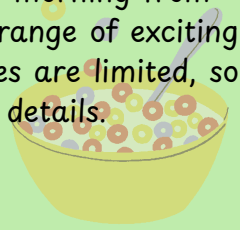
Our next stay & play session will be held on  
**Friday 23<sup>rd</sup> January at 2:25pm**

This will be a 'Stay & Talk' session where we will be discussing the importance of oracy & talk, and sharing key tips about how you can best support your child with speaking and listening at home.



## Wrap around Provision

Our Wrap Around Provision is the perfect solution for busy families! We're open every morning from 7:45am to 8:45am and every afternoon from 3:15pm to 5:45pm. Children can enjoy a range of exciting activities and snacks in a safe and familiar environment with our dedicated staff. Spaces are limited, so please book your sessions through Arbor or contact the school office for more details.



We are excited to announce that we are offering a **\*\*free tester session\*\*** for our **\*\*Tea Club\*\***! This is a wonderful opportunity for children to enjoy and experience all of the fun activities we have to offer. This free session will be a short tea club session, which will require you to pick your child up at 4.30pm.

Please note that this does not include attendance for one of the themed tea club sessions.

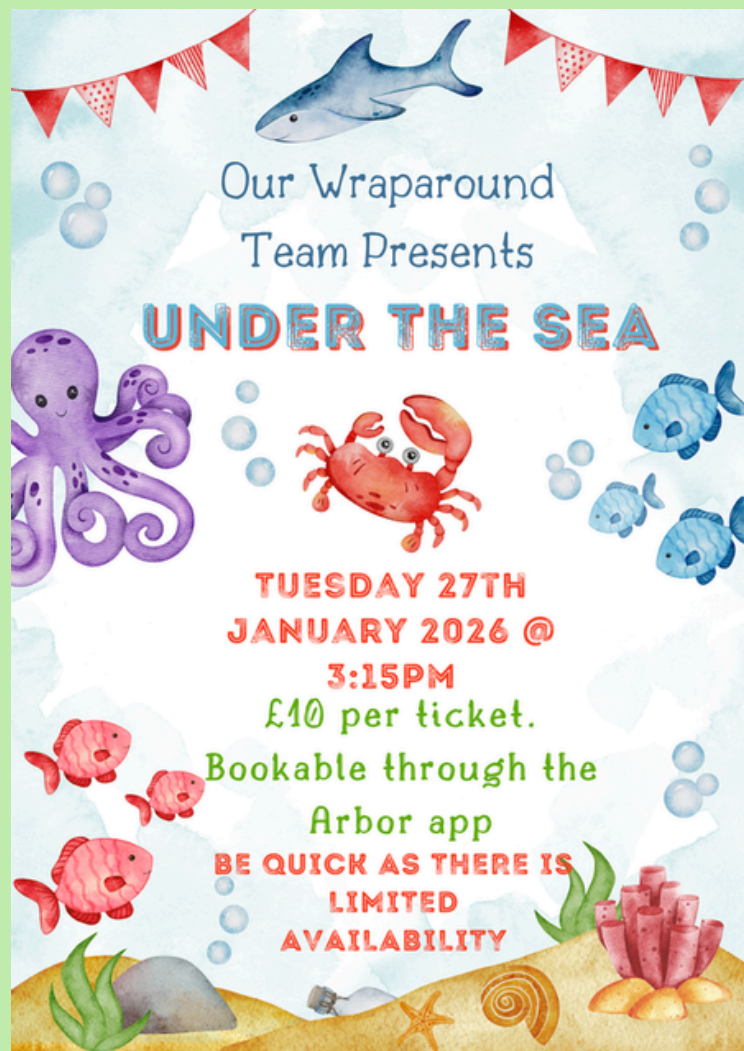
We highly encourage you to sign up for your child for this session. It's completely free of charge, and we believe your child will have a fantastic time meeting new friends and exploring our club's offerings.

If you're interested in signing up, please inform the school office who will add your child to the requested date.



Our amazing Tea Club team will be hosting more exciting events throughout the year.

**Our next event has only a few places remaining - please contact the office to book a place.**





# PTA Event



SITWELL NURSERY AND INFANT SCHOOL  
PTA  
PRESENTS

## AFTERNOON TEA

**WED 4TH FEBRUARY  
2 PM TIL 3PM**

**£10 FOR 1 ADULT AND 1 CHILD  
ADDITIONAL £3 FOR EXTRA CHILD**



a selection of sandwiches, cakes  
a selection of sweet treats  
pot of tea and coffee



BOOK PLACES AND PAY THROUGH YOUR ARBOR ACCOUNT.  
TICKETS ARE AVAILABLE IN THE SCHOOL SHOP BUT SPACES ARE  
LIMITED.

IF YOU WANT TO ADD ADDITIONAL SIBLINGS, THESE MUST BE  
CHILDREN IN SCHOOL (NO YOUNGER OR OLDER SIBLINGS  
ALLOWED). PLEASE CONTACT RECEPTION TO BOOK THESE EXTRA  
TICKETS.



How about  
decorating a plain  
t-shirt or wearing  
your favourite  
sports top with  
a number?

# Number Day

## Dress up for Digits 'Be Inspired'



Could you  
be a human  
calculator, dice,  
domino or  
playing card?



Have fun and  
Dress up for Digits!



Tag us online:

# N u m b e r D a y

# NSPCC

EVERY CHILDHOOD IS WORTH FIGHTING FOR

©NSPCC 2025. National Society for the Prevention of Cruelty to Children. Registered charity England and Wales 216401, Scotland SC037717 and Jersey 384. Photography by UGC and Caroline Nicholson on behalf of the NSPCC. J20255114.



## Safeguarding concerns

If a child comes to school with an injury and we have not been made aware what this may be, as part of our safeguarding procedures, we will speak to the child about how the injury happened. Once we have spoken to the child, we will then contact parents to see what has happened. This is part of our basic safeguarding policy and procedures in school and we have to follow up on these every day. If your child has hurt themselves at home, please do let us know when you drop them off first thing in the morning. As long as there are no further concerns, we will not need to contact you about this.

## School Lunches - Parent Pay

Thank you so much for your support with getting up and running again with our lunchtime ordering system. If you have not yet done so, please login to your account so that it is activated. We are currently working with Sitwell Junior School to plan special theme days through the year, which we will share with you when they are happening. Even if your child has packed lunches most of the time, please still login so that you are able to access the special theme days if you want to in the future.

Please also ensure your child's lunches are booked well in advance. The cut off for a school lunch is 8am every day, so it is much better to order your child's lunches at least a week at a time. If you do not order a lunch for your child, you will need to send a packed lunch from home for that day.

## Healthy School Lunches

We want to ensure all parents know that we are a nut free school; therefore children are not able to bring any items containing nuts into school with their packed lunch. We have children and adults in school that have severe nut allergies so we need to adhere to this policy in order to keep everyone safe.

Please also ensure that your child's packed lunch is healthy with not too many sweet treats in. We will share the healthy lunch leaflet on Google Classroom to help you ensure their lunch box has food that gives them the nutrition they need each day.

## Google Classroom

All children have now been added to their new Google Classroom page, where regular updates about their learning, classroom activities and exciting enrichment activities will be shared each week. Class teachers will update the page once each week, with photographs so that you have a good understanding of their learning journey through the year. We love to hear about the children's learning and adventures at home – please login and share these with the class! The children have a set Google Class News session each week where they look through some of the photographs. This is a lovely way for the children to get to know their new friends and the things they get up to outside of school. We can't wait to read about your news! Contacting the staff team  
Each of our classes has a designated email address that you can use to contact the class teacher if you have any concerns or questions. The email addresses are listed below:

roseclass@sitwellinfantschool.co.uk  
tulipclass@sitwellinfantschool.co.uk  
daffodilclass@sitwellinfantschool.co.uk  
bluebellclass@sitwellinfantschool.co.uk  
poppyclass@sitwellinfantschool.co.uk  
snowdropclass@sitwellinfantschool.co.uk  
sunflowerclass@sitwellinfantschool.co.uk  
buttercupclass@sitwellinfantschool.co.uk  
daisyclass@sitwellinfantschool.co.uk

These email accounts are not checked every day; teachers pick up the emails every few days and will respond to your email as soon as they can within the working day.