

Sitwell Nursery & Infant School Weekly Newsletter



Week Commencing 20.04.2026

What's happening in school...

We are beginning another brand new week and the weather is forecasting lots of sunshine this week! Let's hope it stays that way! It has been lovely to see the children being able to enjoy the fine weather and play on the school field.

Thank you so much to everyone that attended our Easter & Eid fair on Friday - it was a huge success! Our PTA have counted up the proceeds and we raised an amazing £290 for school funds! Thank you so much. Our next event is a Cultural Festival in May/June time. We will let you know a definite date shortly and what we will be doing on this date.

Our KS1 classes had a fantastic time at the visit to Yorkshire Sculpture Park. Thank you so much to the adult helpers who came to support. All the classes have uploaded pictures onto their Google Classroom pages - make sure to have a look as they are wonderful!

Don't forget - we have our Rock & Roll themed Tea Club party on 30th April. Make sure to book your child a place before the tickets sell out!

We are also seeking views about our after school enrichment activities and wraparound care - please do give your views by clicking [here](#). The questionnaire will close on Friday 1st May.

The Lost Property box in the school entrance is very full - please make sure to check if your child has lost any items. We will clear it out on Friday afternoon and any items leftover will be added to our second hand uniform rail if they are not collected.

Have a wonderful week everyone!

Mrs Peart

WEEKLY ATTENDANCE

Whole school	93.95%
Roses	97.94%
Tulips	98.3%
Bluebells	91.5%
Poppies	97%
Snowdrops	99.3%
Sunflowers	95.2%
Buttercups	85%
Daisies	89.3%
Daffodils	87.5%

Attendance Zones

96%-100% attendance is seen as good attendance, and as a school we aim for every child to achieve this target. Sitwell Infant School uses 'attendance zones' to monitor attendance and provide support.

Red - below 91% Amber - 92% - 95%

Green 96% - 100%

Attendance Ladder

Below you will see the attendance ladder, which shows the impact that days absent from school can have on a child's attainment and well-being. To give children the best chance of success, they need to be in school as often as they possibly can.



Attendance matters...

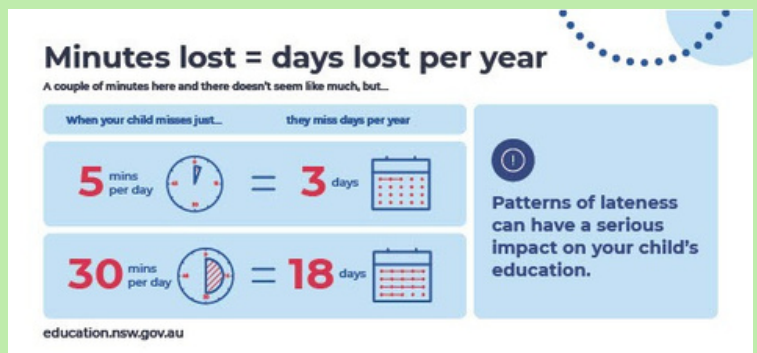
Our attendance has been lower recently due to illnesses. Let's hope with the better weather, the figures will increase again. I wonder who our class attendance winner is for last week before the holidays?

Absence procedures

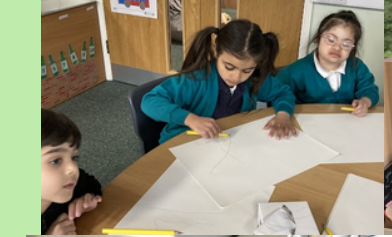
- Parents are required to contact the school office via telephone before 9.15am on the first day of their child's absence; you will be expected to provide an explanation for the absence and an estimation of how long the absence will last, e.g. one school day.
- Where a child is absent, and their parent has not contacted the school by the close of the morning register to report the absence, staff in the office will contact parents by telephone as soon as possible.
- We will always follow up any absences in order to:
 - Ascertain the reason for the absence.
 - Ensure the proper safeguarding action is being taken.
 - Identify whether the absence is authorised or not. Identify the correct code to use to enter the data onto the school census system.

You can find more information about attendance and absence on our website here:

<https://www.sitwellinfantschool.co.uk/learning-achieving/attendance>



This week in pictures



Upcoming Events

SUMMER TERM 2025

**MARCH
27**

School Closes
School closes at the normal time for half term. We reopen on Monday 13th April 2026.

**MAY
13**

**Sensory Bus Visit
Daffodil Class**
Educational visit for Daffodil class.

**APRIL
13**

School Reopens
School reopens after the Easter holidays.

**MAY
20**

**Carnival Party - Tea Club
15:15-17:45**
Tickets £12 on arbor app. Register your child for tea club, top account up and book.

**APRIL
16**

**KS1 Educational Visit to
Yorkshire Sculpture Park**
During school time. Letter has been sent out. Cut off for ordering school packed lunch is Monday 13th April.

**MAY
22**

School Closes
School closes at the normal time for half term. We reopen on Tuesday 2nd June 2026.

**APRIL
17**

**PTA
Eid & Easter Fair**
See information poster below.

**JUNE
1**

School closed
School closed for staff training.

**APRIL
30**

**Rock & Roll Party - Tea Club
15:15-17:45**
Tickets £12 on arbor app. Register your child for tea club, top account up and book.

**JUNE
2**

School Reopens
School reopens after half term. Welcome back everyone!

**MAY
1**

School Closes - Bank Holiday
School closes at the normal time for May Day. We reopen on Tuesday 5th May

**MAY
7**

**FS2 Eye Screening
Sunflower Class**
Consent forms have been sent out for completion.

**MAY
15**

**FS2 Eye Screening
Buttercup Class**
Consent forms have been sent out for completion.

Wrap around Provision

Our Wrap Around Provision is the perfect solution for busy families! We're open every morning from 7:45am to 8:45am and every afternoon from 3:15pm to 5:45pm. Children can enjoy a range of exciting activities and snacks in a safe and familiar environment with our dedicated staff. Spaces are limited, so please book your sessions through Arbor or contact the school office for more details.



We are excited to announce that we are offering a ****free tester session**** for our ****Tea Club****! This is a wonderful opportunity for children to enjoy and experience all of the fun activities we have to offer. This free session will be a short tea club session, which will require you to pick your child up at 4.30pm.

Please note that this does not include attendance for one of the themed tea club sessions.

We highly encourage you to sign up for your child for this session. It's completely free of charge, and we believe your child will have a fantastic time meeting new friends and exploring our club's offerings.

If you're interested in signing up, please inform the school office who will add your child to the requested date.



Our amazing Tea Club team will be hosting more exciting events throughout the year.

**Next up we have our Rock & Roll Party followed by our Carnival Party.
Bookable through Arbor Clubs - Themed Tea Club**



ABM Theme Day Menu

ABM, our catering company, will be organising some great theme day menus after the holidays. You can book these on Parent Pay directly. They all sound delicious!

