

Sitwell Nursery & Infant School Weekly Newsletter



Week Commencing 23.03.2026

What's happening in school...

And just like that... we are in the final week of the Spring term. It has gone by so quickly - we have had a super busy term with lots of special events and visits happening. It has been fantastic to see so much super learning happening - especially during our half term of reading! I have loved seeing some of your pictures already of the Sitwell Superhero reading challenge!

We hope all our families celebrating had a wonderful Eid last week. It has been lovely to see some of the photos on Google Classroom of your special day. We hold an annual Eid Party in school later on in the year. More information will be shared next term.

We raised a whopping **£187** from our Comic Relief celebrations last week - thank you so much for your generous contributions for this worthy cause. Our brilliant PTA are planning an Easter & Eid fair on Friday 17th April. Take a look further down for the poster with all the details. We are having a competition for an Eid Card and an Easter Egg - make sure to bring them in before Friday for the PTA to choose their winners.

Our Reception classes (Buttercups & Sunflowers) are going on a short walk to the post box on Thursday afternoon - if you are available and would like to help us out, please let Miss Todd or Mrs Johnson know.

School will close on Friday 27th March and we reopen on Monday 13th April at the usual time. We hope you all enjoy a lovely Easter holiday with your families.

Mrs Peart

WEEKLY ATTENDANCE

Whole school	82.6%
Roses	77.1%
Tulips	88.3%
Bluebells	83.9%
Poppies	86.7%
Snowdrops	84.1%
Sunflowers	87.6%
Buttercups	77.9%
Daisies	72.2%
Daffodils	83.8%

Attendance Zones

96%-100% attendance is seen as good attendance, and as a school we aim for every child to achieve this target. Sitwell Infant School uses 'attendance zones' to monitor attendance and provide support.

Red - below 91% Amber - 92% - 95%

Green 96% - 100%

Attendance Ladder

Below you will see the attendance ladder, which shows the impact that days absent from school can have on a child's attainment and well-being. To give children the best chance of success, they need to be in school as often as they possibly can.



Attendance matters...

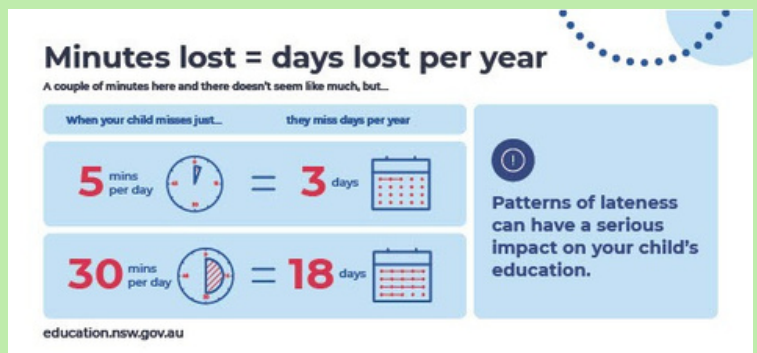
Our attendance last week was a much lower than usual because we had lots of children celebrating Eid on Friday. I am sure it will be back in line with our target next week! Who is our class attendance winner for last week?

Absence procedures

- Parents are required to contact the school office via telephone before 9.15am on the first day of their child's absence; you will be expected to provide an explanation for the absence and an estimation of how long the absence will last, e.g. one school day.
- Where a child is absent, and their parent has not contacted the school by the close of the morning register to report the absence, staff in the office will contact parents by telephone as soon as possible.
- We will always follow up any absences in order to:
 - Ascertain the reason for the absence.
 - Ensure the proper safeguarding action is being taken.
 - Identify whether the absence is authorised or not. Identify the correct code to use to enter the data onto the school census system.

You can find more information about attendance and absence on our website here:

<https://www.sitwellinfantschool.co.uk/learning-achieving/attendance>



This week in pictures



Upcoming Events

SUMMER TERM 2025

MARCH
25

Egg-travaganza - Tea Club **15:15-17:45**

Tickets £10 on arbor app. Register your child for tea club, top account up and book.

MAY
22

School Closes

School closes at the normal time for half term. We reopen on Tuesday 2nd June 2026.

MARCH
27

School Closes

School closes at the normal time for half term. We reopen on Monday 13th April 2026.

JUNE
2

School Reopens

School reopens after half term. Monday 1st June is an INSET Day and school is closed on this day.

APRIL
13

School Reopens

School reopens after the Easter holidays.

APRIL
16

KS1 Educational Visit to Yorkshire Sculpture Park

During school time. Letter has been sent out. Cut off for ordering school packed lunch is Monday 13th April.

APRIL
17

PTA **Eid & Easter Fair**

Information to be sent out in due course.

APRIL
30

Rock & Roll Party - Tea Club **15:15-17:45**

Tickets £12 on arbor app. Register your child for tea club, top account up and book.

MAY
1

School Closes - Bank Holiday

School closes at the normal time for May Day. We reopen on Tuesday 5th May

Wrap around Provision

Our Wrap Around Provision is the perfect solution for busy families! We're open every morning from 7:45am to 8:45am and every afternoon from 3:15pm to 5:45pm. Children can enjoy a range of exciting activities and snacks in a safe and familiar environment with our dedicated staff. Spaces are limited, so please book your sessions through Arbor or contact the school office for more details.



We are excited to announce that we are offering a ****free tester session**** for our ****Tea Club****! This is a wonderful opportunity for children to enjoy and experience all of the fun activities we have to offer. This free session will be a short tea club session, which will require you to pick your child up at 4.30pm.

Please note that this does not include attendance for one of the themed tea club sessions.

We highly encourage you to sign up for your child for this session. It's completely free of charge, and we believe your child will have a fantastic time meeting new friends and exploring our club's offerings.

If you're interested in signing up, please inform the school office who will add your child to the requested date.



Our amazing Tea Club team will be hosting more exciting events throughout the year.

Next up we have our Easter Eggtravaganza.

When we are back after the easter holidays we have our Rock & Roll Party

OUR WRAPAROUND
TEAM PRESENTS
**AN
EGGTRAVIGANZA
TEA PARTY**

Wednesday 25th
March 2026 @ 3:15pm

£10 per ticket. Bookable
through the Arbor App
Limited Availability

See you there!

EGG HUNT

The poster features a green background with a string of colorful triangular bunting at the top. Two cartoon rabbits are shown sitting on decorated Easter eggs. The text is in white and yellow. At the bottom, there are several more decorated Easter eggs and a wooden signpost that says 'EGG HUNT' with an arrow pointing right.

OUR WRAPAROUND TEAM PRESENTS
**ROCK &
ROLL PARTY**

THURSDAY 30TH APRIL 2026

£12 PER TICKET BOOKABLE
THROUGH THE ARBOR APP

LIMITED AVAILABILITY

ROCK ON!

The poster has a black background with neon-style graphics. It features a yellow electric guitar, a purple hand making the 'rock on' gesture, yellow stars, a green lightning bolt, blue musical notes, and a blue hand making the 'rock on' gesture. The text is in white, yellow, and blue.

ABM Theme Day Menu

ABM, our catering company, will be organising some great theme day menus after the holidays. You can book these on Parent Pay directly. They all sound delicious!



PTA EVENT

SITWELL NURSERY AND INFANT SCHOOL
PTA
Presents

EID
&
EASTER
FAIR

Friday 17th April
2.30pm to 4pm

Fun for the whole family
GAMES | STALLS | FACEPAINTING
STALLS AVAILABLE TO BOOK
ENQUIRE WITH SCHOOL OFFICE OR RING 07412227244



EID CARD COMPETITION

1. Design an Eid card that celebrates Eid al-Fitr
2. Your card should show joy, kindness, and Eid traditions like moons, stars, or lanterns.
3. Include a front cover design and a short Eid greeting inside.
4. Write your name and class on the back of the card.
5. You may use pencils, paints, collage materials, or digital tools.
6. The card should be A5 size, in either portrait or landscape.
7. Cards will be judged on creativity, effort, neatness, and how well they show the Eid theme.

EASTER EGG COMPETITION

1. Decorate an Easter egg using colours and patterns.
2. Your design should be bright and creative.
3. You may decorate a real egg, a paper egg template, or a craft egg.
4. Use any safe materials such as paints, markers, collage pieces, or craft decorations.
5. Write your name and class on the back of your design or on a small label.
6. Eggs will be judged on creativity and effort.

DEADLINE FOR ENTRIES IS 27/03/26

WINNERS WILL BE ANNOUNCED AFTER THE HOLIDAYS.

DONATIONS NEEDED

We would appreciate donations of the following items for the fair:

Cakes and baked treats
Asian Food
Books
Toys

VOLUNTEERS NEEDED

We would also appreciate if any parents could help with setting up and manage the stalls.

