

Sitwell Nursery & Infant School Weekly Newsletter

Week Commencing 26.01.2026



What's happening in school...

We are already half way through our third half term, and nearly half way through our whole academic year! I can't believe how quickly time is passing and that this is the last week of January! Time flies when you're having fun!

It was wonderful to see so many of you at our Stay & Play sessions last week - thank you for showing your support. We hope you found the information about Oracy useful. I have shared the PowerPoint and our new 'Conversation Code' posters on Google Classroom this morning so please take a look if you couldn't make the session.

Thank you to those parents who have already signed up for their parents evening meetings during w/c 2nd February. It is vital that you attend these meetings to discuss your child's learning and progress. Please get in touch if you have any difficulty with this.

In assembly this week, Reverend Fox is visiting and he will be talking about Dreams and Goals as this is the theme for our PSHE learning this half term. I talked to the children about setting their intentions at the beginning of January - mine was to try and exercise to keep myself healthy. I wonder how their goals are coming on?

Looking forward to this week, we have our Year 2 Family Learning session, which is now full. We do have a waiting list for this - so if you have secured a place and cannot make it, please let us know. **Please note that no siblings are allowed.**

We have now organised our next PTA event - which is an Afternoon Tea session held in the school hall. The PTA will be serving lots of sandwiches, sweet treats, with tea and coffee. Make sure to go onto Arbor to book your ticket!

Mrs Peart 😊

WEEKLY ATTENDANCE

Whole school	95.9%
Roses	97.5%
Tulips	99.2%
Bluebells	96.9%
Poppies	97%
Snowdrops	94.2%
Sunflowers	94.8%
Buttercups	91.1%
Daisies	95.7%
Daffodils	100%

Attendance Zones

96%-100% attendance is seen as good attendance, and as a school we aim for every child to achieve this target. Sitwell Infant School uses 'attendance zones' to monitor attendance and provide support.

Red - below 91% Amber - 92% - 95%

Green 96% - 100%

Attendance Ladder

Below you will see the attendance ladder, which shows the impact that days absent from school can have on a child's attainment and well-being. To give children the best chance of success, they need to be in school as often as they possibly can.



Attendance matters...

Our attendance last week increased again to 95.9% - well done everyone! 😊 This was in line with our target of 96%! Attendance in most classes was fantastic last week - amazing! Who is our winning class this week?

Mrs Harrand supports Mrs Peart with our attendance and we were so happy to find over 43 children have 100% attendance for the whole year still! This is an amazing accomplishment and a positive letter has been sent out to those parents on Friday. We also have 73 children who are in line or above our 96% target for the year, which is fantastic! We hope to have many more than this by the end of the year!

We have also sent letters out to those families where attendance is a concern to share this with you. Please work with us to improve your child's attendance as this gives them the best chance to make excellent progress.

You can find more information about attendance and absence on our website here:

<https://www.sitwellinfantschool.co.uk/learning-achieving/attendance>

Thank you so much for valuing and supporting your child with excellent attendance. It really does make a difference!

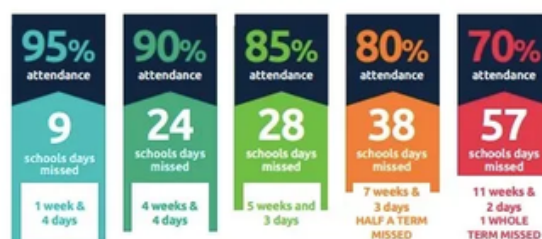
Minutes lost = days lost per year

A couple of minutes here and there doesn't seem like much, but...



education.nsw.gov.au

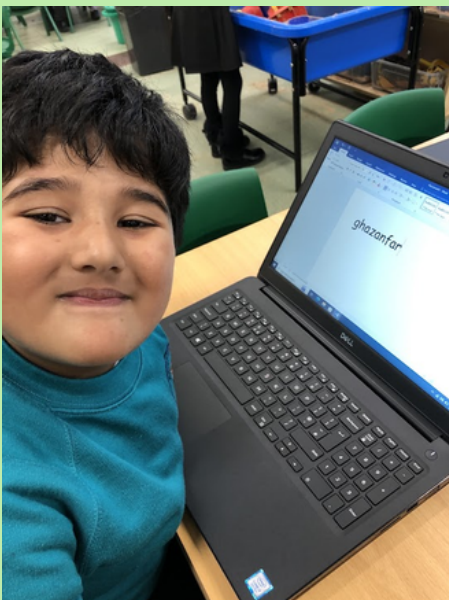
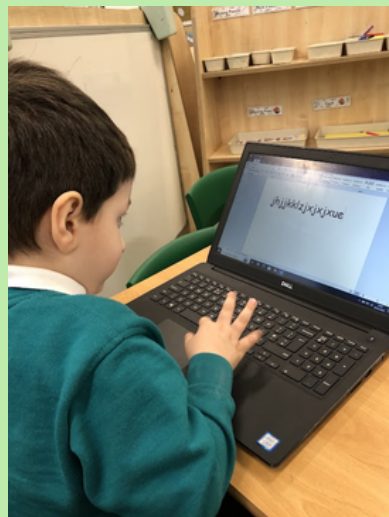
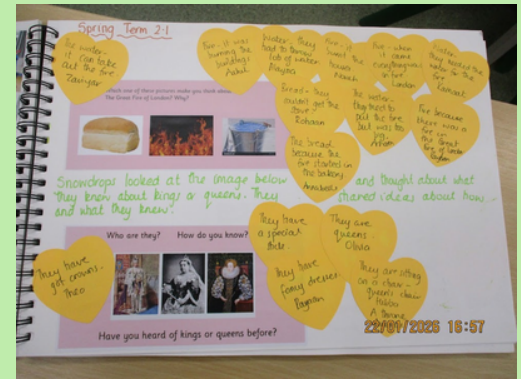
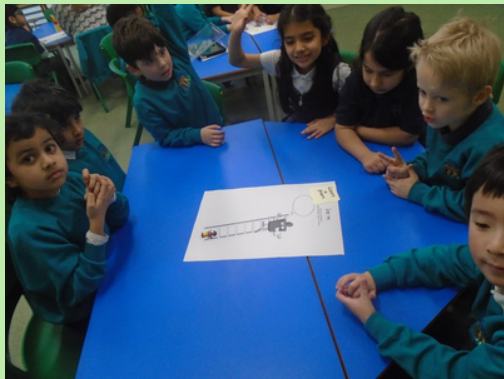
Every day in school counts...



and every minute counts...



This week in pictures



Upcoming Events

SPRING TERM 2025

**JANUARY
05**

School Reopens
School reopens after Christmas break. Welcome back everyone.

**FEBRUARY
10**

Safer Internet Day
Children will be learning all about how to stay safe online.

**JANUARY
26**

**Year 2 Family Learning Event
13:15-15:15**
Ran by Rotherham Creative Learning. Places limited. Information has been emailed out to Y2 families.

**FEBRUARY
12**

**Space Explorers - Tea Club
15:15-17:45**
Tickets £10 on arbor app. Register your child for tea club, top account up and book.

**JANUARY
27**

**Under the Sea - Tea Club
15:15-17:45**
Tickets £10 on arbor app. Register your child for tea club, top account up and book.

**FEBRUARY
12**

School Closes
School closes at the normal time for half term. We reopen on Monday 23rd February 2026.

**FEBRUARY
2**

**Parents Evening
Buttercup Class Only
15:20-18:00**
Now bookable on Arbor - any problems please contact the school office

**FEBRUARY
13**

INSET DAY
School closed today for teacher training.

**FEBRUARY
3**

**Parents Evening
15:20-18:00**
Now bookable on Arbor - any problems please contact the school office

**FEBRUARY
23**

School Reopens
School reopens after February half term. Welcome back everyone.

**FEBRUARY
4**

PTA Afternoon Tea Party
Please find information below about this event and how to book. Tickets are limited!

**MARCH
4**

**KS1 Educational Trip
Yorkshire Wildlife Park**
During school time. Please order a sandwich option should you wish your child to take a school lunch

**FEBRUARY
5**

**Parents Evening
15:20-18:00**
Now bookable on Arbor - any problems please contact the school office (excluding Buttercups)

**MARCH
6**

World Book Day
Details to be sent out in due course

**FEBRUARY
6**

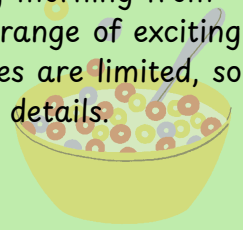
NSPCC Number Day
Staff and children dress up linked to numbers for a small donation. Letter has been sent to families. Poster below

**MARCH
10**

**Reception Educational Trip
Austerfield**
During school time. Please order a sandwich option should you wish your child to take a school lunch

Wrap around Provision

Our Wrap Around Provision is the perfect solution for busy families! We're open every morning from 7:45am to 8:45am and every afternoon from 3:15pm to 5:45pm. Children can enjoy a range of exciting activities and snacks in a safe and familiar environment with our dedicated staff. Spaces are limited, so please book your sessions through Arbor or contact the school office for more details.



We are excited to announce that we are offering a ****free tester session**** for our ****Tea Club****! This is a wonderful opportunity for children to enjoy and experience all of the fun activities we have to offer. This free session will be a short tea club session, which will require you to pick your child up at 4.30pm.

Please note that this does not include attendance for one of the themed tea club sessions.

We highly encourage you to sign up for your child for this session. It's completely free of charge, and we believe your child will have a fantastic time meeting new friends and exploring our club's offerings.

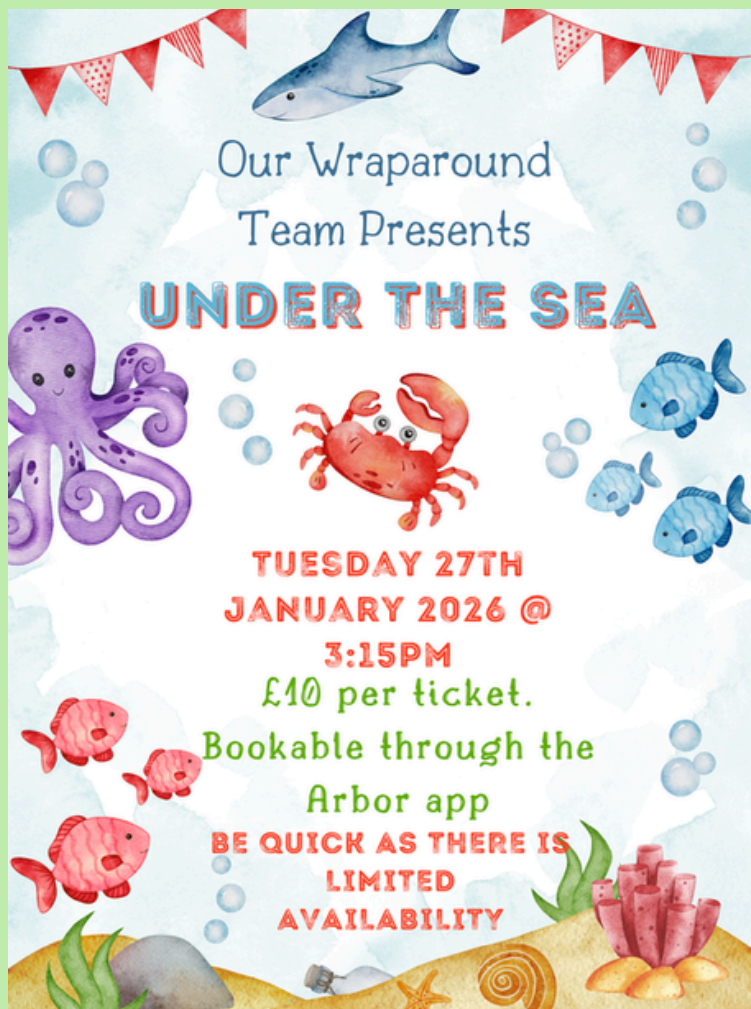
If you're interested in signing up, please inform the school office who will add your child to the requested date.



Our amazing Tea Club team will be hosting more exciting events throughout the year.

Our next event has only a few places remaining - please contact the office to book a place.

Next up we have Space Explorers. Available to book via Arbor.



PTA Event



SITWELL NURSERY AND INFANT SCHOOL
PTA
PRESENTS

AFTERNOON TEA

**WED 4TH FEBRUARY
2 PM TIL 3PM**

**£10 FOR 1 ADULT AND 1 CHILD
ADDITIONAL £3 FOR EXTRA CHILD**



a selection of sandwiches, cakes
a selection of sweet treats
pot of tea and coffee



BOOK PLACES AND PAY THROUGH YOUR ARBOR ACCOUNT.
TICKETS ARE AVAILABLE IN THE SCHOOL SHOP BUT SPACES ARE
LIMITED.

IF YOU WANT TO ADD ADDITIONAL SIBLINGS, THESE MUST BE
CHILDREN IN SCHOOL (NO YOUNGER OR OLDER SIBLINGS
ALLOWED). PLEASE CONTACT RECEPTION TO BOOK THESE EXTRA
TICKETS.



How about
decorating a plain
t-shirt or wearing
your favourite
sports top with
a number?

Number Day

Dress up for Digits 'Be Inspired'



Could you
be a human
calculator, dice,
domino or
playing card?



Have fun and
Dress up for Digits!



Tag us online:

N u m b e r D a y

NSPCC

EVERY CHILDHOOD IS WORTH FIGHTING FOR

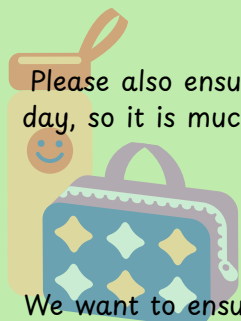
©NSPCC 2025. National Society for the Prevention of Cruelty to Children. Registered charity England and Wales 216401, Scotland SC037717 and Jersey 384. Photography by UGC and Caroline Nicholson on behalf of the NSPCC. J20255114.

Road Safety

We have had numerous complaints over the past couple of weeks about parking and unsafe driving outside of school. Residents who live on Grange Road and Osbert Road have also been in contact with school to complain about our parents blocking their driveways. **This is unacceptable and should never happen.** Please ensure you drive safely around the school area and park in a safe place. You may need to set off earlier and park a little further away from school to help with this. Thank you for your continued support.

School Lunches - Parent Pay

Thank you so much for your support with getting up and running again with our lunchtime ordering system. If you have not yet done so, please login to your account so that it is activated. We are currently working with Sitwell Junior School to plan special theme days through the year, which we will share with you when they are happening. Even if your child has packed lunches most of the time, please still login so that you are able to access the special theme days if you want to in the future.



Please also ensure your child's lunches are booked well in advance. The cut off for a school lunch is 8am every day, so it is much better to order your child's lunches at least a week at a time. If you do not order a lunch for your child, you will need to send a packed lunch from home for that day.

Healthy School Lunches

We want to ensure all parents know that we are a nut free school; therefore children are not able to bring any items containing nuts into school with their packed lunch. We have children and adults in school that have severe nut allergies so we need to adhere to this policy in order to keep everyone safe.

Please also ensure that your child's packed lunch is healthy with not too many sweet treats in. We will share the healthy lunch leaflet on Google Classroom to help you ensure their lunch box has food that gives them the nutrition they need each day.

Google Classroom

All children have now been added to their new Google Classroom page, where regular updates about their learning, classroom activities and exciting enrichment activities will be shared each week. Class teachers will update the page once each week, with photographs so that you have a good understanding of their learning journey through the year. We love to hear about the children's learning and adventures at home - please login and share these with the class! The children have a set Google Class News session each week where they look through some of the photographs. This is a lovely way for the children to get to know their new friends and the things they get up to outside of school. We can't wait to read about your news! Contacting the staff team
Each of our classes has a designated email address that you can use to contact the class teacher if you have any concerns or questions. The email addresses are listed below:

roseclass@sitwellinfantschool.co.uk
tulipclass@sitwellinfantschool.co.uk
daffodilclass@sitwellinfantschool.co.uk
bluebellclass@sitwellinfantschool.co.uk
poppyclass@sitwellinfantschool.co.uk
snowdropclass@sitwellinfantschool.co.uk
sunflowerclass@sitwellinfantschool.co.uk
buttercupclass@sitwellinfantschool.co.uk
daisyclass@sitwellinfantschool.co.uk

These email accounts are not checked every day; teachers pick up the emails every few days and will respond to your email as soon as they can within the working day.