

Spa Camberwell, Southampton Way, SE5 7EW  
A special school for autistic pupils



17<sup>th</sup> April 2026

Dear Parents and Carers,

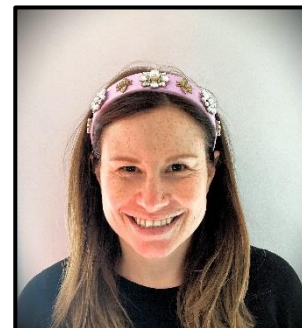
Welcome back. We hope you all had a restful and enjoyable break. It has been wonderful to see our pupils return to school, and to catch up with families as we begin the new term together. We are also delighted to welcome three new teachers to the Spa School community: Suzan, who joins us as the Belair class teacher; Jane, the Neptune class teacher; and Eun-Jung, who will be teaching across a range of classes. We are very pleased to have them with us and look forward to the positive impact their skills, care and dedication will have on our pupils' learning and wellbeing.



Suzan  
Belair class teacher



Eun-Jung  
Class teacher across  
classes



Jane  
Neptune class teacher

### Parent Information Session

On Tuesday, we sent home letters inviting you to a parent information session focused on behaviour and wellbeing support in our school, along with the new Department for Education guidance, "*Restrictive interventions, including the use of reasonable force, in schools.*"

During the session, we will:

- Share our approach to positive behaviour support
- Explain what the new guidance means for our school community
- Provide an opportunity for questions and discussion

Spa Camberwell, Southampton Way, SE5 7EW  
A special school for autistic pupils



We hope you will be able to join us for this important and informative session.

**Date:** Thursday, 23 April 2026

**Primary session:** 09:30 – 10:00

**Secondary session:** 14:30 – 15:00

## Highlights from the Week

### Moving On Up – Transition Event

On Thursday, a group of Key Stage 4 students attended a transition event at the Southbank Centre. This was a valuable opportunity for students to begin exploring their next steps beyond school and to think positively about their future pathways.

Throughout the afternoon, students learned about supported internships, training and further learning opportunities, employment support services, and local children's and adult services.

They also had the chance to meet employers offering opportunities for young people.



Spa Camberwell, Southampton Way, SE5 7EW  
A special school for autistic pupils



### **Michael Rosen Birthday Card Competition**

Next month marks Michael Rosen's 80th birthday. To celebrate, our younger pupils are taking part in a special birthday card competition, with the chance to win a signed and dedicated book. We wish all participants the very best of luck!



### Careers Assembly – Working in the Police

We were pleased to welcome PCSO Sohail Chaudhary to our Key Stage 4 assembly on Friday. PCSO Sohail and his colleagues spoke to students about working in the police, including the personal qualities, skills and qualifications required. He also shared insights into both the rewards and challenges of a career in policing, helping students to make informed decisions about their future. After the assembly, they visited the primary classes.



Spa Camberwell, Southampton Way, SE5 7EW  
A special school for autistic pupils



## Online Safety

### Screen time facts & advice

Internet Matters put together this really helpful guide with tips for parents to help children balance their screen time and create a good digital diet. You can download the guide

[HERE](#)

## Looking Ahead

- **Primary Parent Information Session (Wellbeing & Safety)** – Thursday, 23<sup>rd</sup> April at 9.30
- **Secondary Parent Information Session (Wellbeing & Safety)** – Thursday, 23<sup>rd</sup> April at 2.30
- **Bank Holiday School Closed** – Monday, 4<sup>th</sup> May
- **Last Day of Term** – Friday, 22<sup>nd</sup> May

## Wellbeing Award for Schools

A reminder that parents and carers are invited to complete a short evaluation form about how well the school supports mental health. Please complete the survey using the link [HERE](#)

Thank you for taking the time to share your views.

## Support and activities for families

### Father's Group

Join a 10-week course to improve your parenting skills.

**Date:** Starting 15<sup>th</sup> May 2026

**Time:** Friday mornings at 10:30 am-12:30 pm

**Venue:** 1st Place Best Start Family Hub, 12 Chumleigh Street, London, SE5 0RN.

For more information, email: [Tara.long@southwark.gov.uk](mailto:Tara.long@southwark.gov.uk) or [Jamal.jones-thomas@southwark.gov.uk](mailto:Jamal.jones-thomas@southwark.gov.uk)

Spa Camberwell, Southampton Way, SE5 7EW  
A special school for autistic pupils



### The Men's Space

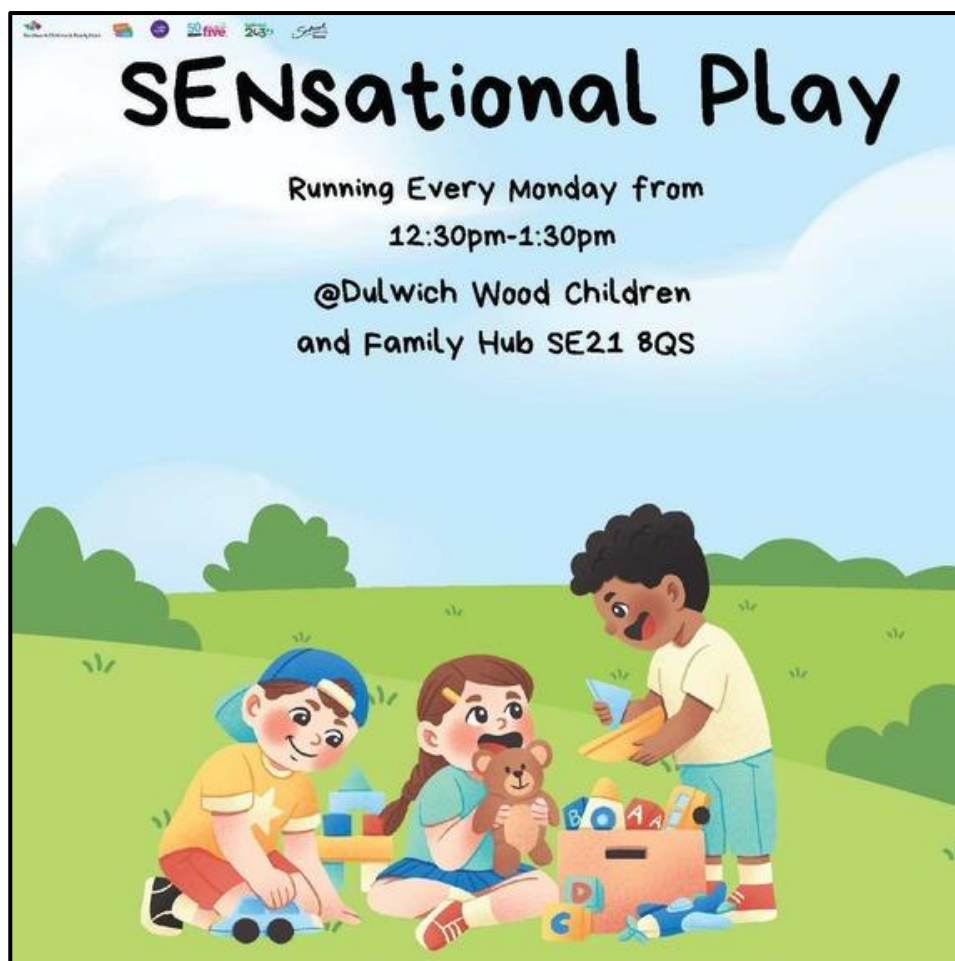
A friendly space for dads and male carers to meet, share experiences, ask questions and get some support.

**Date:** Every last Wednesday of the month

**Time:** Drop-In any time between 09:30 am and 12:20 pm

**Venue:** Rye Oak Bets Start Family Hub, Whorlton Road, London, SE15 3PD.

For more information please visit Rye Oak Best Start Family Hub or email: [parenting@southwatr.gov.uk](mailto:parenting@southwatr.gov.uk)



Spa Camberwell, Southampton Way, SE5 7EW  
A special school for autistic pupils



COME AND HAVE YOUR SAY

# Parent & Carers Forum



A SPACE FOR PARENTS AND CARERS TO COME TOGETHER, SHARE VIEWS, AND HELP SHAPE THE SERVICES AT YOUR LOCAL FAMILY HUB. YOUR VOICE MATTERS!

CRAWFORD SE5 9NF  
Monday 11<sup>th</sup> May 13:00-14:30

DULWICH WOOD SE21 8QS  
Thursday 14<sup>th</sup> May 10:00 -11:30am

FOR MORE INFORMATION EMAIL US AT:  
CDCFCOFFICES@DULWICHWOOD.COM



Spa Camberwell, Southampton Way, SE5 7EW  
A special school for autistic pupils

A large, colorful umbrella with segments in orange, purple, and teal is centered in the background of the poster.

# ONE PLACE, ONE STOP FOR SUPPORT & ADVICE RYE OAK BEST START FAMILY HUB

## WHAT'S ON OFFER

- SUPPORT FOR TEENAGERS
- HOUSING ASSISTANCE
- DEBT, BENEFITS & WELFARE
- SIGNPOSTING ADVICE & GUIDANCE
- FAMILY SUPPORT
- PARENTING SUPPORT
- COMMUNITY PAEDIATRICIAN

We're all here to give you help, advice, support and guidance. If you're a family with children aged 0-19 (25 with SEND) come along to Rye Oak Best Start Family Hub every Wednesday to get all the advice and support you need under one roof

**EVERY WEDNESDAY**  
RYE OAK BEST START FAMILY HUB  
WHORLTON RD, LONDON SE15 3PD

For more information email: [childrenscentre@ivydale.southwark.sch.uk](mailto:childrenscentre@ivydale.southwark.sch.uk)  
or call 020 3848 5780

The footer contains four logos: Southwark Family Hubs (a colorful geometric logo), Best Start in Life (a logo with a person icon), UK Government (the royal coat of arms), and Southwark Council (a stylized logo with the word "Southwark" in script).

Spa Camberwell, Southampton Way, SE5 7EW  
A special school for autistic pupils



## EPEC BEING A PARENT

For parents of children aged 2 – 11 years

This 9 week course helps parents learn practical skills for everyday life.

- Looking after yourself as a parent
- Recognise and manage your children's emotions
- Learn positive parenting strategies
- Support your children's resilience

**JOIN NOW**

Contact: Claire Gager

Email:  
[Claire.gager@southwark.gov.uk](mailto:Claire.gager@southwark.gov.uk)

Call: 07547 659 646



### WHEN IS IT ON?

WEDNESDAYS

STARTING 29TH APRIL 2026

CRAWFORD CENTRE  
5 CRAWFORD RD, LONDON  
SE5 9NF

### What time?

10am-12pm

THURSDAYS

STARTING 30TH APRIL 2026

COIN STREET NEIGHBOURHOOD  
FAMILY & CHILDREN CENTRE  
108 STAMFORD STREET, LONDON SE1 9NH



UK Government



CPCS  
THE CENTRE FOR  
PARENT & CHILD  
SUPPORT



EMPOWERING  
PARENTS  
EMPOWERING  
COMMUNITIES



South London  
and Maudsley  
Health Foundation Trust




Spa Camberwell, **Southampton Way, SE5 7EW**  
A special school for autistic pupils



## SEND reform


Southwark Independent Voice is hosting a coffee morning with Southwark Information Advice Service to help parent carers understand the SEND Reforms and how to participate in this consultation. More information in the flyer below.



## Session for Parents/Carers on the proposed SEND Reform

---

The [SIAS Team](#) & [SIV](#) are delivering a presentation to help you understand the proposed changes to the SEND system and the government White Paper. We will also be supporting you to respond to the consultation with your views.



### SESSION DETAILS

- Date: Thursday 23<sup>rd</sup> April 2026
- Time: 10am - 1pm
- Where: Links Community Centre, SE16 3HF
- Refreshments Provided
- SIAS Team Presentation 11am - 12pm, with consultation support afterwards

### CONTACT

For more information contact the [SIAS Team](#)

✉ [sias@southwark.gov.uk](mailto:sias@southwark.gov.uk) ☎ 020 7525 3104

Spa Camberwell, Southampton Way, SE5 7EW  
A special school for autistic pupils



As always, thank you for your continued support. We wish you and your family a restful and enjoyable weekend.

*Steph Lea*

Steph Lea  
Executive Headteacher