

Communication - Makaton

EVERY INTERACTION IS A
LEARNING OPPORTUNITY



Spa Camberwell School Vision

Happy, safe, healthy
Independent
Ready for the future



How do autistic people experience the world?



Communication Barriers and Challenges

- Literal understanding
- Slower processing and receptive understanding
- Possible delayed speech (receptive/ expressive)
- Possible speech clarity difficulties
- Expressing wants and needs
- Overwhelmed by increased language and talk





What is Makaton

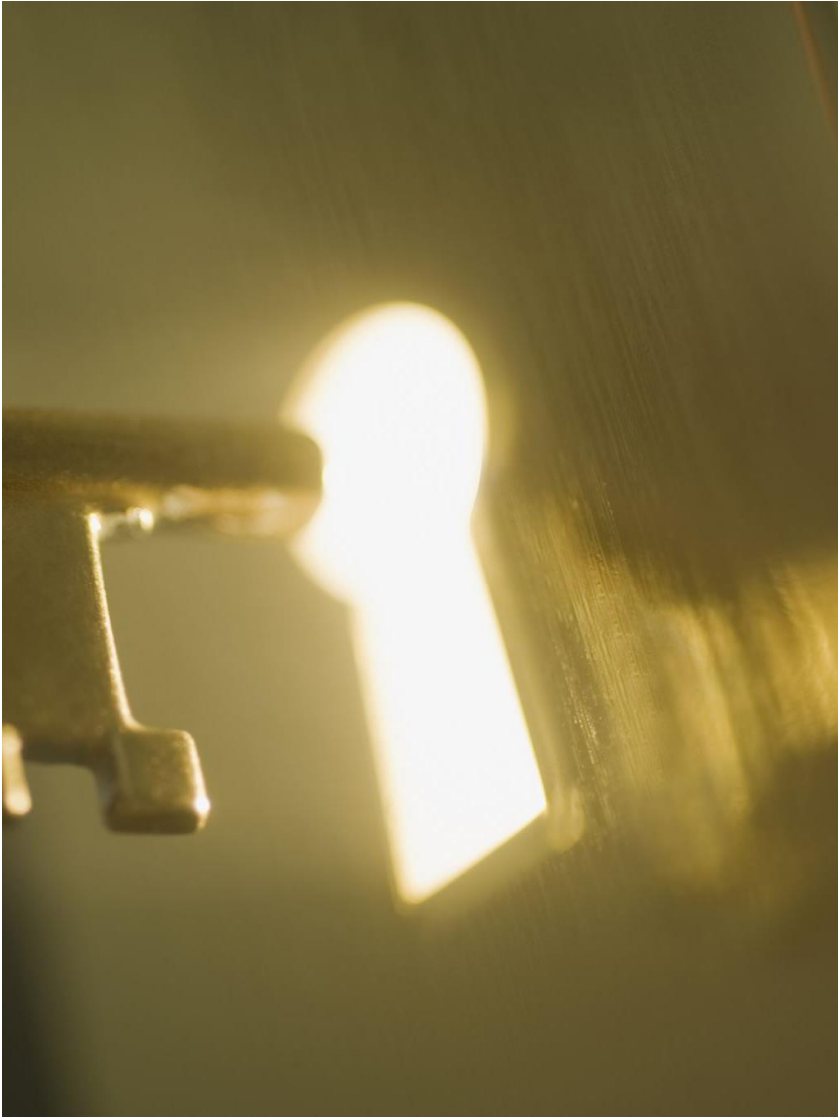
It is a language program that combine **signs**, **symbols** and **speech** to give different options for people to communicate.

Makaton vs Sign Language

Makaton is used to help hearing people with learning or communication difficulties.

BSL is used as the main source of communication for people who are hard of hearing or completely deaf.





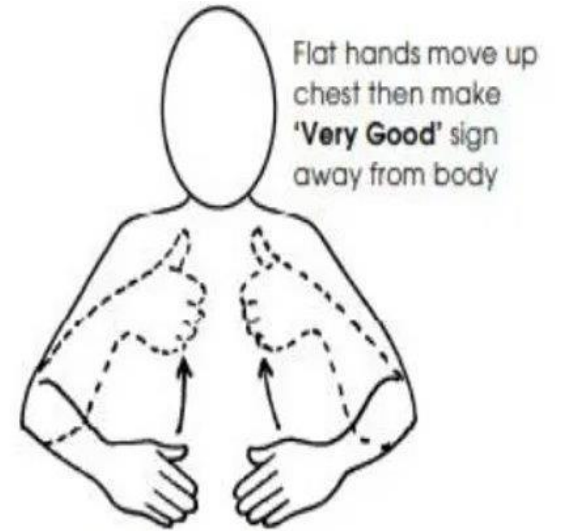
Key principles to remember

- ❖ Sign only key words
- ❖ Say the word loud and clear while signing
- ❖ Begin by signing motivating and familiar vocabulary
- ❖ If your child has developed speech and you want to encourage them to use it, make the sign and wait for them to say the word before you give them what they have requested

Social interaction

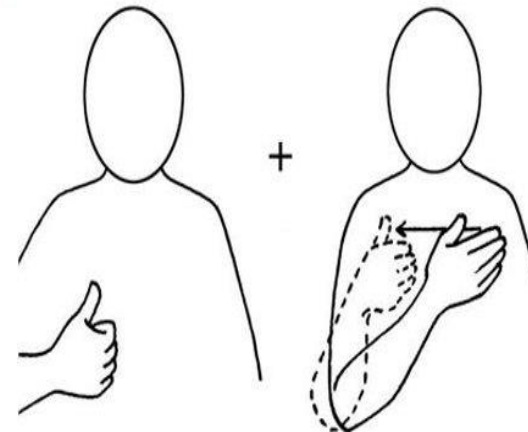


hello



Flat hands move up
chest then make
'Very Good' sign
away from body

How are you?



Good morning

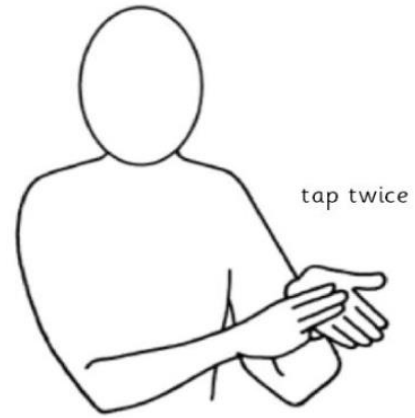


good



happy

Family members



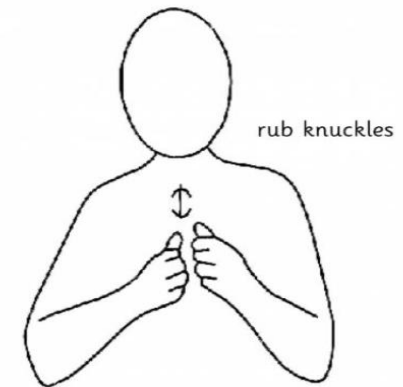
Mother/Mum



Father/Dad



sister



brother

Coming to school



listen



home



toilet



school



wait