

## Children & Young People's Community Speech and Language Therapy Service

# Training for Professionals Parents and Carers

**Training is available to parents and carers in Lambeth and Southwark, and professionals working with children and young people in Lambeth, Southwark and the surrounding areas**

★ **Webinars** ★ **e-Learning** ★ **Classroom** ★

**Have a look at  
our Facebook  
page for training  
updates & tips**



## COURSE LIST

| Page | Course Name  | Suitable for                               | Webinar | e-Learning | Classroom learning |
|------|--|--|---------|------------|--------------------|
| 6    | <b>Accredited Talking Mats</b>   | <b>Professionals, Parents &amp; Carers</b> |         |            | ✓                  |
| 7    | <b>An introduction to stammering</b>   | <b>Professionals, Parents &amp; Carers</b> | ✓       |            |                    |
| 7    | <b>An introduction to working with children with ASD</b>   | <b>Professionals</b>                       | ✓       |            |                    |
| 8    | <b>Autism spectrum disorders in girls</b>  | <b>Professionals</b>                       |         | ✓          |                    |
| 8    | <b>ELKLAN (with Tutorials)</b>   | <b>Professionals</b>                       | ✓       |            |                    |
| 9    | <b>Getting the pupil's view</b>  | <b>Professionals</b>                       |         | ✓          |                    |
| 9    | <b>Identifying &amp; supporting speech, language &amp; communication needs (SLCN) in Early Years</b> | <b>Professionals</b>                       | ✓       |            |                    |
| 10   | <b>Identifying &amp; supporting speech, language &amp; communication needs (SLCN) in schools</b>     | <b>Professionals</b>                       |         | ✓          |                    |
| 11   | <b>Intro to Zones of regulation®</b>   | <b>Professionals</b>                       |         | ✓          |                    |
| 12   | <b>Language development in bilingual children</b>  | <b>Professionals, Parents &amp; Carers</b> |         | ✓          |                    |
| 13   | <b>Lego therapy - an introduction</b>  | <b>Professionals, Parents &amp; Carers</b> | ✓       |            |                    |
| 14   | <b>Makaton taster sessions</b>   | <b>Professionals, Parents &amp; Carers</b> | ✓       |            |                    |
| 15   | <b>Makaton training for professionals, parents &amp; carers x 2</b>                                  | <b>Professionals, Parents &amp; Carers</b> | ✓       |            | ✓                  |
| 16   | <b>Managing infant feeding in the community (accredited)</b>   | <b>Professionals</b>                       |         |            | ✓                  |
| 17   | <b>Paediatric dysphagia</b>  | <b>Professionals</b>                       | ✓       |            | ✓                  |
| 18   | <b>PECS awareness</b>  | <b>Professionals, Parents &amp; Carers</b> |         |            | ✓                  |
| 18   | <b>School starters: transition to primary school</b>   | <b>Parents &amp; Carers</b>                |         | ✓          |                    |
| 19   | <b>See behaviour, think communication</b>  | <b>Professionals</b>                       | ✓       |            |                    |
| 20   | <b>Selective mutism</b>  | <b>Professionals</b>                       |         | ✓          |                    |

## COURSE LIST

| Page | Course Name  | Suitable for                               | Webinar | e-Learning | Classroom learning |
|------|--|--|---------|------------|--------------------|
| 20   | <b>Supporting children with behavioural feeding difficulties</b> | <b>Professionals, Parents &amp; Carers</b> |         | ✓          |                    |
| 21   | <b>Supporting children with Speech sound difficulties</b>        | <b>Professionals</b>                       | ✓       |            |                    |
| 22   | <b>Supporting vocabulary development</b>                         | <b>Professionals</b>                       |         | ✓          |                    |
| 22   | <b>Thinking of a career in SLT</b>                               | <b>Professionals, Parents &amp; Carers</b> | ✓       |            |                    |
| 23   | <b>Transition to secondary school/further education</b>          | <b>Pupils<br/>Parents &amp; Carers</b>     |         | ✓          |                    |
| 23   | <b>Using visuals to support communication</b>                    | <b>Professionals, Parents &amp; Carers</b> |         | ✓          |                    |
| 24   | <b>What do SLTs do in schools?</b>                               | <b>Parents &amp; Carers</b>                |         | ✓          |                    |

## Speech and Language Therapy e-Learning packages

£30 per course or £50 for two

All of our e-Learning packages will be made accessible via an Egress link - instructions on how to access the link will be sent once your booking has been confirmed and payment received.

**When you finish**, we would love to hear what you thought of the e-Learning. You can let us know by clicking on the following link to complete a short survey - this link works best in Google Chrome.

[https://evelinacommunityslt.eu.qualtrics.com/jfe/form/SV\\_02r84axfAs6gxTL](https://evelinacommunityslt.eu.qualtrics.com/jfe/form/SV_02r84axfAs6gxTL)

Certificates will be available on completion of the survey.

### Social media

Follow us on Facebook: <https://www.facebook.com/EvelinaLondonSLT>

We encourage feedback on our e-Learning packages on social media accounts. Use the hashtag #SLT #SpeechAndLanguageTherapy



**\*\*\*All courses are free\* to parents/carers  
of children known to SLT service\*\*\***

**Please email [gst-tr.contacts@nhs.net](mailto:gst-tr.contacts@nhs.net) for further information**

**Bespoke training available on request**

\*apart from Makaton Level 1 and 2 Workshops

## How to apply for a course / e-Learning

To apply for a course, please email [gst-tr.contacts@nhs.net](mailto:gst-tr.contacts@nhs.net) giving the following information:

### Parent/carer(s)

- Name/s
- Course you are applying for
- Number of places you would like
- Contact number
- Post code
- Borough

### Professionals

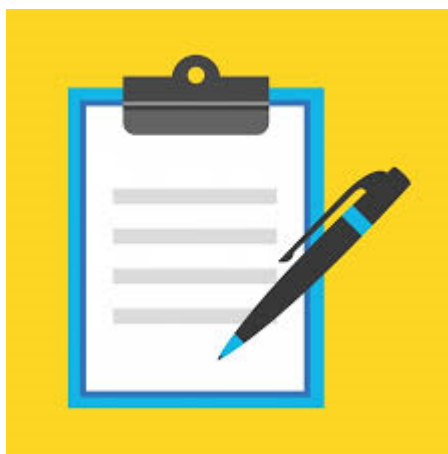
- Name/s
- Course you are applying for
- Number of places you would like
- Name of organisation
- Name of finance contact, finance contact number and email address to send the invoice to (if applicable)
- Purchase order number (if applicable)

Please contact us at the email address above if you would like to discuss bespoke training for your setting.

Have a look at our Facebook page for training updates & tips.

**Your organisation will be charged once your place has been booked. Unfortunately, no refund can be given if the attendee is no longer available, however another member of staff can attend.**

**We have an online payment portal - further details will be provided upon receipt of your booking**



## Accredited Talking Mats for parents and professionals £90

Dates: Wednesday 9 June 2021 and Wednesday 7 July 2021

Both sessions need to be attended

Time: 9.30am - 12.30pm

Delivery: Classroom learning

### Course outline:

This course is intended as an introduction to Talking Mats. Talking Mats is a simple, effective approach that uses picture symbols to help children and young people express their views about topics such as school, home life, hobbies and friends. It is relevant for use with children and young people with a wide range of needs and across a range of settings, for example in the nursery, school, college and home.

### Course aims:

- To introduce participants to the background and principles of Talking Mats
- To think creatively about how to use Talking Mats in your own setting
- To complete a video of a talking mat in practice

### Recommended for:

- Parents/Carers, teachers, support staff, SENCOs and any other professionals who would like a framework for consulting children and young people

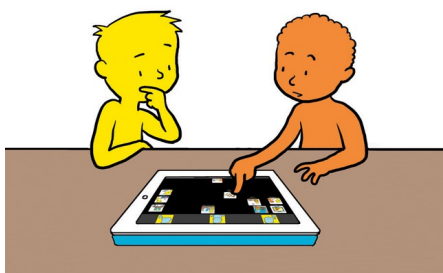
### Course materials:

- Handouts/booklet
- Talking Mats symbol pack
- Certificate

### Learning objectives:

At the end of the course participants should be able to:

- Identify and explore relevant topics for a Talking Mat
- Understand and use the Talking Mats framework



## **An introduction to stammering £40**

Date: **Tuesday 13 July or Monday 6 December 2021**

Time: **3-4.30pm**

Delivery: **Live Webinar**

### Course outline:

This workshop is suitable for anyone working with children and young people or parents/carers who have children or teenagers who stammer.

### Learning objectives:

At the end of the course participants should be able to:

- Demonstrate an understanding of the nature and causes of stammering
- Describe the types of therapies available
- Explain how those around a child or young person can best support that person towards gaining confidence in their communication

## **An introduction to working with children with Autism Spectrum Disorder £80**

### **Two half day webinars**

Dates: **Tuesday 22 February 2022**

**Wednesday 23 February 2022**

Time: **9:30-11:30am**

**(A) Over 5 workshop 9:30 - 11:30am**

**(B) Under 5 workshop 1:30- 3:30pm**

### Course aims:

- To gain an understanding of Autism Spectrum Disorder (ASD)
- To understand the range of communication, interaction and behaviour difficulties associated with ASD
- To explore a range of strategies to support children with ASD under or over 5 years

### Learning objectives:

At the end of the course participants should be able to:

- Understand recent definitions of ASD
- Understand the range of communication, interaction and behavioural difficulties associated with ASD
- Identify the sensory impairments that can be associated with ASD
- Identify strategies for supporting children with ASD such as environmental modifications, teaching and interaction strategies

## Autism Spectrum Disorder in girls £30

Delivery: e-Learning

### Learning Objectives:

- ◆ To develop greater awareness about how Autism Spectrum Disorder (ASD) presents in girls
- ◆ To increase understanding of how this may appear at school and at home
- ◆ To increase knowledge of support and resources for girls with ASD

Recommended for: Class teachers, SENCOs, Support Staff

## ELKLAN speech and language support for under 5s (accredited course)

Costs: £325 +VAT e-Learning plus 10 virtual group tutorials or £400 as above plus individual follow-up session in setting

Dates: TBC

Delivery: e-Learning with weekly tutorials

### Course aims:

- To equip staff to be more effective in supporting children with speech, language and communication needs (SLCN)
- To enable participants to identify the needs of the child and give practical strategies to support the child more effectively

### Recommended for:

- Early Years Practitioners

### Course materials:

- Accredited certificate and course manual

### Learning objectives:

- Identify and effectively meet the needs of children with (SLCN)
- Make more accurate observations to share with parents and other agencies
- Promote collaborative working amongst practitioners
- Make appropriate referrals to Speech and Language Therapy

**Please note:** Participants are expected to complete a portfolio independently outside of the sessions to attain accreditation.



## Getting the pupil's view £30

Delivery: e-Learning

### Learning objectives

- ◆ Identify the reasons that are important in getting the pupil's views
- ◆ Describe the process and approaches for collecting a pupil's views
- ◆ Plan how to implement an appropriate approach for collecting a pupil's views
- ◆ Feel more confident in using a range of approaches to collect a pupil's views

Recommended for: Class teachers, SENCOs, Support Staff

## Identifying and supporting speech, language and communication needs (SLCN) in Early Years Foundation Stage (under 5 years) £120

Free for Children Centres and LEAP settings who are participating in the LEAP Evelina Award program.

A three part course

Time: 9.30am - 3.30pm Tutorial: 9.30am - 12pm

Delivery: Live Webinar

### Course aims:

- To develop an understanding of speech and language development in children of 0-5 years
- To support identification of children with possible difficulties in understanding and using language
- To develop an understanding of the wider impact of speech and language difficulties
- To explore strategies and activities that can be used in pre-school settings to influence language development
- To develop an understanding of English as an additional language and communication development

### Learning objectives:

By the end of the course you will be able to:

- Identify what is involved in communication
- Understand the typical patterns of speech and language development
- Identify a child's level of speech and language development

### **Feedback from previous attendees:**

**“All strategies are very useful...I will use them in my setting.”**

# Identifying and supporting speech, language and communication needs (SLCN) in schools

\*\*\*NEW\*\*\*

Delivery: e-Learning

## Course outline:

This course will give an overview of SLCN in schools and how to support them. There will be opportunities to focus on strategies for specific key stages (please specify on application – Primary or Secondary).

## Course aims:

- To develop an understanding of how speech, language and communication skills develop in pupils across their academic life.
- To support identification of students with possible SLCN.
- To increase understanding of how language and communication difficulties can impact on pupils' access to the National Curriculum.
- To explore strategies that can be used to influence language development and access to the curriculum.
- Provide practical activities to support pupils with language and communication difficulties.

## Recommended for:

- Class teachers, SENCOs, Support Staff

## Course materials:

- Handouts
- Certificate

## Learning objectives:

At the end of the course participants should be able to:

- Understand typical developmental milestones for speech, language and communication in key stages 1-4.
- Identify pupils who have potential SLCN & are struggling to access the curriculum.
- Apply strategies to support pupils with SLCN in the school.

## Introduction to Zones of regulation® £30

Delivery: e-Learning

### Learning objectives

- ◆ Show awareness of the Zones of Regulation approach and how it can help children and young people
- ◆ Feel confident to start using the Zones of Regulation in your educational setting
- ◆ Learn about where you can seek further information and resources related to this approach

Recommended for: Class teachers, SENCOs, Support Staff

*“interactively great! Good to have the zones fully explained”*

## Language development in bilingual children £30

Delivery: e-Learning

### Learning objectives:

- ◆ To explore some key messages about bilingualism
- ◆ To increase confidence around having conversations with parents and colleagues
- ◆ To signpost families to where to find more information about bilingualism

*“My confidence has been increased around having conversations with parents”*

## Lego therapy - an introduction £40

Dates: Tuesday 11 January 2022

Time: 3.30-5pm

Delivery: Classroom learning

**An introduction to Lego therapy** is a simple, effective approach that uses Lego to help children and young people develop their attention & listening, turn taking, communication and interaction skills. It is relevant for use with children with a wide range of needs and across a range of settings.

### Course Aims/Outline

- To introduce participants to the background and principles of Lego Therapy
- To identify the skills needed to carry out Lego Therapy
- To think creatively about how to use Lego Therapy in your own setting

### Recommended for

- Parents and Carers
- Class teachers, SENCOs, Support Staff
- Other professionals working with children and young people with Social Communication and language difficulties.

### Entry Requirements

- None

### Course Materials

- Hand-outs
- Certificate

### Course Objectives

At the end of the course participants should be able to:

- Facilitate a Lego Therapy session
- Evaluate a Lego Therapy session

**Feedback from previous attendees:**  
***“Really practical and hands on”***  
***“Very informative and clear”***

## Makaton taster sessions - FREE

A 1½ hour session on the following dates:



Friday 7 May 10-11.30am

Wednesday 2 June 1-2.30pm

Monday 5 July 3-4.30pm

Wednesday 15 September 1-2.30pm

Wednesday 10 November 10-11.30am

Wednesday 19 January 2022 3-4.30pm

Delivery: Live Webinars

Please email [gst-tr.contacts@nhs.net](mailto:gst-tr.contacts@nhs.net) to reserve a place

These are fun and interactive small group virtual sessions for all interested in learning about Makaton.

### Session aims:

- To give participants an insight into Makaton: what it is and how it can support communication
- To learn approximately 30 signs and symbols
- To begin to discuss ideas on how Makaton can be used at home, school, nursery or other settings

### Recommended for / entry requirements:

- Anyone who is interested in finding out about Makaton
- Anyone who is interested in attending further training such as a Level 1 or 2 workshop in the future

### Course materials:

- Handouts covering the vocabulary learnt during the session
- General information regarding further Makaton training and Makaton resources

### **Feedback from previous attendees:**

***“Extremely useful and helpful - tutor made it fun and interactive”***  
***“Liked the structure it was good being able to review learning”***

## Makaton Workshops

Makaton is a signing system used to support the development of language in those with communication difficulties.

### Makaton level 1 workshop for professionals, parents & carers

#### Professionals: £67

(Cost is inclusive of course materials)

#### Parents & Carers: £16.50

(Cost is inclusive of course materials)

Delivery: **Live Webinar**

Dates: **29-30 April 2021** Time: **9am-1pm**



#### Course aims:

- To provide information on the use and purpose of Makaton, and to give an overview of this system of communication
- To introduce participants to the signs and symbols from stages 1-2 of the Makaton core vocabulary
- To explore ways of using Makaton signs and symbols in a range of settings

#### Recommended for:

- Professionals who need to use Makaton in their work
- Parents/Carers of children with speech, language or communication difficulties who live in Lambeth or Southwark

#### Course materials:

- Workshop manuals
- Pocket book of signs 1
- Pocket book of symbols 1
- Certificate

#### Learning objectives:

At the end of the course participants should be able to:

- Use stages 1-2 of the Makaton core vocabulary (signs and symbols) in their workplace.

***Feedback from previous attendees:***  
***“Tutors made learning fun and easy to understand”***  
***“One of the best courses I’ve attended I recommend it to others”***

## Makaton Workshops

Makaton is a signing system used to support the development of language in those with communication difficulties.

### Makaton levels 1 and/or 2 workshop for professionals, parents & carers

**Professionals: £67 level 1 / £67 level 2**  
(Cost is inclusive of course materials)

**Parents & Carers: £16.50 level 1 / £18 level 2**  
(Cost is inclusive of course materials)

Dates: **4 & 5 October 2021**  
Time: **9.30am - 3.30pm**  
Delivery: **Classroom learning**



#### Course aims:

##### **Level 1 (4<sup>th</sup> October):**

- To provide information on the use and purpose of Makaton, and to give an overview of this system of communication
- To introduce participants to the Signs and symbols from stages 1-2 and some additional Makaton core vocabulary
- To explore ways of using Makaton signs and symbols

#### Recommended for:

- Professionals who need to use Makaton in their work
- Parents/Carers of children with speech, language or communication difficulties who live in Lambeth or Southwark

#### Course objectives:

- Learn stages 1-2 of the Makaton core vocabulary (signs and symbols)

##### **Level 2 (5<sup>th</sup> October):**

- Signs and symbols from stages 3-4 and some additional Makaton core vocabulary
- Ways of using Makaton signs and symbols

#### Recommended for:

- Professionals who need to use Makaton in their work
- Parents and carers of children with speech, language or communication difficulties who live in Lambeth or Southwark

#### Course objectives:

- Learn stages 3-4 of the Makaton core vocabulary (signs and symbols)

## Managing infant feeding in the community (accredited)

### A practical course for Speech and Language Therapists £500

A 2 day course and a 1 day Tutorial

Days: **Tuesday 29 and Wednesday 30 June 2021** Time: 9am-5pm

Tutorial: **Wednesday 9 February 2022** Time: 9am-5pm or

Delivery: **Classroom learning**

#### Course outline:

The course is based on case discussions around allocated cases and will include a series of short lectures, group discussions and participant presentations.

Participants will be requested to bring cases including a video case study from their own practice for discussion at the tutorial.

#### Recommended for/entry requirements:

- Speech & Language Therapists with paediatric dysphagia training and experience
- Previous theoretical training in infant dysphagia would be advantageous
- Some experience of having observed/worked with infants (<12 months) with dysphagia with or without support
- Opportunity to observe/work with at least one infant between workshop and tutorial (contact us if you are unable to organise this as we may be able to support you). Video of your session/s is desirable
- Pre course reading is provided

#### Learning objectives:

By the end of the course you will be able to:

- apply theoretical knowledge about infant feeding difficulties to clinical practice
- manage infants with feeding and swallowing difficulties with supervision
- carry out a comprehensive assessment to evaluate feeding and swallowing difficulties in infants
- develop a holistic management plan for infants with feeding difficulties
- use a range of compensatory and rehabilitative intervention approaches for infants with feeding difficulties

#### **Feedback from previous attendees:**

***“By far the most useful course that I have ever attended!  
Feel much more confident”***



## Paediatric dysphagia course for Speech and Language Therapists £850

A practical approach to assessing and managing children and young people with dysphagia

4 day course and a 1 day Tutorial

Classroom dates: Monday 11 to Thursday 14 October 2021  
Tutorial Friday 22 April 2022

Live webinar dates: Monday 24 to Thursday 27 January 2022  
Tutorial Friday 8 July 2022

Time: 9am to 5pm for all sessions

### Course outline:

The course consists of lectures and practical sessions and discussion. Full participation in the 5 days is essential.

Pre-reading before the course is expected and provided.

Participants will be requested to bring cases including a video case study from their own practice for discussion at the tutorial.

### Entry requirements:

- Qualified Speech and Language Therapists with up to date registration with HCPC.
- Some experience of having observed/worked with children/young adults with dysphagia with or without support.
- Access to active caseload of children and young people with dysphagia.
- Access to identified supervisor with specialised knowledge in paediatric dysphagia

### Course objectives:

On completion of the course, participants will be able to:

- Apply theoretical knowledge about children and young people's eating and drinking difficulties to clinical practice.
- Assess, diagnose and manage their dysphagia with supervision such as second opinions and support as needed.
- Consider the ethical and legal challenges faced with managing children and young people with dysphagia.

### Assessment requirements:

- Case study documenting comprehensive assessment and intervention to be completed within three months.
- A minimum of 30 hours of direct clinical contact time to be recorded on a log and countersigned by your supervising therapist or manager.
- Declaration of competence, the supervisor will be responsible for confirming the participant's competency in working towards becoming a specialist level dysphagia practitioner as described within the RCSLT Dysphagia training and competency framework.

## PECS Awareness for parents & professionals £40

1½ hour classroom session

Date: Wednesday 3 November 2021

Time: 10-11.30am

### Course outline:

This is an awareness building session for the Picture Exchange Communication System (PECS).

These professionals are fully trained in the implementation of PECS by Pyramid Education Consultants. Information on the full PECS training provided by Pyramid Education Consultants will be provided on the day.

### Learning objectives

- ◆ Show awareness of the 6 Phases of PECS
- ◆ Enable you to help children in the use of this system with support from your Speech & Language Therapist or other professionals
- ◆ Know where you can seek further information and training related to PECS

Recommended for: Parents, Class teachers, Support Staff



## School starters - for parents & carers

Delivery: e-Learning

### Learning objectives:

- ◆ Gain advice on how to support your child's transition into primary school
- ◆ Find out about strategies around areas such as play, language and social communication
- ◆ Learn who to ask for further support

## See behaviour, think communication £90

A two part webinar:

Dates: 11 and 18 May 2021 and  
10 and 17 May 2022

Time: session 1: 9.30-12 pm and session 2: 1-3.30pm

Delivery: Live webinar

Please note this course will not cover autism specific theory and strategies

### Course aims:

- To develop an understanding of how communication difficulties may impact on a child or young person with behaviour that challenges/social emotional and mental health needs (e.g. disruption, school refusal, aggression, defiance, anxiety)
- To develop an understanding of the links between language and emotional regulation
- To look at challenging behaviour more holistically and consider/identify communication needs as part of a profile
- To identify strategies and approaches to support communication and relationship building

### Recommended for:

- Staff working with children who are at a conversational level and who present with behaviour that challenges

### Entry requirements:

- Attendance at any of the 'Identifying and Supporting Speech, Language and Communication Needs (SLCN)' courses

### Course materials:

- Handouts
- Certificate

### Learning objectives:

- Understand the relationship between communication difficulties and behaviour
- Identify a range of practical communication strategies
- Problem-solve and apply communication and behavioural strategies to your work setting

### **Feedback from previous attendees:**

***"I will definitely be using strategies and passing them on to colleagues"***

## Selective Mutism £30

Delivery: e-Learning

### Learning objectives:


- To gain a more in-depth understanding of Selective Mutism
- To enable participants to identify children with Selective Mutism in nursery and school settings.
- To provide participants with practical strategies to support the child with Selective Mutism more effectively within their setting.

### Recommended for:

- Class teachers, SENCOs, Support Staff

### Course materials:

- Handouts
- Certificate



***“It was very informative and gave me a lot of insight into Selective Mutism”***

## Supporting children with behavioural feeding difficulties £30

Delivery: e-Learning

### Course aims:

- To develop an understanding of the causes of behavioural feeding difficulties and their contributing factors.
- To equip staff and parents with knowledge and skills to support children and young people more effectively with behavioural feeding difficulties/extreme fussy eating.

### Learning objectives:

- Describe the causes and maintaining factors of a behavioural feeding difficulty
- Identify a range of practical strategies to support a child/young person with a behavioural feeding difficulty in different mealtime contexts
- Show understanding of the importance of mealtime structure/routine

### Recommended for:

- Class teachers, SENCOs, Support Staff, parents/carers

### Course materials:

- Handouts
- Certificate

## Supporting children with speech sound difficulties in the classroom £40

Date: Tuesday 26 October 2021 Time: 9.30-12.00pm

Delivery: Live Webinar

### Course Outline:

- To enable participants to have an understanding of typical speech sound development in children so they can more easily identify children who are presenting with speech sound difficulties.
- Explore strategies and activities that can be used in the school settings to support and influence speech sound development.

### Recommended for:

- Class Teachers, SENCOs, Support Staff.

### Course Materials:

- Hand-outs
- Certificates

### Course Objectives

At the end of the course participants should be able to:

- Identify typical speech sound development in children
- Recognise difficulties that could indicate possible speech sound difficulties
- Practise strategies for supporting children with speech sound difficulties in the classroom

## Supporting vocabulary development £30

Delivery: e-Learning

Learning objectives:

- ◆ Understand the importance of vocabulary development for children
- ◆ Understand some of the main principles of word learning
- ◆ Be familiar with the STAR approach
- ◆ Be familiar with a range of resources to support word learning.

***“loads of helpful ideas for how to better teach vocabulary in the classroom”***

## Thinking about a career in SLT £45

50% discount for students / some free places available for local residents

Date: Wednesday 27 October 2021 Time: 9.30am - 12.30pm

Delivery: Live Webinar

Course aims:

- To gain an understanding of Speech and Language Therapy as a profession and a possible career
- To provide an opportunity to meet a range of Speech and Language Therapists working with different specialist client groups
- To listen to a newly qualified SLT reflect on their first role and answer questions about their experience entering the profession

Recommended for:

- Anybody who is considering a career as a Speech and Language Therapist

Learning objectives:

- Describe the roles and responsibilities of a Speech and Language Therapist
- Identify different specialisms within Speech and Language Therapy

***“It was most useful...hearing all the different aspects of SLT and hearing everyone’s journey to SLT which I found reassuring and motivating”***  
***“Hearing from a range of SLTs and meeting other people interested in pursuing a career in SLT”***

## Transition to secondary school/further education

Delivery: e-Learning

### Learning Objectives:

- ◆ Be provided with support around your transition from primary to secondary school or to further education settings
- ◆ Gain ideas and advice around areas including: organisation, friendships, vocabulary learning, study skills

### Recommended for:

- Parents and/or pupils

### Course materials:

- ◆ Handouts
- ◆ Certificate

## Using visuals to support communication £30

Delivery: e-Learning

### Course aims:

- ◆ To develop basic knowledge of a range of visual support systems including Makaton signing, PECS, Schedules and Communication Books
- ◆ To explore the use of visuals in routines and class environments
- ◆ To learn about adapting your communication style to support children's learning and communication
- ◆ To consider how to implement in own setting

### Course materials:

- ◆ Handouts
- ◆ Certificate - issued following attendance at tutorial.

Recommended for: Class teachers, SENCOs, Support Staff

# What do SLTs do in schools?

Primary or Secondary

Delivery: e-Learning

## Learning Objectives:

- ◆ Find out about how Evelina SLTs work in schools
- ◆ Gain an understanding around different types of support for speech, language and communication needs
- ◆ Know where to go for further advice

## Recommended for:

- ◆ Parent/carers