



Springfield Newsletter

April

Welcome back after a well-deserved and restful break. It has been lovely to see all the children.

Diary Dates

21st April - Nursery and Reception start music sessions with Mrs Gooch

5th/6th May - Year 4 Rand Farm residential

5th/6th May - Year 5 Bike ability group 1

6th/7th May - Year 4 Rand Farm residential

7th/8th May - Year 5 Bike ability group 2

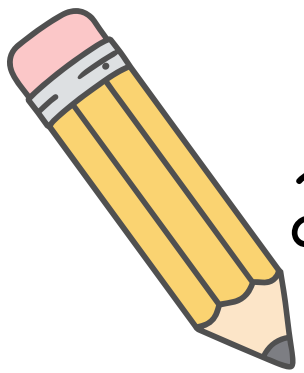
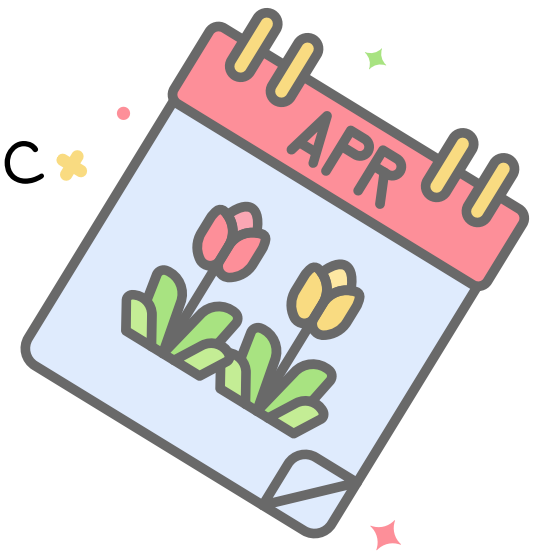
11th - 15th May - Year 6 SATS week

15th May - SEND coffee morning 9am

15th May - Year 1 phonics meeting 2.45pm

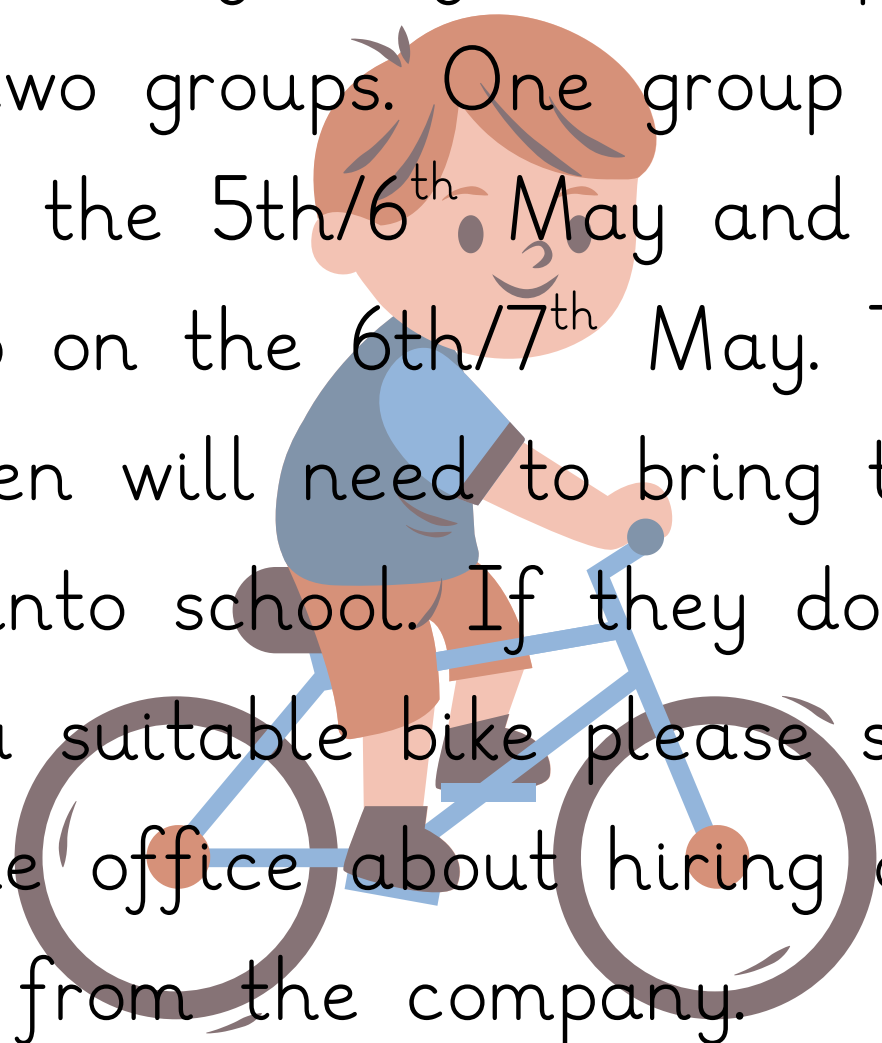
18th May - Reception children vision checks

22nd May - Year 6 treat day to Cleethorpes



Bike ability

Year 5 will be participating in bike ability, they will be split into two groups. One group will be on the 5th/6th May and one group on the 6th/7th May. The children will need to bring their bikes into school. If they do not have a suitable bike please speak to the office about hiring one from the company.



Year 1 Phonics Meeting

Mrs Robinson will be hosting a year 1 phonics meeting on the 15th May at 2.45 pm. The year 1 phonics screening check is a statutory 5-10 minute assessment taken in England every June to test a child's decoding ability. All parents/carers are invited to discuss the screening test and ask any questions.

