

NEURODIVERSITY NEWSLETTER

Newsletter - June 2025

Welcome!

Welcome to our latest newsletter! We're thrilled to share updates on our neurodevelopmental service transformation, new programmes, and community initiatives.

We extend our heartfelt thanks to our colleagues at NELPCF and our colleagues across the borough for their unwavering support and involvement, which has made a significant difference in advancing our programmes. Stay tuned for more updates and insights in each edition!

We hope this newsletter makes for an interesting read and the new design and layout is a bit more appealing!

Our Year in Numbers: Celebrating Key Achievements

Our NEL Neurodiversity programme has made significant strides in supporting children, parents, carers, and professionals over the last year. As we reflect on our achievements, we are excited to share some of the key successes with you.

These milestones reflect our commitment to improving support and resources for neurodivergent children and their families. We are proud of the progress we've made and look forward to continuing this important work.

"Coming together is a beginning; keeping together is progress; working together is success." – Henry Ford

Thank you for being a part of our journey!

 Participants in PINs programme	340
 PINs CYP my feelings survey	534
 Engagement in understanding myself training	60%
 Professionals accessing PINs training	392
 Space Forum sessions	2
 PINs Collaboration sessions	28
 HSJ Award nomination	Shortlisted
 Neurodiversity newsletter subscribers	1274
 Under 5s assessment completion	15 weeks
 NDS assessment acceptance rate	65-75%

Please note copy submission deadline dates for 2025/26 newsletters are as follows:

May/June, Nov/Dec



Settings, Parents and Carers for Education
North East Lincolnshire



North East Lincolnshire
Health and Care
Partnership

PINS NHSE Update

The Department for Education (DfE), supported by the Department for Health and Social Care (DHSC) and NHS England (NHSE), has announced the extension of the PINS project to March 2026! NE Lincolnshire will collaborate with Humber and North Yorkshire ICB to further embed the programme during 25/26.

Participating Schools:

- **24/25:** Coomb Briggs Primary Academy, Edward Heneage Primary Academy, Lisle Marsden Church of England Primary Academy & St. Joseph's Catholic Primary Voluntary Academy
- **25/26:** Healing Primary Academy, Scartho Infants School and Nursery, St. Mary's Catholic Primary Voluntary Academy & Thrunscoe Primary and Nursery Academy
- **Re-engage our AIS 23/24 co-hort:** Bursar, Queen Mary Avenue, Signhills Juniors, Ormiston South Parade(?), Littlecoates, Weelsby, Wybers Wood & Woodlands and Grange,

Key Elements:

- **Specialist Support:** 37.5 hours (5 days) of tailored support per school based on identified needs.
- **Self-Assessment Tool:** Schools identify priority areas with feedback from parents, carers, and children.
- **Children's Views:** Pupils' feedback informs support priorities.
- **Delivering Support:** Interventions by specialists, including occupational therapists, speech and language therapists, and educational psychologists.

What did we do in 24/25...

Achievements:

- **100% Engagement:** From the four selected schools.
- **Training and Support:** Delivered to 392 professionals.
- **Strong Parent Carer Engagement:** 340 attendees.
- **Improved Staff Confidence:** In supporting neurodiverse pupils.
- **Enhanced Communication & Inclusion:** 3 newsletters reaching 1274 subscribers.
- **Positive Feedback:** Families and staff felt heard, supported, and empowered.
- **Empowered Parent Carers:** Increased confidence in understanding SEND.
- **CYP Voice:** 534 children and young people contributed their feelings about school.
- **Strengthened Partnerships:** 20 stakeholders involved.

Next steps for 25/26

For 2025-26, PINS builds on past successes, reaching more children and schools through an inclusive, multi-disciplinary approach.

- **Refining the Model:** Evaluate approaches across Integrated Care Boards (ICBs).
- **Expanding Reach:** Target an additional 2-4 schools.
- **Continued Training:** Provide additional training for new/existing settings.
- **Enhanced Learning Environments:** Conduct sensory/physical space audits.
- **Improved Parent-School Relationships:** Strengthen relationships between schools and parent carers using co-production principles for new/existing settings.
- **Community Engagement:** Promote inclusive practices through the SPACE forum with support from NELPCF.

Navigo: Neurodevelopmental Service

Stay Informed: Keep checking the Neurodevelopmental Service section on the Navigo website for the latest updates and information.

We Value Your Feedback: Thank you for your feedback on the NEW Neurodevelopmental Referral Form. We are currently analysing the responses received and will provide recommendations based on your input shortly.

Exciting News: Our team attended the HSJ Awards with the NEL Parent Carer Forum. Whilst we didn't win, our achievements in reducing waiting times, providing innovative support, and fostering community collaboration were commendable (see page 6 for further details)

Referral Form: Looking to make a referral to our service? Be sure to use the latest referral form available on the NAVIGO Neurodevelopmental Service website. This ensures you stay updated with the latest information and receive the support you need while you wait. Your journey with us starts with the right form! ✨ Visit [NAVIGO Neurodevelopmental Service here](#).

Some Answers to Commonly Asked Questions About Waiting Times

Transition to New Referral Forms: During our switch to new referral forms in January 2024, we were simultaneously screening referrals using the new forms and processing those from the old Access Pathway. This meant we were running two processes at the same time.

We want to reassure you of the following:

- **No Loss of Place:** Anyone at the Access Pathway did not lose their place; they were put on the waiting list in order of their original referral date.
- **Backlog Clearance:** We are working through the backlog of old referrals, and waiting times will begin to decrease once this is cleared.
- **Your Child is Not Missed:** Rest assured, your child is still on our waiting list, and we will see them as soon as we can.

Current Waiting Times: We've seen a 79% increase in referral acceptance rates during 2024/25, meaning the number of children requiring an assessment has risen. Please be assured we are working hard to reduce waiting times. Thank you for your patience and understanding as we navigate these challenges together. Please remember to keep checking our [webpage](#) for further updates and support whilst you are waiting.

Handy Hints & Tips

1. **Advice Line:** Need advice before making a referral? Call our Advice Line at 01472 252570 (option 2).
2. **Appointment Attendance:** If you can't attend an appointment, please notify us as soon as possible.
3. **External Assessments:** Let us know if you access assessments outside local pathways. This helps us update our waiting list and reduce wait times for other children and families.

Thank you for your patience and support!

Navigo: Neurodevelopmental Service

Collaboration with stakeholders: The members of the Neurodevelopmental Service continue to collaborate with a range of stakeholders within the local community. The team regularly meet with members of [NELPCF](#) to share information and gain feedback from NEL's parent carers.

Our team is collaborating closely with Compass GO (North East Lincolnshire Mental Health Support Teams) to enhance mental health support for SEND children, delivering joint training to 30 educational staff at the schools conference and a separate neurodiversity training session to approximately 60 attendees.

The Neurodevelopmental Service have also been involved in the [Partnerships for Inclusion of Neurodiversity in Schools \(PINS\) - NELC SEND Local Offer](#). They have delivered training to a range of ALL staff in the primary schools that are involved in the project. The Neurodevelopmental team have supported the project team in educating and sharing knowledge about neurodiversity with all stakeholders involved in school. For more details and information, please see the section below on the PINS Project.

At least one member of the Neurodevelopmental Service now attends the [Settings, parents and carers for education- SPACE Forum - NELC SEND Local Offer](#) which is held at Grimsby Town Hall on a Tuesday morning, 9.30am - 11.30am. This is a fabulous opportunity for members of the team to engage and network with parent carers, educational setting staff and members of local services and support. The team are available to answer questions and offer information and advice to parent carers and setting staff.

Support whilst you wait

Introducing WINGS: Support for Parents of Neurodivergent Children

Navigo's Neurodevelopmental Team is working hard to reduce waiting times for assessments. While you wait, Navigo's Child and Adolescent Mental Health Service (Young Minds Matter) has launched WINGS (Workshop for Integrated Neurodiversity Group Support). This initiative equips parents with the skills and knowledge to support their children at home and school.

WINGS Highlights:

- Six Sessions: Each two-hour session covers essential topics like understanding your child's needs, emotional regulation, and managing behavior.
- Expert Guidance: Learn from professionals and build a support network with other parents.
- Flexible Attendance: The team is improving accessibility based on parent feedback.

Session Overview:

1. Understanding and Supporting Your Child's Needs
2. Emotional Regulation
3. Managing and Supporting Behavior
4. Support for You and the Family
5. Sleep
6. The Assessment Process

Join Us! The first sessions started in April 2024 and will continue throughout the year. Families on the waiting list will be invited based on their referral date. Empower yourself with WINGS and support your child's unique journey! In the meantime, if you would like more information click on the link: [Neurodevelopmental Service: Workshop for Integrated Neurodiversity Group Support \(WINGS\) :: Navigo \(navigocare.co.uk\)](#)

Neurodevelopmental Service: what you've said...

Feedback on the Neurodevelopmental Service from parent carers:

"Good to know all the different services out there locally" - Parent Carer

"Exceptional! The staff have been amazing from reception to the lovely X who has been supportive throughout" - Parent Carer

"This service was very inclusive and it almost felt like we had known X all our lives." - Parent carer

"I felt like what I was saying was being listened to 😊" - Parent Carer

"Helpful resources and links" - Parent Carer

"X made the journey a lot easier and explained things well" - Parent Carer

Parent Carer Feedback on WINGS: Workshop for Integrated Neurodiversity Group Support

"Short YouTube videos were enough to understand the differences in neurodiversity (simple and informative)."

"The introduction to house rules will definitely be something we will be trying."

"Good discussions about emotions and good understanding of this week's course. Very well led. 😊"

"The introduction to house rules will definitely be something we will be trying."

HSJ Partnership and Independent Healthcare Providers Awards - Shortlisted Finalist 2025

Exciting News! Our Neurodevelopmental Service, alongside the NEL Parent Carer Forum, attended the HSJ Awards on 20th March for the Primary & Community Care Project of the Year

Whilst we didn't win, our journey and efforts were truly commendable.

Our Achievements:

- **Pathway Transformation:** Significantly reduced waiting times, ensuring quicker access to care for children and young people.
- **Innovative Support:** The Navigator role provided essential support to families, making a real difference.
- **Collaborative Efforts:** The co-produced referral form and our multi-disciplinary team approach set new standards in neurodevelopmental care.
- **Dedication:** The commitment and hard work of our team and key partners have laid a strong foundation for future success.
- **Community:** Built a supportive and collaborative community striving for excellence.

Let's celebrate our achievements and continue to push forward with the same passion and dedication.

To Our Stakeholders and Professionals: Your expertise and commitment have been the backbone of this project. From reducing waiting times to providing essential support through the Navigator role, your efforts have significantly impacted the lives of many children and young people. Thank you for your tireless work and for setting new standards in neurodevelopmental care.

To Our Parent Carers: Your involvement and collaboration have been invaluable. Your insights and feedback have shaped a more effective and compassionate service. Thank you for your patience, understanding, and for being strong advocates for your children.

Together, we have made remarkable progress and built a supportive community that continues to strive for change. While we may not have won the award, we have certainly made a difference, and that is something to be incredibly proud of.

Thank you once again for your incredible efforts and commitment. Let's continue to work together to make a positive impact.



Understanding Myself

The Understanding Myself training programme by Daisy Chain, part of the Autism in Schools Project, focuses on increasing self-awareness and self-esteem among neurodiverse young people. It was developed through a **co-production process with neurodiverse young people**, ensuring their voices and experiences were central to the program.

The training is underpinned by various psychological theories and practices, aiming to increase self-awareness, improve self-esteem, and help others understand the unique experiences of neurodiverse individuals.

The program includes sessions on topics such as sensory challenges, anger and anxiety, and communication, tailored to help young people understand and communicate their needs effectively.

We commissioned Daisy Chain to run a comprehensive Train the Trainer program in 2023 in North East Lincolnshire (NEL) which trained 6 local Trainers. Through this initiative, we successfully trained 104 professionals to deliver the program, with the aim of targeting all educational settings to give them access to the training scheme and resources. 60% of settings have taken up the offer of this programme to date.

Feedback from children and young people (CYP) and professionals on the Daisy Chain program has been overwhelmingly positive. CYP have reported increased self-awareness, improved self-esteem, and a better understanding of their unique experiences.

Professionals appreciate the program's comprehensive approach, which includes sessions on sensory challenges, anger and anxiety, and communication. They find the training valuable in enhancing their ability to support neurodiverse individuals effectively.

To find out more about the programme please email Nicola.Chappel@nhs.net

The details of the next training session are:

DAISY CHAIN
Autism & Neurodiversity

Understanding Myself Training

Humber and North Yorkshire Health and Care Partnership

'TRAIN THE TRAINER' TRAINING
Free training is being offered to all primary and secondary educational settings and other relevant practitioners and care settings. Participants will be provided with all resources to support the delivery of the programme.

SEND
North East Lincolnshire

THERE ARE FOUR SESSIONS AVAILABLE:
We are offering two dates that you can access the training session; we will walk you through the programme (you only need to attend one of the sessions) and you will be provided with a FREE copy of the programme and all its resources after completing the training session.

THE DATES AND VENUE:
Wednesday 2nd July 1pm - 3.30pm
At Grimsby Town Hall
or
Wednesday 17th September 1pm - 3.30pm
At Grimsby Town Hall

TO BOOK YOUR PLACE:
If you would like to join us please let us know by emailing us at hnyicb-nel.fmhhd@nhs.net and include:

- Your name
- Your role
- The setting you work in
- Which session you would like to attend

NORTH EAST LINCOLNSHIRE COUNCIL
www.nelincs.gov.uk

SPACE Forum

SPACE Forum - 29th April 2025 update

The **SPACE Forum** is a collaborative platform supporting parent carers, educational staff, and local services in North East Lincolnshire. Forums are held on a Tuesday morning, term-time only, in Grimsby Town Hall, 9.30am to 11.30am.

The April forum was attended by 20 stakeholders and the focuses of this forum was:

- **A vacancy on the NEL Adult Autism Board**
- **Draft North East Lincolnshire All Age Autism Strategy - your voice**
- **Horizon's Youth Zone**

The session was attended by Angie Kershaw, Delivery Manager Disabilities and Autism and Hayley, Izzy and Zoe from Horizon.

Angie Kershaw spoke to the forum members about a **vacancy on the NEL Adult Autism Board**, and shared the **Draft North East Lincolnshire All Age Autism Strategy**. For more information on both these topics please see pages 11 and 12.

Hayley, Izzy, and Zoe from Horizon presented on the Horizon Youth Zone, currently under construction in Grimsby. Opening in late 2025, this multimillion-pound facility will offer state-of-the-art amenities and over 20 activities, staffed by skilled youth workers. It aims to provide a safe and inspiring space for young people aged 8-19, and up to 25 for those with additional needs, to find mentors and support. Membership will cost £5 per year and 50p per visit. Horizon Youth Zone will help young people raise their aspirations and overcome barriers.

Horizon will be a place where young people will find the opportunities and support they need to raise their aspirations and overcome barriers. To find out more, visit www.horizonyouthzone.org

Feedback from Forum members:

- "A lot of interesting information about the new youth club"
- "Just real excitement for what is going to be available for all our young people"
- "Grimsby has a lot of up and coming excitement happening"
- "Really informative"
- "Lots of useful information around Horizon offer and future plans. Update on all age autism strategy"

Please join us at the next **SPACE Forum** when Sarah Arthur, Makaton Tutor will be with us to provide us with An Introduction the Makaton.

Topic: An Introduction to Makaton

Date: Tuesday 10th June 2025

Time: 9.30am - 11.30am

Venue: Grimsby Town Hall



Settings, Parents and Carers for Education
North East Lincolnshire

The only forum in North East Lincolnshire providing a regular opportunity for parent carers, schools and colleges to meet and work to improve the educational experiences for our Children and Young People with SEND.

Come along and join our forum at

Grimsby Town Hall
9.30am - 11.30am

on the following dates

For more information, contact
SPACEForum@nelincs.gov.uk

Future SPACE Forum dates & topic areas for academic year 2024-2025:

- Tuesday March 25th 2025
Transitions
- Tuesday April 29th 2025
Onside Youth Zone - Horizon
- Tuesday June 10th 2025
Intro to Makaton
- Tuesday July 8th 2025
Annual round up & local updates



NELPCF



North East Lincolnshire Parent Carer Forum

Purpose:

- Collaborate with the Local Authority to improve services and support for SEND families in North East Lincolnshire.
- Ensuring parent carers' voices are heard in meetings

Who They Are:

- A passionate group of parent carers of children and young people with various needs and disabilities.

Activities:

- Coffee mornings, events, training sessions
- Paperwork Support Cafe
- Family Funday
- Sing for Fun
- Walking Group

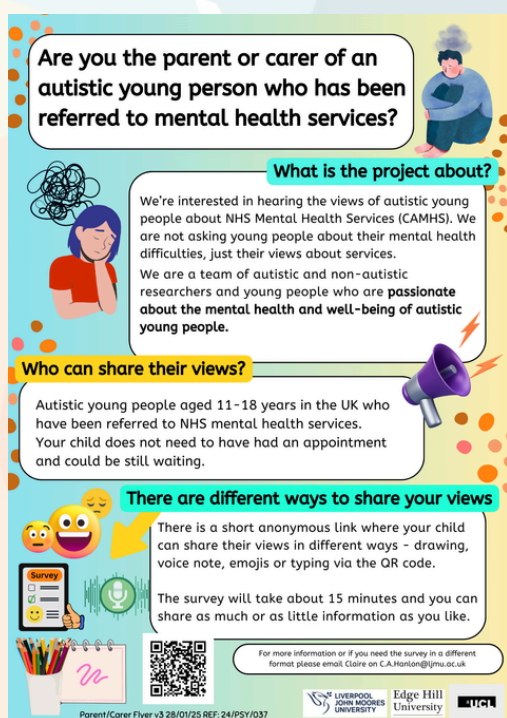
Membership:

- Open to parent carers or grandparents of children and young people aged 0-25 with SEND (diagnosed or suspected)
- More information available on their website or Facebook page, or through representatives

If you need more details about NELPCF and dates they are in schools please click [here](#)



Improving access to CAMHS for autistic CYP



Dr Claire Hanlon, Liverpool John Moores University, is looking for autistic children and young people, aged 11-18. Children and young people would be invited to participate in a survey The survey will take about 15 minutes to fill out. Children and Young people can share their views by writing, drawing, recording a voice note or uploading a picture. For more details contact Claire on C.A.Hanlon@ljam.ac.uk

Early Years Network Meeting Childminders

Join us for the Early Years Network Meeting for Childminders on 12th June from 6:30 pm to 8:00 pm

This meeting will provide any necessary updates, will include an element of training and is a chance for childminders in the area to network with other local childminders and the Early Years Team.

If you are a childminder in NEL please register to attend [here](#)

Early Years

Support for Early Years Settings (0-5 Age Range)

Request Support: We are open to requests for support from any setting with children aged 0-5.

Information, Advice and Guidance: Our team can provide Information, Advice, and Guidance (IAG) on writing assessment requests to the Neurodevelopmental Team, EHCARs, and Inclusion Funding.

Make a referral: We meet weekly to triage referrals. Please complete the referral form on this page and return it to earlyyearsnelc@nelincs.gov.uk.

Training and Support

- **All About Attention:** Delivered free in settings, this program supports the emerging communication needs of early years children who are preverbal or have limited spoken language and attention skills.
- Contact: allaboutattention@nelincs.gov.uk to register your interest.
- **SEND/EY Surgeries:** Available for those who would like to discuss any issues or concerns.
- Contact: angela.wools@nelincs.gov.uk to book a slot.
- **SMART Targets:** Assistance in developing and writing SMART outcomes for My Plans, Support Plans, and Assessment requests.
- Contact: andrea.clark@nelincs.gov.uk for further information.
- **Termly SEND Network Meetings:** For early years professionals.
- Contact: angela.wools@nelincs.gov.uk for further information.

Portage Services: Weekly Neurodiverse-friendly social communication groups are available at Queensway Family Hub, with fortnightly groups at Immingham Family Hub and Reynolds Family Hub. These sessions are for children known to the Portage service.

- Contact: aimee.lofts@nelincs.gov.uk for further information.

Understanding and Supporting Neurodiversity in the Early Years

- Dates: 12th May and 2nd July 2025
- Topics covered:
 - Understanding neurodivergence
 - Recognising emerging neurodivergent behaviours
 - Recognising and understanding neurodivergent play
 - Strategies and support for neurodivergence within the early years
- Contact: angela.wools@nelincs.gov.uk for further information.

Resources



**Autism
Education
Trust**

The Autism Education Trust (AET) and Autistic Young Experts (AYE) have co-produced a

powerful **Terminology Guide** titled '**Why Words Matter**'. This guide aims to reshape the language used about autism, emphasizing that autism is a difference, not a deficit.

Their journey in creating this guide is a story of empowerment, lived experience, and advocacy, demonstrating the significant impact of words in education and wider society. The guide is more than just a resource—it's a call for change, encouraging educators and society to adopt positive, inclusive language that fosters understanding, respect, and promotes equality and diversity.

Purpose: The guide aims to reshape the language used about autism, emphasizing that autism is a difference, not a deficit.

Creation: Co-produced by the Autistic Young Experts (AYE) panel, aged 17 to 25, through debate and discussion.

Focus: Advocates for positive, inclusive language that fosters understanding, respect, and promotes equality and diversity.

Impact: Highlights how the words chosen by education professionals influence how autistic students are treated and perceive themselves.

Call to Action: Encourages educators to adopt the suggested language to create inclusive environments where autistic young people can thrive.

[Terminology Guide: Why Words Matter | Autism Education Trust](#)

You can find additional autism and neurodiversity resources on the NELC Local Offer page [here](#).

All Age Autism Strategy

The National All Age Autism Strategy, developed by the Department for Education and other relevant government departments, aims to improve the lives of autistic people across the UK. The strategy, initiated in 2021, centres on co-production and the voices of autistic people. It incorporates feedback from the autistic community in North East Lincolnshire on various aspects of their lives, including employment, health, and interactions with the police, highlighting a general lack of understanding and empathy. Autistic individuals co-wrote the strategy and facilitated online consultation sessions with local partners. The strategy also includes insights from parent carers of autistic children and young people, gathered through various consultations and events.

You can find a copy of NEL All Age Autism Strategy by clicking on the link below and then clicking on 29th April.

[NELC SEND Local Offer | Settings, parents and carers for education- SPACE Forum - NELC SEND Local Offer](#)

We would like you to take a look at the document and if you have any comments/feedback on the document and/or the contents please email your feedback to:

hnyicb-nel.FMHD@nhs.net

NAS Newsletter



**National
Autistic
Society**

Keep up to date with all the great things that the National

Autistic Society (NAS) are doing by subscribing to their e-newsletters. You can change your mind at any time by following the unsubscribe link in the email footer.

You can sign up to receive the NAS Newsletter via the link below:

[Sign up to our newsletter](#)



North East Lincolnshire

**Health and Care
Partnership**

Join the NEL Adult Autism Board!

Are you a parent carer of an autistic young person (16+ without a learning disability)? The NEL Adult Autism Board is looking for a representative like you!

Why Join?

- Shape how NEL supports adults with autism.
- Be part of a board with at least 50% autistic adults, including members from the Adult Autism Forum, Faraway CiC, and other supportive services.

Commitment:

- Attend meetings every two months (face-to-face or via Teams).
- Meetings last 1.5 hours.

Interested or have questions? Please contact Angie Kershaw, Delivery Manager Disabilities and Autism, at angie.kershaw1@nhs.net.

Make a difference today!

Stay Healthy with Annual Health Checks!

Did you know? If you're over 14 and have a learning disability, you should receive an annual health check.

Why is it important?

- Early Detection: Annual health checks can catch potential health issues early, making treatment more effective.
- Confidence in Care: Regular health checks help you become comfortable with the process, so you feel at ease seeking help when you need it most.

Don't Miss Out! More than 400 local people missed their annual health check last year. Make sure you're not one of them! Contact your GP to ensure you're on the learning disability register and book your health check.

Take Action Today!

- Stay Informed: Watch this informative clip to learn more - click on the pic!
- Stay Healthy: Schedule your annual health check and take charge of your well-being.

Your health matters.

Let's make sure everyone gets the care they deserve!



Mental health Lunch & Learns

Professionals working with children, young people and their families are invited to attend the below free lunch and learn sessions to learn more about our local services. For more information please email hnyicb-nel.FMHD@nhs.net

LUNCH & LEARN



SESSIONS

Compass Go Service Offer - Wed 22nd Jan

What is the offer, how CYP are supported & how to refer/access the service

JEFF Team Offer - Wed 19th Feb

What is the service offer & how to access support

Compass Go Engagement & Participation - Wed 19th Mar

Wellbeing Peer Programme

Young Minds Matter - What is Mental Health - Wed 14th May

Overview of mental health, including behaviours that challenge

Young Minds Matter - Tier 4 - Wed 18th Jun

What is the process for admission to a tier 4 hospital, role of the Provider Collaborative in admissions to tier 4, What is Section 2 & Section 3, & discharge pathway/step-down

Young Minds Matter - Children Looked After Team Offer - Wed 16th Jul

What is the offer including to Residential Homes, & how can the team support.

Young Minds Matter - Trauma & the impact on CYP - Wed 17th Sep

Presentation of trauma, the impact upon behaviours & relationships, & how to support CYP

Young Minds Matter - Neurodevelopmental - Wed 15th Oct

Potential presentations of CYP, how to refer for an assessment, & how to support neurodiverse children

Kooth Service Offer - Wed 12th Nov

Demonstration of the service, how young people access the service, how Kooth can support young people with eating difficulties & how Kooth can support young people engaging in self-injury & harm

For further information please contact hnyicb-nel.fmhd@nhs.net

The Health and Care Excellence Awards 2025 are now open for applications!



Do you know a person or organisation who is going above and beyond and making a positive impact and improving the lives of the people of North East Lincolnshire?

Why Are These Awards Important? These awards shine a spotlight on the organisations and individuals who aim for excellence every day. They make people's lives better!

Do you know a person or organisation who is going above and beyond and making a positive impact and improving the lives of the people of North East Lincolnshire?

Why Are These Awards Important? These awards shine a spotlight on the organisations and individuals who aim for excellence every day. They make people's lives better!

The Award Categories are;

- Partnership Award - Sponsored by Orsted
- Culture of Kindness Award - Sponsored by Your Place, Grimsby
- Employer of the Year - Sponsored by Holidays By Design
- Best Workforce Initiative - Sponsored by Franklin College
- Innovation Award - Sponsored by Nolan Interiors
- Youth Worker of the Year – Sponsored by TEC PARTNERSHIP
- Apprentice Sponsored/ T-Level Student of the Year – Sponsored by ENL UTC
- Volunteer of the Year – Sponsored by NNELCA
- Carer of the Year – Sponsored by GRIMSBY TOWN FC
- Special Achievement Award - Sponsored by DFDS

Other sponsors include Care Plus Group, Navigo and F4IT

Finalists and winners will be celebrated at an exclusive awards ceremony on **Thursday, 2nd October at Grimsby Town Football Club**. The winners will receive an award designed and produced by a group of young people studying T-Level apprenticeships and shortlisted nominees will receive a Highly Commended Certificate, recognising their contributions.

How to Apply

Applying is easy! Nominations are open until 12 noon, 30th June 2025 and can be submitted [here](#)

Nominations can be made by employers, individuals or third parties (with nominee consent).

Any queries, please contact sharon.stead@nhs.net or katrina.goodhand@nhs.net

SEND Local Offer



The Local Offer in North East Lincolnshire the place that provides and directs you to information that will support children and young people with Special Educational Needs and Disabilities (SEND).

It helps parents, children and young people aged 0 to 25 years find information about specialist and targeted services and activities in North East Lincolnshire.

For more information click [here](#)

Resources

Explore the SEND Book Collection at Lincs Inspire Libraries!

Our SEND (Special Educational Needs and Disabilities) book collection, funded by the NHS England Pilot Autism in Schools, is here to support and inspire children of all abilities. This initiative aims to provide resources and create an inclusive learning environment for children with autism.

Dive into a World of Learning:

- Engaging Stories & Vibrant Pictures: Perfect for capturing young imaginations.
- Educational Resources: Tailored to meet diverse needs, from sensory-friendly books to accessible formats.

Highlights:

- Wide Range of Topics: Covering dyslexia, dyspraxia, ADHD, autism, and more.
- Expert Selections: Books chosen by children, parents, carers, and professionals in NE Lincs.

Why Reading is Great for SEND Families:

Reading boosts cognitive development, enhances language skills, and helps children understand their emotions. It also strengthens family bonds and improves social interactions. With books tailored to individual learning styles, reading becomes an enjoyable and accessible way to learn and grow.

Join us at Lincs Inspire Libraries and let your child's imagination soar while they learn, grow, and make new friends in a welcoming environment.

<https://lincsinspire.com/libraries-archives/book-collections/send-collection/>

How to Join Lincs Inspire Libraries

Joining Lincs Inspire Libraries is easy and opens up a world of resources! Here's how you can become a member:

1. **Visit the Website:** Go to Lincs Inspire Libraries Online Services.
2. **Register for an Account:** Follow the instructions to register for a library account.
3. **Access Resources:** Once registered, you can access a variety of online resources, including eBooks, eAudiobooks, magazines, newspapers, and more.

Enjoy the benefits of free Wi-Fi, join groups, and explore a vast collection of books and educational materials. Happy reading!

Share Your Stories with Us!

Share Your Stories with Us! We're excited to feature your articles in our newsletters throughout the year.

This is your chance to share your insights, stories, and updates with our vibrant community.

Whether it's a heartwarming tale, an inspiring achievement, or valuable information, your contributions make our newsletters special.

Submission Deadlines for 2025/26:

- November/December: Submit by October 20, 2025.
- May/June: Submit by April 10, 2026.

These dates have been carefully chosen to avoid school holidays in North East Lincolnshire, ensuring smooth and timely production.

Why Contribute?

- Connect with Others: Share your experiences and connect with like-minded individuals.
- Make an Impact: Your stories can inspire and inform our readers.
- Be Part of Something Bigger: Join a community that values your voice and contributions.

Get your articles ready and let's make our newsletters shine with your unique perspectives!




Please email newsletter articles (maximum word count 150-300 words) and attach any pictures in high quality resolution. Please ensure consent for sharing articles and pictures has been sought. To navigo.hosting-nelhcpteam@nhs.net.

Support services in NEL

In the following sections we have provided a summary of support services within NEL and what they do. Don't forget to check out the Local Offer too [NELC SEND Local Offer | North East Lincolnshire Special Educational Needs & Disability \(nelincs.gov.uk\)](https://www.nelincs.gov.uk/nelc-send-local-offer/).

Service	What they do	How to contact
Family Hubs 	<p>Family hubs bring together services to offer help and support to children and young people aged 0 to 19 and their families.</p> <p>You can speak to a range of professionals such as our advisers, health visitors, school nurses and other family support services to work through issues that may arise during a child or young person's life.</p>	<p>Family hubs NELC nelincs.gov.uk</p>
FIS - Families First Information Service 	<p>The Families First Information Service is a free, impartial information service for families with children aged 0-19 years.</p> <p>If you are looking for childcare, you can use the directory to search for childcare or contact the service directly.</p>	<p>fis@nelincs.gov.uk 01472 326292 option one Family Information Service Directory NELC nelincs.gov.uk</p>
We Are F.I.S.H. CIC 	<p>We Are F.I.S.H. are a community based, not for profit organisation focused on supporting members of the local community, particularly young people and families. Through various activities such as a community cafe, volunteer opportunities, and youth activities, they aim to improve the health and well-being of individuals by providing access to outdoor sports and our community allotments.</p>	<p>Phone: 01472 470603</p> <p>Email: catchus@wearefish.org.uk</p> <p>Website: Home</p>
Parent Carer Forum 	<p>NELPCF is a collective voice for parent carers of children and young people with SEND in North East Lincolnshire. They make sure that parents' views and experiences influence local services to make things better.</p>	<p>Email: nelpcf@gmail.com Website: NELPCF https://www.facebook.com/NELPCF</p>
SENDIASS 	<p>SENDIASS North East Lincolnshire is a free service for children and young people with special educational needs and disabilities and their parents and carers. It's impartial and we give confidential information, advice and support in relation to special educational needs and disabilities (SEND) and related health and social care matters.</p>	<p>Email: ask@nelsendiass.org.uk</p> <p>Phone: 01472 326363</p> <p>Website: www.nelsendiass.org.uk</p>

Support services in NEL

Service	What they do	How to contact
Support as a carer 	<p>The Carers' Support Service is the main port of call for Carers in Northern Lincolnshire.</p> <p>There is a range of free and confidential practical and emotional support on offer.</p>	<p>Phone: 01472 242277 Website: Carers Support Service</p>
Autism Central  Daisy Chain 	<p>The Autism Central Programme in collaboration with Daisy Chain offers families and carers of autistic people high-quality and easily accessible autism education, training, and support through peer educators, alongside a dedicated website.</p> <p>Daisy Chain's upcoming sessions:</p> <ul style="list-style-type: none"> • 12th May - 5:30pm-6:30pm - ARFID • 16th May - 10am-11am - Transitions to Adulthood • 21st May - 6pm-7:30pm - Getting Extra Help in Education Settings • 23rd May - 10am-11am - Empowering parents in recognising online safeguarding concerns • 30th May - 10am-11am - Personal Budgets & Personal Assistants 	<p>You can access the training sessions if you have a young person with traits, undergoing, or diagnosed with autism, ADHD, FASD or sensory processing differences by visiting: https://www.daisychainproject.co.uk/event/learning-workshops/</p>

If you are concerned that a child is being abused, or they may be at risk of harm, you should contact NELC **Integrated Front Door Service** to make a referral.

For concerns around mental health use the 24/7 mental health Single Point of Access on 01472 256256 (option 3) or freephone 08081 968442

If life is at imminent risk, call the emergency services on 999.

Support for Children & Young People (CYP)

Find out more about	Who/Where?	What will you find?
Generation Z 	<p>We'd love you to come along to our meetings on the last Friday of every month, 2pm-4pm.</p> <p>Contact details: Tel: 01472 242277</p>	<p>Are you aged 18 to 25? We want to hear from you! We are launching our new Peer Support Group specially for young adult carers</p>
Young Carers 	<p><u>Young Carers - Carers Support Service (carerssupportcentre.com)</u></p> <p>For more information about the services and activities available for Young Carers in North East Lincolnshire.</p> <p>Contact details: Tel: 01472 326294 (option 3 then option 2) Email: admin.yps@nelincs.gov.uk.</p>	<p>CYP of any age who have a family member with an illness, medical condition or disability. They may look after or help look after their parent, brother, sister or Grandparent or other family member. Find out more information about activities & groups for young carers, other services for support,</p>



Support for Children & Young People (CYP)

Find out more about

Compass GO



Who/Where?

Compass GO... Mental Health Support Team works with children, young people, families and educational settings in NEL.

Contact details:

Tel: 01472 494 250

Email: nelincsmhst@compass-uk.org

Email: compass.go.mhst@nhs.net

What will you find?

Support, help & advice for pupils, students & schools for issues related to emotional & mental health wellbeing. Compass work with educational settings across NEL providing advice, information & support to staff in promoting emotional & mental health wellbeing. Compass work with CYP on a 1:1 basis offering Cognitive Behavioural Therapy intervention.

Faraway



Faraway is a not-for-profit social enterprise community interest company that actively works to create inclusive communities through enabling autistic people to raise awareness of autism within their local community and support the community to deliver services that are accessible for all people.

Contact details:

Tel: 07835 034014

Email: info@thefarawaycic.org

Address: Neurospace
Queen Street
Grimsby
DN31 1QG

The company's activities will provide benefit to people with unique minds, in particular, autistic adults. They provide:

- A place to plan & realise bright futures by supporting people to develop their own activities, employment opportunities & peer support services.
- Give people a chance to reduce social isolation & improve self-confidence & social skills by providing person centred services & activities.
- Opportunities to create inclusive communities through enabling autistic people to raise awareness of autism within their local community & support the community to deliver services that are accessible for all people.
- Provide employment opportunities for autistic adults that will enable them to support their peers in accessing employment, local health & other social care services & through mentoring.

Would you like to get involved?

Please feel free to come along - We look forward to seeing you!

Event

SPACE Forum



Who is it for?

All parent carers & staff from all educational settings (Nursery to College)

When is it?

Tuesday 10th June
9.30am - 11.30am
Grimsby Town Hall

How do I get involved?

The SPACE Forum is the only forum within NEL that includes parent carers & setting staff working in partnership. See [here](#) for more information & notes of the last meeting

NELPCF Parent carer school drop-in events

Parent carers of children and young people **who attend this setting only**

Contact NELPCF, details on page 16

Come along to any of these events if your CYP attends the school/setting & meet representatives of NELPCF & other parent carers. For further information please contact the NELPCF directly (page 16).

