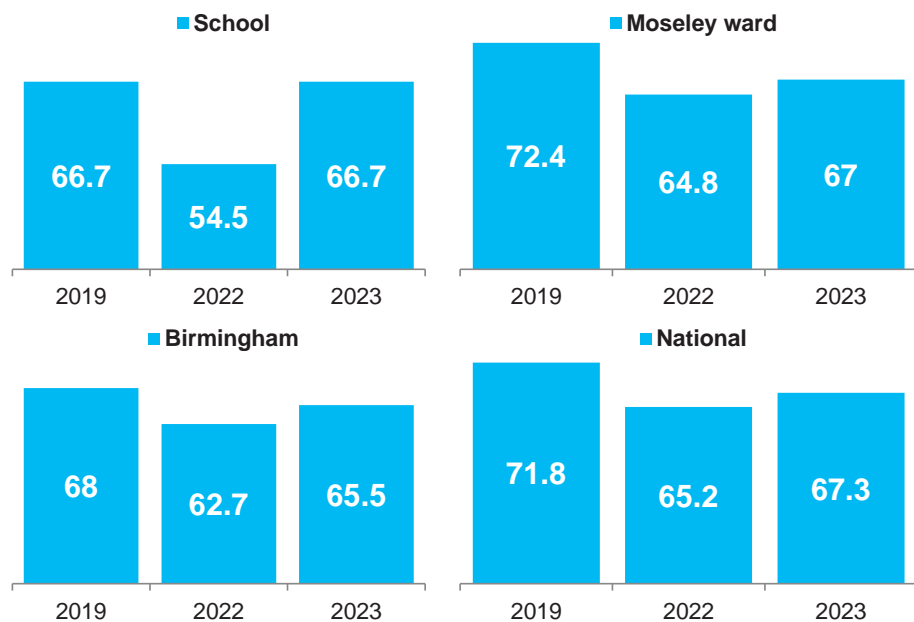


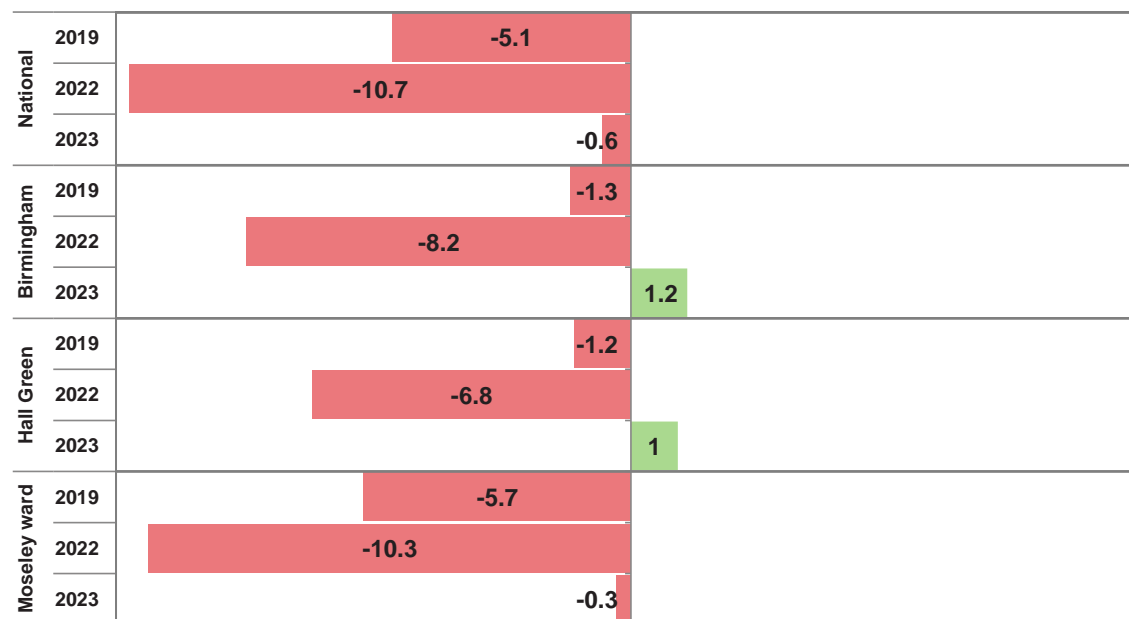
## Early Years Foundation Stage Profile

	School			Moseley ward			Hall Green			Birmingham			National		
	2019	2022	2023	2019	2022	2023	2019	2022	2023	2019	2022	2023	2019	2022	2023
Number of eligible children	30	22	30	225	193	200	1777	1635	1561	15765	15087	14846	638995	622583	612610
<b>% achieving GLD</b>	<b>66.7</b>	<b>54.5</b>	<b>66.7</b>	<b>72.4</b>	<b>64.8</b>	<b>67</b>	<b>67.9</b>	<b>61.3</b>	<b>65.7</b>	<b>68</b>	<b>62.7</b>	<b>65.5</b>	<b>71.8</b>	<b>65.2</b>	<b>67.3</b>
% at least expected level across all early learning goals	66.7	54.5	66.7	72	64.2	64.5	66	60.1	64.2	66.2	60.7	63.7	70.7	63.4	65.7
% at least expected across all prime areas of learning	70	63.6	73.3	77.3	72.5	72	72.6	68.9	72.1	74.7	71.1	72.1	79.2	74.2	75
% at least expected across all specific areas of learning	66.7	54.5	66.7	72	64.2	66.5	66.7	61.4	64.4	66.8	61.7	64.1	71.4	64.9	67
average points score	33.5	30.5	31.1	34.6	29.3	30.8	32.8	29.8	30.5	33.2	30.1	30.4	34.6	np	np
Average number of ELG achieved	14.5	13.5	14.1	14.3	13.8	13.8	13.5	13.2	13.5	13.7	13.4	13.4	np	14.1	14.1
% achieving Communication and Language	76.7	63.6	76.7	81.3	77.2	77.5	75.6	73	75.1	77.2	75.4	75.8	82.2	79.5	79.7
% achieving Physical Development	83.3	77.3	90	84.4	86	82.5	80.6	81	82.3	82.8	82.5	82.2	87.1	84.9	85.2
% achieving Personal, Social and Emotional Development	80	90.9	80	84.4	83.4	81.5	78.9	80.2	81.9	80.7	80.6	80.3	84.8	83	83.2
% achieving Literacy	66.7	54.5	66.7	72.4	66.8	70	69.1	64.3	67.1	69.4	65.1	66.9	73.4	68	69.8
% achieving Mathematics	73.3	68.2	76.7	76.4	73.6	77.5	72.7	71.3	72	73.2	70.9	72.5	78.5	75.9	77.2
% achieving Understanding the World	80	86.4	83.3	81.8	79.3	76.5	76.2	73.8	74.5	78.1	74.4	75.2	83.9	79.6	80.3
% achieving Expressive arts and design	93.3	72.7	86.7	85.8	80.8	81.5	80.2	78.5	80.5	81.9	79.2	80	87.2	84.5	85

### Three year attainment trend for GLD



### Attainment difference of school to indicated group for GLD

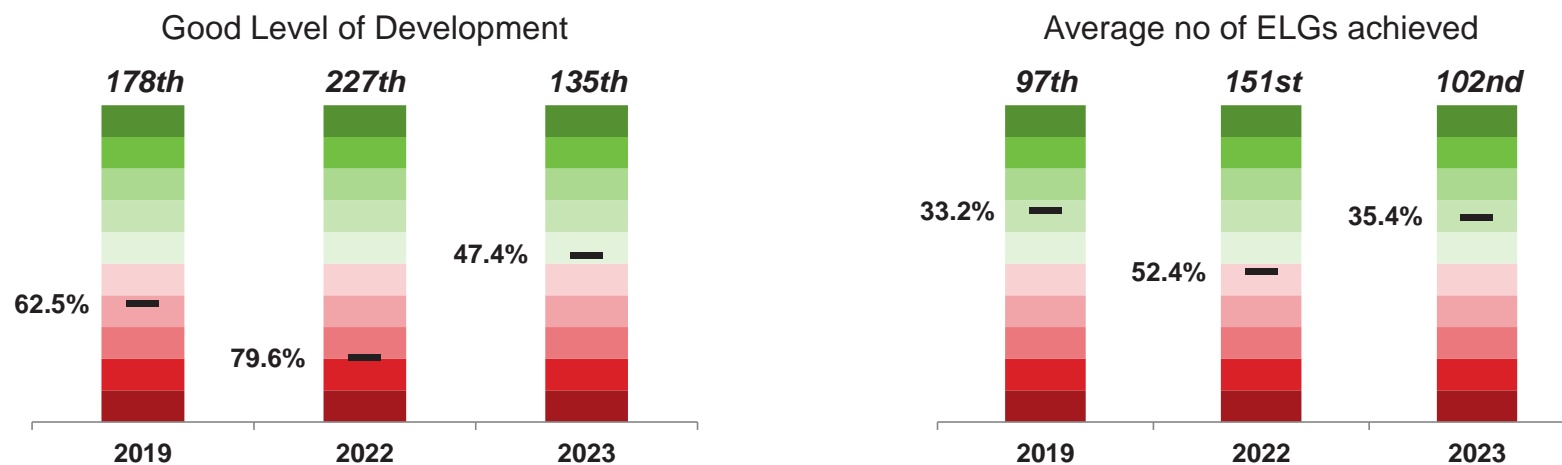


**St John and Monica Catholic Primary School**

	Trend			Comparison to Setting											
	School Attainment			Moseley ward			Hall Green			Birmingham			National		
	% Diff	Pupils	Average	% Diff	Pupils	Above	% Diff	Pupils	Above	% Diff	Pupils	Above	% Diff	Pupils	Above
<i>In 2023 this setting had 30 pupils at the end of EY</i>															
<b>% achieving GLD</b>	12.2	4	63.4	-0.3	0	0	1	0	1	1.2	0	1	-0.6	0	0
% at least expected level across all early learning goals	12.2	4	63.4	2.2	1	1	2.5	1	2	3	1	2	1	0	1
% at least expected across all prime areas of learning	9.7	3	69.5	1.3	0	1	1.2	0	1	1.2	0	1	-1.7	-1	0
% at least expected across all specific areas of learning	12.2	4	63.4	0.2	0	1	2.3	1	1	2.6	1	1	-0.3	0	0
Average number of ELG achieved	0.6		14.1	0.3		2	0.6		3	0.7		3	0		0
% achieving Communication and Language	13.1	4	73.2	-0.8	0	0	1.6	0	2	0.9	0	1	-3	-1	0
% achieving Physical Development	12.7	4	84.1	7.5	2	1	7.7	2	2	7.8	2	2	4.8	1	1
% achieving Personal, Social and Emotional Development	-10.9	-3	82.9	-1.5	0	1	-1.9	-1	2	-0.3	0	1	-3.2	-1	1
% achieving Literacy	12.2	4	63.4	-3.3	-1	0	-0.4	0	0	-0.2	0	0	-3.1	-1	0
% achieving Mathematics	8.5	3	73.2	-0.8	0	0	4.7	1	2	4.2	1	2	-0.5	0	0
% achieving Understanding the World	-3.1	-1	82.9	6.8	2	2	8.8	3	3	8.1	2	3	3	1	2
% achieving Expressive arts and design	14	4	85.4	5.2	2	2	6.2	2	2	6.7	2	2	1.7	1	2

Note: above graded colour scale based on displayed figures only, it is intended only to help quickly identify areas of strengths and weaknesses

**Percentile and Ranking Trends**



Schools and academies are ranked purely on the basis of the attainment measure being displayed, with 1st being the highest achieving out of 0 in Birmingham. The percentile is calculated using normalised score of 1 - 100 and represents the percentage of schools in Birmingham achieving a higher outcome.

**Trend Explained**  
**% Diff** - Compares current year to previous year by % of pupils achieving  
**Pupils** - The difference in current year from previous by number of pupils achieving  
**Average** - Represents a 3 year rolling average for the indicated measure

**Comparison Explained (relates to current year only)**  
**% Diff** - Compares school/academy to indicated benchmark by % of pupils achieving  
**Pupils** - Represents the % Diff in pupil numbers e.g. -2 would mean you are were 2 children away from achieving the average for the benchmark.  
**Above** - Shows how many times you were above the average outcome for the indicated benchmark over the past 3 years.

St John and Monica Catholic Primary School

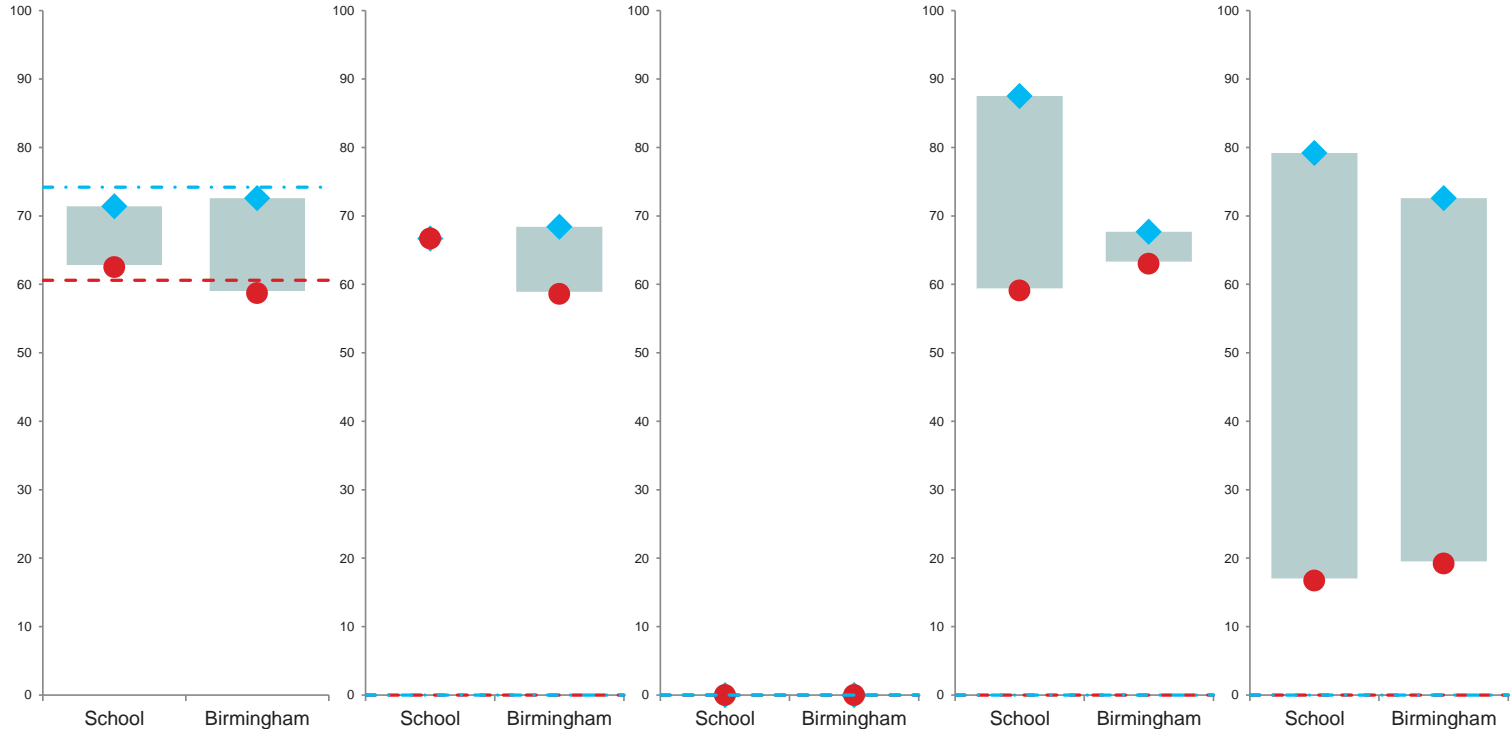
	Gender			Free School Meals			Disadvantaged			Language			Special Educational Needs			
	Boys	Girls	Gap	Yes	No	Gap	Yes	No	Gap	EAL	Non	Gap	All SEN	ECHP	Support	Non
Eligible pupils	16	14		6	24		-	-		22	8		6	1	5	24
<b>% GLD</b>	<b>62.5</b>	<b>71.4</b>	<b>-8.9</b>	<b>66.7</b>	<b>66.7</b>	<b>0</b>	-	-		<b>59.1</b>	<b>87.5</b>	<b>-28.4</b>	<b>16.7</b>	<b>0</b>	<b>20</b>	<b>79.2</b>
% All early learning Goals	62.5	71.4	-8.9	66.7	66.7	0	-	-		59.1	87.5	-28.4	16.7	0	20	79.2
% Prime learning goals	68.8	78.6	-9.8	83.3	70.8	12.5	-	-		68.2	87.5	-19.3	16.7	0	20	87.5
% Specific learning goals	62.5	71.4	-8.9	66.7	66.7	0	-	-		59.1	87.5	-28.4	16.7	0	20	79.2
Average number of ELG achieved	14.2	14	0.2	15.5	13.8	1.7	-	-		13.3	16.2	-2.9	6.2	0	7.4	16.1
% Communication and Language	68.8	85.7	-16.9	100	70.8	29.2	-	-		68.2	100	-31.8	16.7	0	20	91.7
% Physical Development	93.8	85.7	8.1	83.3	91.7	-8.4	-	-		90.9	87.5	3.4	66.7	0	80	95.8
% Personal, Social and Emotional Development	75	85.7	-10.7	100	75	25	-	-		72.7	100	-27.3	33.3	0	40	91.7
% Literacy	62.5	71.4	-8.9	66.7	66.7	0	-	-		59.1	87.5	-28.4	16.7	0	20	79.2
% Mathematics	81.2	71.4	9.8	66.7	79.2	-12.5	-	-		72.7	87.5	-14.8	33.3	0	40	87.5
% Understanding the World	81.2	85.7	-4.5	100	79.2	20.8	-	-		77.3	100	-22.7	16.7	0	20	100
% Expressive arts and design	87.5	85.7	1.8	100	83.3	16.7	-	-		81.8	100	-18.2	33.3	0	40	100

The graphs to the right compare the percentage of children achieving a 'Good Level of Development' (GLD) by the pupil groups directly above.

The blue diamond represents the *nationally* higher achieving of the two corresponding groups, where as the red circle is the *nationally* lower achieving. The grey box inbetween the two markers represents the achievement gap.

The horizontal lines represent the same measures but for national outcomes.

- Legend**
- Gender
    - ◆ Girls
    - Boys
  - Free School Meals
    - ◆ non FSM
    - FSM
  - Disadvantaged
    - ◆ non Disadvantaged
    - Disadvantaged
  - Language
    - ◆ non EAL
    - EAL
  - SEN
    - ◆ No identified SEN
    - SEN



# Early Years Foundation Stage Profile Pupil Group Performance 2023

## Birmingham

	Gender			Free School Meals			Disadvantaged			Language			Special Educational Needs			
	Boys	Girls	Gap	Yes	No	Gap	Yes	No	Gap	EAL	Non	Gap	All SEN	ECHP	Support	Non
Eligible pupils	7607	7239		4408	10438		-	-		5999	8639		1981	342	1639	12865
<b>% GLD</b>	<b>58.7</b>	<b>72.6</b>	<b>-13.9</b>	<b>58.6</b>	<b>68.4</b>	<b>-9.8</b>	-	-		<b>63</b>	<b>67.7</b>	<b>-4.7</b>	<b>19.2</b>	<b>0.9</b>	<b>23</b>	<b>72.6</b>
% All early learning Goals	56.4	71.3	-14.9	56.5	66.7	-10.2	-	-		61.1	65.9	-4.8	18	0.6	21.7	70.7
% Prime learning goals	64.9	79.7	-14.8	67.4	74.1	-6.7	-	-		68.2	75.3	-7.1	22.7	1.5	27.1	79.7
% Specific learning goals	57.2	71.3	-14.1	56.7	67.2	-10.5	-	-		61.4	66.5	-5.1	19.8	1.2	23.7	70.9
Average number of ELG achieved	12.5	14.4	-1.9	12.7	13.7	-1	-	-		12.8	13.9	-1.1	6.1	0.9	7.2	14.5
% Communication and Language	70.1	81.8	-11.7	72.2	77.3	-5.1	-	-		70.5	79.8	-9.3	27.1	2.6	32.2	83.3
% Physical Development	75.2	89.5	-14.3	78.7	83.7	-5	-	-		80.7	83.3	-2.6	38.5	6.4	45.2	88.9
% Personal, Social and Emotional Development	74.4	86.4	-12	76.4	81.9	-5.5	-	-		77.6	82.4	-4.8	33	2.3	39.4	87.5
% Literacy	60.5	73.7	-13.2	59.6	70	-10.4	-	-		64.3	69.3	-5	22.9	2	27.2	73.7
% Mathematics	68.3	77	-8.7	65.8	75.4	-9.6	-	-		69.2	75.3	-6.1	30.6	4.7	36	79
% Understanding the World	69.8	80.8	-11	69.9	77.4	-7.5	-	-		69.2	79.6	-10.4	30.3	3.8	35.9	82.1
% Expressive arts and design	72.4	88	-15.6	76.4	81.5	-5.1	-	-		75.9	83	-7.1	36.6	3.2	43.6	86.7

## National

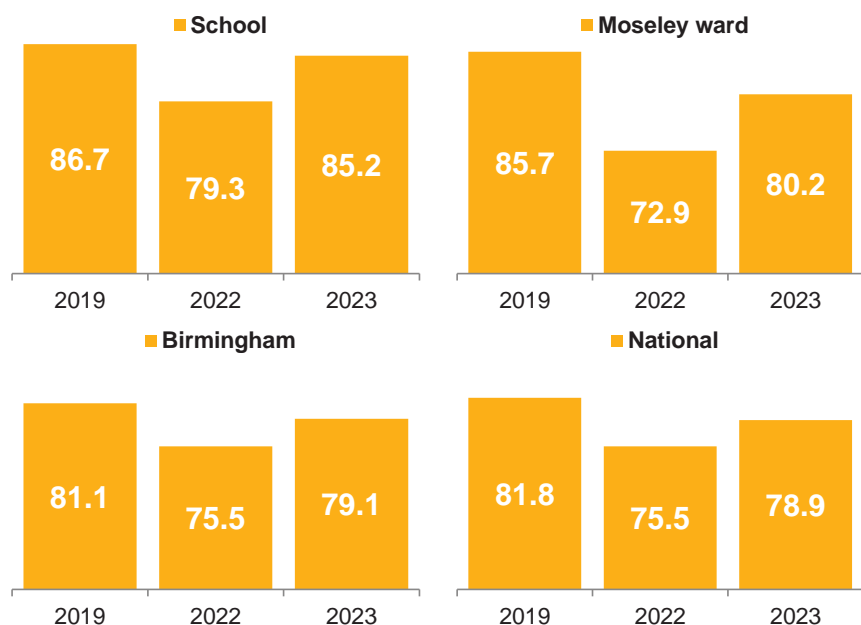
	Gender			Free School Meals			Disadvantaged			Language			Special Educational Needs			
	Boys	Girls	Gap	Yes	No	Gap	Yes	No	Gap	EAL	Non	Gap	All SEN	ECHP	Support	Non
Eligible pupils	313430	299040		np	np		np	np		np	np		np	np	np	np
<b>% GLD</b>	<b>60.6</b>	<b>74.2</b>	<b>-13.6</b>	<b>np</b>	<b>np</b>		<b>np</b>	<b>np</b>		<b>np</b>	<b>np</b>		<b>np</b>	<b>np</b>	<b>np</b>	<b>np</b>
% All early learning Goals	58.6	73.1	-14.5	np	np		np	np		np	np		np	np	np	np
% Prime learning goals	67.7	82.6	-14.9	np	np		np	np		np	np		np	np	np	np
% Specific learning goals	60.4	74	-13.6	np	np		np	np		np	np		np	np	np	np
Average number of ELG achieved	13.4	14.9	-1.5	np	np		np	np		np	np		np	np	np	np
% Communication and Language	74.3	85.4	-11.1	np	np		np	np		np	np		np	np	np	np
% Physical Development	78.8	91.9	-13.1	np	np		np	np		np	np		np	np	np	np
% Personal, Social and Emotional Development	77.4	89.4	-12	np	np		np	np		np	np		np	np	np	np
% Literacy	63.5	76.3	-12.8	np	np		np	np		np	np		np	np	np	np
% Mathematics	74.2	80.3	-6.1	np	np		np	np		np	np		np	np	np	np
% Understanding the World	75.9	84.9	-9	np	np		np	np		np	np		np	np	np	np
% Expressive arts and design	78.7	91.6	-12.9	np	np		np	np		np	np		np	np	np	np

Disadvantaged outcomes are not included for EYFSP as they are not published nationally, however in the majority of cases outcomes will be the same as the ones for free school meals

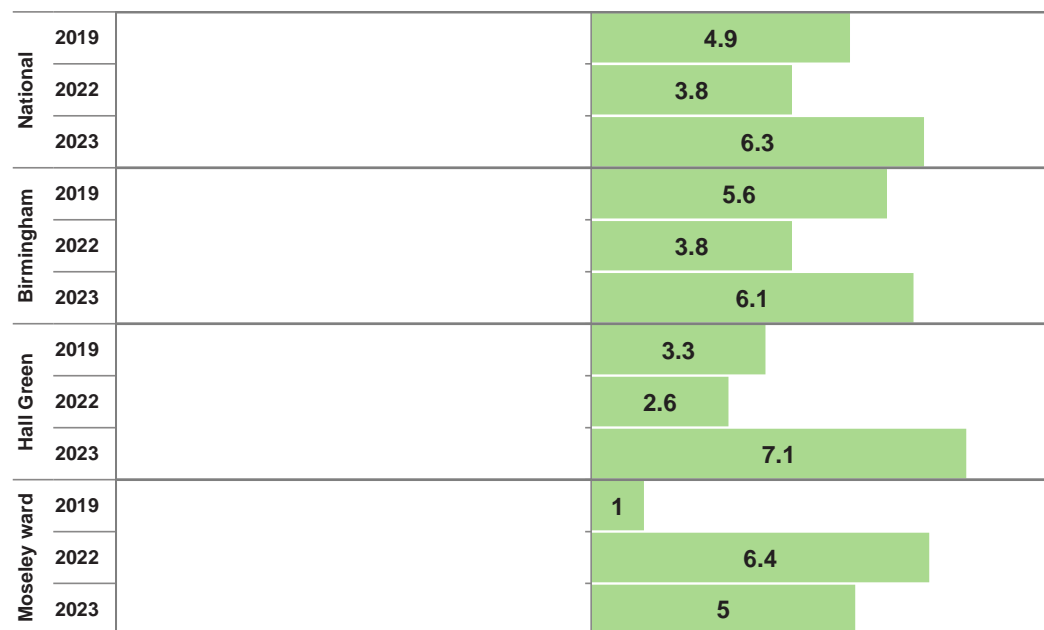
## Phonics

	School			Moseley ward			Hall Green			Birmingham			National		
	2019	2022	2023	2019	2022	2023	2019	2022	2023	2019	2022	2023	2019	2022	2023
<b>Year 1 Eligible pupils</b>	30	29	27	231	207	202	1751	1643	1647	16239	15662	15497	649152	636787	626520
% Absent	0	0	0	0.4	1	0	0.2	0.7	0.2	0.3	0.5	0.4	np	np	np
% Disapplied	0	0	0	0.9	3.4	2.5	1.1	3.1	3.5	2.1	2.9	3	np	np	np
% Working Towards	13.3	20.7	14.8	13	22.7	17.3	15.3	19.4	14.9	16.6	21.1	17	np	np	np
<b>% Working At</b>	<b>86.7</b>	<b>79.3</b>	<b>85.2</b>	<b>85.7</b>	<b>72.9</b>	<b>80.2</b>	<b>83.4</b>	<b>76.7</b>	<b>78.1</b>	<b>81.1</b>	<b>75.5</b>	<b>79.1</b>	<b>81.8</b>	<b>75.5</b>	<b>78.9</b>
<b>Eligible pupils at end of Key Stage 1</b>	30	30	30	242	215	211	1796	1648	1657	16585	15533	15833	665493	637861	635990
% Absent	0	0	0	0	1.4	0.5	0	0.5	0.2	0.1	0.3	0.2	np	np	np
% Disapplied	0	0	0	0.4	3.3	4.3	0.7	2.5	3	1.4	2.7	2.3	np	np	np
% Working Towards	3.3	10	10	5	6	7.1	7.9	8.9	6.6	8.4	10.5	9.6	np	np	np
<b>% Working At</b>	<b>96.7</b>	<b>90</b>	<b>90</b>	<b>94.6</b>	<b>89.3</b>	<b>88.2</b>	<b>91.4</b>	<b>88</b>	<b>88.7</b>	<b>90.2</b>	<b>86.5</b>	<b>87.7</b>	<b>91.4</b>	<b>86.9</b>	<b>88.6</b>

Reaching the expected standard of Phonics decoding in Y1



Attainment difference of school to indicated group Y1 Phonics



**St John and Monica Catholic Primary School**

*In 2023 this setting had 27 pupils at the end of Y1*

**Year 1 Eligible pupils**

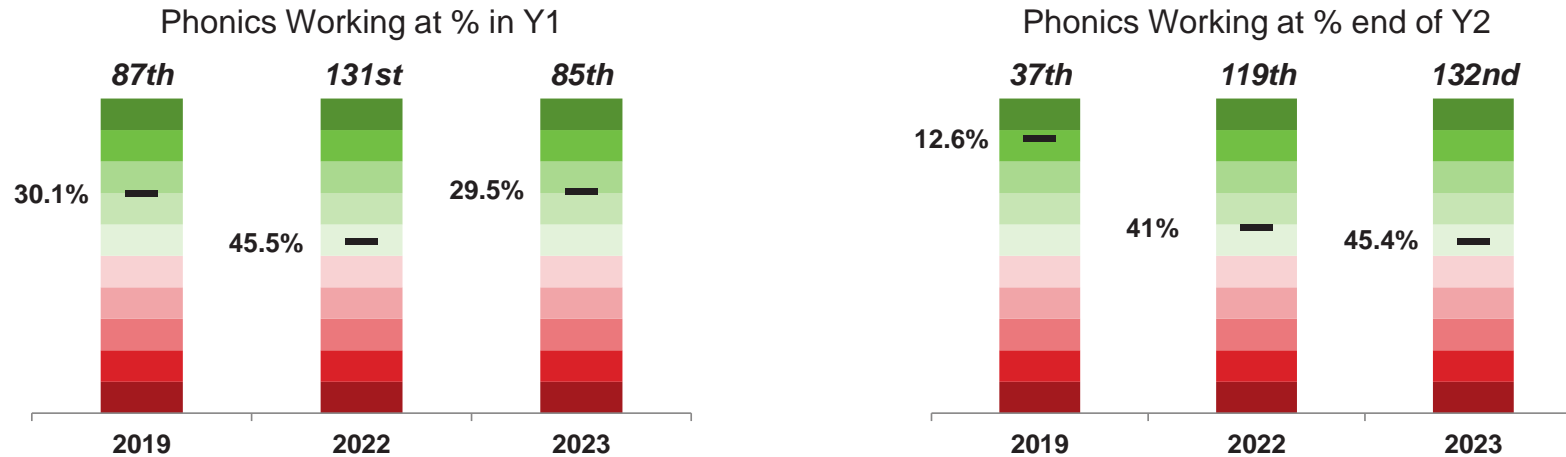
	Trend			Comparison to Setting											
	School Attainment			Moseley ward			Hall Green			Birmingham			National		
	% Diff	Pupils	Average	% Diff	Pupils	Above	% Diff	Pupils	Above	% Diff	Pupils	Above	% Diff	Pupils	Above
% Absent	0	0	0	0	0	0	-0.2	0	0	-0.4	0	0			
% Disapplied	0	0	0	-2.5	-1	0	-3.5	-1	0	-3	-1	0			
% Working Towards	-5.9	-2	16.3	-2.5	-1	1	-0.1	0	1	-2.2	-1	0			
<b>% Working At</b>	<b>5.9</b>	<b>2</b>	<b>83.7</b>	<b>5</b>	<b>1</b>	<b>3</b>	<b>7.1</b>	<b>2</b>	<b>3</b>	<b>6.1</b>	<b>2</b>	<b>3</b>	<b>6.3</b>	<b>2</b>	<b>3</b>

**Eligible pupils at end of Key Stage 1**

% Absent	0	0	0	-0.5	0	0	-0.2	0	0	-0.2	0	0			
% Disapplied	0	0	0	-4.3	-1	0	-3	-1	0	-2.3	-1	0			
% Working Towards	0	0	7.8	2.9	1	2	3.4	1	2	0.4	0	1			
<b>% Working At</b>	<b>0</b>	<b>0</b>	<b>92.2</b>	<b>1.8</b>	<b>0</b>	<b>3</b>	<b>1.3</b>	<b>0</b>	<b>3</b>	<b>2.3</b>	<b>1</b>	<b>3</b>	<b>1.4</b>	<b>0</b>	<b>3</b>

*Note: above graded colour scale based on displayed figures only, it is intended only to help quickly identify areas of strengths and weaknesses*

**Percentile and Ranking Trends**



*Schools and academies are ranked purely on the basis of the attainment measure being displayed, with 1st being the highest achieving out of 0 in Birmingham. The percentile is calculated using normalised score of 1 - 100 and represents the percentage of schools in Birmingham achieving a higher outcome.*

**Trend Explained**

**% Diff** - Compares current year to previous year by % of pupils achieving  
**Pupils** - The difference in current year from previous by number of pupils achieving  
**Average** - Represents a 3 year rolling average for the indicated measure

**Comparison Explained (relates to current year only)**

**% Diff** - Compares school/academy to indicated benchmark by % of pupils achieving  
**Pupils** - Represents the % Diff in pupil numbers e.g. -2 would mean you are were 2 children away from achieving the average for the benchmark.  
**Above** - Shows how many times you were above the average outcome for the indicated benchmark over the past 3 years.

# Phonics Pupil Group Performance 2023

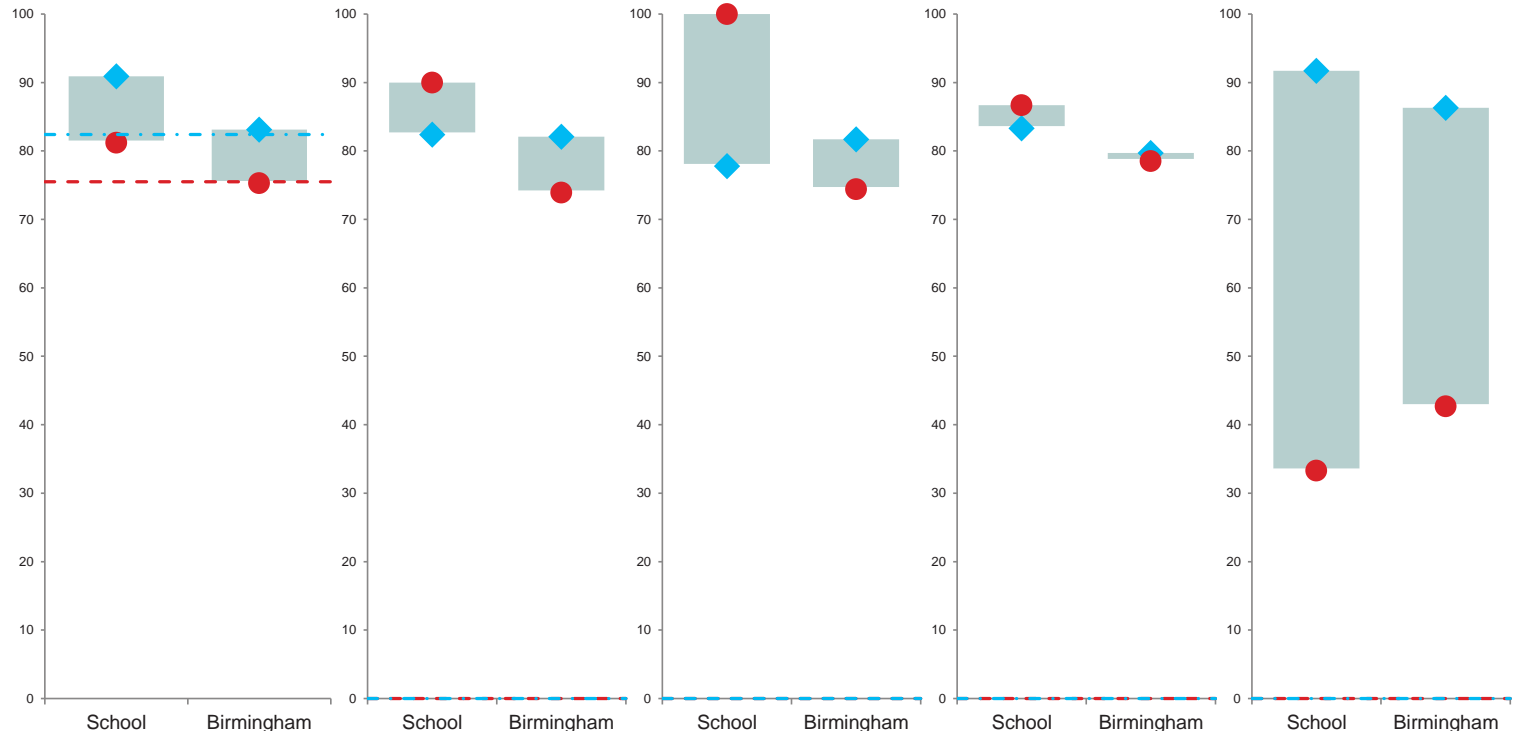
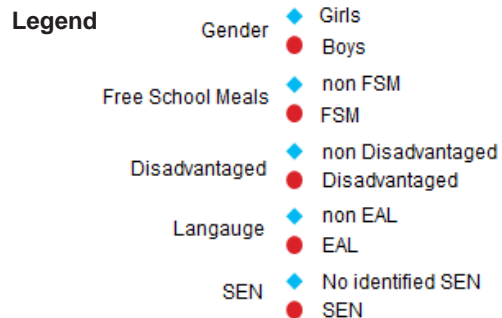
## St John and Monica Catholic Primary School

	Gender			Free School Meals			Disadvantaged			Language			Special Educational Needs			
	Boys	Girls	Gap	Yes	No	Gap	Yes	No	Gap	EAL	Non	Gap	All SEN	ECHP	Support	Non
<b>Year 1 Eligible pupils</b>	16	11		10	17		9	18		15	12		3	-	3	24
% Absent	0	0	0	0	0	0	0	0	0	0	0	0	0	-	0	0
% Disapplied	0	0	0	0	0	0	0	0	0	0	0	0	0	-	0	0
% Working Towards	18.8	9.1	9.7	10	17.6	-7.6	0	22.2	-22.2	13.3	16.7	-3.4	66.7	-	66.7	8.3
<b>% Working At</b>	<b>81.2</b>	<b>90.9</b>	<b>-9.7</b>	<b>90</b>	<b>82.4</b>	<b>7.6</b>	<b>100</b>	<b>77.8</b>	<b>22.2</b>	<b>86.7</b>	<b>83.3</b>	<b>3.4</b>	<b>33.3</b>	-	<b>33.3</b>	<b>91.7</b>
<b>Eligible pupils at end of Key Stage 1</b>	17	13		7	23		5	25		20	10		5	-	5	25
% Absent	0	0	0	0	0	0	0	0	0	0	0	0	0	-	0	0
% Disapplied	0	0	0	0	0	0	0	0	0	0	0	0	0	-	0	0
% Working Towards	17.6	0	17.6	0	13	-13	0	12	-12	10	10	0	40	-	40	4
<b>% Working At</b>	<b>82.4</b>	<b>100</b>	<b>-17.6</b>	<b>100</b>	<b>87</b>	<b>13</b>	<b>100</b>	<b>88</b>	<b>12</b>	<b>90</b>	<b>90</b>	<b>0</b>	<b>60</b>	-	<b>60</b>	<b>96</b>

The graphs to the right compare the percentage of children working at the expected level of Phonics decoding in Year 1 by the pupil groups directly above.

The blue diamond represents the *nationally* higher achieving of the two corresponding groups, where as the red circle is the *nationally* lower achieving. The grey box inbetween the two markers represents the achievement gap.

The horizontal lines represent the same measures but for national outcomes.



# Phonics Pupil Group Performance 2023

## Birmingham

	Gender			Free School Meals			Disadvantaged			Language			Special Educational Needs			
	Boys	Girls	Gap	Yes	No	Gap	Yes	No	Gap	EAL	Non	Gap	All SEN	ECHP	Support	Non
<b>Year 1 Eligible pupils</b>	7899	7598		5708	9789		5541	9956		6472	8908		2518	399	2119	12944
% Absent	0.5	0.3	0.2	0.5	0.3	0.2	0.5	0.4	0.1	0.6	0.3	0.3	0.4	0.8	0.3	0.4
% Disapplied	4.1	1.8	2.3	3.5	2.7	0.8	3.4	2.8	0.6	3.5	2.5	1	15.9	63.2	7	0.4
% Working Towards	19.7	14.2	5.5	21.5	14.3	7.2	21.2	14.6	6.6	17.1	16.9	0.2	40.8	24.8	43.8	12.3
<b>% Working At</b>	<b>75.3</b>	<b>83.1</b>	<b>-7.8</b>	<b>73.9</b>	<b>82.1</b>	<b>-8.2</b>	<b>74.4</b>	<b>81.7</b>	<b>-7.3</b>	<b>78.5</b>	<b>79.7</b>	<b>-1.2</b>	<b>42.7</b>	<b>10.8</b>	<b>48.7</b>	<b>86.3</b>
<b>Eligible pupils at end of Key Stage 1</b>	8100	7733		6209	9624		6229	9604		6400	9152		3030	472	2558	12794
% Absent	0.3	0.2	0.1	0.3	0.2	0.1	0.2	0.2	0	0.3	0.1	0.2	0.4	0.6	0.4	0.2
% Disapplied	3.2	1.4	1.8	2.9	1.9	1	2.9	1.9	1	2.2	2.3	-0.1	11.4	60.4	2.3	0.2
% Working Towards	11.3	7.8	3.5	12.1	7.9	4.2	12.1	8	4.1	9.9	8.6	1.3	28.4	24.4	29.1	5.1
<b>% Working At</b>	<b>85</b>	<b>90.5</b>	<b>-5.5</b>	<b>84.5</b>	<b>89.8</b>	<b>-5.3</b>	<b>84.6</b>	<b>89.7</b>	<b>-5.1</b>	<b>87.4</b>	<b>88.7</b>	<b>-1.3</b>	<b>59.6</b>	<b>14.6</b>	<b>67.9</b>	<b>94.4</b>

## National

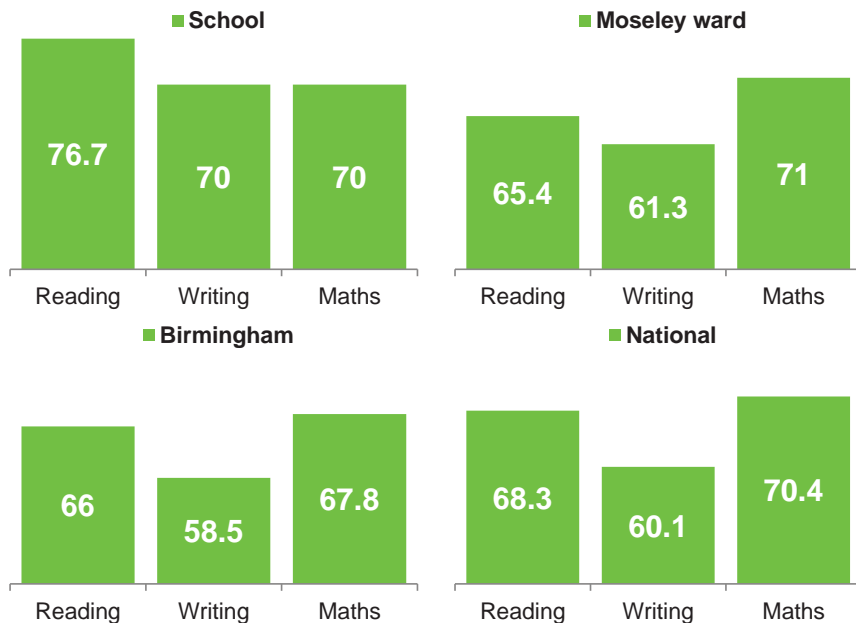
	Gender			Free School Meals			Disadvantaged			Language			Special Educational Needs			
	Boys	Girls	Gap	Yes	No	Gap	Yes	No	Gap	EAL	Non	Gap	All SEN	ECHP	Support	Non
<b>Year 1 Eligible pupils</b>	320990	305410		np	np		np	np		np	np		np	np	np	np
% Absent	np	np		np	np		np	np		np	np		np	np	np	np
% Disapplied	np	np		np	np		np	np		np	np		np	np	np	np
% Working Towards	np	np		np	np		np	np		np	np		np	np	np	np
<b>% Working At</b>	<b>75.5</b>	<b>82.4</b>	<b>-6.9</b>	<b>np</b>	<b>np</b>		<b>np</b>	<b>np</b>		<b>np</b>	<b>np</b>		<b>np</b>	<b>np</b>	<b>np</b>	<b>np</b>
<b>Eligible pupils at end of KS1</b>	325260	310730		np	np		np	np		np	np		np	np	np	np
% Absent	np	np		np	np		np	np		np	np		np	np	np	np
% Disapplied	np	np		np	np		np	np		np	np		np	np	np	np
% Working Towards	np	np		np	np		np	np		np	np		np	np	np	np
<b>% Working At</b>	<b>86.2</b>	<b>91.1</b>	<b>-4.9</b>	<b>np</b>	<b>np</b>		<b>np</b>	<b>np</b>		<b>np</b>	<b>np</b>		<b>np</b>	<b>np</b>	<b>np</b>	<b>np</b>



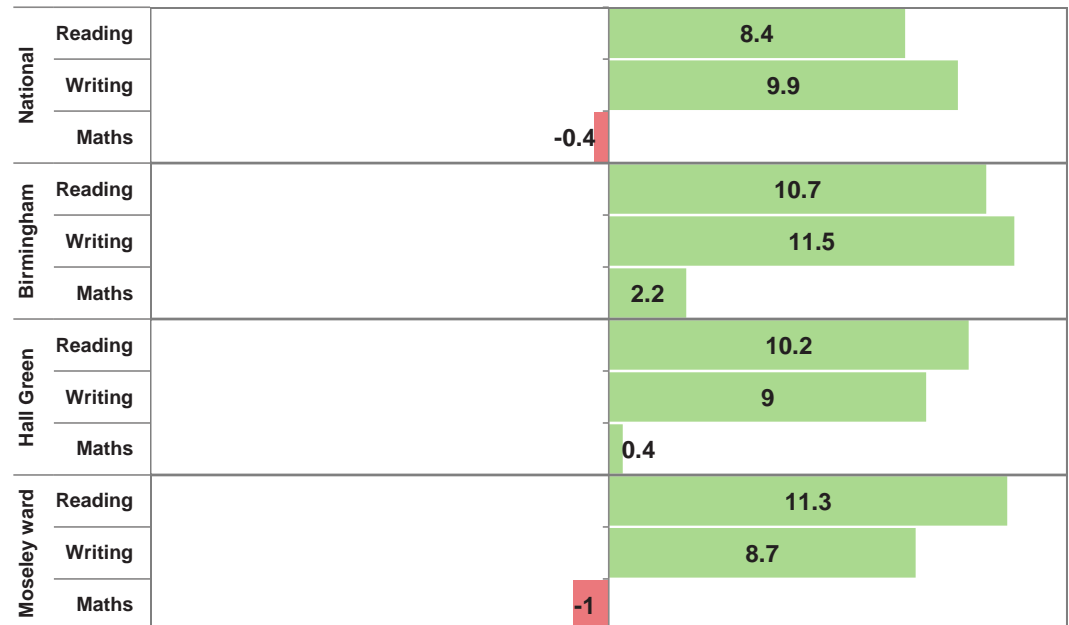
## Key stage 1

	School			Moseley ward			Hall Green			Birmingham			National		
	2019	2022	2023	2019	2022	2023	2019	2022	2023	2019	2022	2023	2019	2022	2023
Eligible pupils	30	30	30	242	215	217	1799	1651	1673	16631	15580	16021	666549	639415	643300
% At least Expected Reading	83.3	70	76.7	78.5	71.6	65.4	73.9	67.2	66.5	72.1	65	66	74.9	66.9	68.3
% Greater Depth Reading	26.7	26.7	26.7	27.7	16.7	19.8	23.2	13.6	16.4	20.3	14	14.8	25	18	18.8
% At least Expected Writing	80	63.3	70	72.7	61.4	61.3	69.1	59.1	61	66.8	56.3	58.5	69.2	57.6	60.1
% Greater Depth Writing	13.3	16.7	10	18.6	8.4	9.7	15.5	6.4	7.3	12.1	5.9	6.5	14.8	8	8.2
% At least Expected Maths	76.7	70	70	82.2	71.2	71	75.4	67.1	69.6	73.3	65.3	67.8	75.6	67.6	70.4
% Greater Depth Maths	13.3	20	10	22.7	15.3	18.9	22.1	12.1	16	18.6	12.1	13.5	21.7	15.1	16.3
% Expected Science	86.7	73.3	86.7	83.1	79.1	81.1	79.5	75.5	77.3	77.4	71.5	73.5	82.3	77.1	78.7
% at least Expected Reading, Writing & Maths	73.3	60	66.7	68.6	56.3	56.7	65.5	54.8	57.2	62.7	51.9	54.8	0	0	56
% Greater Depth Reading, Writing & Maths	10	13.3	6.7	14	6.5	8.8	11.3	4.5	5.8	9.1	4.4	5	0	0	6.2

Reaching at least the expected standard current year



Attainment difference of school to indicated subject in current year



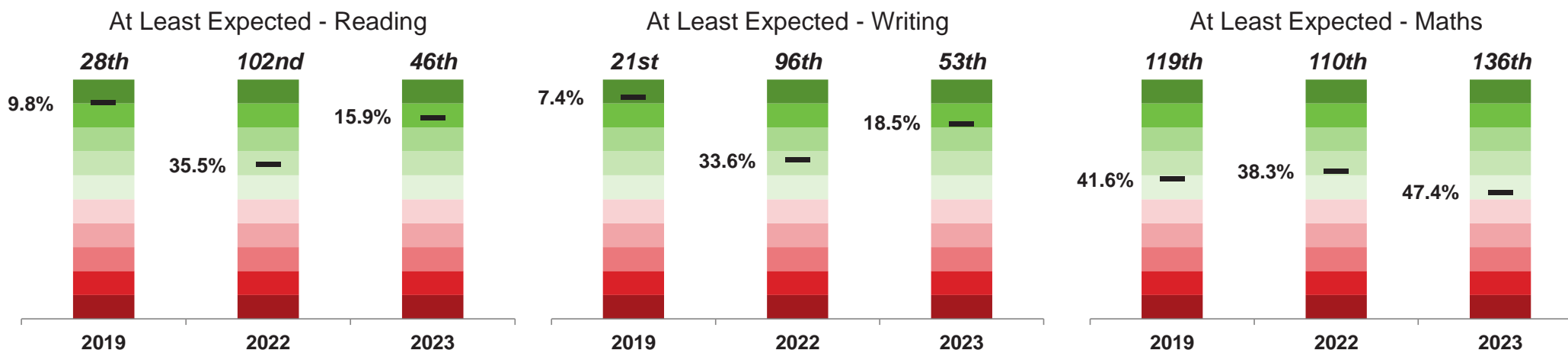
# Key stage 1 Performance Trends and Comparisons 2023

## St John and Monica Catholic Primary School

	Trend			Comparison to Setting											
	School Attainment			Moseley ward			Hall Green			Birmingham			National		
	% Diff	Pupils	Average	% Diff	Pupils	Above	% Diff	Pupils	Above	% Diff	Pupils	Above	% Diff	Pupils	Above
<i>In 2023 this setting had 30 pupils at the end of KS1</i>															
% At least Expected Reading	6.7	2	76.7	11.3	3	2	10.2	3	3	10.7	3	3	8.4	3	3
% Greater Depth Reading	0	0	26.7	6.9	2	2	10.3	3	3	11.9	4	3	7.9	2	3
% At least Expected Writing	6.7	2	71.1	8.7	3	3	9	3	3	11.5	3	3	9.9	3	3
% Greater Depth Writing	-6.7	-2	13.3	0.3	0	2	2.7	1	2	3.5	1	3	1.8	1	2
% At least Expected Maths	0	0	72.2	-1	0	0	0.4	0	3	2.2	1	3	-0.4	0	2
% Greater Depth Maths	-10	-3	14.4	-8.9	-3	1	-6	-2	1	-3.5	-1	1	-6.3	-2	1
% Expected Science	13.4	4	82.2	5.6	2	2	9.4	3	2	13.2	4	3	8	2	2
% at least Expected Reading, Writing & Maths	6.7	2	66.7	10	3	3	9.5	3	3	11.9	4	3	10.7	3	3
% Greater Depth Reading, Writing & Maths	-6.6	-2	10	-2.1	-1	1	0.9	0	2	1.7	1	3	0.5	0	3

Note: above graded colour scale based on displayed figures only, it is intended only to help quickly identify areas of strengths and weaknesses

## Percentile and Ranking Trends



Schools and academies are ranked purely on the basis of the attainment measure being displayed, with 1st being the highest achieving out of 303 in Birmingham. The percentile is calculated using normalised score of 1 - 100 and represents the percentage of schools in Birmingham achieving a higher outcome.

### Trend Explained

**% Diff** - Compares current year to previous year by % of pupils achieving  
**Pupils** - The difference in current year from previous by number of pupils achieving  
**Average** - Represents a 3 year rolling average for the indicated measure

### Comparison Explained (relates to current year only)

**% Diff** - Compares school/academy to indicated benchmark by % of pupils achieving  
**Pupils** - Represents the % Diff in pupil numbers e.g. -2 would mean you are were 2 children away from achieving the average for the benchmark.  
**Above** - Shows how many times you were above the average outcome for the indicated benchmark over the past 3 years.

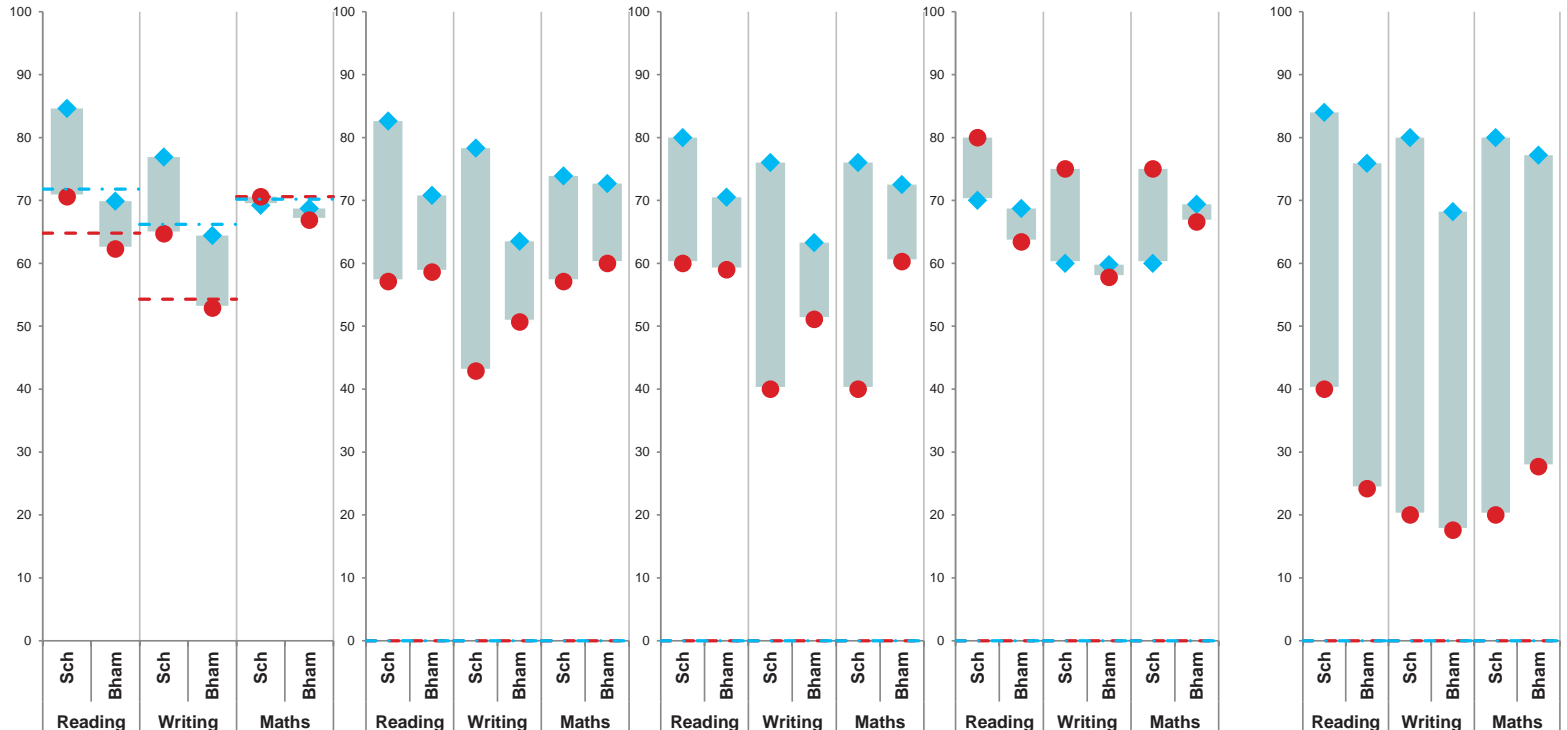
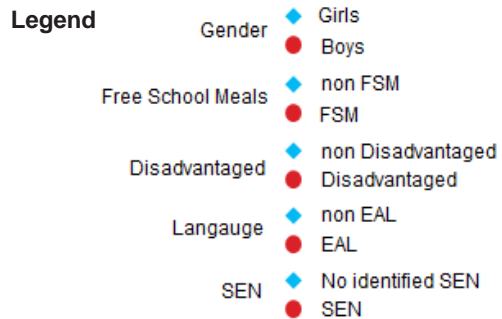
St John and Monica Catholic Primary School

	Gender			Free School Meals			Disadvantaged			Language			Special Educational Needs			
	Boys	Girls	Gap	Yes	No	Gap	Yes	No	Gap	EAL	Non	Gap	All SEN	ECHP	Support	Non
Eligible pupils	17	13		7	23		5	25		20	10		5	-	5	25
% At least Expected Reading	70.6	84.6	-14	57.1	82.6	-25.5	60	80	-20	80	70	10	40	-	40	84
% Greater Depth Reading	11.8	46.2	-34.4	0	34.8	-34.8	0	32	-32	20	40	-20	20	-	20	28
% At least Expected Writing	64.7	76.9	-12.2	42.9	78.3	-35.4	40	76	-36	75	60	15	20	-	20	80
% Greater Depth Writing	0	23.1	-23.1	0	13	-13	0	12	-12	10	10	0	0	-	0	12
% At least Expected Maths	70.6	69.2	1.4	57.1	73.9	-16.8	40	76	-36	75	60	15	20	-	20	80
% Greater Depth Maths	5.9	15.4	-9.5	0	13	-13	0	12	-12	5	20	-15	20	-	20	8
% Expected Science	82.4	92.3	-9.9	71.4	91.3	-19.9	80	88	-8	80	100	-20	60	-	60	92
% at least Expected Reading, Writing & Maths	64.7	69.2	-4.5	42.9	73.9	-31	40	72	-32	70	60	10	20	-	20	76
% Greater Depth Reading, Writing & Maths	0	15.4	-15.4	0	8.7	-8.7	0	8	-8	5	10	-5	0	-	0	8

The graphs to the right compare the percentage of children achieving at least the expected standard by the pupil groups directly above.

The blue diamond represents the *nationally* higher achieving of the two corresponding groups, where as the red circle is the *nationally* lower achieving. The grey box inbetween the two markers represents the achievement gap.

The horizontal lines represent the same measures but for national outcomes.



# Key stage 1 Pupil Group Performance 2023

## Birmingham

	Gender			Free School Meals			Disadvantaged			Language			Special Educational Needs			
	Boys	Girls	Gap	Yes	No	Gap	Yes	No	Gap	EAL	Non	Gap	All SEN	ECHP	Support	Non
Eligible pupils	8189	7832		6259	9762		6249	9772		6486	9218		3041	478	2563	12964
% At least Expected Reading	62.3	69.9	-7.6	58.6	70.8	-12.2	59	70.5	-11.5	63.4	68.7	-5.3	24.2	4.4	27.9	75.9
% Greater Depth Reading	13.5	16.1	-2.6	9.6	18.1	-8.5	9.6	18.1	-8.5	12	17	-5	2.9	1	3.2	17.6
% At least Expected Writing	52.9	64.4	-11.5	50.7	63.5	-12.8	51.1	63.3	-12.2	57.8	59.8	-2	17.6	2.3	20.4	68.2
% Greater Depth Writing	5.3	7.8	-2.5	3.7	8.4	-4.7	3.7	8.4	-4.7	5.6	7.3	-1.7	0.9	0.2	1	7.9
% At least Expected Maths	66.9	68.7	-1.8	60	72.7	-12.7	60.3	72.5	-12.2	66.6	69.4	-2.8	27.7	5.6	31.8	77.2
% Greater Depth Maths	16	11	5	8.6	16.7	-8.1	8.6	16.7	-8.1	12.5	14.4	-1.9	3.3	0.4	3.9	16
% Expected Science	70.5	76.7	-6.2	67.6	77.3	-9.7	68.1	77	-8.9	69.7	77.3	-7.6	33.6	6.1	38.7	83
% at least Expected Reading, Writing & Maths	50.5	59.3	-8.8	46.8	59.9	-13.1	47.1	59.7	-12.6	54.2	55.9	-1.7	15.2	2.3	17.6	64.1
% Greater Depth Reading, Writing & Maths	4.5	5.6	-1.1	2.7	6.5	-3.8	2.7	6.5	-3.8	4.3	5.7	-1.4	0.7	0	0.8	6.1

## National

	Gender			Free School Meals			Disadvantaged			Language			Special Educational Needs			
	Boys	Girls	Gap	Yes	No	Gap	Yes	No	Gap	EAL	Non	Gap	All SEN	ECHP	Support	Non
Eligible pupils	328970	314280		np	np		np	np		np	np		np	np	np	np
% At least Expected Reading	64.8	71.8	-7	np	np		np	np		np	np		np	np	np	np
% Greater Depth Reading	16.9	20.7	-3.8	np	np		np	np		np	np		np	np	np	np
% At least Expected Writing	54.3	66.2	-11.9	np	np		np	np		np	np		np	np	np	np
% Greater Depth Writing	6.4	10.1	-3.7	np	np		np	np		np	np		np	np	np	np
% At least Expected Maths	70.6	70.2	0.4	np	np		np	np		np	np		np	np	np	np
% Greater Depth Maths	19.5	13.1	6.4	np	np		np	np		np	np		np	np	np	np
% Expected Science	76.5	81	-4.5	np	np		np	np		np	np		np	np	np	np
% at least Expected Reading, Writing & Maths	51.7	60.6	-8.9	np	np		np	np		np	np		np	np	np	np
% Greater Depth Reading, Writing & Maths	5.5	6.9	-1.4	np	np		np	np		np	np		np	np	np	np

## Key stage 2 performance part 1

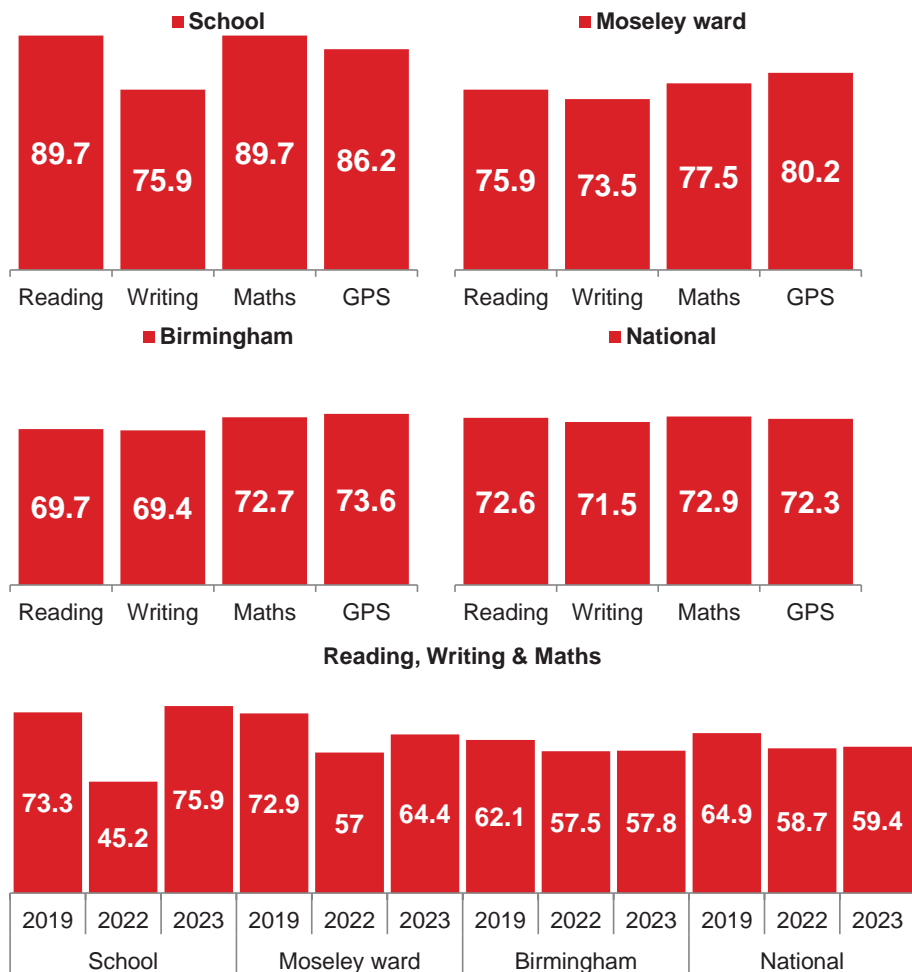
	School			Moseley ward			Hall Green			Birmingham			National		
	2019	2022	2023	2019	2022	2023	2019	2022	2023	2019	2022	2023	2019	2022	2023
Eligible pupils	30	31	29	203	235	253	1905	1780	1772	16232	16513	16738	644769	666066	673364
<b>% at least Expected Reading Test</b>	<b>80</b>	<b>74.2</b>	<b>89.7</b>	<b>79.8</b>	<b>78.7</b>	<b>75.9</b>	<b>71.7</b>	<b>74.7</b>	<b>70.9</b>	<b>69.8</b>	<b>73.9</b>	<b>69.7</b>	<b>73.2</b>	<b>74.6</b>	<b>72.6</b>
% High standard Reading Test	33.3	32.3	48.3	36	29.8	38.3	28.7	26.8	29.9	24.8	27.2	27	27	28	29
Scaled Score Reading	106.4	103.7	109.2	106.5	105.2	106.6	104.3	104.7	105.1	103.7	104.6	104.5	104.4	104.8	105.1
<b>% at least Expected Writing TA</b>	<b>76.7</b>	<b>48.4</b>	<b>75.9</b>	<b>85.2</b>	<b>62.1</b>	<b>73.5</b>	<b>79.1</b>	<b>64.1</b>	<b>72</b>	<b>76.2</b>	<b>67.2</b>	<b>69.4</b>	<b>78.4</b>	<b>69.4</b>	<b>71.5</b>
% Greater Depth Writing TA	26.7	0	6.9	22.2	9.4	12.3	17.7	9.1	10.9	16.2	10.2	10.2	20.1	12.8	13.3
<b>% at least Expected Maths Test</b>	<b>83.3</b>	<b>64.5</b>	<b>89.7</b>	<b>81.8</b>	<b>74.9</b>	<b>77.5</b>	<b>80.7</b>	<b>73.2</b>	<b>76.2</b>	<b>76.9</b>	<b>70.5</b>	<b>72.7</b>	<b>78.7</b>	<b>71.5</b>	<b>72.9</b>
% High Maths Test	36.7	29	37.9	33.5	29.4	30.8	32.1	24.4	28.9	26.7	22.6	25	26.6	22.5	23.8
Scaled Score Maths	107	103.5	107.7	106.2	105.1	105.7	106	104.5	105.3	104.9	103.7	104.3	105	103.8	104.2
% at least Expected GPS Test	83.3	71	86.2	86.7	80.9	80.2	82.6	76.7	75.8	79.2	74.5	73.6	78	72.5	72.3
% High GPS Test	63.3	29	55.2	48.3	34.5	43.1	46.7	33.4	39.7	40.5	32.1	34.4	35.7	28.2	30.1
Scaled Score GPS	110.3	104.7	110.5	109	107.2	107.3	108.3	106.2	106.5	107.2	105.8	105.6	106.3	105.1	104.9
<b>% at least Expected Reading, Writing &amp; Maths</b>	<b>73.3</b>	<b>45.2</b>	<b>75.9</b>	<b>72.9</b>	<b>57</b>	<b>64.4</b>	<b>66.4</b>	<b>56</b>	<b>61.3</b>	<b>62.1</b>	<b>57.5</b>	<b>57.8</b>	<b>64.9</b>	<b>58.7</b>	<b>59.4</b>
% Higher Standard Reading, Writing & Maths	23.3	0	6.9	15.3	7.7	9.5	11.4	5.8	7.6	9.4	6.4	6.8	10.6	7.2	7.9
Progress Reading	-0.89	1.14	4.53	1.89	0.48	1.15	0.42	0.79	0.5	-0.09	0.64	0.18	0.03	0.04	0.04
<i>Reading standard deviation ±</i>	2.21	2.29	2.42	0.86	0.83	0.81	0.29	0.3	0.31	0.1	0.1	0.1			
Progress Writing	-2.01	-3.12	-0.15	1.12	-1.47	-0.47	0.29	-0.31	0.18	-0.16	0.05	0.08	0.03	0.05	0.04
<i>Writing standard deviation ±</i>	2.01	2.22	2.35	0.78	0.77	0.77	0.31	0.31	0.32	0.06	0.05	0.12			
Progress Maths	-0.84	1.88	3.23	1.02	1.32	0.99	1.37	1.21	1.43	0.33	0.59	0.7	0.03	0.04	0.04
<i>Maths standard deviation ±</i>	1.93	2.13	2.27	0.75	0.78	0.76	0.25	0.28	0.29	0.09	0.09	0.09			
<b>Floor Standard</b>	Min	School	Below?	<b>Floor eligibility criteria</b>			Min	School							
Attainment (RWM)	65	75.9	No	Eligible pupils			11	29							
Reading Progress	-5	4.53	No	Pupils with KS1 assessments			-	26							
Writing Progress	-7	-0.15	No	% with KS1 assessments			50	90							
Maths Progress	-5	3.23	No	Special / Alternate provision?			No	No							

### School Above Floor

Key stage 2 data is based on the Provisional data release

## Key stage 2 performance part 2

Reaching at least the expected standard current year



Attainment difference of school to indicated subject in current year

Area	Subject	Attainment Difference
National	Reading	17.1
	Writing	4.4
	Maths	16.8
	GPS	13.9
	RWM	16.5
Birmingham	Reading	20
	Writing	6.5
	Maths	17
	GPS	12.6
	RWM	18.1
Hall Green	Reading	18.8
	Writing	3.9
	Maths	13.5
	GPS	10.4
	RWM	14.6
Moseley ward	Reading	13.8
	Writing	2.4
	Maths	12.2
	GPS	6
	RWM	11.5

Key stage 2 data is based on the Provisional data release

# Key stage 2 Performance Trends and Comparisons 2023

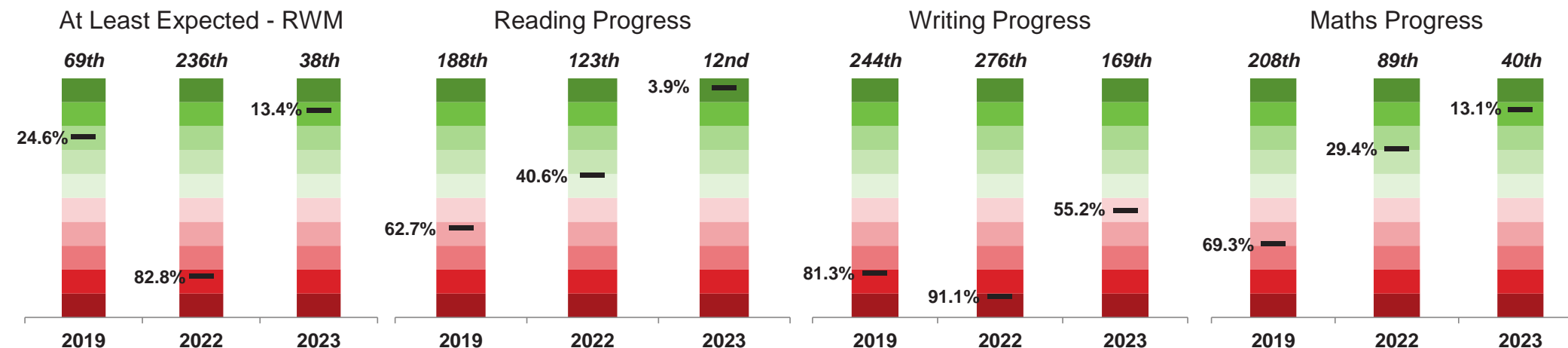
## St John and Monica Catholic Primary School

In 2023 this setting had 29 pupils at the end of KS2

	Trend			Comparison to Setting											
	School Attainment			Moseley ward			Hall Green			Birmingham			National		
	% Diff	Pupils	Average	% Diff	Pupils	Above	% Diff	Pupils	Above	% Diff	Pupils	Above	% Diff	Pupils	Above
<b>% at least Expected Reading Test</b>	15.5	4	81.1	13.8	4	2	18.8	5	2	20	6	3	17.1	5	2
% High standard Reading Test	16	5	37.8	10	3	2	18.4	5	3	21.3	6	3	19.3	6	3
Scaled Score Reading	5.5		106.4	2.6		1	4.1		2	4.7		2	4.1		2
<b>% at least Expected Writing TA</b>	27.5	8	66.7	2.4	1	1	3.9	1	1	6.5	2	2	4.4	1	1
% Greater Depth Writing TA	6.9	2	11.1	-5.4	-2	1	-4	-1	1	-3.3	-1	1	-6.4	-2	1
<b>% at least Expected Maths Test</b>	25.2	7	78.9	12.2	4	2	13.5	4	2	17	5	2	16.8	5	2
% High Maths Test	8.9	3	34.4	7.1	2	2	9	3	3	12.9	4	3	14.1	4	3
Scaled Score Maths	4.2		106	2		2	2.4		2	3.4		2	3.5		2
% at least Expected GPS Test	15.2	4	80	6	2	1	10.4	3	2	12.6	4	2	13.9	4	2
% High GPS Test	26.2	8	48.9	12.1	4	2	15.5	4	2	20.8	6	2	25.1	7	3
Scaled Score GPS	5.8		108.4	3.2		2	4		2	4.9		2	5.6		2
<b>% at least Expected Reading, Writing &amp; Maths</b>	30.7	9	64.4	11.5	3	2	14.6	4	2	18.1	5	2	16.5	5	2
% Higher Standard Reading, Writing & Maths	6.9	2	10	-2.6	-1	1	-0.7	0	1	0.1	0	2	-1	0	1
Progress Reading	3.39			3.38		2	4.03		2	4.35		2	4.49		2
Progress Writing	2.97			0.32		1	-0.33		0	-0.23		0	-0.19		0
Progress Maths	1.35			2.24		2	1.8		2	2.53		2	3.19		2

Note: above graded colour scale based on displayed figures only and treat attainment and progress separately, it is intended only to help quickly identify areas of strengths and weaknesses

## Percentile and Ranking Trends



Schools and academies are ranked purely on the basis of the attainment / progress measure being displayed, with 1st being the highest achieving out of 305 in Birmingham  
The percentile is calculated using normalised score of 1 - 100 and represents the percentage of schools in Birmingham achieving a higher outcome.

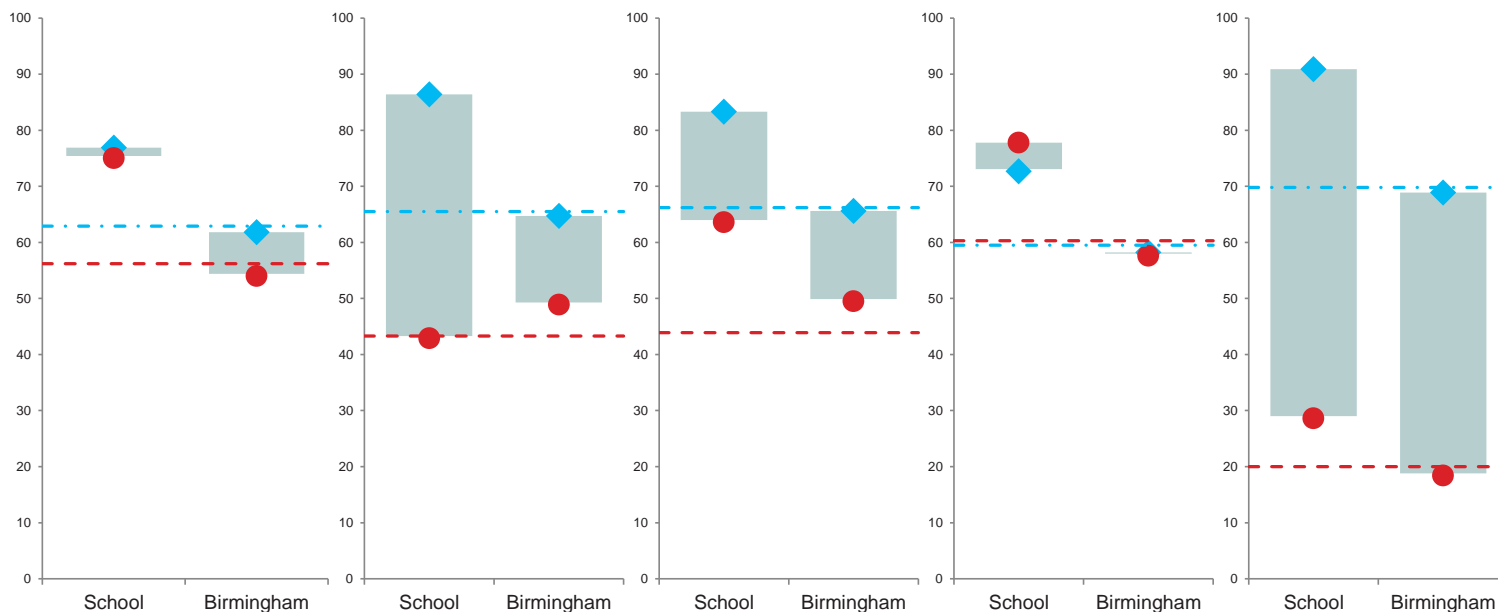
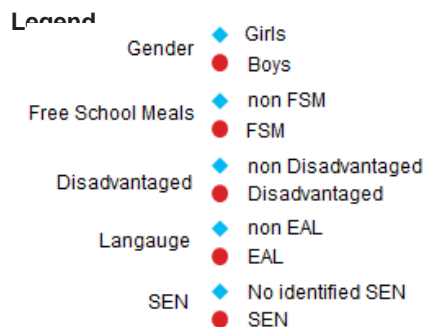
# Key stage 2 Group Performance 2023 (Provisional)

## St John and Monica Catholic Primary School

	Gender			Free School Meals			Disadvantaged			Language			Special Educational Needs			
	Boys	Girls	Gap	Yes	No	Gap	Yes	No	Gap	EAL	Non	Gap	All SEN	ECHP	Support	Non
Eligible pupils	16	13		7	22		11	18		18	11		7	2	5	22
<b>% at least Expected Reading Test</b>	87.5	92.3	-4.8	71.4	95.5	-24.1	81.8	94.4	-12.6	88.9	90.9	-2	71.4	50	80	95.5
% High standard Reading Test	50	46.2	3.8	28.6	54.5	-25.9	45.5	50	-4.5	55.6	36.4	19.2	42.9	0	60	50
Scaled Score Reading	108.9	109.6	-0.7	106.7	109.9	-3.2	108.4	109.7	-1.3	109.3	109.1	0.2	108.2	105	108.8	109.5
<b>% at least Expected Writing TA</b>	75	76.9	-1.9	42.9	86.4	-43.5	63.6	83.3	-19.7	77.8	72.7	5.1	28.6	0	40	90.9
% Greater Depth Writing TA	6.2	7.7	-1.5	0	9.1	-9.1	0	11.1	-11.1	0	18.2	-18.2	0	0	0	9.1
<b>% at least Expected Maths Test</b>	87.5	92.3	-4.8	71.4	95.5	-24.1	81.8	94.4	-12.6	88.9	90.9	-2	71.4	50	80	95.5
% High Maths Test	43.8	30.8	13	14.3	45.5	-31.2	36.4	38.9	-2.5	50	18.2	31.8	0	0	0	50
Scaled Score Maths	107.9	107.5	0.4	105.5	108.3	-2.8	108.3	107.4	0.9	109.6	104.8	4.8	103	100	103.6	109
% at least Expected GPS Test	81.2	92.3	-11.1	57.1	95.5	-38.4	72.7	94.4	-21.7	83.3	90.9	-7.6	57.1	50	60	95.5
% High GPS Test	50	61.5	-11.5	0	72.7	-72.7	36.4	66.7	-30.3	61.1	45.5	15.6	0	0	0	72.7
Scaled Score GPS	109.7	111.5	-1.8	104.7	112.1	-7.4	108.6	111.6	-3	111.5	109	2.5	103.7	106	103.2	112.4
<b>% at least Expected Reading, Writing &amp; Maths</b>	75	76.9	-1.9	42.9	86.4	-43.5	63.6	83.3	-19.7	77.8	72.7	5.1	28.6	0	40	90.9
% Higher Standard Reading, Writing & Maths	6.2	7.7	-1.5	0	9.1	-9.1	0	11.1	-11.1	0	18.2	-18.2	0	0	0	9.1
Progress Reading	4.13	4.99	-0.86	4.72	4.48	0.24	3.78	4.92	-1.14	4.73	4.25	0.48	8.87	8.22	9	3.22
Progress Writing	-0.19	-0.11	-0.08	-2.56	0.42	-2.98	-2.04	0.85	-2.89	-0.63	0.49	-1.12	-0.38	-2.02	-0.06	-0.09
Progress Maths	3.2	3.27	-0.07	3.3	3.21	0.09	4.14	2.75	1.39	4.91	0.94	3.97	4.55	4.19	4.62	2.84

The graphs to the right compare the percentage of children achieving at least the expected standard in Reading, Writing & Maths by the pupil groups directly above.

Horizontal Lines represent National.





# Key stage 2 Group Performance 2023 (Provisional)

## Birmingham

	Gender			Free School Meals			Disadvantaged			Language			Special Educational Needs			
	Boys	Girls	Gap	Yes	No	Gap	Yes	No	Gap	EAL	Non	Gap	All SEN	ECHP	Support	Non
Eligible pupils	8611	8127		7342	9396		8122	8616		7540	9056		3616	676	2940	13037
<b>% at least Expected Reading Test</b>	67.1	72.5	-5.4	63	75	-12	63.4	75.7	-12.3	67	72.2	-5.2	34.6	10.5	40.1	79.6
% High standard Reading Test	25.7	28.3	-2.6	20.1	32.4	-12.3	20.6	33	-12.4	24.1	29.5	-5.4	8	2.5	9.2	32.3
Scaled Score Reading	104.1	104.9	-0.8	103	105.6	-2.6	103.1	105.8	-2.7	103.8	105.1	-1.3	98.1	96.5	98.2	106
<b>% at least Expected Writing TA</b>	62.9	76.3	-13.4	62.2	75	-12.8	62.6	75.8	-13.2	68.9	70.2	-1.3	26.6	8	30.9	81.5
% Greater Depth Writing TA	7.9	12.7	-4.8	6.8	12.9	-6.1	7	13.3	-6.3	9.3	11.1	-1.8	1.8	0.7	2	12.6
<b>% at least Expected Maths Test</b>	72.5	72.9	-0.4	64.3	79.3	-15	65	80	-15	75.2	70.9	4.3	34.2	8.7	40.1	83.6
% High Maths Test	27.2	22.7	4.5	17.7	30.7	-13	18.2	31.4	-13.2	28.2	22.6	5.6	6.9	1.5	8.2	30.1
Scaled Score Maths	104.8	103.9	0.9	102.5	105.7	-3.2	102.5	106	-3.5	104.9	103.9	1	97.3	94.4	97.5	106
% at least Expected GPS Test	69.7	77.8	-8.1	66.1	79.5	-13.4	66.5	80.3	-13.8	74.5	73.2	1.3	34.3	11	39.6	84.7
% High GPS Test	30.4	38.5	-8.1	26.8	40.3	-13.5	27	41.3	-14.3	36.5	32.7	3.8	8.6	3.2	9.8	41.7
Scaled Score GPS	104.8	106.4	-1.6	103.8	106.9	-3.1	103.9	107.1	-3.2	105.8	105.4	0.4	97.9	96.3	98	107.4
<b>% at least Expected Reading, Writing &amp; Maths</b>	<b>54</b>	<b>61.8</b>	<b>-7.8</b>	<b>48.9</b>	<b>64.7</b>	<b>-15.8</b>	<b>49.5</b>	<b>65.6</b>	<b>-16.1</b>	<b>57.6</b>	<b>58.2</b>	<b>-0.6</b>	<b>18.4</b>	<b>4.8</b>	<b>21.5</b>	<b>68.9</b>
% Higher Standard Reading, Writing & Maths	5.7	7.9	-2.2	4.2	8.8	-4.6	4.3	9.1	-4.8	6.4	7.2	-0.8	1	0.3	1.2	8.4
Progress Reading	0.19	0.16	0.03	-0.23	0.5	-0.73	-0.26	0.6	-0.86	0.35	0.05	0.3	-1.2	-4.26	-0.58	0.57
Progress Writing	-0.49	0.69	-1.18	-0.21	0.31	-0.52	-0.24	0.39	-0.63	0.65	-0.34	0.99	-1.83	-4.13	-1.35	0.64
Progress Maths	1.57	-0.22	1.79	-0.08	1.32	-1.4	-0.06	1.43	-1.49	1.97	-0.24	2.21	-1.04	-4.36	-0.35	1.2

## National

	Gender			Free School Meals			Disadvantaged			Language			Special Educational Needs			
	Boys	Girls	Gap	Yes	No	Gap	Yes	No	Gap	EAL	Non	Gap	All SEN	ECHP	Support	Non
Eligible pupils	344055	329309		183825	489539		203860	469504		148151	521001		137164	32127	105037	532720
<b>% at least Expected Reading Test</b>	69.9	75.5	-5.6	59.4	77.6	-18.2	60	78.1	-18.1	69.4	73.8	-4.4	38.5	18.2	44.8	81.7
% High standard Reading Test	26.8	31.3	-4.5	17	33.5	-16.5	17.4	34	-16.6	26.1	29.9	-3.8	10.1	4.9	11.7	34
Scaled Score Reading	104.6	105.6	-1	102.3	106.1	-3.8	102.4	106.2	-3.8	104.4	105.3	-0.9	99.2	97.7	99.4	106.4
<b>% at least Expected Writing TA</b>	65.1	78.1	-13	57.5	76.7	-19.2	58	77.3	-19.3	71.4	71.8	-0.4	28.9	12.1	33.9	82.6
% Greater Depth Writing TA	10.1	16.6	-6.5	6.4	15.9	-9.5	6.6	16.2	-9.6	13.6	13.3	0.3	2.6	1.1	3	16.1
<b>% at least Expected Maths Test</b>	73.5	72.3	1.2	58.3	78.4	-20.1	58.8	79.1	-20.3	77.1	72	5.1	36.3	16.4	42.3	82.6
% High Maths Test	26.7	20.8	5.9	12.6	28.1	-15.5	12.8	28.6	-15.8	30.5	22	8.5	6.5	3.4	7.5	28.4
Scaled Score Maths	104.7	103.7	1	101.2	105.3	-4.1	101.3	105.4	-4.1	105.5	103.9	1.6	97.8	96	98.1	105.6
% at least Expected GPS Test	68.3	76.5	-8.2	58.3	77.6	-19.3	58.8	78.1	-19.3	74.9	71.8	3.1	32.7	16.2	37.8	82.7
% High GPS Test	26.8	33.4	-6.6	18.1	34.6	-16.5	18.5	35.1	-16.6	36.1	28.5	7.6	7.8	4.2	8.9	35.9
Scaled Score GPS	104.1	105.7	-1.6	101.9	106	-4.1	102.1	106.1	-4	106	104.6	1.4	97.7	96.4	97.9	106.5
<b>% at least Expected Reading, Writing &amp; Maths</b>	<b>56.2</b>	<b>62.9</b>	<b>-6.7</b>	<b>43.3</b>	<b>65.5</b>	<b>-22.2</b>	<b>43.9</b>	<b>66.2</b>	<b>-22.3</b>	<b>60.3</b>	<b>59.5</b>	<b>0.8</b>	<b>20</b>	<b>8.4</b>	<b>23.5</b>	<b>69.8</b>
% Higher Standard Reading, Writing & Maths	6.9	9	-2.1	3	9.8	-6.8	3.2	10	-6.8	8.8	7.8	1	1.3	0.5	1.5	9.7
Progress Reading	np	np		np	np		np	np		np	np		np	np	np	np
Progress Writing	np	np		np	np		np	np		np	np		np	np	np	np
Progress Maths	np	np		np	np		np	np		np	np		np	np	np	np

## Notes on this report

School outcomes represent the attainment of pupils at the indicated school or academy or the previous establishment where appropriate

Ward and District outcomes represent the combined attainment of children living within the indicated area and who attend a school in Birmingham according to the January school census for 2023

Birmingham outcomes represent the combined attainment for all schools in Birmingham with the exception of Pupil Referral Units and Hospital schools

National figures are primarily sourced from corresponding statistics released by the DfE on [www.gov.uk](http://www.gov.uk), with ASP and performance tables acting as secondary sources

Red, Amber, White and Green indicators used in this document are an LA interpretation and not directly comparable to Ofsted measures, use for REFERENCE only.

RAG rating relates to the National outcome. If National outcome is not available then the Birmingham outcome is supplemented.

	RAG Key		
	Green	Amber	Red
EYFSP attainment	0.5	-4	-10
EYFSP ELG	0.25	-1	-2
KS2 attainment	0.5	-4	-10
KS2 scaled scores	0.5	-3	-5
KS2 progress	0.01	-0.5	-1.5
Phonics attainment	0.5	-4	-10
KS1 attainment	0.5	-4	-10

### Trend Explained

**% Diff** - Compares current year to previous year by % of pupils achieving

**Pupils** - The difference in current year from previous by number of pupils achieving

**Average** - Represents a 3 year rolling average for the indicated measure

### Comparison Explained (relates to current year only)

**% Diff** - Compares school/academy to indicated benchmark by % of pupils achieving

**Pupils** - Represents the % Diff in pupil numbers e.g. -2 would mean you are were 2 children away from achieving the average for the benchmark.

**Above** - Shows how many times you were above the average outcome for the indicated

## National Outcomes

Wherever possible national outcomes are taken from the official statistics published by the DfE. Note that they may change throughout the year if replaced by revised outcomes.

On occasion it may be necessary to take national outcomes from other reliable sources such as Performance Tables or ASP

The code outcome code **np** means that the figure has not been published - wherever possible this will be replaced with national outcomes if available as and when published

**For further information regarding national and regional school attainment access the following link:**

<https://www.gov.uk/government/organisations/department-for-education/about/statistics>

**For further information regarding school attainment in Birmingham access the following link:**

[https://www.birmingham.gov.uk/info/20113/policies\\_and\\_strategies/1076/education\\_performance\\_and\\_statistics](https://www.birmingham.gov.uk/info/20113/policies_and_strategies/1076/education_performance_and_statistics)

**If you have a query regarding this report then please contact us using the email address below**

[educationdata@birmingham.gov.uk](mailto:educationdata@birmingham.gov.uk)