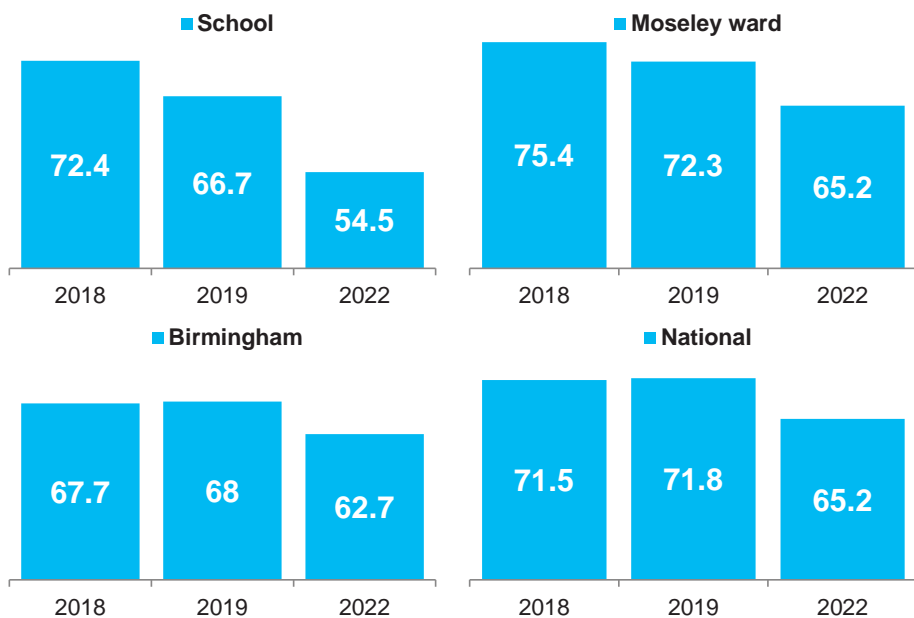


Early Years Foundation Stage Profile

	School			Moseley ward			Hall Green			Birmingham			National		
	2018	2019	2022	2018	2019	2022	2018	2019	2022	2018	2019	2022	2018	2019	2022
Number of eligible children	29	30	22	232	231	201	1771	1777	1635	16177	15765	15089	652400	638995	622583
% achieving GLD	72.4	66.7	54.5	75.4	72.3	65.2	66.9	67.9	61.3	67.7	68	62.7	71.5	71.8	65.2
% at least expected level across all early learning goals	72.4	66.7	54.5	74.6	71.9	64.7	65.2	66	60.1	65.9	66.2	60.7	70.2	70.7	63.4
% at least expected across all prime areas of learning	79.3	70	63.6	81	77.1	72.6	73.7	72.6	68.9	75.1	74.7	71.1	79.4	79.2	74.2
% at least expected across all specific areas of learning	75.9	66.7	54.5	76.7	71.9	64.7	66	66.7	61.4	66.5	66.8	61.7	70.9	71.4	64.9
average points score	34.4	33.5	30.5	35.2	34.6	29.4	32.8	32.8	29.8	33.2	33.2	30.1	34.6	34.6	np
Average number of ELG achieved	15.2	14.5	13.5	15	14.3	13.9	13.6	13.5	13.2	13.9	13.7	13.4	np	np	14.1
% achieving Communication and Language	86.2	76.7	63.6	84.9	81.4	77.6	75.9	75.6	73	77.9	77.2	75.4	82.4	82.2	79.5
% achieving Physical Development	86.2	83.3	77.3	91.8	84	86.1	83.2	80.6	81	83.9	82.8	82.5	87.4	87.1	84.9
% achieving Personal, Social and Emotional Development	86.2	80	90.9	87.9	84	83.1	80.2	78.9	80.2	81.5	80.7	80.6	85.2	84.8	83
% achieving Literacy	75.9	66.7	54.5	78	72.3	67.2	68.7	69.1	64.3	69.6	69.4	65.1	73.3	73.4	68
% achieving Mathematics	82.8	73.3	68.2	82.3	76.2	73.6	72.6	72.7	71.3	73.1	73.2	70.9	78.3	78.5	75.9
% achieving Understanding the World	89.7	80	86.4	87.5	82.3	79.1	75.9	76.2	73.8	78.4	78.1	74.4	84	83.9	79.6
% achieving Expressive arts and design	89.7	93.3	72.7	90.5	86.1	80.6	80.5	80.2	78.5	82.1	81.9	79.2	87.2	87.2	84.5

Three year attainment trend for GLD



Attainment difference of school to indicated group for GLD

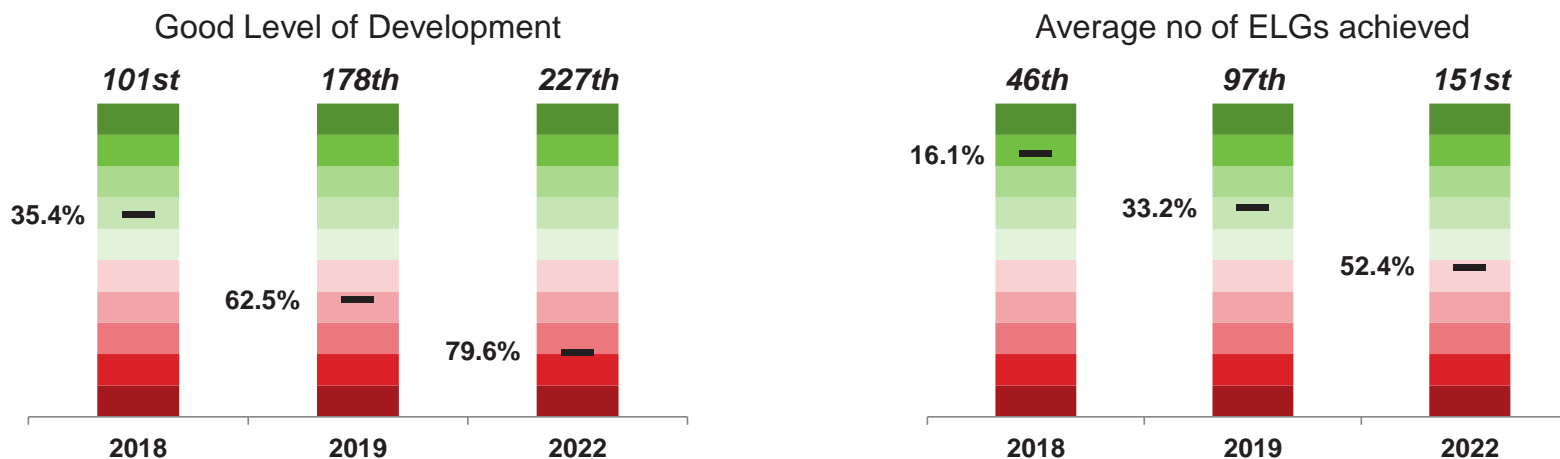


St John and Monica Catholic Primary School

	Trend			Comparison to Setting											
	School Attainment			Moseley ward			Hall Green			Birmingham			National		
	% Diff	Pupils	Average	% Diff	Pupils	Above	% Diff	Pupils	Above	% Diff	Pupils	Above	% Diff	Pupils	Above
<i>In 2022 this setting had 22 pupils at the end of EY</i>															
% achieving GLD	-12.2	-3	65.4	-10.7	-2	0	-6.8	-1	1	-8.2	-2	1	-10.7	-2	1
% at least expected level across all early learning goals	-12.2	-3	65.4	-10.2	-2	0	-5.6	-1	2	-6.2	-1	2	-8.9	-2	1
% at least expected across all prime areas of learning	-6.4	-1	71.6	-9	-2	0	-5.3	-1	1	-7.5	-2	1	-10.6	-2	0
% at least expected across all specific areas of learning	-12.2	-3	66.7	-10.2	-2	0	-6.9	-2	1	-7.2	-2	1	-10.4	-2	1
Average number of ELG achieved	-1		14.5	-0.4		2	0.3		3	0.1		3	-0.6		0
% achieving Communication and Language	-13.1	-3	76.5	-14	-3	1	-9.4	-2	2	-11.8	-3	1	-15.9	-3	1
% achieving Physical Development	-6	-1	82.7	-8.8	-2	0	-3.7	-1	2	-5.2	-1	2	-7.6	-2	0
% achieving Personal, Social and Emotional Development	10.9	2	85.2	7.8	2	1	10.7	2	3	10.3	2	2	7.9	2	2
% achieving Literacy	-12.2	-3	66.7	-12.7	-3	0	-9.8	-2	1	-10.6	-2	1	-13.5	-3	1
% achieving Mathematics	-5.1	-1	75.3	-5.4	-1	1	-3.1	-1	2	-2.7	-1	2	-7.7	-2	1
% achieving Understanding the World	6.4	1	85.2	7.3	2	2	12.6	3	3	12	3	3	6.8	1	2
% achieving Expressive arts and design	-20.6	-5	86.4	-7.9	-2	1	-5.8	-1	2	-6.5	-1	2	-11.8	-3	2

Note: above graded colour scale based on displayed figures only, it is intended only to help quickly identify areas of strengths and weaknesses

Percentile and Ranking Trends



Schools and academies are ranked purely on the basis of the attainment measure being displayed, with 1st being the highest achieving out of 0 in Birmingham
The percentile is calculated using normalised score of 1 - 100 and represents the percentage of schools in Birmingham achieving a higher outcome.

Trend Explained

% Diff - Compares current year to previous year by % of pupils achieving
Pupils - The difference in current year from previous by number of pupils achieving
Average - Represents a 3 year rolling average for the indicated measure

Comparison Explained (relates to current year only)

% Diff - Compares school/academy to indicated benchmark by % of pupils achieving
Pupils - Represents the % Diff in pupil numbers e.g. -2 would mean you are were 2 children away from achieving the average for the benchmark.
Above - Shows how many times you were above the average outcome for the indicated benchmark

St John and Monica Catholic Primary School

	Gender			Free School Meals			Disadvantaged			Language			Special Educational Needs			
	Boys	Girls	Gap	Yes	No	Gap	Yes	No	Gap	EAL	Non	Gap	All SEN	ECHP	Support	Non
Eligible pupils	13	9		8	14		-	-		12	9		2	-	2	19
% GLD	46.2	66.7	-20.5	50	57.1	-7.1	-	-		50	66.7	-16.7	0	-	0	63.2
% All early learning Goals	46.2	66.7	-20.5	50	57.1	-7.1	-	-		50	66.7	-16.7	0	-	0	63.2
% Prime learning goals	46.2	88.9	-42.7	75	57.1	17.9	-	-		66.7	66.7	0	0	-	0	73.7
% Specific learning goals	46.2	66.7	-20.5	50	57.1	-7.1	-	-		50	66.7	-16.7	0	-	0	63.2
Average number of ELG achieved	12.2	15.4	-3.2	15.1	12.6	2.5	-	-		13.8	14.2	-0.4	8	-	8	14.6
% Communication and Language	46.2	88.9	-42.7	75	57.1	17.9	-	-		66.7	66.7	0	0	-	0	73.7
% Physical Development	61.5	100	-38.5	87.5	71.4	16.1	-	-		75	88.9	-13.9	50	-	50	84.2
% Personal, Social and Emotional Development	84.6	100	-15.4	100	85.7	14.3	-	-		91.7	88.9	2.8	50	-	50	94.7
% Literacy	46.2	66.7	-20.5	50	57.1	-7.1	-	-		50	66.7	-16.7	0	-	0	63.2
% Mathematics	69.2	66.7	2.5	75	64.3	10.7	-	-		66.7	77.8	-11.1	50	-	50	73.7
% Understanding the World	76.9	100	-23.1	100	78.6	21.4	-	-		91.7	88.9	2.8	50	-	50	94.7
% Expressive arts and design	53.8	100	-46.2	87.5	64.3	23.2	-	-		66.7	88.9	-22.2	0	-	0	84.2

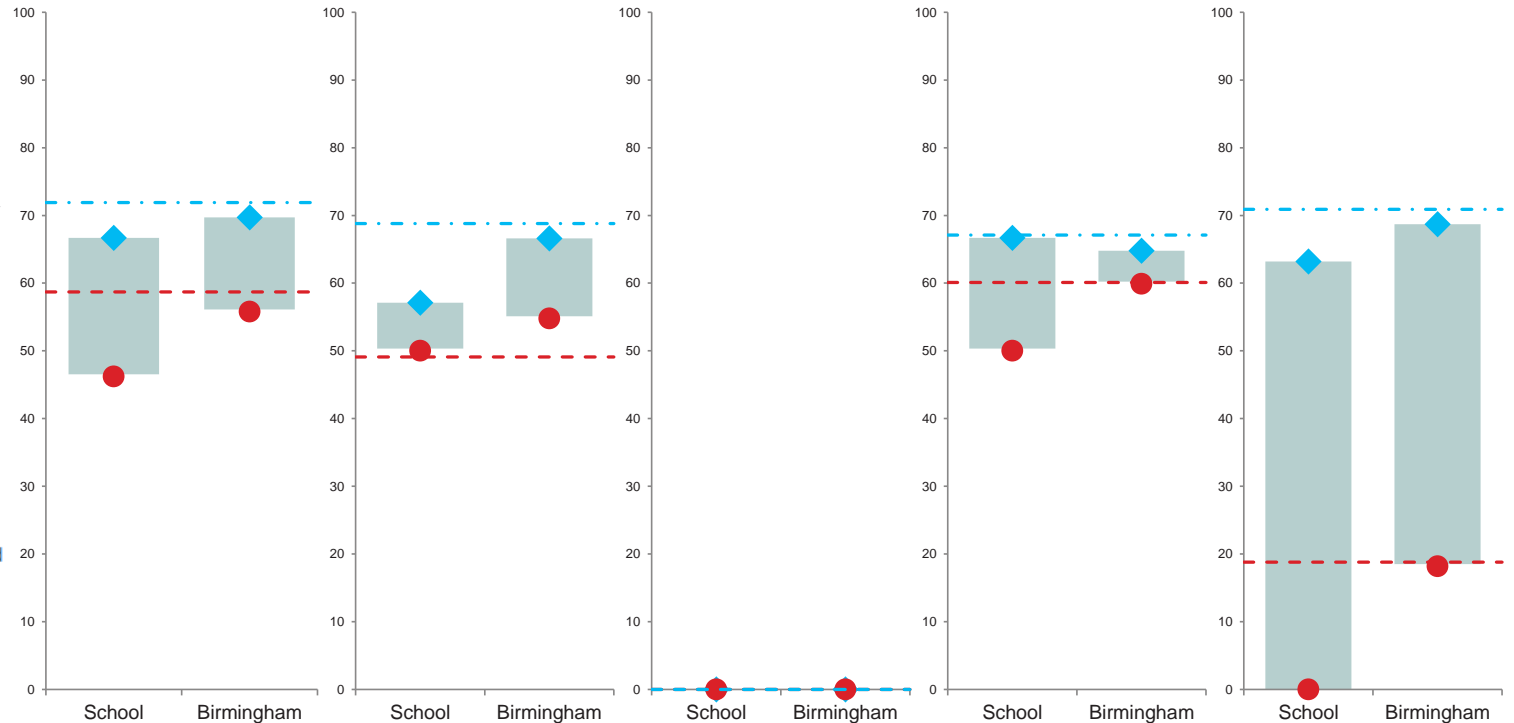
The graphs to the right compare the percentage of children achieving a 'Good Level of Development' (GLD) by the pupil groups directly above.

The blue diamond represents the *nationally* higher achieving of the two corresponding groups, where as the red circle is the *nationally* lower achieving. The grey box inbetween the two markers represents the achievement gap.

The horizontal lines represent the same measures but for national outcomes.

Legend

- Gender
 - ◆ Girls
 - Boys
- Free School Meals
 - ◆ non FSM
 - FSM
- Disadvantaged
 - ◆ non Disadvantaged
 - Disadvantaged
- Language
 - ◆ non EAL
 - EAL
- SEN
 - ◆ No identified SEN
 - SEN



Early Years Foundation Stage Profile Pupil Group Performance 2022

Birmingham

	Gender			Free School Meals			Disadvantaged			Language			Special Educational Needs			
	Boys	Girls	Gap	Yes	No	Gap	Yes	No	Gap	EAL	Non	Gap	All SEN	ECHP	Support	Non
Eligible pupils	7630	7459		4993	10096		-	-		6003	8807		1717	223	1494	13181
% GLD	55.8	69.7	-13.9	54.8	66.6	-11.8	-	-		59.9	64.8	-4.9	18.2	0.4	20.8	68.7
% All early learning Goals	53.5	68	-14.5	52.6	64.6	-12	-	-		57.5	63.1	-5.6	17.2	0.4	19.7	66.5
% Prime learning goals	63.4	79	-15.6	64.9	74.2	-9.3	-	-		67.3	74.1	-6.8	22.1	0.4	25.3	77.7
% Specific learning goals	54.7	68.9	-14.2	53.6	65.7	-12.1	-	-		58.1	64.3	-6.2	18.5	0.4	21.2	67.5
Average number of ELG achieved	12.4	14.3	-1.9	12.5	13.8	-1.3	-	-		12.7	13.8	-1.1	6.1	0.9	6.9	14.3
% Communication and Language	69.3	81.6	-12.3	70.2	78	-7.8	-	-		70.1	79.2	-9.1	27.3	2.2	31	81.8
% Physical Development	75.7	89.5	-13.8	77.9	84.8	-6.9	-	-		81.4	83.4	-2	38.3	3.6	43.5	88.3
% Personal, Social and Emotional Development	74.6	86.8	-12.2	76.3	82.8	-6.5	-	-		78.6	82.4	-3.8	33.7	2.7	38.3	87
% Literacy	58.4	71.9	-13.5	57.1	69.1	-12	-	-		62.1	67.4	-5.3	21.7	0.9	24.8	70.9
% Mathematics	66.5	75.5	-9	63.6	74.6	-11	-	-		67.8	73.3	-5.5	29.6	4	33.5	76.5
% Understanding the World	68.9	80	-11.1	68.6	77.3	-8.7	-	-		68	78.9	-10.9	28.9	2.2	32.9	80.4
% Expressive arts and design	71.4	87.1	-15.7	74.8	81.3	-6.5	-	-		74.3	82.7	-8.4	37.1	5.4	41.8	84.7

National

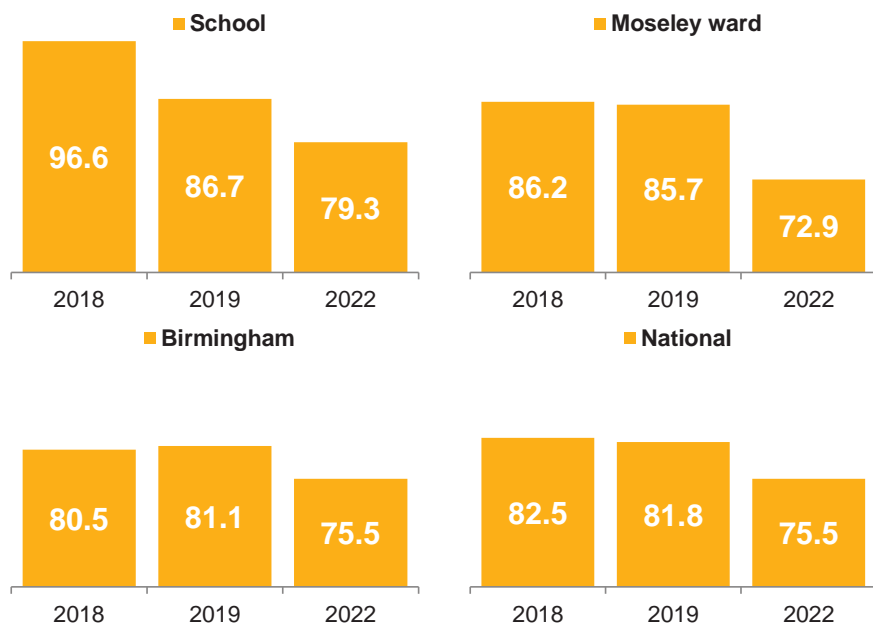
	Gender			Free School Meals			Disadvantaged			Language			Special Educational Needs			
	Boys	Girls	Gap	Yes	No	Gap	Yes	No	Gap	EAL	Non	Gap	All SEN	ECHP	Support	Non
Eligible pupils	318249	304334		113882	508701		np	np		121530	484926		63259	13630	49629	552523
% GLD	58.7	71.9	-13.2	49.1	68.8	-19.7	np	np		60.1	67.1	-7	18.8	3.6	22.9	70.9
% All early learning Goals	56.5	70.6	-14.1	47.1	67	-19.9	np	np		57.2	65.5	-8.3	17.7	3.4	21.6	69.1
% Prime learning goals	66.9	81.8	-14.9	61.3	77.1	-15.8	np	np		67.6	76.4	-8.8	23.1	4.4	28.2	80.5
% Specific learning goals	58.4	71.6	-13.2	48.3	68.6	-20.3	np	np		58.2	67.1	-8.9	20.5	4.7	24.9	70.4
Average number of ELG achieved	13.3	14.8	-1.5	12.3	14.4	-2.1	np	np		13.1	14.4	-1.3	7	2.4	8.3	14.9
% Communication and Language	74.3	85	-10.7	68.6	82	-13.4	np	np		70.5	82.3	-11.8	30.9	8.3	37.1	85.5
% Physical Development	78.4	91.6	-13.2	75.7	86.9	-11.2	np	np		83.7	85.4	-1.7	42.3	13.4	50.3	90
% Personal, Social and Emotional Development	77.2	89.1	-11.9	73.7	85.1	-11.4	np	np		79.9	84.2	-4.3	34.9	8.6	42.2	88.8
% Literacy	62	74.3	-12.3	51.7	71.7	-20	np	np		62.5	70	-7.5	23.8	6.5	28.5	73.6
% Mathematics	73.3	78.6	-5.3	61.2	79.2	-18	np	np		70.2	77.8	-7.6	36.7	13.5	43	80.8
% Understanding the World	75.4	84	-8.6	67.4	82.4	-15	np	np		69.1	82.8	-13.7	35.1	9.5	42.1	85.2
% Expressive arts and design	78.1	91.2	-13.1	75.6	86.5	-10.9	np	np		78	86.6	-8.6	43	13.4	51.1	89.7

Disadvantaged outcomes are not included for EYFSP as they are not published nationally, however in the majority of cases outcomes will be the same as the ones for free school meals

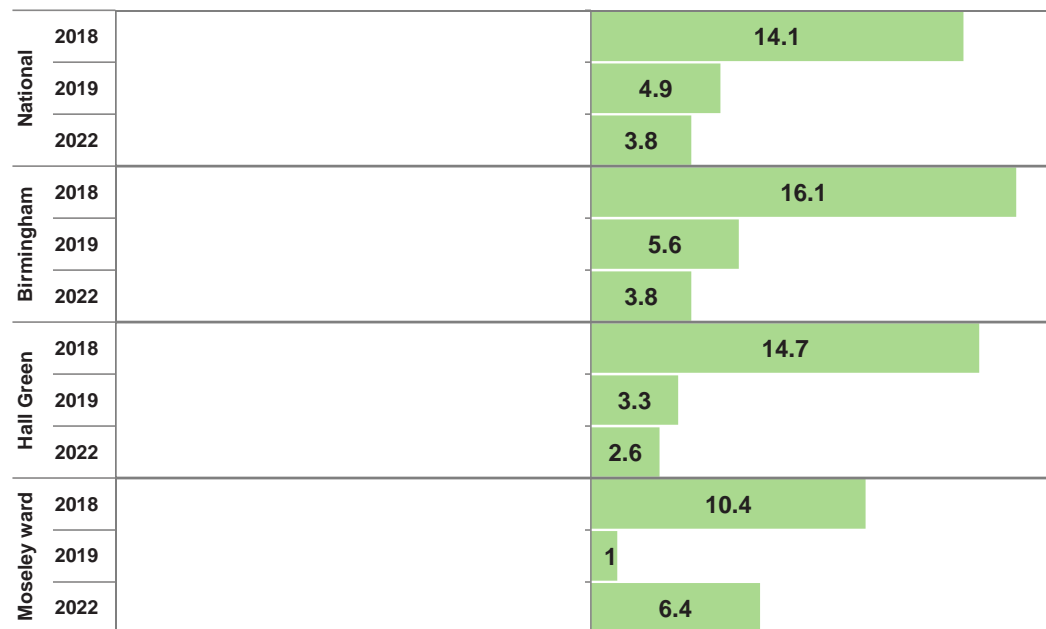
Phonics

	School			Moseley ward			Hall Green			Birmingham			National		
	2018	2019	2022	2018	2019	2022	2018	2019	2022	2018	2019	2022	2018	2019	2022
Year 1 Eligible pupils	29	30	29	246	231	207	1820	1751	1643	16584	16239	15662	664499	649152	636787
% Absent	0	0	0	0.4	0.4	1	0.2	0.2	0.7	0.3	0.3	0.5	np	np	np
% Disapplied	0	0	0	2.8	0.9	3.4	2.6	1.1	3.1	2.3	2.1	2.9	np	np	np
% Working Towards	3.4	13.3	20.7	10.6	13	22.7	15.2	15.3	19.4	16.9	16.6	21.1	np	np	np
% Working At	96.6	86.7	79.3	86.2	85.7	72.9	81.9	83.4	76.7	80.5	81.1	75.5	82.5	81.8	75.5
Eligible pupils at end of Key Stage 1	30	30	30	256	242	215	1873	1796	1648	16733	16585	15533	664100	665493	637861
% Absent	0	0	0	0.4	0	1.4	0.5	0	0.5	0.7	0.1	0.3	np	np	np
% Disapplied	0	0	0	1.6	0.4	3.3	1.5	0.7	2.5	1.5	1.4	2.7	np	np	np
% Working Towards	13.3	3.3	10	5.5	5	6	6.5	7.9	8.9	7.6	8.4	10.5	np	np	np
% Working At	86.7	96.7	90	92.6	94.6	89.3	91.5	91.4	88	90.3	90.2	86.5	91.8	91.4	86.9

Reaching the expected standard of Phonics decoding in Y1



Attainment difference of school to indicated group Y1 Phonics



St John and Monica Catholic Primary School

In 2022 this setting had 29 pupils at the end of Y1

Year 1 Eligible pupils

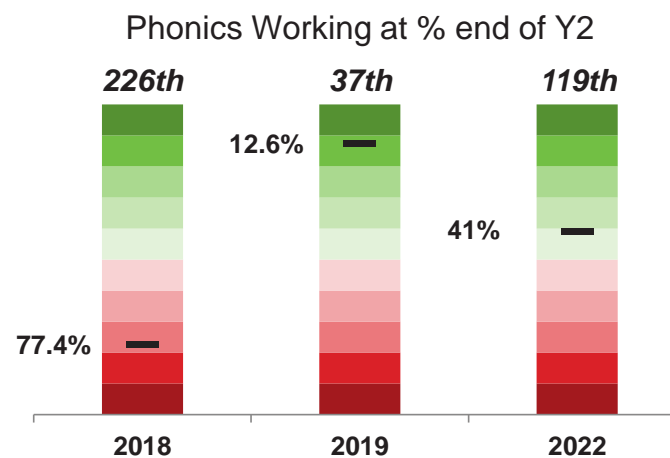
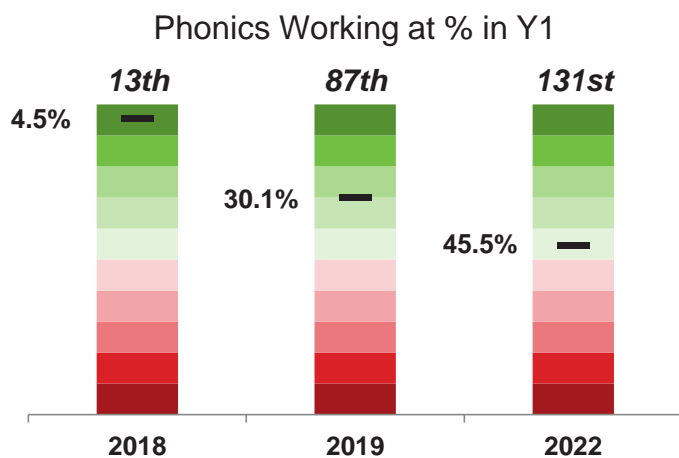
	Trend			Comparison to Setting											
	School Attainment			Moseley ward			Hall Green			Birmingham			National		
	% Diff	Pupils	Average	% Diff	Pupils	Above	% Diff	Pupils	Above	% Diff	Pupils	Above	% Diff	Pupils	Above
% Absent	0	0	0	-1	0	0	-0.7	0	0	-0.5	0	0			
% Disapplied	0	0	0	-3.4	-1	0	-3.1	-1	0	-2.9	-1	0			
% Working Towards	7.4	2	12.5	-2	-1	1	1.3	0	1	-0.4	0	0			
% Working At	-7.4	-2	87.5	6.4	2	3	2.6	1	3	3.8	1	3	3.8	1	3

Eligible pupils at end of Key Stage 1

	% Diff	Pupils	Average	% Diff	Pupils	Above	% Diff	Pupils	Above	% Diff	Pupils	Above	% Diff	Pupils	Above
% Absent	0	0	0	-1.4	0	0	-0.5	0	0	-0.3	0	0			
% Disapplied	0	0	0	-3.3	-1	0	-2.5	-1	0	-2.7	-1	0			
% Working Towards	6.7	2	8.9	4	1	2	1.1	0	2	-0.5	0	1			
% Working At	-6.7	-2	91.1	0.7	0	2	2	1	2	3.5	1	2	3.1	1	2

Note: above graded colour scale based on displayed figures only, it is intended only to help quickly identify areas of strengths and weaknesses

Percentile and Ranking Trends



Schools and academies are ranked purely on the basis of the attainment measure being displayed, with 1st being the highest achieving out of 0 in Birmingham. The percentile is calculated using normalised score of 1 - 100 and represents the percentage of schools in Birmingham achieving a higher outcome.

Trend Explained

% Diff - Compares current year to previous year by % of pupils achieving
Pupils - The difference in current year from previous by number of pupils achieving
Average - Represents a 3 year rolling average for the indicated measure

Comparison Explained (relates to current year only)

% Diff - Compares school/academy to indicated benchmark by % of pupils achieving
Pupils - Represents the % Diff in pupil numbers e.g. -2 would mean you are were 2 children away from achieving the average for the benchmark.
Above - Shows how many times you were above the average outcome for the indicated benchmark

Phonics Pupil Group Performance 2022

St John and Monica Catholic Primary School

	Gender			Free School Meals			Disadvantaged			Language			Special Educational Needs			
	Boys	Girls	Gap	Yes	No	Gap	Yes	No	Gap	EAL	Non	Gap	All SEN	ECHP	Support	Non
Year 1 Eligible pupils	16	13		4	25		4	25		21	8		4	-	4	25
% Absent	0	0	0	0	0	0	0	0	0	0	0	0	0	-	0	0
% Disapplied	0	0	0	0	0	0	0	0	0	0	0	0	0	-	0	0
% Working Towards	18.8	23.1	-4.3	50	16	34	50	16	34	14.3	37.5	-23.2	50	-	50	16
% Working At	81.2	76.9	4.3	50	84	-34	50	84	-34	85.7	62.5	23.2	50	-	50	84
Eligible pupils at end of Key Stage 1	17	13		7	23		7	23		18	12		5	1	4	25
% Absent	0	0	0	0	0	0	0	0	0	0	0	0	0	0	0	0
% Disapplied	0	0	0	0	0	0	0	0	0	0	0	0	0	0	0	0
% Working Towards	5.9	15.4	-9.5	0	13	-13	0	13	-13	11.1	8.3	2.8	40	100	25	4
% Working At	94.1	84.6	9.5	100	87	13	100	87	13	88.9	91.7	-2.8	60	0	75	96

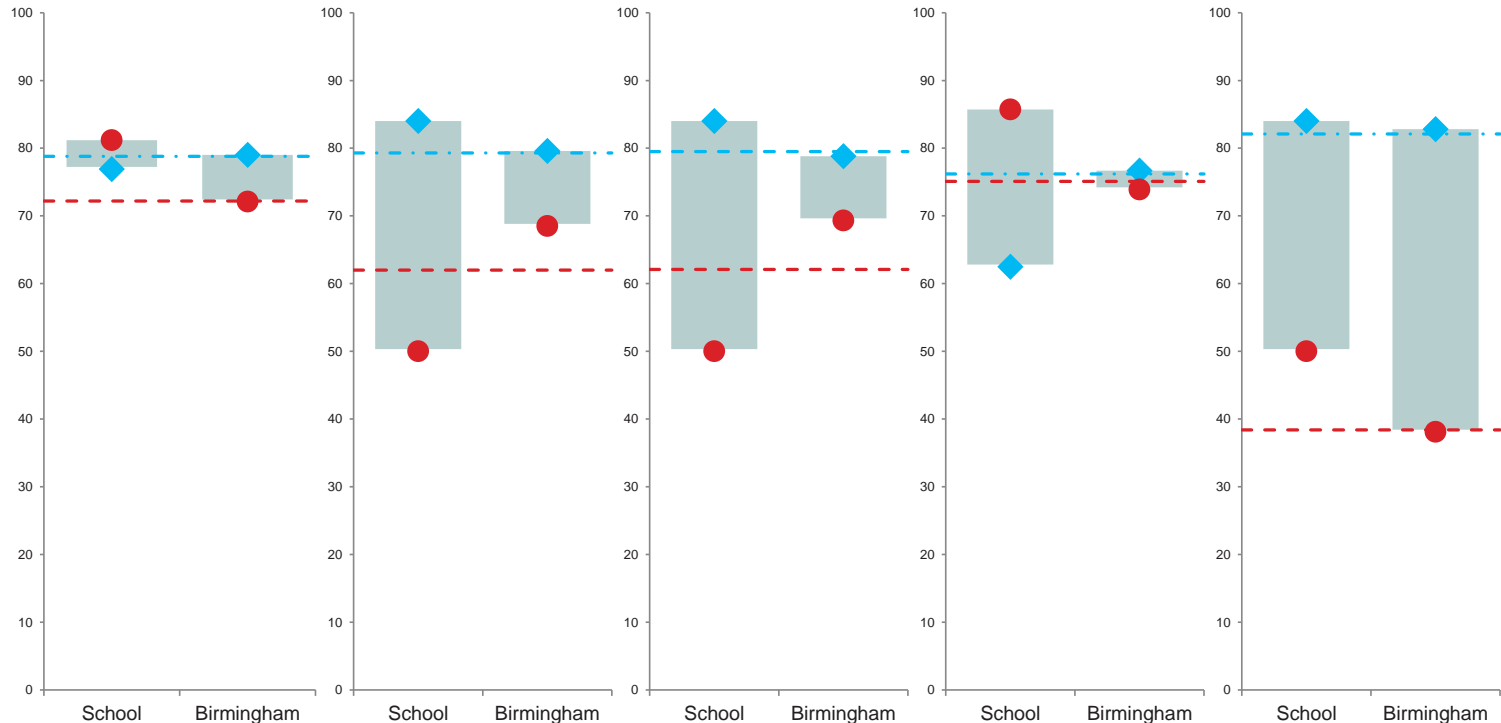
The graphs to the right compare the percentage of children working at the expected level of Phonics decoding in Year 1 by the pupil groups directly above.

The blue diamond represents the *nationally* higher achieving of the two corresponding groups, where as the red circle is the *nationally* lower achieving. The grey box inbetween the two markers represents the achievement gap.

The horizontal lines represent the same measures but for national outcomes.

Legend

- Gender
 - ◆ Girls
 - Boys
- Free School Meals
 - ◆ non FSM
 - FSM
- Disadvantaged
 - ◆ non Disadvantaged
 - Disadvantaged
- Language
 - ◆ non EAL
 - EAL
- SEN
 - ◆ No identified SEN
 - SEN



Phonics Pupil Group Performance 2022

Birmingham

	Gender			Free School Meals			Disadvantaged			Language			Special Educational Needs			
	Boys	Girls	Gap	Yes	No	Gap	Yes	No	Gap	EAL	Non	Gap	All SEN	ECHP	Support	Non
Year 1 Eligible pupils	8003	7659		5806	9856		5571	10091		6287	9310		2538	366	2172	13099
% Absent	0.6	0.4	0.2	0.5	0.5	0	0.4	0.5	-0.1	0.7	0.4	0.3	0.7	1.9	0.5	0.5
% Disapplied	4	1.8	2.2	3.4	2.7	0.7	3.4	2.7	0.7	3.2	2.6	0.6	15	64.8	6.6	0.5
% Working Towards	23.3	18.8	4.5	27.6	17.3	10.3	26.9	17.9	9	22.2	20.4	1.8	46.2	24.6	49.9	16.2
% Working At	72.1	79	-6.9	68.5	79.6	-11.1	69.3	78.8	-9.5	73.9	76.7	-2.8	38.1	8.7	43	82.8
Eligible pupils at end of Key Stage 1	7935	7598		6274	9259		6186	9347		6576	8896		2867	468	2399	12659
% Absent	0.3	0.2	0.1	0.3	0.2	0.1	0.3	0.2	0.1	0.3	0.2	0.1	0.5	0.6	0.5	0.2
% Disapplied	3.9	1.5	2.4	3.2	2.4	0.8	3.2	2.4	0.8	2.8	2.6	0.2	13.3	65.2	3.2	0.3
% Working Towards	11.8	9.1	2.7	13.5	8.4	5.1	12.7	9	3.7	11.2	9.9	1.3	31.2	19.2	33.5	5.8
% Working At	84	89.2	-5.2	82.9	89	-6.1	83.8	88.4	-4.6	85.6	87.3	-1.7	55	15	62.8	93.7

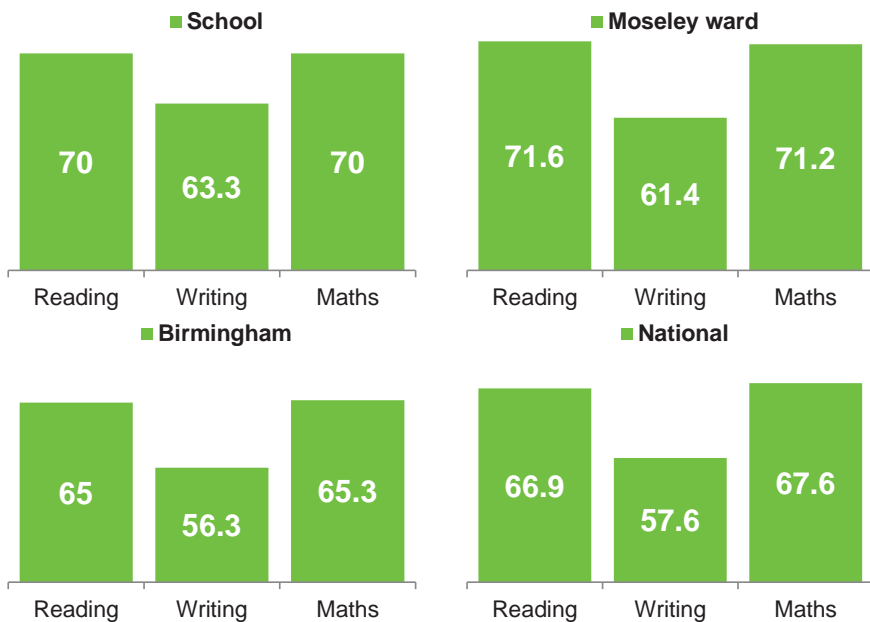
National

	Gender			Free School Meals			Disadvantaged			Language			Special Educational Needs			
	Boys	Girls	Gap	Yes	No	Gap	Yes	No	Gap	EAL	Non	Gap	All SEN	ECHP	Support	Non
Year 1 Eligible pupils	325791	310996		141338	495449		148233	488554		128180	500421		87950	18399	69551	542396
% Absent	np	np		np	np		np	np		np	np		np	np	np	np
% Disapplied	np	np		np	np		np	np		np	np		np	np	np	np
% Working Towards	np	np		np	np		np	np		np	np		np	np	np	np
% Working At	72.2	78.8	-6.6	62	79.3	-17.3	62.1	79.5	-17.4	75.1	76.2	-1.1	38.4	18.7	43.6	82.1
Eligible pupils at end of KS1	327216	310645		153222	484639		161027	476834		131457	500451		102716	20497	82219	530455
% Absent	np	np		np	np		np	np		np	np		np	np	np	np
% Disapplied	np	np		np	np		np	np		np	np		np	np	np	np
% Working Towards	np	np		np	np		np	np		np	np		np	np	np	np
% Working At	84.5	89.4	-4.9	77.7	89.8	-12.1	77.7	90	-12.3	86.2	87.6	-1.4	54.8	28.4	61.4	93.6

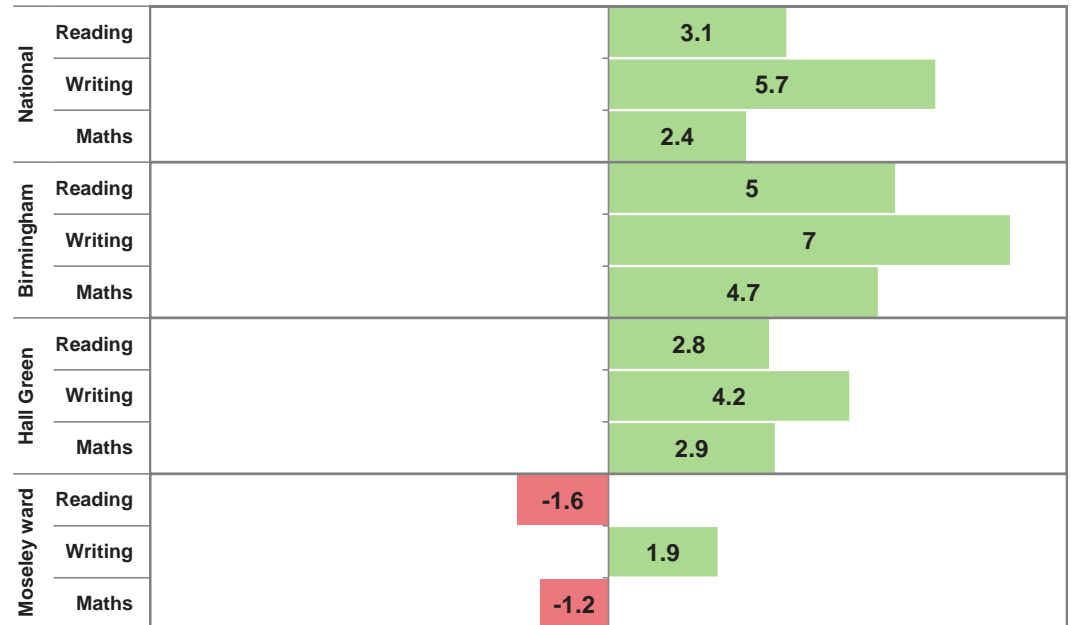
Key stage 1

	School			Moseley ward			Hall Green			Birmingham			National		
	2018	2019	2022	2018	2019	2022	2018	2019	2022	2018	2019	2022	2018	2019	2022
Eligible pupils	30	30	30	256	242	215	1873	1799	1651	16733	16631	15580	664979	666393	639415
% At least Expected Reading	73.3	83.3	70	77	78.5	71.6	73.2	73.9	67.2	72.6	72.1	65	75.4	74.9	66.9
% Greater Depth Reading	13.3	26.7	26.7	28.1	27.7	16.7	21.6	23.2	13.6	19.8	20.3	14	25.6	25	18
% At least Expected Writing	76.7	80	63.3	71.5	72.7	61.4	66.8	69.1	59.1	66.7	66.8	56.3	69.9	69.2	57.6
% Greater Depth Writing	13.3	13.3	16.7	16.8	18.6	8.4	13.2	15.5	6.4	12.1	12.1	5.9	15.9	14.8	8
% At least Expected Maths	83.3	76.7	70	76.2	82.2	71.2	75.1	75.4	67.1	72.8	73.3	65.3	76.1	75.6	67.6
% Greater Depth Maths	16.7	13.3	20	21.5	22.7	15.3	19.9	22.1	12.1	18	18.6	12.1	21.8	21.7	15.1
% Expected Science	86.7	86.7	73.3	78.5	83.1	79.1	77.2	79.5	75.5	76.9	77.4	71.5	82.8	82.3	77.1
% at least Expected Reading, Writing & Maths	73.3	73.3	60	66.4	68.6	56.3	62.8	65.5	54.8	62.1	62.7	51.9	65.3	64.9	53.5
% Greater Depth Reading, Writing & Maths	13.3	10	13.3	11.7	14	6.5	9.8	11.3	4.5	8.9	9.1	4.4	11.7	11.2	5.9

Reaching at least the expected standard current year



Attainment difference of school to indicated subject in current year



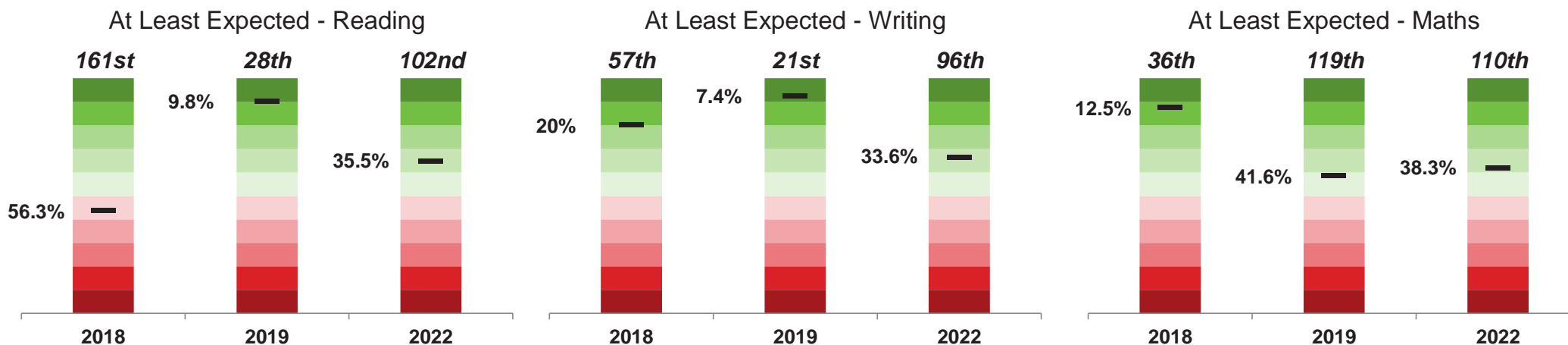
St John and Monica Catholic Primary School

In 2022 this setting had 30 pupils at the end of KS1

	Trend			Comparison to Setting											
	School Attainment			Moseley ward			Hall Green			Birmingham			National		
	% Diff	Pupils	Average	% Diff	Pupils	Above	% Diff	Pupils	Above	% Diff	Pupils	Above	% Diff	Pupils	Above
% At least Expected Reading	-13.3	-4	75.6	-1.6	0	1	2.8	1	3	5	2	3	3.1	1	2
% Greater Depth Reading	0	0	22.2	10	3	1	13.1	4	2	12.7	4	2	8.7	3	2
% At least Expected Writing	-16.7	-5	73.3	1.9	1	3	4.2	1	3	7	2	3	5.7	2	3
% Greater Depth Writing	3.4	1	14.4	8.3	2	1	10.3	3	2	10.8	3	3	8.7	3	1
% At least Expected Maths	-6.7	-2	76.7	-1.2	0	1	2.9	1	3	4.7	1	3	2.4	1	3
% Greater Depth Maths	6.7	2	16.7	4.7	1	1	7.9	2	1	7.9	2	1	4.9	1	1
% Expected Science	-13.4	-4	82.2	-5.8	-2	2	-2.2	-1	2	1.8	1	3	-3.8	-1	2
% at least Expected Reading, Writing & Maths	-13.3	-4	68.9	3.7	1	3	5.2	2	3	8.1	2	3	6.5	2	3
% Greater Depth Reading, Writing & Maths	3.3	1	12.2	6.8	2	2	8.8	3	2	8.9	3	3	7.4	2	2

Note: above graded colour scale based on displayed figures only, it is intended only to help quickly identify areas of strengths and weaknesses

Percentile and Ranking Trends



Schools and academies are ranked purely on the basis of the attainment measure being displayed, with 1st being the highest achieving out of 302 in Birmingham. The percentile is calculated using normalised score of 1 - 100 and represents the percentage of schools in Birmingham achieving a higher outcome.

Trend Explained

% Diff - Compares current year to previous year by % of pupils achieving
Pupils - The difference in current year from previous by number of pupils achieving
Average - Represents a 3 year rolling average for the indicated measure

Comparison Explained (relates to current year only)

% Diff - Compares school/academy to indicated benchmark by % of pupils achieving
Pupils - Represents the % Diff in pupil numbers e.g. -2 would mean you are were 2 children away from achieving the average for the benchmark.
Above - Shows how many times you were above the average outcome for the indicated benchmark over the past 3 years.

St John and Monica Catholic Primary School

	Gender			Free School Meals			Disadvantaged			Language			Special Educational Needs			
	Boys	Girls	Gap	Yes	No	Gap	Yes	No	Gap	EAL	Non	Gap	All SEN	ECHP	Support	Non
Eligible pupils	17	13		7	23		7	23		18	12		5	1	4	25
% At least Expected Reading	70.6	69.2	1.4	71.4	69.6	1.8	71.4	69.6	1.8	61.1	83.3	-22.2	0	0	0	84
% Greater Depth Reading	35.3	15.4	19.9	0	34.8	-34.8	0	34.8	-34.8	22.2	33.3	-11.1	0	0	0	32
% At least Expected Writing	58.8	69.2	-10.4	57.1	65.2	-8.1	57.1	65.2	-8.1	55.6	75	-19.4	0	0	0	76
% Greater Depth Writing	17.6	15.4	2.2	0	21.7	-21.7	0	21.7	-21.7	22.2	8.3	13.9	0	0	0	20
% At least Expected Maths	76.5	61.5	15	71.4	69.6	1.8	71.4	69.6	1.8	61.1	83.3	-22.2	20	0	25	80
% Greater Depth Maths	29.4	7.7	21.7	0	26.1	-26.1	0	26.1	-26.1	16.7	25	-8.3	0	0	0	24
% Expected Science	76.5	69.2	7.3	71.4	73.9	-2.5	71.4	73.9	-2.5	61.1	91.7	-30.6	20	0	25	84
% at least Expected Reading, Writing & Maths	58.8	61.5	-2.7	57.1	60.9	-3.8	57.1	60.9	-3.8	55.6	66.7	-11.1	0	0	0	72
% Greater Depth Reading, Writing & Maths	17.6	7.7	9.9	0	17.4	-17.4	0	17.4	-17.4	16.7	8.3	8.4	0	0	0	16

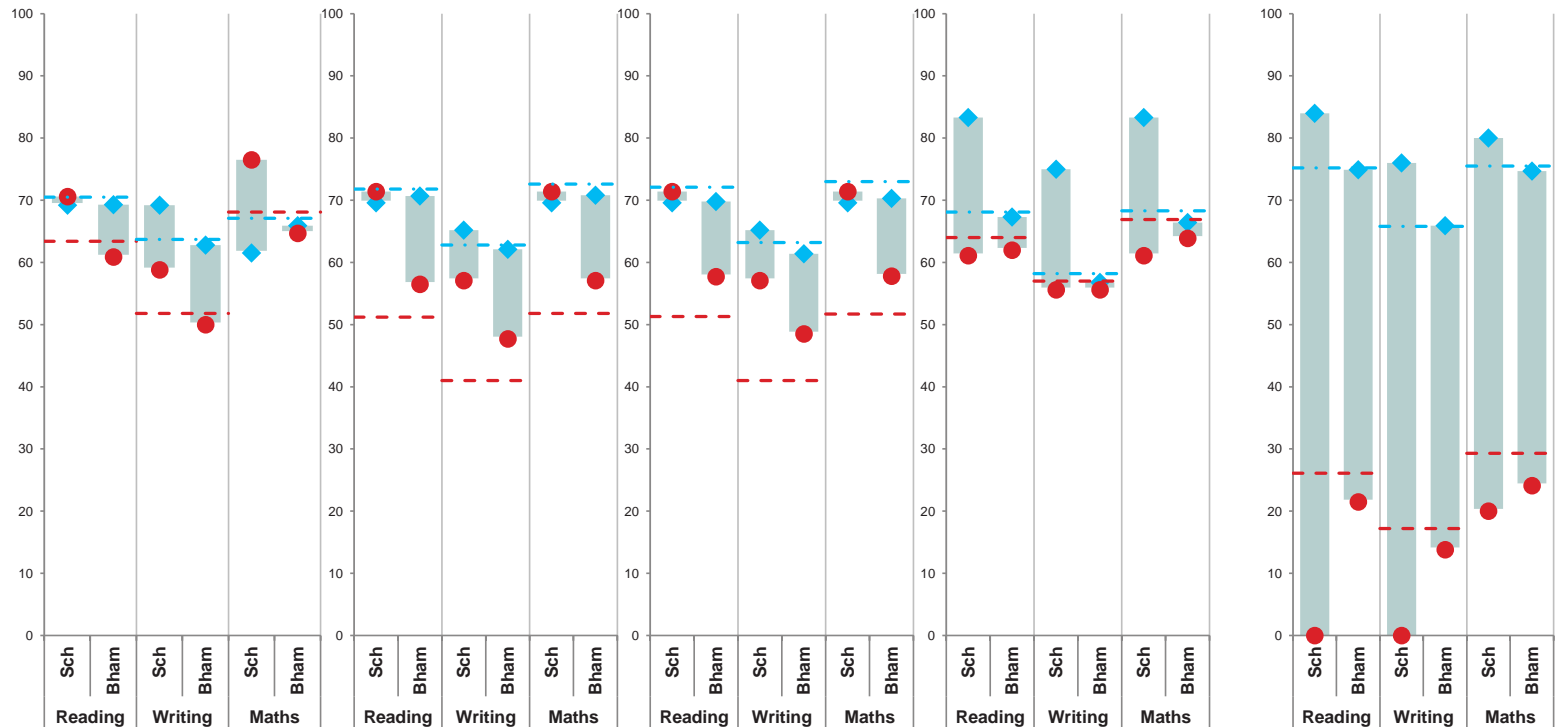
The graphs to the right compare the percentage of children achieving at least the expected standard by the pupil groups directly above.

The blue diamond represents the *nationally* higher achieving of the two corresponding groups, where as the red circle is the *nationally* lower achieving. The grey box inbetween the two markers represents the achievement gap.

The horizontal lines represent the same measures but for national outcomes.

Legend

- Gender
 - ◆ Girls
 - Boys
- Free School Meals
 - ◆ non FSM
 - FSM
- Disadvantaged
 - ◆ non Disadvantaged
 - Disadvantaged
- Language
 - ◆ non EAL
 - EAL
- SEN
 - ◆ No identified SEN
 - SEN



Key stage 1 Pupil Group Performance 2022

Birmingham

	Gender			Free School Meals			Disadvantaged			Language			Special Educational Needs			
	Boys	Girls	Gap	Yes	No	Gap	Yes	No	Gap	EAL	Non	Gap	All SEN	ECHP	Support	Non
Eligible pupils	7957	7623		6285	9295		6190	9390		6600	8911		2870	469	2401	12695
% At least Expected Reading	60.9	69.3	-8.4	56.5	70.7	-14.2	57.7	69.8	-12.1	62	67.3	-5.3	21.5	5.3	24.7	74.9
% Greater Depth Reading	12.7	15.4	-2.7	8.9	17.5	-8.6	9.2	17.2	-8	11.5	15.9	-4.4	1.6	0.4	1.8	16.8
% At least Expected Writing	50	62.8	-12.8	47.7	62.1	-14.4	48.5	61.4	-12.9	55.6	56.8	-1.2	13.8	2.6	16	65.9
% Greater Depth Writing	4.6	7.3	-2.7	3.4	7.6	-4.2	3.6	7.4	-3.8	5.6	6.1	-0.5	0.5	0.2	0.5	7.1
% At least Expected Maths	64.7	65.9	-1.2	57.1	70.8	-13.7	57.8	70.3	-12.5	63.9	66.4	-2.5	24.1	4.9	27.9	74.7
% Greater Depth Maths	13.7	10.4	3.3	8	14.9	-6.9	8.3	14.6	-6.3	11.9	12.2	-0.3	2.4	0.9	2.7	14.3
% Expected Science	69	74.1	-5.1	64.3	76.4	-12.1	65.3	75.6	-10.3	68.2	74.1	-5.9	28.7	6.2	33.2	81.3
% at least Expected Reading, Writing & Maths	47.1	57	-9.9	43.1	57.9	-14.8	43.7	57.3	-13.6	51.4	52.4	-1	11.8	1.7	13.8	61
% Greater Depth Reading, Writing & Maths	3.9	4.9	-1	2.3	5.7	-3.4	2.5	5.6	-3.1	4.3	4.4	-0.1	0.3	0.2	0.3	5.3

National

	Gender			Free School Meals			Disadvantaged			Language			Special Educational Needs			
	Boys	Girls	Gap	Yes	No	Gap	Yes	No	Gap	EAL	Non	Gap	All SEN	ECHP	Support	Non
Eligible pupils	327949	311466		153310	486105		161140	478275		131747	500821		102790	20576	82214	530997
% At least Expected Reading	63.4	70.5	-7.1	51.2	71.8	-20.6	51.3	72.1	-20.8	64	68.1	-4.1	26.1	12	29.6	75.2
% Greater Depth Reading	16.3	19.7	-3.4	8.2	21.1	-12.9	8.3	21.2	-12.9	15.6	18.7	-3.1	3.9	1.7	4.4	20.8
% At least Expected Writing	51.8	63.7	-11.9	41	62.8	-21.8	41	63.2	-22.2	57	58.2	-1.2	17.2	7.3	19.7	65.8
% Greater Depth Writing	6.2	9.9	-3.7	3.1	9.5	-6.4	3.1	9.6	-6.5	8.1	8	0.1	1.2	0.5	1.3	9.4
% At least Expected Maths	68.1	67.1	1	51.8	72.6	-20.8	51.7	73	-21.3	66.9	68.3	-1.4	29.3	13.7	33.1	75.5
% Greater Depth Maths	17.6	12.4	5.2	6.7	17.7	-11	6.8	17.9	-11.1	15.6	15	0.6	4	2.2	4.5	17.3
% Expected Science	75	79.2	-4.2	62.8	81.5	-18.7	62.8	81.8	-19	72.3	78.8	-6.5	38	15.8	43.6	85.1
% at least Expected Reading, Writing & Maths	49.2	57.7	-8.5	np	np		np	np		np	np		np	np	np	np
% Greater Depth Reading, Writing & Maths	5.3	6.6	-1.3	np	np		np	np		np	np		np	np	np	np

Key stage 2 performance part 1

	School			Moseley ward			Hall Green			Birmingham			National		
	2018	2019	2022	2018	2019	2022	2018	2019	2022	2018	2019	2022	2018	2019	2022
Eligible pupils	30	30	31	230	203	235	1786	1905	1780	15593	16232	16513	619690	644970	666066
% at least Expected Reading Test	76.7	80	74.2	80	79.8	78.7	73.4	71.7	74.7	71.3	69.8	73.9	75.3	73.2	74.6
% High standard Reading Test	33.3	33.3	32.3	30.4	36	29.8	26.9	28.7	26.8	24.6	24.8	27.2	28.2	27	28
Scaled Score Reading	104.7	106.4	103.7	106.3	106.5	105.2	104.6	104.3	104.7	104.1	103.7	104.6	105	104.4	104.8
% at least Expected Writing TA	76.7	76.7	48.4	83	85.2	62.1	79.2	79.1	64.1	75.8	76.2	67.2	78.3	78.4	69.4
% Greater Depth Writing TA	16.7	26.7	0	20.4	22.2	9.4	16.8	17.7	9.1	15	16.2	10.2	19.9	20.1	12.8
% at least Expected Maths Test	76.7	83.3	64.5	79.6	81.8	74.9	76.6	80.7	73.2	73	76.9	70.5	75.5	78.7	71.5
% High Maths Test	26.7	36.7	29	27	33.5	29.4	24.9	32.1	24.4	22.9	26.7	22.6	23.6	26.6	22.5
Scaled Score Maths	105.7	107	103.5	105.6	106.2	105.1	104.6	106	104.5	104	104.9	103.7	104.4	105	103.8
% at least Expected GPS Test	83.3	83.3	71	86.1	86.7	80.9	79.8	82.6	76.7	77.4	79.2	74.5	77.6	78	72.5
% High GPS Test	33.3	63.3	29	46.5	48.3	34.5	41.5	46.7	33.4	37.5	40.5	32.1	34.4	35.7	28.2
Scaled Score GPS	107	110.3	104.7	108.6	109	107.2	107.2	108.3	106.2	106.6	107.2	105.8	106.2	106.3	105.1
% at least Expected Reading, Writing & Maths	73.3	73.3	45.2	72.2	72.9	57	65.8	66.4	56	61.1	62.1	57.5	64.4	64.9	58.7
% Higher Standard Reading, Writing & Maths	16.7	23.3	0	9.1	15.3	7.7	9.7	11.4	5.8	8.5	9.4	6.4	9.9	10.6	7.2
Progress Reading	-2.55	-0.89	1.14	0.47	1.89	0.48	0.21	0.42	0.79	-0.29	-0.09	0.64	0.03	0.03	0.04
<i>Reading standard deviation ±</i>	2.22	2.21	2.29	0.8	0.86	0.83	0.29	0.29	0.3	0.1	0.1	0.1			
Progress Writing	-2.91	-2.01	-3.12	0.37	1.12	-1.47	0.32	0.29	-0.31	-0.32	-0.16	0.05	0.03	0.03	0.05
<i>Writing standard deviation ±</i>	2.11	2.01	2.22	0.73	0.78	0.77	0.28	0.31	0.31	0.12	0.06	0.05			
Progress Maths	-0.93	-0.84	1.88	0.34	1.02	1.32	0.75	1.37	1.21	0.15	0.33	0.59	0.03	0.03	0.04
<i>Maths standard deviation ±</i>	2.01	1.93	2.13	0.72	0.75	0.78	0.26	0.25	0.28	0.09	0.09	0.09			

Floor Standard	Min	School	Below?	Floor eligibility criteria	Min	School
Attainment (RWM)	65	45.2	Yes	Eligible pupils	11	31
Reading Progress	-5	1.14	No	Pupils with KS1 assessments	-	29
Writing Progress	-7	-3.12	No	% with KS1 assessments	50	94
Maths Progress	-5	1.88	No	Special / Alternate provision?	No	No

School Above Floor

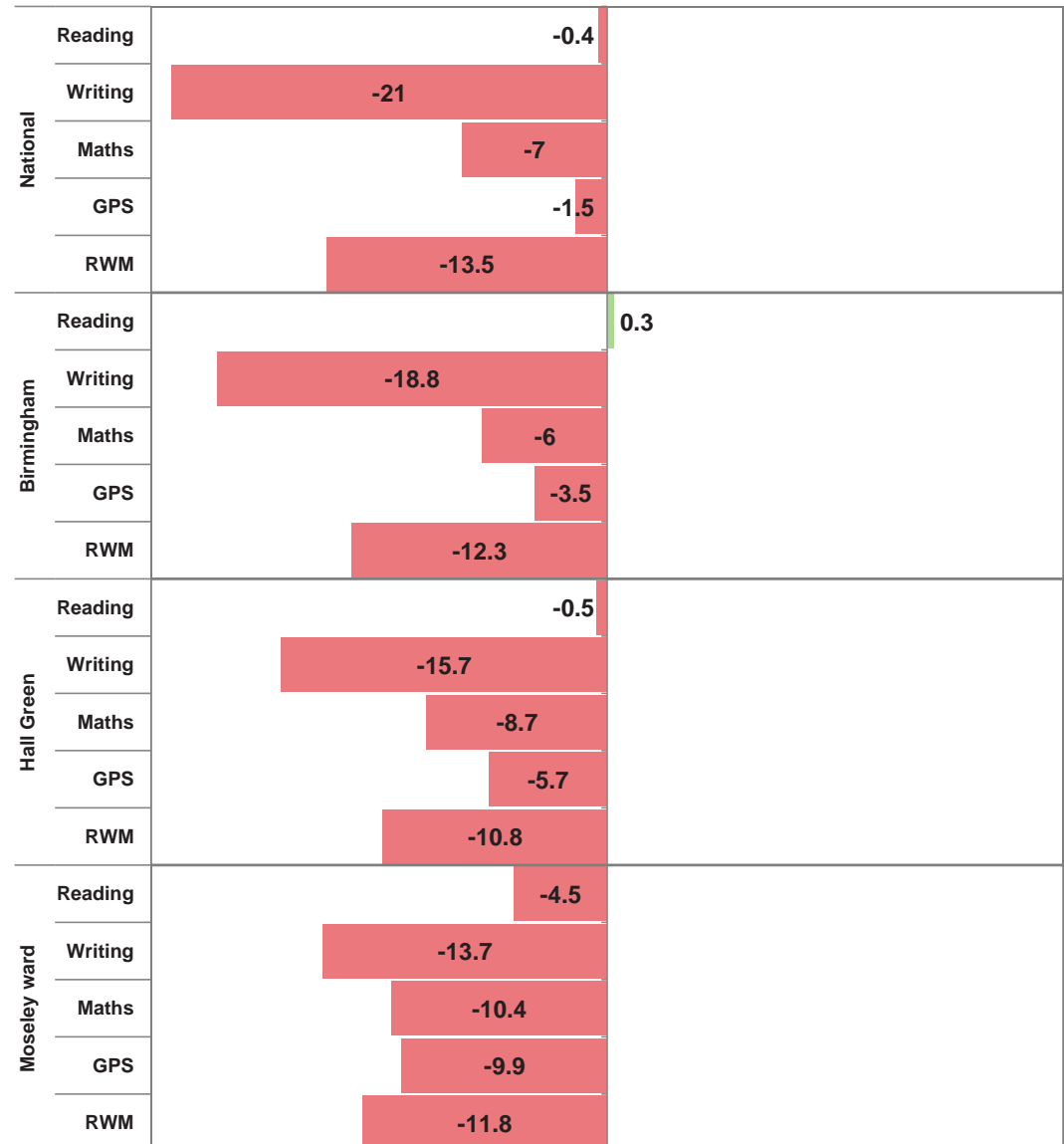
Key stage 2 data is based on the Revised data release

Key stage 2 performance part 2

Reaching at least the expected standard current year



Attainment difference of school to indicated subject in current year



Key stage 2 data is based on the Revised data release

Key stage 2 Performance Trends and Comparisons 2022

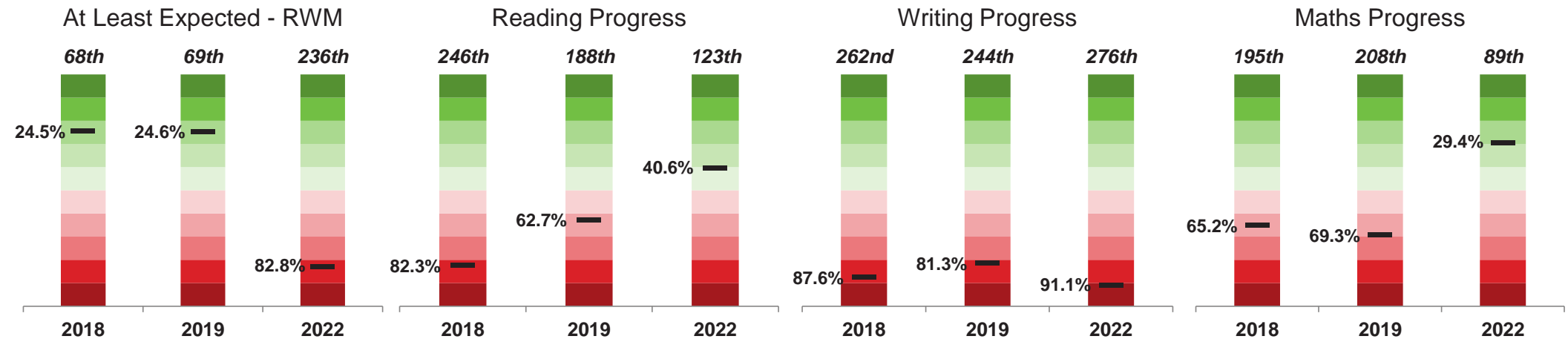
St John and Monica Catholic Primary School

In 2022 this setting had 31 pupils at the end of KS2

	Trend			Comparison to Setting											
	School Attainment			Moseley ward			Hall Green			Birmingham			National		
	% Diff	Pupils	Average	% Diff	Pupils	Above	% Diff	Pupils	Above	% Diff	Pupils	Above	% Diff	Pupils	Above
% at least Expected Reading Test	-5.8	-2	76.9	-4.5	-1	1	-0.5	0	2	0.3	0	3	-0.4	0	2
% High standard Reading Test	-1	0	33	2.5	1	2	5.5	2	3	5.1	2	3	4.3	1	3
Scaled Score Reading	-2.7		104.9	-1.5		0	-1		2	-0.9		2	-1.1		1
% at least Expected Writing TA	-28.3	-9	67	-13.7	-4	0	-15.7	-5	0	-18.8	-6	2	-21	-7	0
% Greater Depth Writing TA	-26.7	-8	14.3	-9.4	-3	1	-9.1	-3	1	-10.2	-3	2	-12.8	-4	1
% at least Expected Maths Test	-18.8	-6	74.7	-10.4	-3	1	-8.7	-3	2	-6	-2	2	-7	-2	2
% High Maths Test	-7.7	-2	30.8	-0.4	0	1	4.6	1	3	6.4	2	3	6.5	2	3
Scaled Score Maths	-3.5		105.4	-1.6		2	-1		2	-0.2		2	-0.3		2
% at least Expected GPS Test	-12.3	-4	79.1	-9.9	-3	0	-5.7	-2	2	-3.5	-1	2	-1.5	0	2
% High GPS Test	-34.3	-11	41.8	-5.5	-2	1	-4.4	-1	1	-3.1	-1	1	0.8	0	2
Scaled Score GPS	-5.6		107.3	-2.5		1	-1.5		1	-1.1		2	-0.4		2
% at least Expected Reading, Writing & Maths	-28.1	-9	63.7	-11.8	-4	2	-10.8	-3	2	-12.3	-4	2	-13.5	-4	2
% Higher Standard Reading, Writing & Maths	-23.3	-7	13.2	-7.7	-2	2	-5.8	-2	2	-6.4	-2	2	-7.2	-2	2
Progress Reading	2.03			0.66		1	0.35		1	0.5		1	1.1		1
Progress Writing	-1.11			-1.65		0	-2.81		0	-3.17		0	-3.17		0
Progress Maths	2.72			0.56		1	0.67		1	1.29		1	1.84		1

Note: above graded colour scale based on displayed figures only and treat attainment and progress separately, it is intended only to help quickly identify areas of strengths and weaknesses

Percentile and Ranking Trends



Schools and academies are ranked purely on the basis of the attainment / progress measure being displayed, with 1st being the highest achieving out of 305 in Birmingham
The percentile is calculated using normalised score of 1 - 100 and represents the percentage of schools in Birmingham achieving a higher outcome.

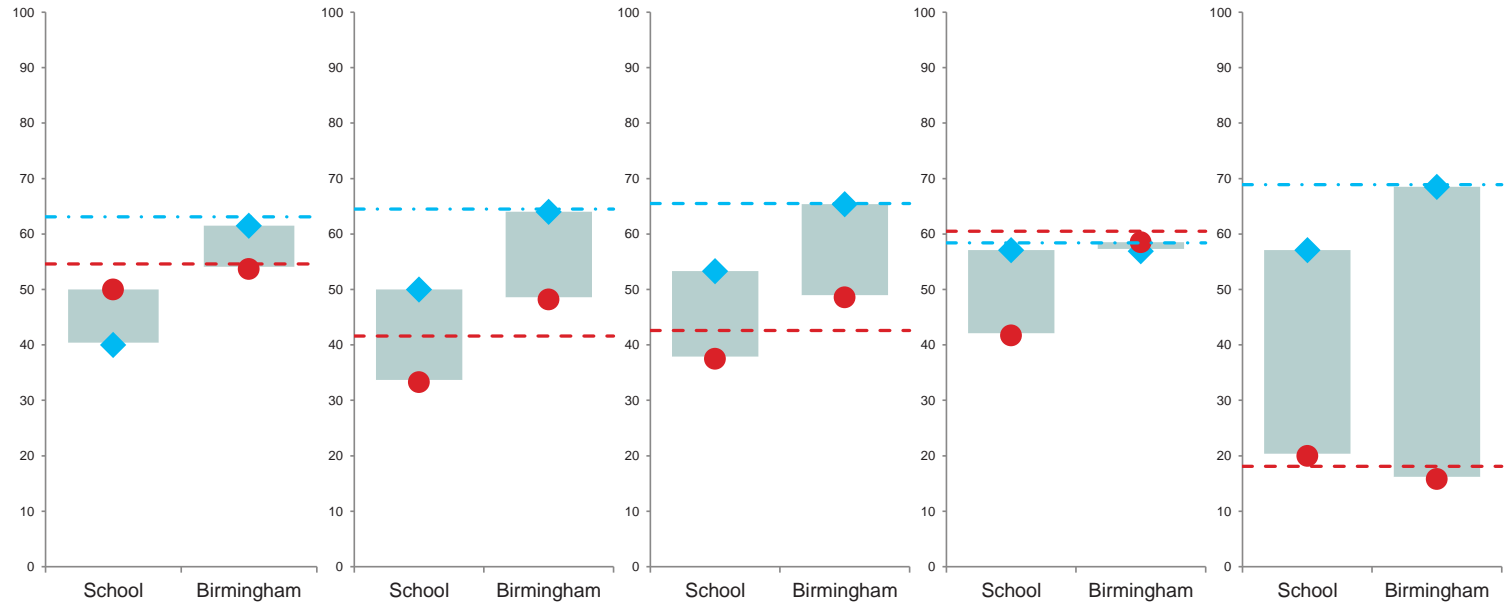
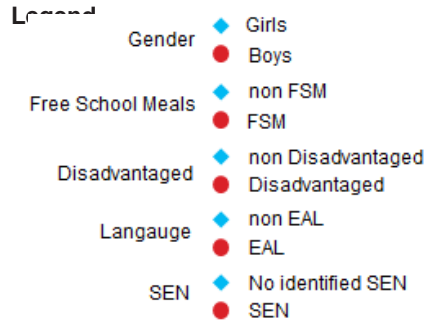
Key stage 2 Group Performance 2022 (Revised)

St John and Monica Catholic Primary School

	Gender			Free School Meals			Disadvantaged			Language			Special Educational Needs			
	Boys	Girls	Gap	Yes	No	Gap	Yes	No	Gap	EAL	Non	Gap	All SEN	ECHP	Support	Non
Eligible pupils	16	15		9	22		16	15		24	7		10	1	9	21
% at least Expected Reading Test	81.2	66.7	14.5	77.8	72.7	5.1	75	73.3	1.7	70.8	85.7	-14.9	30	0	33.3	95.2
% High standard Reading Test	43.8	20	23.8	33.3	31.8	1.5	25	40	-15	25	57.1	-32.1	10	0	11.1	42.9
Scaled Score Reading	105.1	102.2	2.9	104	103.6	0.4	103.1	104.3	-1.2	102.6	107.4	-4.8	95.7	93	96	107.5
% at least Expected Writing TA	50	46.7	3.3	33.3	54.5	-21.2	43.8	53.3	-9.5	45.8	57.1	-11.3	20	0	22.2	61.9
% Greater Depth Writing TA	0	0	0	0	0	0	0	0	0	0	0	0	0	0	0	0
% at least Expected Maths Test	68.8	60	8.8	55.6	68.2	-12.6	50	80	-30	58.3	85.7	-27.4	30	0	33.3	81
% High Maths Test	43.8	13.3	30.5	11.1	36.4	-25.3	18.8	40	-21.2	29.2	28.6	0.6	10	0	11.1	38.1
Scaled Score Maths	105.3	101.6	3.7	101.7	104.3	-2.6	101.8	105.4	-3.6	102.3	107.6	-5.3	97	89	97.9	106.6
% at least Expected GPS Test	81.2	60	21.2	77.8	68.2	9.6	68.8	73.3	-4.5	66.7	85.7	-19	40	100	33.3	85.7
% High GPS Test	43.8	13.3	30.5	33.3	27.3	6	25	33.3	-8.3	25	42.9	-17.9	10	0	11.1	38.1
Scaled Score GPS	107	102.3	4.7	103.8	105.1	-1.3	103.6	105.9	-2.3	103.9	107.6	-3.7	98.8	101	98.6	107.5
% at least Expected Reading, Writing & Maths	50	40	10	33.3	50	-16.7	37.5	53.3	-15.8	41.7	57.1	-15.4	20	0	22.2	57.1
% Higher Standard Reading, Writing & Maths	0	0	0	0	0	0	0	0	0	0	0	0	0	0	0	0
Progress Reading	1.56	0.68	0.88	2.62	0.47	2.15	1	1.31	-0.31	0.97	1.66	-0.69	-2.28	-3.12	-2.19	2.94
Progress Writing	-3.3	-2.93	-0.37	-5.48	-2.06	-3.42	-3.71	-2.4	-1.31	-2.83	-4.02	1.19	-4.56	-1.5	-4.9	-2.36
Progress Maths	2.97	0.72	2.25	1.31	2.15	-0.84	0.63	3.43	-2.8	1.57	2.87	-1.3	-0.28	-6.11	0.36	3.03

The graphs to the right compare the percentage of children achieving at least the expected standard in Reading, Writing & Maths by the pupil groups directly above.

Horizontal Lines represent National.



Key stage 2 Group Performance 2022 (Revised)

Birmingham

	Gender			Free School Meals			Disadvantaged			Language			Special Educational Needs			
	Boys	Girls	Gap	Yes	No	Gap	Yes	No	Gap	EAL	Non	Gap	All SEN	ECHP	Support	Non
Eligible pupils	8468	8045		6782	9731		7775	8738		7414	8994		3411	610	2801	13047
% at least Expected Reading Test	69.5	78.6	-9.1	66.7	79	-12.3	67.1	80	-12.9	73	74.9	-1.9	34.4	9.2	39.9	84.4
% High standard Reading Test	22.7	31.9	-9.2	21	31.5	-10.5	21.2	32.5	-11.3	26.1	28.2	-2.1	7.4	2.1	8.5	32.5
Scaled Score Reading	103.6	105.6	-2	103.1	105.6	-2.5	103.2	105.8	-2.6	104.2	104.9	-0.7	97.3	94.5	97.5	106.2
% at least Expected Writing TA	60.7	74	-13.3	58.5	73.3	-14.8	59	74.5	-15.5	67.1	67.6	-0.5	22.8	6.4	26.3	79
% Greater Depth Writing TA	7.9	12.7	-4.8	6.3	12.9	-6.6	6.4	13.6	-7.2	9.4	10.9	-1.5	1.6	0.3	1.9	12.5
% at least Expected Maths Test	71.4	69.6	1.8	61.8	76.6	-14.8	62.3	77.9	-15.6	72.8	68.8	4	31.1	7.1	36.4	80.9
% High Maths Test	25.4	19.6	5.8	14.4	28.3	-13.9	14.8	29.5	-14.7	24	21.5	2.5	5.3	2	6	27.2
Scaled Score Maths	104.3	103.1	1.2	101.7	105	-3.3	101.8	105.3	-3.5	104.1	103.3	0.8	96.6	94	96.8	105.2
% at least Expected GPS Test	70.5	78.6	-8.1	66.1	80.3	-14.2	66.8	81.3	-14.5	76.3	73.1	3.2	31.9	8.5	37	85.7
% High GPS Test	29.1	35.3	-6.2	24.2	37.6	-13.4	24.5	38.9	-14.4	34.8	30.1	4.7	7.5	3.1	8.5	38.7
Scaled Score GPS	105.1	106.7	-1.6	104	107.1	-3.1	104.1	107.4	-3.3	106.3	105.5	0.8	97.7	95.9	97.9	107.6
% at least Expected Reading, Writing & Maths	53.7	61.5	-7.8	48.2	64	-15.8	48.6	65.4	-16.8	58.5	56.9	1.6	15.8	4.1	18.4	68.5
% Higher Standard Reading, Writing & Maths	5.3	7.6	-2.3	3.4	8.5	-5.1	3.5	9	-5.5	5.9	6.9	-1	0.8	0.3	0.9	7.9
Progress Reading	0.02	1.3	-1.28	0.2	0.95	-0.75	0.17	1.06	-0.89	1.06	0.35	0.71	-1.08	-3.33	-0.63	1.1
Progress Writing	-0.66	0.8	-1.46	-0.54	0.46	-1	-0.54	0.58	-1.12	0.61	-0.35	0.96	-2.11	-3.64	-1.8	0.64
Progress Maths	1.5	-0.36	1.86	-0.29	1.19	-1.48	-0.25	1.33	-1.58	1.62	-0.17	1.79	-1.02	-3.28	-0.58	1.02

National

	Gender			Free School Meals			Disadvantaged			Language			Special Educational Needs			
	Boys	Girls	Gap	Yes	No	Gap	Yes	No	Gap	EAL	Non	Gap	All SEN	ECHP	Support	Non
Eligible pupils	340998	325068		167979	498087		198747	467319		141811	520674		131278	29686	101592	531892
% at least Expected Reading Test	69.7	79.8	-10.1	61.3	79.1	-17.8	62.3	79.9	-17.6	73	75.3	-2.3	37.6	16.2	43.8	84
% High standard Reading Test	22.9	33.3	-10.4	16.8	31.7	-14.9	17.3	32.5	-15.2	27.3	28.3	-1	8.2	3.6	9.5	33
Scaled Score Reading	103.7	105.9	-2.2	102	105.7	-3.7	102.2	105.8	-3.6	104.5	104.9	-0.4	98	95.9	98.3	106.2
% at least Expected Writing TA	62.8	76.4	-13.6	54.3	74.5	-20.2	55.2	75.5	-20.3	69.7	69.6	0.1	26	10.6	30.5	80.3
% Greater Depth Writing TA	9.6	16.1	-6.5	5.8	15.1	-9.3	6.1	15.6	-9.5	13.1	12.7	0.4	2.3	1	2.7	15.4
% at least Expected Maths Test	72.3	70.6	1.7	55.3	76.9	-21.6	56.3	77.9	-21.6	75.3	70.7	4.6	34.2	14.8	39.8	80.9
% High Maths Test	25	19.9	5.1	11.1	26.3	-15.2	11.7	27.1	-15.4	28	21.1	6.9	5.7	2.8	6.6	26.7
Scaled Score Maths	104.3	103.3	1	100.6	104.8	-4.2	100.8	105	-4.2	104.9	103.5	1.4	97.3	95.5	97.5	105.2
% at least Expected GPS Test	68.2	77	-8.8	57.6	77.5	-19.9	58.6	78.4	-19.8	75.8	71.8	4	31.6	15.1	36.4	82.8
% High GPS Test	25	31.7	-6.7	16.3	32.3	-16	16.9	33	-16.1	35.6	26.3	9.3	6.9	3.8	7.8	33.6
Scaled Score GPS	104.2	105.9	-1.7	101.9	106.1	-4.2	102.1	106.2	-4.1	106.4	104.7	1.7	97.5	96.3	97.7	106.6
% at least Expected Reading, Writing & Maths	54.6	63.1	-8.5	41.6	64.5	-22.9	42.6	65.5	-22.9	60.5	58.4	2.1	18.1	7.1	21.2	68.9
% Higher Standard Reading, Writing & Maths	5.9	8.6	-2.7	2.6	8.8	-6.2	2.8	9.1	-6.3	8	7	1	1.1	0.4	1.2	8.8
Progress Reading	-0.75	0.86	-1.61	-0.88	0.35	-1.23	-0.83	0.41	-1.24	0.88	-0.16	1.04	-1.88	-4.49	-1.17	0.51
Progress Writing	-0.77	0.89	-1.66	-0.8	0.33	-1.13	-0.76	0.39	-1.15	1.16	-0.22	1.38	-2.1	-4.11	-1.55	0.58
Progress Maths	0.83	-0.79	1.62	-1.22	0.46	-1.68	-1.15	0.54	-1.69	2.01	-0.43	2.44	-1.54	-3.88	-0.91	0.43

Notes on this report

School outcomes represent the attainment of pupils at the indicated school or academy or the previous establishment where appropriate

Ward and District outcomes represent the combined attainment of children living within the indicated area and who attend a school in Birmingham according to the January school census for 2022

Birmingham outcomes represent the combined attainment for all schools in Birmingham with the exception of Pupil Referral Units and Hospital schools

National figures are primarily sourced from corresponding statistics released by the DfE on www.gov.uk, with ASP and performance tables acting as secondary sources

Red, Amber, White and Green indicators used in this document are an LA interpretation and not directly comparable to Ofsted measures, use for REFERENCE only.

RAG rating relates to the National outcome. If National outcome is not available then the Birmingham outcome is supplemented.

	Green	Amber	Red
EYFSP attainment	0.5	-4	-10
EYFSP ELG	0.25	-1	-2
KS2 attainment	0.5	-4	-10
KS2 scaled scores	0.5	-3	-5
KS2 progress	0.01	-0.5	-1.5
Phonics attainment	0.5	-4	-10
KS1 attainment	0.5	-4	-10

Trend Explained

% Diff - Compares current year to previous year by % of pupils achieving

Pupils - The difference in current year from previous by number of pupils achieving

Average - Represents a 3 year rolling average for the indicated measure

Comparison Explained (relates to current year only)

% Diff - Compares school/academy to indicated benchmark by % of pupils achieving

Pupils - Represents the % Diff in pupil numbers e.g. -2 would mean you are were 2 children away from achieving the average for the benchmark.

Above - Shows how many times you were above the average outcome for the indicated benchmark

National Outcomes

Wherever possible national outcomes are taken from the official statistics published by the DfE. Note that they may change throughout the year if replaced by revised outcomes.

On occasion it may be necessary to take national outcomes from other reliable sources such as Performance Tables or ASP

The code outcome code **np** means that the figure has not been published - wherever possible this will be replaced with national outcomes if available as and when published

For further information regarding national and regional school attainment access the following link:

<https://www.gov.uk/government/organisations/departement-for-education/about/statistics>

For further information regarding school attainment in Birmingham access the following link:

https://www.birmingham.gov.uk/info/20113/policies_and_strategies/1076/education_performance_and_statistics

If you have a query regarding this report then please contact us using the email address below

educationdata@birmingham.gov.uk