

Name: _____ Date: _____



Read the Information Sheet about industries in the UK, then answer these true or false questions.

1. Nottingham is famous for its lace industry.

True

False

2. Belfast is the commercial centre of Wales.

True

False

3. Aberdeen is the home of Britain's petroleum industry.

True

False

4. Lots of bricks are made out of the clay found in Surrey.

True

False

5. Cornwall has a big shipping industry.

True

False

6. Lots of people work in banks in London.

True

False

7. There are lots of jobs in the forestry industry in Wales.

True

False

8. Bristol is the home of the UK's steel industry.

True

False

9. Cornwall has a large cheese industry.

True

False

10. There are lots of jobs in the tourist industry in London.

True

False

11. Kent produces lots of apples and hops.

True

False

12. Stoke-on-Trent has a strong pottery industry.

True

False

Name: _____ Date: _____



Read the Information Sheet about industries in the UK, then answer these questions.

1. Which part of the UK is famous for its lace industry?

2. Which part of the UK employs lots of people in car factories?

3. How many people does the forestry industry in Wales employ?

4. Which city is the commercial and educational centre of Northern Ireland?

5. Where is the UK's petroleum industry based?

6. Why is Kent known as the 'Garden of England'?

7. Where is the centre of Britain's steel and metal industries?

8. Which part of the UK has a large construction industry?

9. Where is the financial centre of the UK?

10. Which area is known as 'The Potteries' and why?

Name: _____ Date: _____



Read the Information Sheet about industries in the UK and try and remember as much as you can. Write some questions to test a friend to see how much they can remember!

Question 1:

Question 2:

Question 3:

Question 4:

Question 5:

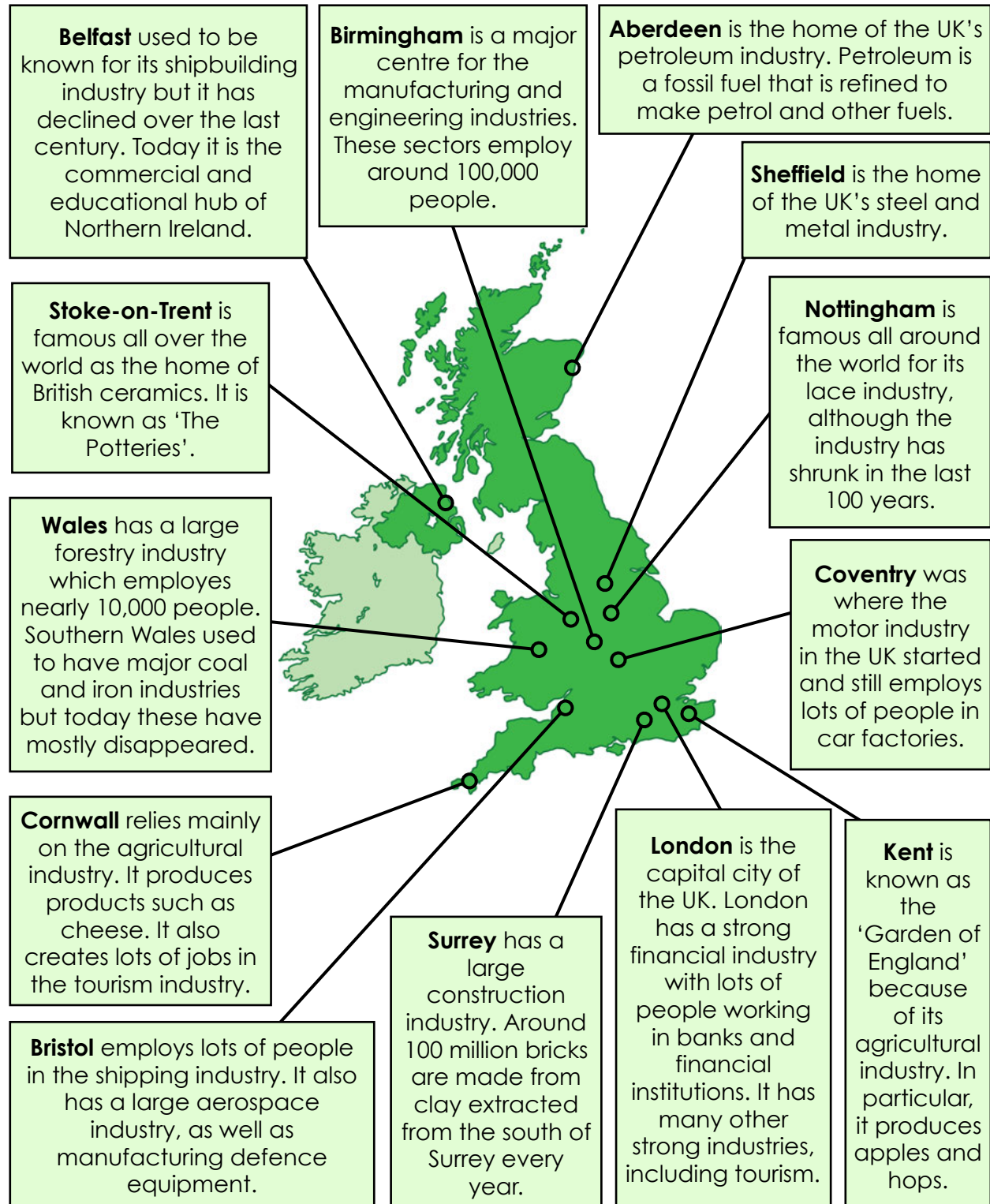
Question 6:

Question 7:

Question 8:

Industry in the United Kingdom

There are lots of different industries in the United Kingdom and some parts of the country have industries that are particularly strong, depending on the resources available in the area. Large cities tend to have strong retail, tourism and finance industries while rural areas have stronger agricultural industries.



The city of **Belfast** used to be known for its shipbuilding industry but it has declined over the last century. Today it is the commercial and educational hub of Northern Ireland.

The city of **Birmingham** is a major centre for the manufacturing and engineering industries. These sectors employ around 100,000 people.

The city of **Aberdeen** is the home of the UK's petroleum industry. Petroleum is a fossil fuel that is refined to make petrol and other fuels.

The city of **Sheffield** is the home of Britain's steel and metal industry.

The city of **Nottingham** is famous all around the world for its lace industry, although the industry has shrunk in the last 100 years.

The city of **Coventry** was where the motor industry in the UK started and still employs lots of people in car factories.

The county of **Kent** is known as the 'Garden of England' because of its agricultural industry. In particular, it produces apples and hops.

London is the capital city of the UK. London has a strong financial industry with lots of people working in banks and financial institutions. It has many other strong industries, including tourism.

The county of **Surrey** has a large construction industry. Around 100 million bricks are made from clay extracted from the south of Surrey every year.

The city of **Bristol** employs lots of people in the shipping industry. It also has a large aerospace industry, as well as manufacturing defence equipment.

The county of **Cornwall** relies mainly on the agricultural industry. It produces products such as cheese. It also creates lots of jobs in the tourism industry.

The country of **Wales** has a large forestry industry which employs nearly 10,000 people. Southern Wales used to have major coal and iron industries but today these have mostly disappeared.



Name: _____ Date: _____



Read the Information Sheet about industries in the UK, then answer these true or false questions.

1. Nottingham is famous for its lace industry.

True



False



2. Belfast is the commercial centre of Wales.

True



False



3. Aberdeen is the home of Britain's petroleum industry.

True



False



4. Lots of bricks are made out of the clay found in Surrey.

True



False



5. Cornwall has a big shipping industry.

True



False



6. Lots of people work in banks in London.

True



False



7. There are lots of jobs in the forestry industry in Wales.

True



False



8. Bristol is the home of the UK's steel industry.

True



False



9. Cornwall has a large cheese industry.

True



False



10. There are lots of jobs in the tourist industry in London.

True



False



11. Kent produces lots of apples and hops.

True



False



12. Stoke-on-Trent has a strong pottery industry.

True



False



Name: _____ Date: _____



Read the Information Sheet about industries in the UK, then answer these questions.

1. Which part of the UK is famous for its lace industry?

Nottingham

2. Which part of the UK employs lots of people in car factories?

Coventry

3. How many people does the forestry industry in Wales employ?

Nearly 10,000 people

4. Which city is the commercial and educational centre of Northern Ireland?

Belfast

5. Where is the UK's petroleum industry based?

Aberdeen

6. Why is Kent known as the 'Garden of England'?

Because of its agricultural industry

7. Where is the centre of Britain's steel and metal industries?

Sheffield

8. Which part of the UK has a large construction industry?

Surrey

9. Where is the financial centre of the UK?

London

10. Which area is known as 'The Potteries' and why?

Stoke-on-Trent because of its fame as the home of British ceramics.