

Match the word to the symbol by colouring it the same colour. Use the same coloured counter to show this feature on the map.



Beach

Building

Factory

Harbour

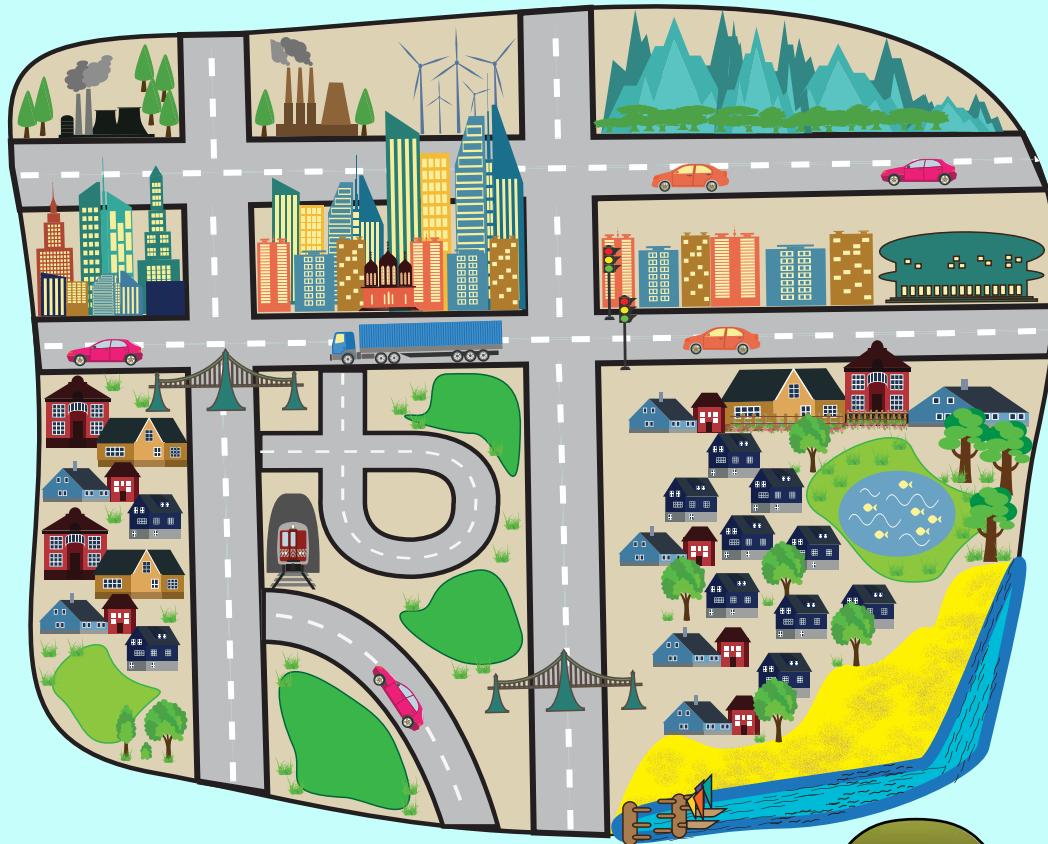
House

Mountain

Bridge

Park

Name: \_\_\_\_\_ Date: \_\_\_\_\_



Help! This map has no Key.  
Can you design symbols for the features  
on the map and name them? Remember  
to keep them simple.



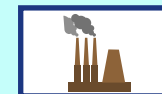
Mountain























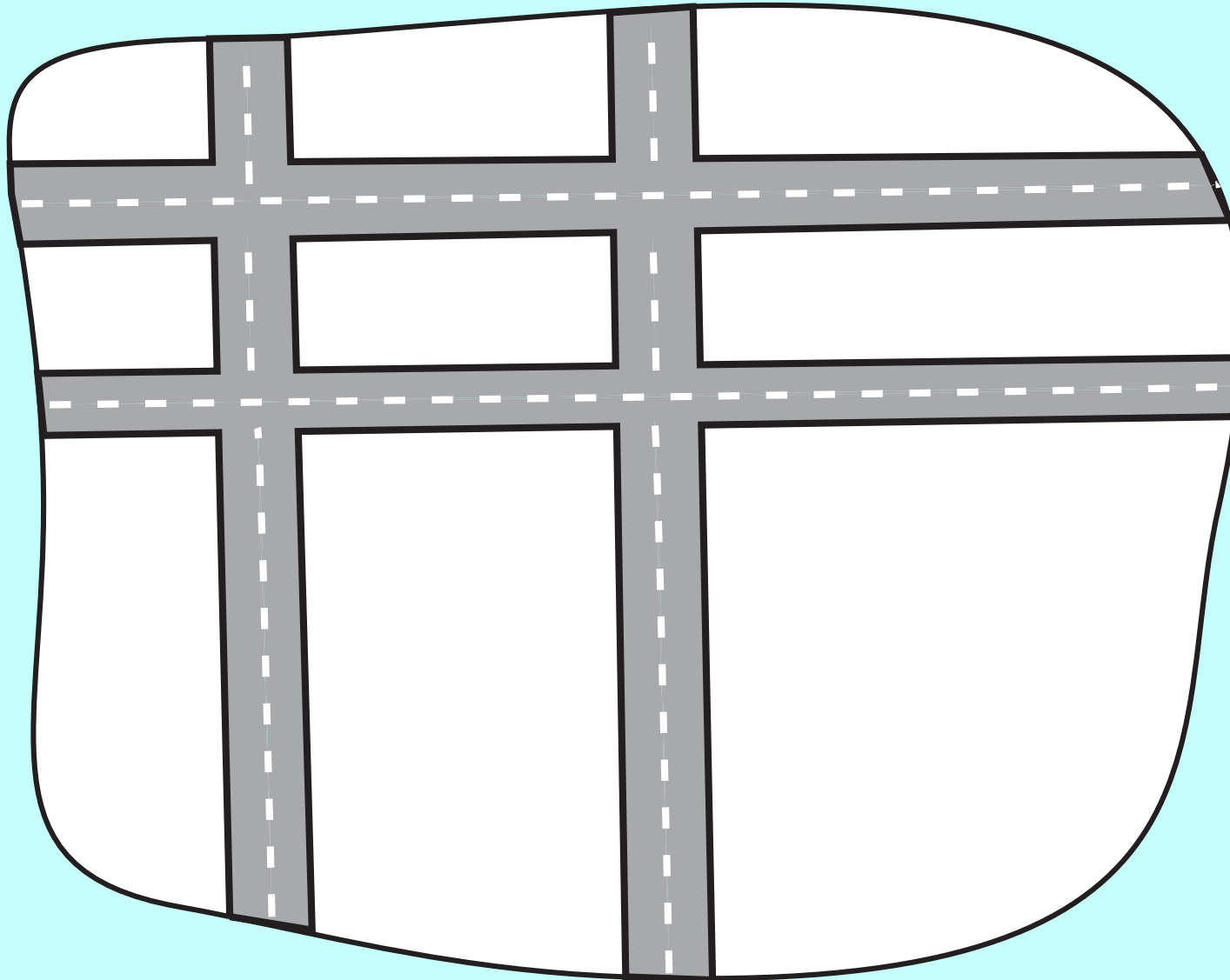

What symbols would you draw for these features?

River

Farm

Cliff

Name: \_\_\_\_\_ Date: \_\_\_\_\_



Can you design your own map showing these features? What symbols and patterns will you use? Remember you are looking down on the city.

**Tip:** Draw patterns on the map first to represent areas.



Name: \_\_\_\_\_ Date: \_\_\_\_\_

## City Map Key

Mountain

Beach

Building

Factory

Bridge

Harbour

Park

Hill

## Other features you will include in your city

















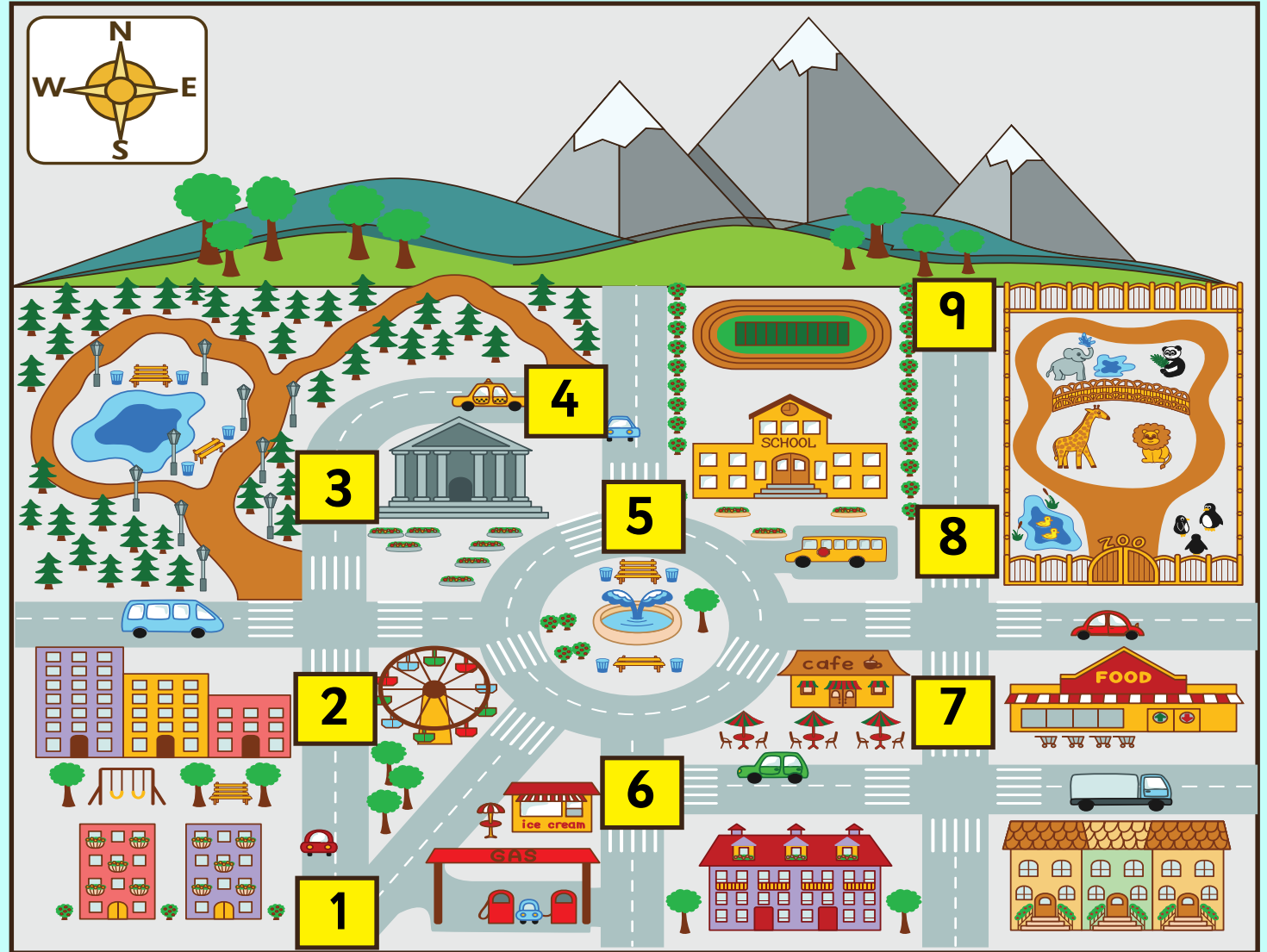





What is the name of your city?

\_\_\_\_\_

Find a partner and tour around Simon's City. Read the tourist cards and find your way around the city. Fill in the travel journal explaining the things you saw in the city.



Start at box 1.  
Turn and look **WEST**. What do you see?

Draw a symbol and write about the feature in your travel journal.

Walk up to box 2. Turn and look **EAST**. What do you see?

Draw a symbol and write about the feature in your travel journal.

Walk up to box 3. Turn and look **WEST**. What do you see?

Draw a symbol and write about the feature in your travel journal.

Walk across to box 4. Turn and look **NORTH**. What do you see?

Draw a symbol and write about the feature in your travel journal.

Walk up to box 9. Turn and look **WEST**. What do you see?

Draw a symbol and write about the feature in your travel journal.

Walk down to box 5. Turn and look **SOUTH**. What do you see?

Draw a symbol and write about the feature in your travel journal.

Walk around to box 6. Turn and look **WEST**. What do you see?

Draw a symbol and write about the feature in your travel journal.

Walk across to box 7. Turn and look **WEST**. What do you see?

Draw a symbol and write about the feature in your travel journal.

Walk up to box 8. Turn and look **EAST**. What do you see?

Draw a symbol and write about the feature in your travel journal.



My trip to Simon's City. These are the features and sights I saw. It was an amazing day.

