



# SEND NEWSLETTER

FOR OUR FAMILIES AND CARERS IN BLACKBURN WITH DARWEN

December 2024

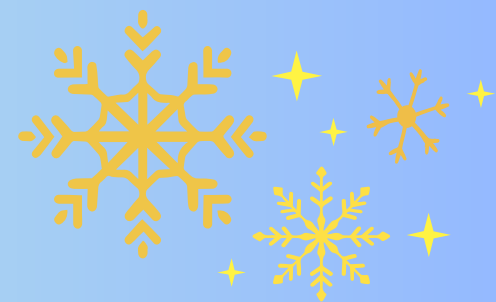


This newsletter will provide you with a regular round up of the partnership work being done to deliver SEND services in Blackburn with Darwen and keep you updated on SEND events and activities being held within the Borough.

We hope you find it useful and informative.

In this issue you can read about:

- A message from Parents in Partnership and the AGM on the 12th December 2024.
- How to be involved in shaping the New Parent Carer Forum in Blackburn with Darwen
- Spotlight on the DLD Team in the SEND Support Service at BwD Council.
- BwD Young People's Service SEND Inclusion Project



You are invited to our

AGM

10th Anniversary

Christmas Celebration  
Leaving Party!



**WHERE:** Harrison Centre, Blackburn  
College, Alma Street, BB2 1DN

**DATE:** Thursday 12th December 2024

**TIME:** 10am arrival for 10.30am start



**\*Christmas Crafts\***

**\*Information booth\* Free Raffle\* \*Meet Laura from  
Contact\***

**\*Lunch included\***

**Any Queries? Contact us on [bwdpip1@gmail.com](mailto:bwdpip1@gmail.com)  
or ring 07923252483**



# Message from BwD Parents in Partnership

## Letter from Christina

If you are a member of Parents in Partnership, you may have seen our recent email with the news that myself, Janet and Elaine are stepping back from the parent carer forum.

Members will be getting their Christmas Card and our letter in the next week or so, so keep an eye out for it in the post!

Laura Burling from Contact is working hard to find any parents who may be interested in finding out more about the parent carer forum, see Laura's message in this newsletter.

Laura will be at our AGM/10th Anniversary/Leaving Do on **Thursday 12th December**, details on the flyer below. Laura will be available to answer any questions after her presentation.

If you are unable to make it on the day, but would like to find out more, please contact Laura using the contact details on the next page.

There is no need to book for the event, but we would appreciate it if you could drop us a line on [bwdpip1@gmail.com](mailto:bwdpip1@gmail.com) if you are intending to come, just to help with numbers for catering.

# Be a Part of Shaping the New Parent Carer Forum in Blackburn with Darwen!



As the incredible work of Blackburn with Darwen Parents in Partnership comes to a close, we're reaching out to you—our community of dedicated parent carers—to help us take the next step forward. A new parent carer forum is on the horizon, and we're excited to bring together a team of passionate, engaged parents to help us shape it from the ground up.

Are you a parent carer interested in making a difference? Do you want to ensure our new forum truly reflects the needs, voices, and experiences of families like yours? This is a unique opportunity to join the forum's starter steering group, where you'll be able to contribute to decisions, share insights, and work alongside others to support and advocate for our community.

No previous experience is necessary—just a desire to make a positive impact and a few hours a month. We'll provide all the support and information you need, so you'll feel confident and empowered as a member of the team.

## **Interested? Have questions?**

Simply reach out to Laura Burling at [Laura@co-designedsolutions.co.uk](mailto:Laura@co-designedsolutions.co.uk) to arrange a chat about what's involved and how you could contribute.



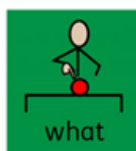
# SEND Support Service:

## Developmental Language Disorder and Specific Learning Difficulties Team



### Who are we?

- The Developmental Language Disorder & Specific Learning Difficulties Team are part of Blackburn with Darwen's wider SEND Support Service.
- The DLD team are made up of a Lead Teacher, three advisory teachers, a speech and language therapist and five specialist SEND Practitioners.
- The SpLD team are made up of one advisory teacher and one specialist SEND practitioner.



### What do we use?

- Specialist language and cognition assessments which assess skills across all areas of language and learning.
- Targeted bespoke, 'in house' or published intervention programmes suitable for each different key stage from Early Years to Key Stage 4 all of which are based on evidence from research.

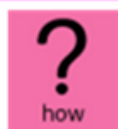


We work in nurseries, Family Hubs, primary schools, secondary schools, the Pupil Referral Unit, Blackburn College across BwD.



### What do we do?

- The **DLD team** carry out specialist assessment with children and young people from nursery up to post 16 provision.
- The **SpLD team** carry out specialist assessment with pupils from Year 2 to Year 11 to identify needs and strengths (not diagnosis).
- We help children and young people who are finding it difficult to:
  - Use and retain/recall vocabulary.
  - Join words together in a sentence or use long sentences.
  - Understand what people say.
  - Speak clearly so that everyone understands them.
  - Read with fluency.
  - Understand maths.
- The advisory teachers provide advice and recommendations for individual children and young people based on assessments and observations.
- The DLD team provide written reports to the Education, Health & Care Plan panel.
- We work closely with Speech and Language Therapy colleagues from the National Health and Educational Psychology Services.
- We deliver the primary and secondary Elklan courses to staff from schools across BwD.
- We provide bespoke training packages to staff in educational settings.
- We deliver an online course for families of children and young people with DLD called 'DLD Together' which helps them understand their child's needs.
- We participate in local authority research.



### How do you contact or refer a child or young person into the DLD or SpLD Team?

Any educational setting can send a request for DLD or SpLD involvement using the SEND Support referral and consent forms to [Epsendss@blackburn.gov.uk](mailto:Epsendss@blackburn.gov.uk)



# Young People's Services

## YPS SEND Inclusion Project

YPS have provided a full week of activities during October half-term for Children and young people.

They have enjoyed a visit to Gulliver's World and carved spooky pumpkins. Children and Young People have also participated in a Youth Work Week workshop at Wensley Fold Children Centre working with 'We Are Noise' and the SEND Inclusion Team to support children and young people in creating pieces of artwork, songs, music and raps all linked to the topic 'Inclusion and Diversity' for National Youth Work beginning November 4th.

This was a fantastic opportunity for children and young people to visit the newly refurbished Wensley Fold Centre and learn new skills.

You can visit the [National Youth Agency Website](#) for further information on the work they do.



# SEND Youth Voice Forum Parent/Carer Survey



We want to create a SEND Youth Voice Forum in Blackburn with Darwen, we feel it is important in order to ensure that the views of children and young people in the borough are represented and heard.

We want to create an opportunity where young people have their voice and know that we are listening. We want to provide children and young people to have key influence in everything we do in Blackburn with Darwen.

The SEND Youth Voice Forum will allow children and young people to engage with decision makers, contribute to improving and developing SEND Services for children and young people.

We are launching our SEND Youth voice forum on the 23rd January 2025 and would like to gather parent carer views. Please can you complete the survey and share your views.







Come along to our  
Family Hub  
Christmas party!

***Family Hub Shadsworth***  
***Thursday 12th December***  
***2024 10:30am-12.00pm***

**A visit from some  
special elves**

**Decorate a Christmas  
biscuit**

**Make some magical  
reindeer food for Rudolph  
and his friends**

**Christmas sing along**

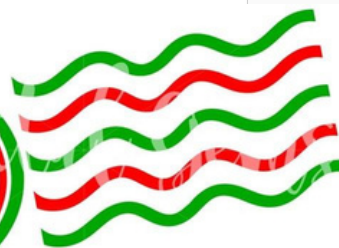
**Make a special letter to  
Father Christmas**

**Booking required**

**Please call the Family Hub to book your place on 01254 585000 and  
select the Family hub you would like to attend.**

**2 adults per child**

If you would like a 2 course Christmas dinner after the party, this is available to  
book for **£7 Adult, £5 child**. This will be served at 12pm . Please call Family  
Hub Shadsworth to book your meal. A vegetarian option is also available.





Come along to our  
Family Hub  
Christmas party!

***Family Hub Livesey***  
***Friday 13th December 2024***  
***10:00am-11.30am***

**A visit from some  
special elves**

**Make some magical  
reindeer food for Rudolph  
and his friends**

**Decorate a Christmas  
biscuit**

**Make a special letter to  
Father Christmas**

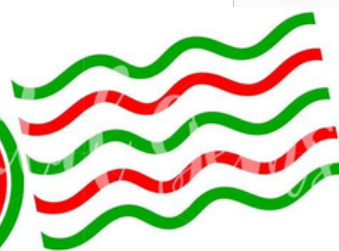
**Christmas sing along**

**Booking required**

**Please call the Family Hub to book your place on 01254 585000 and  
select the Family hub you would like to attend.**

***2 adults per child***

**If you would like a 2 course Christmas dinner after the party, this is available to  
book for **£7 Adult, £5 child**. This will be served at 12pm. Please call Family Hub  
Livesey to book your meal. Vegetarian option available.**







# PATH

**CHILDREN & YOUNG PEOPLE**

**Peer Advice to Transform Health & wellbeing**

**The aim of this Parent support group is to help parents, families and carers whose children and young people are experiencing emotional or mental health problems.**

Anxiety

Low mood & Depression

Self-harm

Eating Disorders

Sleep Problems

Suicidal Thoughts

Obsessions/Compulsions



We are looking to set up a series of parent support groups in the Blackburn with Darwen area and would welcome your views and comments to help shape the service.

**There is support for everyone**

Simply scan the QR code or visit the link to be a part of something special in the coming months.

<https://tinyurl.com/3bx92y8b>



**SCAN ME**

 **GROUP**  
**PATH@CANW**

[www.facebook.com/groups/p.a.t.h.canw/](https://www.facebook.com/groups/p.a.t.h.canw/)

Registered Charity No: 222533

# IGNITE/Diversity SEND Sessions


We are excited to introduce our exciting SEND sessions designed to create enriching experiences for young people aged 8-21 with diverse abilities.

 When: Sundays (ages 8-21)

 Time: 2:00pm-6:00pm

 Location: Blackburn Youth Zone

 When: Mondays (ages 11-16)

 Time: 3:30pm-6:00pm

 Location: Blackburn Youth Zone

Further details on the sessions are detailed on the following pages.

If you would like your child to attend these sessions then please send an email to [sajida.sidat@imocharity.org](mailto:sajida.sidat@imocharity.org) or alternatively, you can call Sajida Sidat on 07541 938431.

Spaces are limited, so don't miss out on this fantastic opportunity. Join us for a journey of growth, friendship, and discovery!

If you have any questions or need more information, please feel free to reach out to the above contact details.

We look forward to welcoming your child to our SEND sessions and creating unforgettable moments together!

# IGNITE/Diversity SEND Sessions

Within our IGNITE/Diversity provision, we are committed to providing a safe, inclusive, and enjoyable environment for young people with special educational needs and disabilities. Our sessions are tailored to meet the unique needs of each young person whilst fostering personal growth, friendship, and fun!

## What's in Store for Your Child?

✨ **Exciting Activities:** Our sessions feature a wide range of activities, from arts and crafts to sports, baking to dance as well as tournaments. We believe in the power of play and exploration to build confidence and create lasting memories.

🍴 **Delicious Food:** Nutritious meals and snacks are provided to keep your child energised and ready for a day of fun. We cater to various dietary requirements, ensuring every young person's needs are met.

🌟 **Life Skills Projects:** Our curriculum includes engaging life skills courses designed to help young people develop essential skills for independence and daily living. From communication and social skills to practical activities, we offer a holistic approach to personal development.

## Why Choose Us?

✅ **Inclusive Environment:** We celebrate diversity and provide an inclusive space where every young person can thrive.

🤝 **Experienced Staff:** Our dedicated team of professionals are trained to provide individualised support and care.

👥 **Community Building:** We believe in building a supportive community where young people and families can connect, share experiences, and grow together.

🎉 **Fun and Learning:** We blend fun activities with educational opportunities to ensure all young people have a well-rounded experience.



# IGNITE Diversity

> SPECIAL EDUCATIONAL  
NEEDS & DISABILITIES

- ✓ Inclusive Environment
- ✓ Experienced Staff
- ✓ Community Building
- ✓ Fun and Learning



**EXCITING  
ACTIVITIES**



**DELICIOUS  
FOOD**



**LIFE SKILLS  
PROJECTS**

AGE  
**8-21**  
YEARS

**SUNDAYS  
2 PM - 6 PM**

AGE  
**11-16**  
YEARS

**MONDAYS  
3 PM - 6 PM**

JOIN US FOR A JOURNEY OF GROWTH,  
FRIENDSHIP AND DISCOVERY!



**LIMITED  
PLACES.  
APPLY  
NOW.**



BLACKBURN YOUTH ZONE, JUBLEE ST, BLACKBURN, BB1 1EP

IF YOU WOULD LIKE YOUR CHILD TO ATTEND THESE SESSIONS THEN PLEASE CONTACT:



Sajida Sidat  
07541 938431 / 01254 781310  
sajida.sidat@imocharity.org

@imocharity

www.imocharity.org



# Friends of the Local Offer

Would you like to make things better for Children and Young People aged 0-25 with Special Educational Needs and/or Disabilities (SEND) in Blackburn with Darwen?

If so, we would love to hear from you!

Our Friends of the Local offer Group is a friendly group who meet once a month to find ways to help families to help themselves by recommending and making improvements to information, guidance and the services available for children and families locally.

Meetings take place at one of the BwD Family Hubs and include a brew and biscuits.

The group:

- Make improvements to the Blackburn with Darwen's Local Offer website
  - Make the information available more family friendly
  - Provide advice to professionals on sharing information
- Help develop and review important strategies for the borough

If you might be interesting in getting involved, please email us at [local.offer@blackburn.gov.uk](mailto:local.offer@blackburn.gov.uk)



**We would love to  
hear from you!**

# Feedback

**We want to hear your views on our newsletter**

**Please let us know what you would like to see in future editions by emailing  
[local.offer@blackburn.gov.uk](mailto:local.offer@blackburn.gov.uk)**



**If you would prefer to receive this newsletter in a different format, please  
email [local.offer@blackburn.gov.uk](mailto:local.offer@blackburn.gov.uk)**

**This Newsletter is produced by Blackburn with Darwen Borough Council.**

**The newsletter cannot accept any responsibility for products and services advertised within it.**

**The views expressed in the articles do not necessarily represent those of Blackburn with  
Darwen Council.**