

Keyboards: Level 1

Course Evaluation Criteria

Y3: We would expect all children in Y3 to attain statements 1-4. If any of statements 5-10 are attained, those pupils are exceeding expectations.

Y4: We would expect all children in Y4 to attain statements 1-5. If any of statements 6-10 are attained, those pupils are exceeding expectations.

Y5: We would expect all children in Y5 to attain statements 1-7. If any of statements 8-10 are attained, those pupils are exceeding expectations.

Y6: We would expect all children in Y6 to attain statements 1-8. If statements 9 or 10 are attained, those pupils are exceeding expectations.

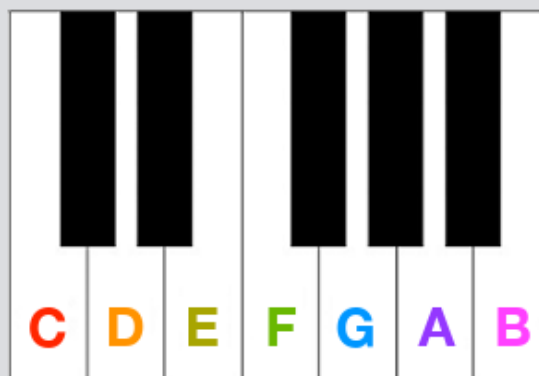
1. Pupils can find and play a C, D and E notes with their right hand.
2. Pupils can play from C to G with their left hand.
3. Pupils know where the time signature is placed on a piece of notated music.
4. Pupils can play a piece of music while keeping a steady pulse.
5. Pupils know where all the notes are on a treble clef stave.
6. Pupils can switch between playing crotchets, minims and semibreves confidently.
7. Pupils know that black keys produce sharp and flat notes.
8. Pupils can find and name the black keys on a keyboard.
9. Pupils can play a piece of music fluently using the correct fingering.
10. Pupils can notate their own piece of music and play it.

Course Overview




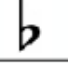
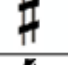

Course overview: This is an introduction to playing keyboards. Pupils will improve their keyboard skills gaining confidence in reading music, performing and improvising. By working through several exercises looking at notation, timing and rhythm pupils will learn how to read music in the treble and bass clef and perform a variety of pieces throughout the course.

Learning Outcomes for the course: Learn how to read music in the treble and bass clef, focusing on fingering and hand position, recognise notes on the keyboard and be able to play basic songs with two hands. Pupils will be able to recognise notes and gain confidence in performing basic songs with two hands or as a duo.

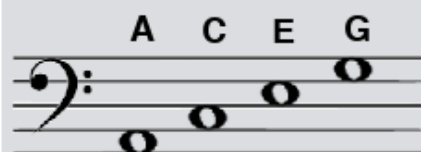
Keyboards Diagram



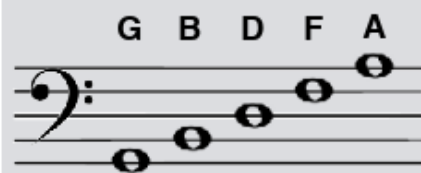
Vocabulary and Symbols

	<i>Crotchet (1 Beat)</i>
	<i>Minim (2 Beats)</i>
	<i>Semibreve (4 Beats)</i>
<i>p</i>	<i>Piano (Quiet)</i>
<i>f</i>	<i>Forte (Loud)</i>
	<i>Flat</i>
	<i>Sharp</i>
	<i>4 Beats in a bar</i>

Bass Clef



**Grass
Eat
Cows
All**



**America
From
Dogs
Big
Great**

Treble Clef



**E
C
A
F**



**Fast
Drives
Bus
Green
Every**