



St Andrew's Academy Family Update Newsletter

Spring Term 1

10th January 2025



Head Teacher's Welcome

Happy New year! We hope you had an exceptional Christmas and wonderful New Year. It has been a very impressive first week back, picking up where we left off in 2024 and starting 2025 with purpose and a love of learning. The sub zero temperatures and icy conditions have in no way hindered the delivery of our curriculum, with classes still benefitting from all enrichment activities and off-site learning. Indeed, it has been a great opportunity to further develop life skills and independence in safely dealing with the cold weather and the changes and risks it may bring. 2025 promises to be a landmark year for St Andrew's in conversation with Derby City Council and Shaw Education Trust to further develop our site and enhance our provision. St Andrew' is recognised city-wide as a progressive SEND offer with demand for places far outstripping supply. I very much look forward to sharing exciting upcoming developments once they are finalised. Wishing you a warm and wonderful weekend!

David Braybrooke - Headteacher

Key Stage 3

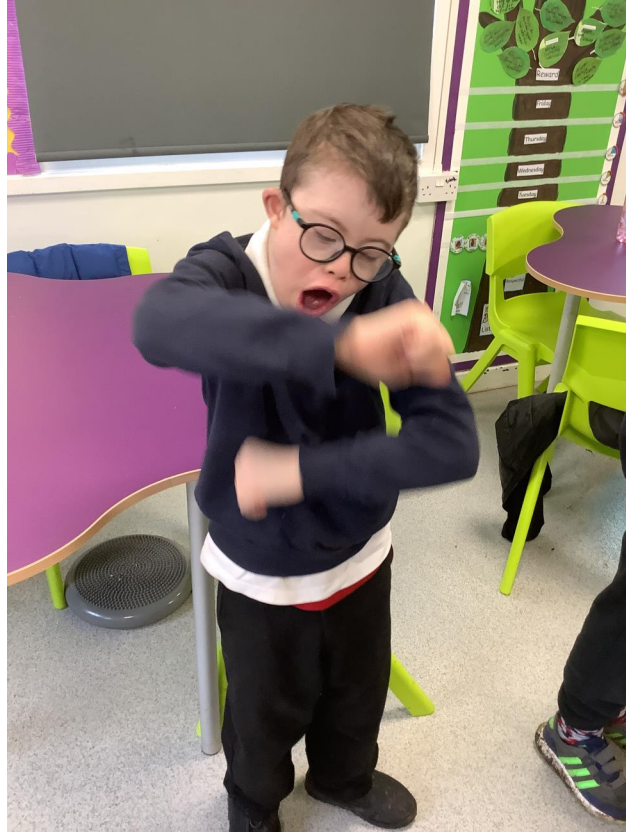
Happy New Year everyone. This half term the students in Barra will explore and gain knowledge of different food groups, preparing and presenting fruit and vegetables. We will also be working on and talking about different materials and making 3D models.

For literacy, we will be reading Georges' Marvellous Medicine to recognize what characters and settings are in fictional stories. We started listening to this story this week and the students engaged well and enjoyed it.



1 - Looking at different materials.





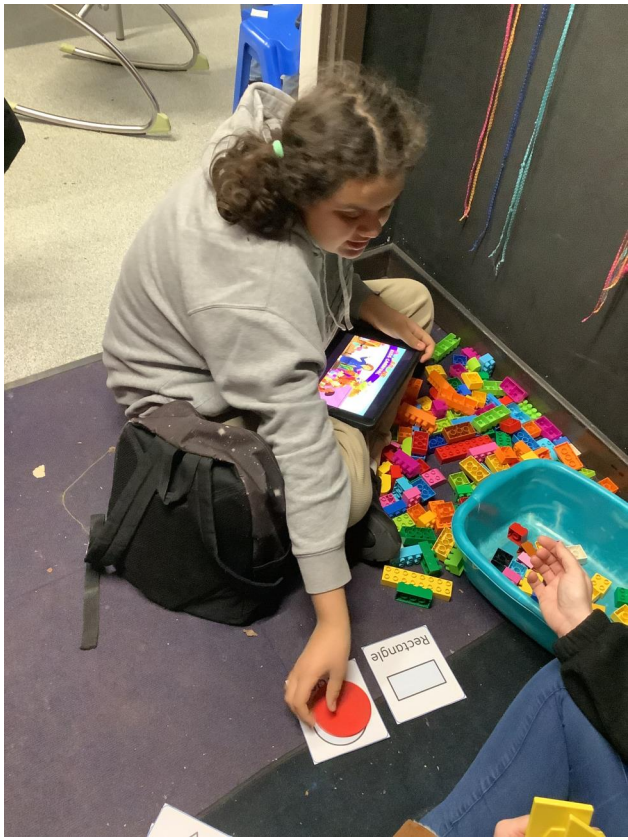
2 - Oliver doing some dancing in P.E



The Glens

Mull class have had a good welcome back week, and enjoyed exploring their new topic for this term. They have been working on shapes in maths and investigating 2D shapes. In computing students have explored electrical items with switches.







Key Stage 4



Handwritten words and phrases on the leaves of the tree:

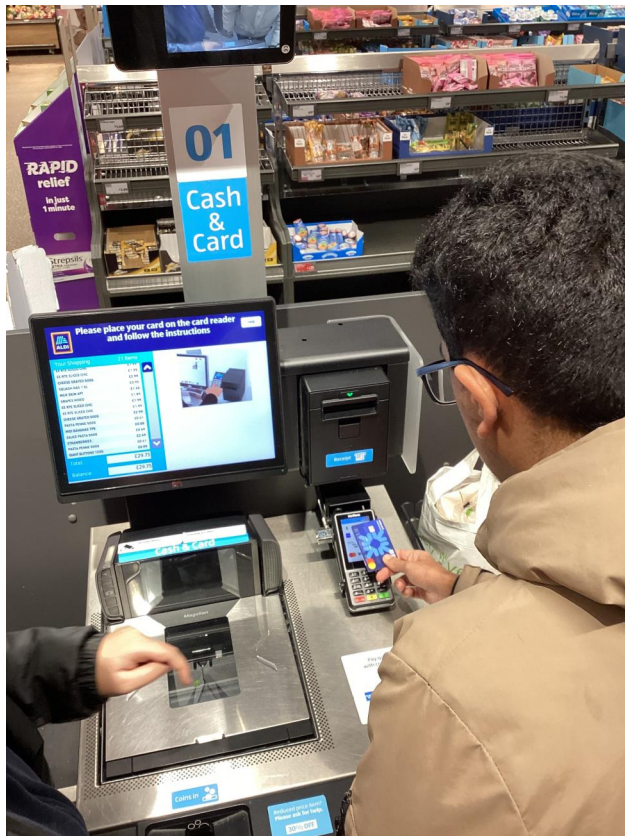
- Help
- Empathy
- Trust
- Share
- Listen
- Be nice
- Respect
- Love
- Kindness
- Patience
- Gratitude
- Forgiveness
- Humility
- Compassion
- Generosity
- Integrity
- Perseverance
- Optimism
- Resilience
- Self-awareness
- Emotional regulation
- Problem-solving
- Communication
- Teamwork
- Leadership
- Accountability
- Empowerment
- Collaboration
- Innovation
- Adaptability
- Flexibility
- Open-mindedness
- Curiosity
- Enthusiasm
- Passion
- Dedication
- Commitment
- Hard work
- Perseverance
- Resilience
- Optimism
- Self-awareness
- Emotional regulation
- Problem-solving
- Communication
- Teamwork
- Leadership
- Accountability
- Empowerment
- Collaboration
- Innovation
- Adaptability
- Flexibility
- Open-mindedness
- Curiosity
- Enthusiasm
- Passion
- Dedication
- Commitment
- Hard work

KS4 have started the new year with a bang. Students have been working on their Learning for Life and independence skills. The Stronsay boys were given a shopping list and the task of choosing the cheapest items as independently as possible. Lee and Talha were really confident in navigating around the shop, finding a shop assistant to ask any questions they had and using their problem solving skills to buy alternative ingredients if a certain one was out of stock. They used the self checkouts independently to scan all of the shopping, pack their shopping into bags and then use a card to pay. Well done team Stronsay.

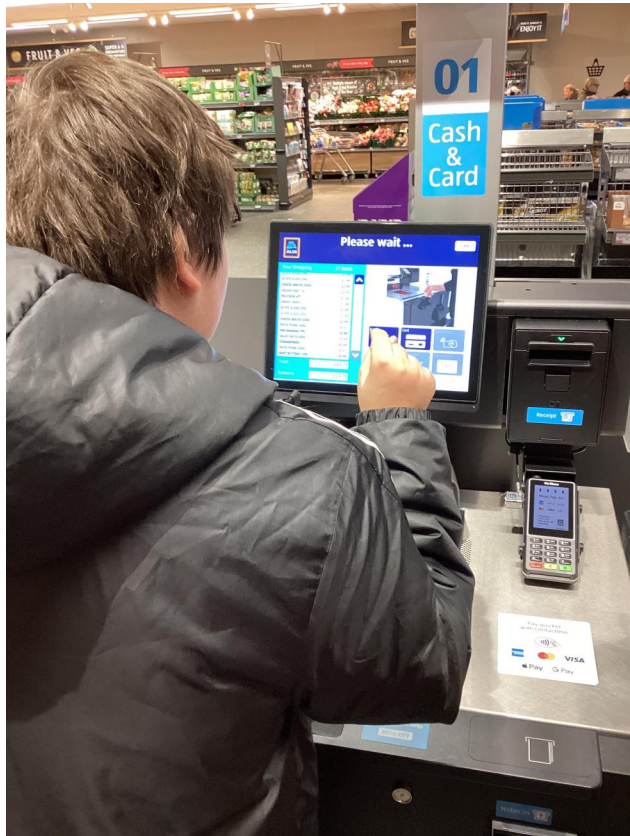














The Highlands



Happy New Year and a big welcome back from everyone at the Highlands! Students in Jura, Iona and Taransay are very happy to be back at school. Taransay and Iona classes are beginning a new topic: Through the decades! This week we have been learning all about the 1920's. Students have enjoyed listening to 1920's music and have been making classic food from the decade such as pineapple upside down cake. We have been learning about 20's artist Clarice Cliff and recreating her pottery by cutting and sticking layers of card. Jura have enjoyed some winter walks during their outdoor ed sessions. They have been feeding a variety of birds and identifying different woodland animals.





1920

U: To design a 1920's piece of Clarice Cliff pottery

Demonstration
 Direct Modeling
 Direct Prompts
 Indirect Prompts
 Assisted Reading
 Independence

7/1/25

U: To match objects from the decade the 1920's

food	car	fashion

Demonstration
 Direct Modeling
 Direct Prompts
 Indirect Prompts
 Assisted Reading
 Independence



Key Stage 5

A message from the Campus students:

Hello welcome back, we hope you had a wonderful time off. We hope you had a good time resting and relaxing so we are ready to come back to school to start the new year. We want to share that we are making New Years resolutions for 2025. These are things we want to do or change this year and we hope that we can achieve these resolutions before the year ends. During RSE this term we are learning about adolescence and how our body changes during puberty. We are also learning about reproduction and why and how it is important to be safe.

A group of students started a 6 week work placement with DANCOP at the University of Derby this week as part of a Supported Insight scheme. The students had a tour of the building and undertook some tasks in the library this week. Next week the students will be starting to support a clothing swap shop. The students were very attentive and showed some brilliant confidence in working with new people. We are excited to see what the future sessions will bring!





Occupational Therapy



Campus had a great first session back after Christmas. The students couldn't wait to explore and try out all the sensory integration equipment. The climbing wall was a big hit as well as the squeeze machine. Students were getting lots of proprioception feedback through the whole session.







SEN UNTD

First Match SEN United Ladies vs Albert Village Ladies FC

NEXT MATCH

CHARITY FUNDRAISER
WEDNESDAY 15TH JANUARY 2025
8:00PM KICK-OFF
DERBY RACECOURSE

 **VS** 

SEN UNITED LADIES **ASTON VILLAGE FC**

RAISING MONEY FOR:
DOWN'S SYNDROME DERBY

#WeAreSEN
@bookmark
LEAD IT Services
TAG
LU LEISURE UNITED
KLE
move more Derby
GUILT BASH DESIGN
ALC

Next Match SEN United vs Sporting Wednesday FC

NEXT MATCH

CHARITY FUNDRAISER
FRIDAY 24TH JANUARY 2025
8:00PM KICK-OFF
ILKESTON TOWN FOOTBALL CLUB

SEN UNITED VS **SPORTING WEDNESDAY FC**

RAISING MONEY FOR:
DOWN'S SYNDROME DERBY

#WeAreSEN
#bookmark
LEAD IT SENDERS
TAG
LEISURE UNITED
move more Derby
GUILF BLES DESIGN
AFC

Contact Us

St Andrew's Academy

St Andrew's View

Breadsall Hilltop

Derby

DE21 4EW

Tel: (01332) 832746

Email: standrews.admin@sas.set.org