

## The Train Ride



### Literacy

We will be writing sentences and using adjectives. We will read and follow instructions.

### Communication & Language

We will be exploring the meaning and sounds of new words.

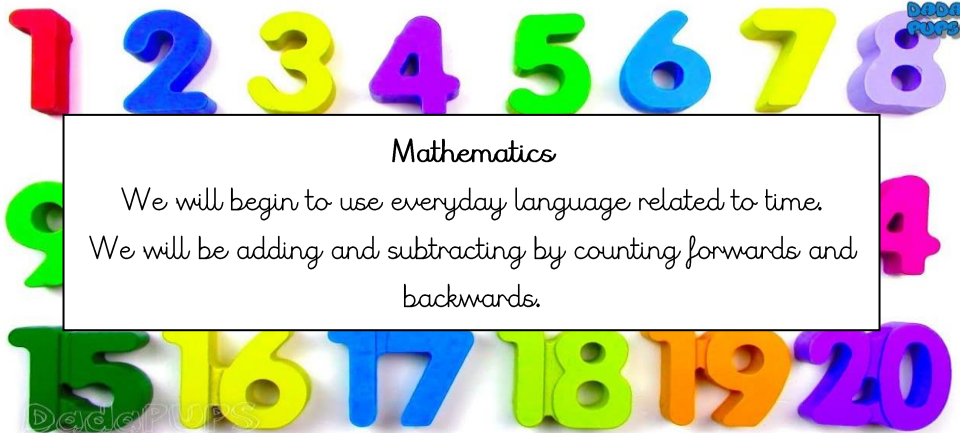
### Physical Development

We will use tools and malleable materials safely and with increasing control.



### PSED

We will be sensitive to others' needs and feelings.

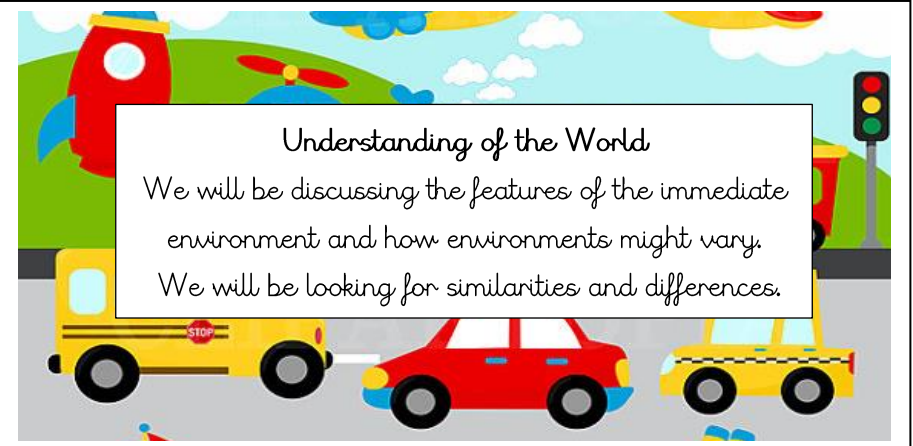


### Mathematics

We will begin to use everyday language related to time. We will be adding and subtracting by counting forwards and backwards.

### Understanding of the World

We will be discussing the features of the immediate environment and how environments might vary. We will be looking for similarities and differences.



### How you can help



Please encourage your child to be independent. Regular reading - either listening to or reading with your child each night will help to build their fluency and enjoyment for reading.

### Collective Worship

Whole school Collective Worship is on Wednesday and Friday. EYFS/KSI Collective Worship is on Monday. This term the value is **Forgiveness.**



### Expressive Arts & Design



We will be using a variety of materials, tools and techniques.

We will experiment with colour, design, texture, form and function.

