

## Literacy

Non - Fiction: Revision of a range of genres linked to Kensuke's Kingdom or Wonder

Narrative: Kensuke's Kingdom and Wonder

Spelling, Punctuation and Grammar: Revision

Poetry: Linked to Extreme Earth.

## Spanish

To learn about and buy drinks, express likes and dislikes.

## Computing Networks

To find out more about how computer networks work, learn how they can provide multiple services, and explore the opportunities they offer for communication and collaboration.

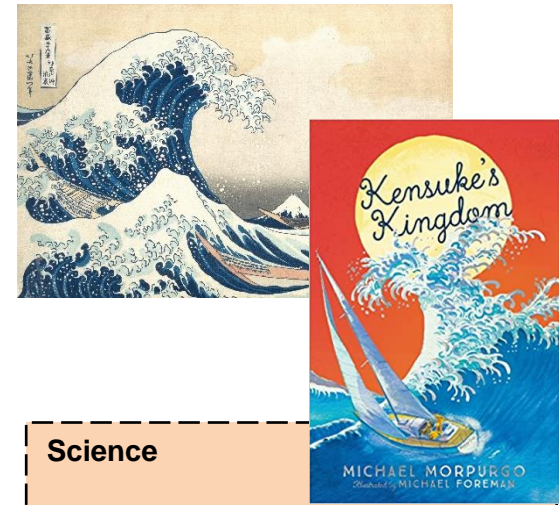
## Collective Worship

Whole school Collective Worship will be on a Friday and KS2 Collective Worship on Tuesdays, they will focus on our value.

## Art Hokusai

To review and reflect on a range of works by the artist Hokusai.

To use a variety of methods and approaches to communicate observations, ideas and feelings in a painting.



## Science

### Light

Discuss different types of material e.g. opaque, transparent and translucent.

To explain how shadows are formed.

## Geography Extreme Earth

Explore extreme weathers and natural disasters

Describe and understand key aspects of physical geography, including: climate zones, biomes and vegetation belts, rivers, mountains, volcanoes and earthquakes, and the water cycle.

Use maps, atlases, globes and digital/computer mapping to locate countries and describe features studied

# Extreme Earth

Year 6

Term 5 - 2021

Miss Stott and Mrs Gerrish

## RE

Beliefs and Meaning

Is anything ever eternal?

## Music Extreme Earth

Improvise and compose music for a range of purposes using the inter-related dimensions of music.

Create a natural disaster musically.

Use and understand staff and other musical notations.

## Values

Our value this term is Service – how can we serve others and make the world a better place?

## PSHCE

Being my Best.  
Caring for the Environment.

## PE

### Swimming

To swim with more fluency and improve stroke technique. Lifesaving skills.

### Rounders

To learn how to bowl and throw with increased accuracy and speed.

## Maths

Statistics: line graphs, circles, pie charts, finding the mean.

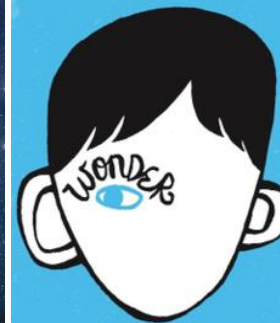
Properties of shape: Using a protractor, angles and lines, sum of angles in triangles, quadrilaterals, regular polygons, 3D shapes.

Mental Maths focus: number bonds to 20, 100, 1000.

“When given the choice  
between being right and being  
kind, choose kind.”

- Wonder, the movie

#BeKind



## How can you help?

Please continue to encourage your children to complete all set homework.

We also need children to further develop their fluency in their times tables.

Regular reading – either listening to or reading with your child each night will continue to build their fluency and enjoyment for reading.