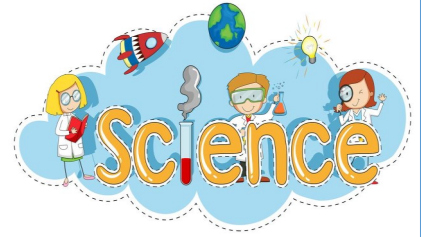


St. Anne's Catholic Primary School

Nursery Knowledge Organiser—

Sparkling Stars

'We are Scientists'



The 'We are Scientists' theme is about ...

Spring, Life Cycles and Growth

Communication & Language

We will continue to learn new vocabulary linking to our topic and be able to use the new vocabulary throughout the day.

We will continue to ask questions and answer questions expanding our ideas. We will use longer sentences to communicate our thoughts and ideas.

We will continue to listen and learn new stories and join in with rhymes and songs. We will talk about familiar stories and be able to tell a long story.

Physical Development

Team building skills:

Negotiate space and obstacles safely, using our individual physical skills.

We will take part in group activities.

We will continue to develop our fine motor skills .

Use a comfortable grip with good control when holding pens and pencils.

Personal, Social and Emotional Development

We will continue to play with our friends, listening to each others ideas and extending our play.

We will solutions to conflicts, suggesting other ideas and develop appropriate ways of being assertive.

We will continue to understand how others may be feeling and suggest ways to help them.

We will continue to increasingly follow rules, understanding why they are important.

Maths

We will continue to solve mathematical problems with numbers.

We will continue to explore number composition.

We will begin to learn the names of 3D shapes.

We will continue to describe a sequence of using words such as 'first' and 'then'.

We will begin to discuss routes and locations in more details, using positional language .

Understanding the World

We will continue to explore the changing seasons and use our senses to explore the natural world around us.

We will plant seeds and care fro the growing plants.

We will talk about what we see, using a wider vocabulary.

We will explore the life cycles of different animals—care for ducklings from when they are born until they are 10 days old.

Expressive Arts & Design

We will explore the Artist Georgia o'Keefe, and will paint our own observational paintings of Spring flowers.

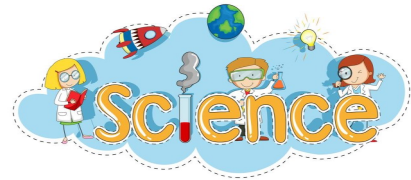
We will continue to explore and use different materials to create

We will continue exploring our body movements in response to the tempo and beat of the music.



St. Anne's Catholic Primary School

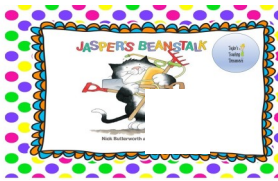
**Nursery Knowledge Organiser—
Sparkling Stars**



RE

We will be exploring our next branch in our new curriculum, 'To the ends of the Earth'. The pupils will learn about the festival of Pentecost and the coming of the Holy Spirit.

Literacy Core Texts:



Nursery Rhymes/Songs— Spring Song, Daffodils Finger Action Rhyme, See the bunnies sleeping, Ladybirds subtraction number rhyme, Here is the beehive

Phonics

We will continue to work through Phase 2 letters and sounds., we will continue to learn how to form the letters.

Key Vocabulary

Spring—When it starts to get warmer.

Life Cycle—a series of stages a living thing goes through.

Hatch—to come out of an egg/chrysalis.

Grow—to increase in size.

Life cycle of a plant: plant, seed, soil, water, sun, stem, leaves, petals, pollen.

Stages of a frog's life Cycle— frog spawn, tadpole, froglet, frog.

Stages of a Caterpillar life cycle— egg, caterpillar, cocoon, butterfly.

Days of the week.

Positional language: Over, under.

Key dates for this half-term

Term dates: Monday 15th April —Friday 24th May.

Bank Holidays: Monday 6th May.

Walk to School Week:

Monday 20th —Friday, 24th May

PE Days— Monday, Tuesday and Friday

Homework— Bug Club Phonics

Let's try this at home

Look at and talk about changes in the environment during Spring, what can you see growing in your gardens and local environment.

Maybe you could plant a seed and watch it grow. .

Visit a local farm and see the new life that is being born.