

## St. Anne's Catholic Primary School

### Year 6 Knowledge Organiser

#### 'We are Scientists'

*"Loving God In All We Do."*



#### The 'We are Scientists' topic is about ...

In Science children will associate the brightness of a lamp or the volume of a buzzer with the number and voltage of cells used in the circuit. They will also compare and give reasons for variations in how components function, including the brightness of bulbs, the loudness of buzzers and the on/off position of switches.

In English they will look at the features of an explanation text, aiming to write effective explanations for a variety of inventions.

#### Prior learning

- Identify common appliances that run on electricity
- Construct a simple series electrical circuit, identifying and naming its basic parts, including cells, wires, bulbs, switches and buzzers
- Identify whether or not a lamp will light in a simple series circuit, based on whether or not the lamp is part of a complete loop with a battery
- Recognise that a switch opens and closes a circuit and associate this with whether or not a lamp lights in a simple series circuit
- Recognise some common conductors and insulators, and associate metals with being good conductors.

#### Our current learning

- Associate the brightness of a lamp or the volume of a buzzer with the number and voltage of cells used in the circuit
- Compare and give reasons for variations in how components function, including the brightness of bulbs, the loudness of buzzers and the on/off position of switches
- Use recognised symbols when representing a simple circuit in a diagram

#### Vocabulary

##### **RE**

Holy Spirit, witnesses, martyrs, courage, truth, inspiration, Good News.

Five Pillars of faith, shahad, salah, zaka, sawm, hajj.

##### **Computing**

Bytes, device, gigabyte, graphics, hard drive, kilobytes, megabytes, memory storage, operating system, overlay, processor, RAM, reverb, ROM.

##### **Geography**

Lake District, lake, mountain, Ordnance map, grid reference, human geography, physical features, grid reference, topographical features.

##### **MFL**

Faire, marche, adorer, detester, aller, a droite, a gauche, tout droit, vite, lentement, C'est quel sport? Tu aimes le sport?

##### **Music**

Baroque, bass clef, canons, fugue, ground bass, opera, oratorio, polyphonic.

##### **PSHE**

Economic wellbeing, money, banking, bank account.

##### **Science**

Circuit, cells, bulb, lamp, motors, buzzers, switch, energy source, battery, conductor, insulator, symbols,



## St. Anne's Catholic Primary School

### Year Knowledge Organiser

#### 'We are Scientists'



#### RE

In RE we will be exploring the term 'witness' and what it means to be a witness to God. Children will aim to make links between scripture in the Bible and their own experiences of being a witness. We will also explore the religion of Islam, in particular the Five Pillars of Faith.

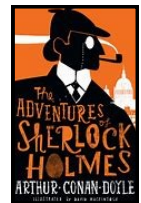
#### Wider curriculum learning

In addition to writing explanation texts in **English**, this term children will also explore the genre of detective fiction. Pupils will aim to recognise the conventions used in detective novels and use this to inform their own writing. **Maths** lessons will aim to consolidate knowledge, focusing particularly on shape, measure and number sequences. In **Geography** children will study the locality of the Lake District and use mapping skills to find out information. In **Computing** children will learn about the history of computers; from first radio plays, to computers which changed the world. Pupils will also think about future developments in computing. During **French** lessons children will become increasingly fluent in communicating both conversationally and in their written work. They will focus on French sports and the Olympics. In **PE** pupils will develop the skills needed for striking and fielding games. They will also attend weekly yoga sessions aiming to relax their mind and body. **PSHE** lessons will focus on money management this term, in particular what a bank is and how it works.

#### We are going to read a range of texts from

We will be reading a range of detective fiction, exploring the LoveReading4Kids website.

They will also have a chance to read a variety of explanation text examples.



#### Key dates for this half-term

**Term dates**— Monday 15th April —Friday 24th May.

SATs and Tower Wood meeting—16th April

Bank Holiday Monday 6th May.

SATs Week—Monday 13th—16th May

Tower Wood—22nd—24th May

**PE Days**— Every **Friday** afternoon (two sessions)