

We undertook some fieldwork around our school. Using a map and giving and following directions we had to locate some treasure!





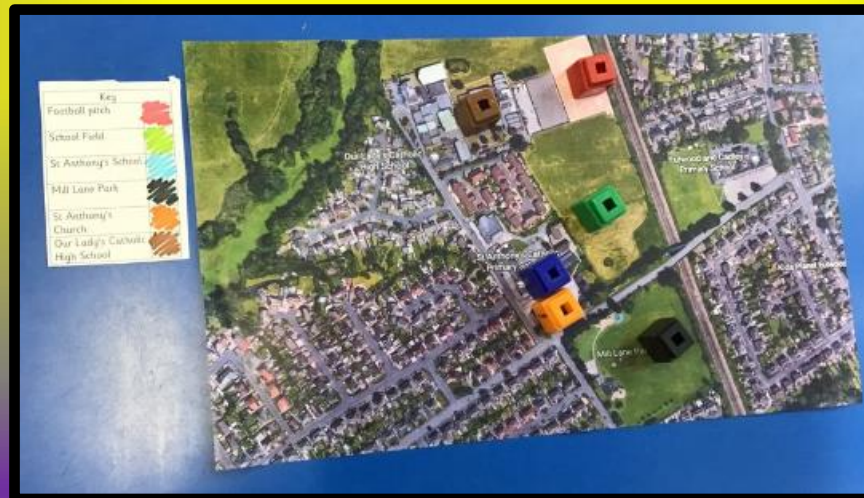
# Fieldwork around our school.







After looking at maps in our local area, we identified key buildings.

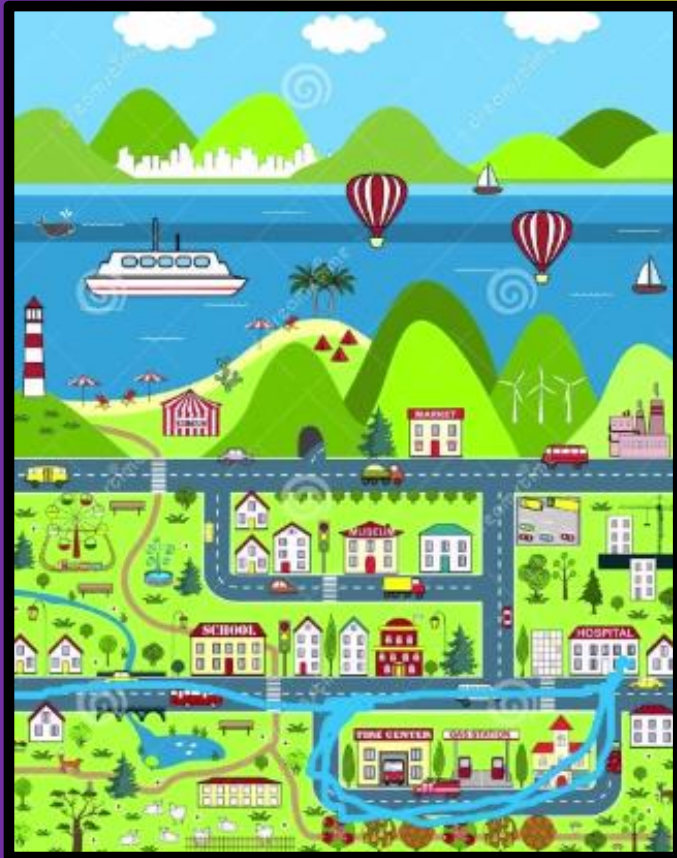


We have used Bee-bots to help us with our positional and directional language.



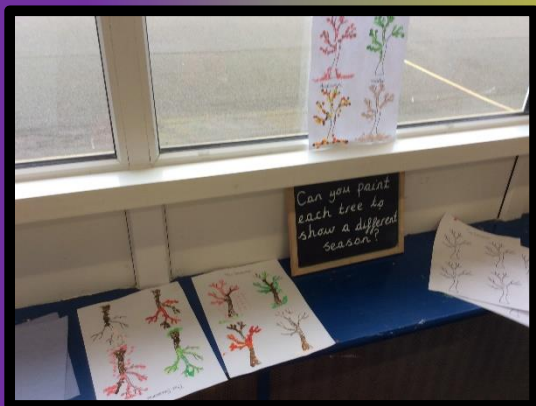
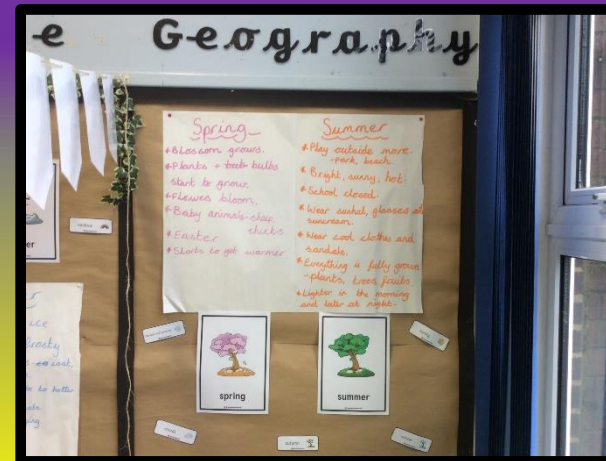
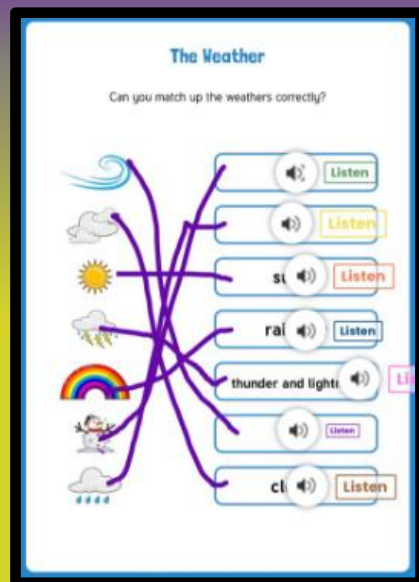
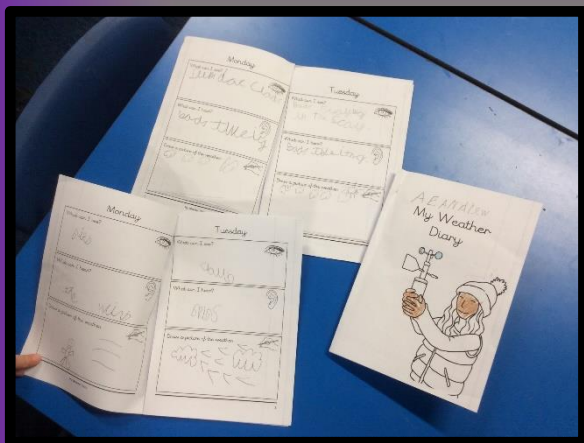


Digital maps have been used to mark routes and give directions to places.





# Learning about the seasons and weather.

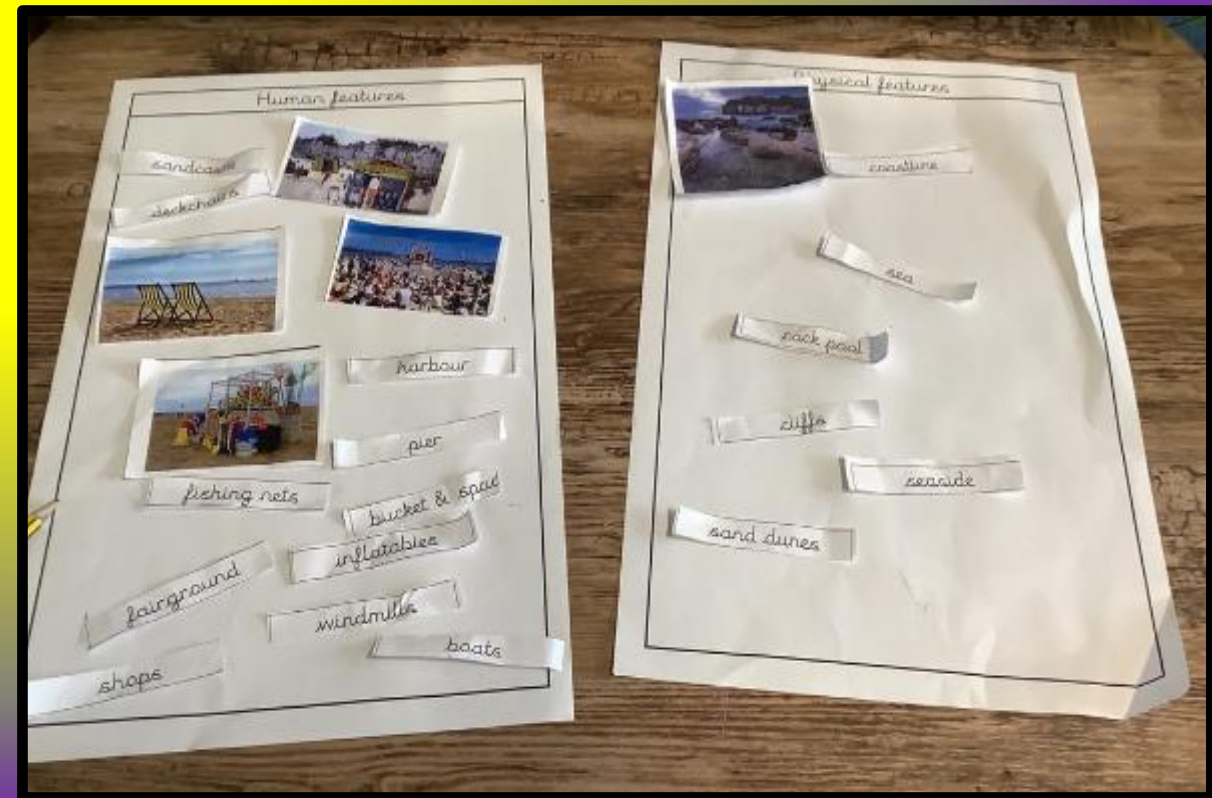


We record the weather in simple diaries; use technology to recognise and record the symbols for the different weather types; we have an observation station in our room and through 'Learning Zones' we continue to embed our learning about the seasons.

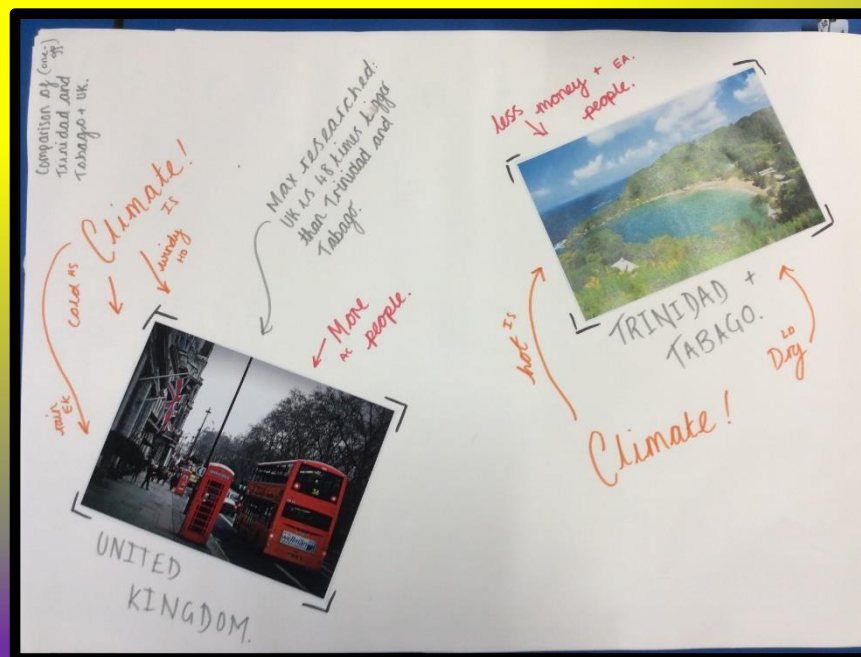
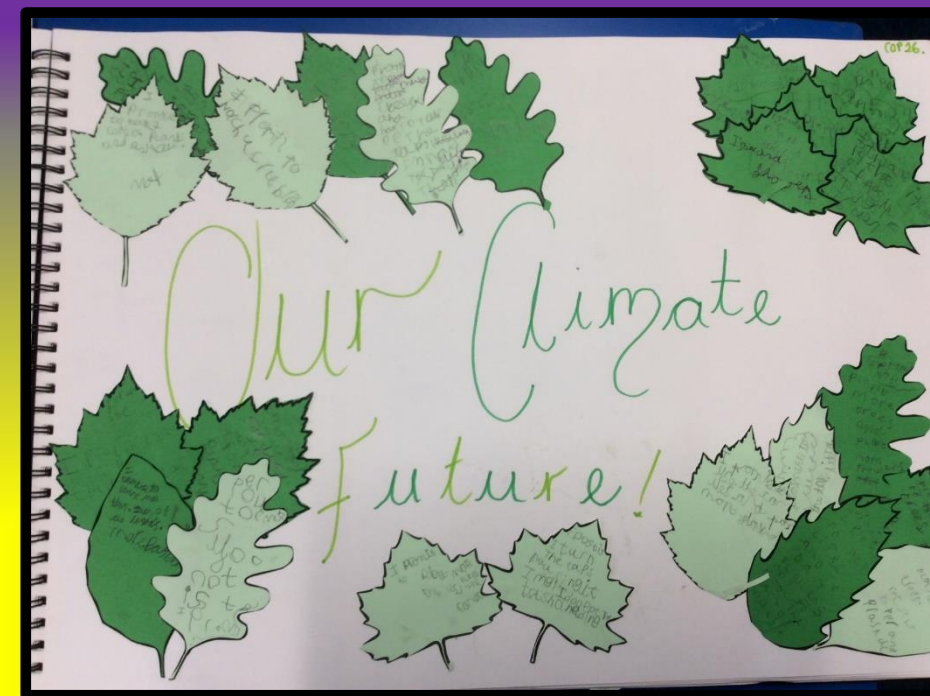
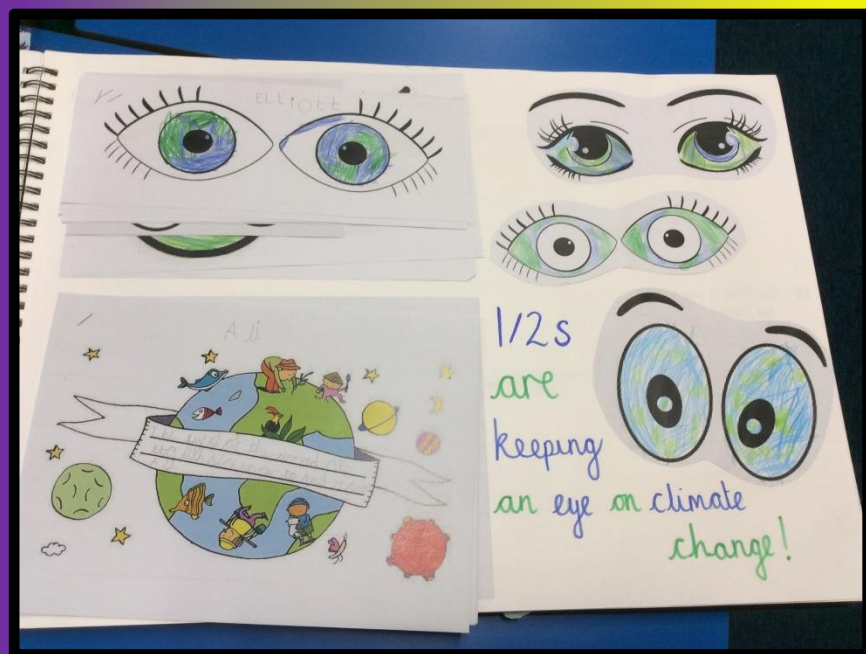




We use and show understanding of the vocabulary associated with human and physical geographical features.



Our climate change learning linked with the  
Fairtrade Fortnight theme  
'Choose the World You Want'





# Our classroom environments for 'Beside the Seaside' show the vocabulary we used and some tasks we completed.

