

# WEEKLY NEWSLETTER

## ST ANTHONY'S CATHOLIC PRIMARY SCHOOL

### WE ARE GOD'S WORK OF ART



ISSUE 14 | SUMMER TERM 2026 | SCHOOL NUMBER 01772 726621 |

#### **STAR OF THE WEEK AWARDS** **FRIDAY, 1<sup>st</sup> MAY, 2026**

Rec S	Mabel H			Rec T	Eliana S
1S	Teo J	1/2T	Olivia-Rose R	2A	Hugo M-D
3S	Eliza C	3/4T	Lucca F	4A	Evan J
5S	Charlie B	5/6T	Alice S	6A	Esme A

#### **HEADTEACHER AWARD**

George W	2A
----------	----

#### **CITIZEN AWARDS**

Hugo G	4A
George K	4A
Theo S	4A

[office@stanthonys.mecmat.org](mailto:office@stanthonys.mecmat.org)

#### **SCHOOL DAY**

School starts at 8.45am with doors opening from 8.40am

All children must be in class for 8.45am prompt in readiness for morning registration

School finishes at 3.15pm

#### **SCHOOL MEALS**

Week commencing  
4<sup>th</sup> May, 2026  
will be week 3 of the  
Spring/Summer menu

Thank you to the parents and grandparents who attended Tuesday's 5S class Mass. Next week we have 3/4T class Mass on Tuesday and 1S class Assembly on Wednesday. We hope that parents and grandparents are able to join us.

Well done to the children from our 4A class who have completed the first week of their two-week block of swimming lessons at Fulwood Leisure Centre. The children have shown great determination to do well and, more importantly, seem to be enjoying the lessons and are growing in confidence. It will be the turn of our 3/4T class from week beginning 11<sup>th</sup> May.

Clubs commence next week. Please can we ask that you notify the school office if your child is going to be absent from a club for any reason.

With May being the month of Mary, I will be inviting the children to pray the rosary with me at lunchtimes from next Tuesday – this is completely voluntary and children may choose to attend on whichever days they wish. Children may bring in rosary beads from home or are welcome to borrow some as required.

Please can we ask those parents whose children cycle to and from school for your support in stressing how important it is that they wear a cycle helmet at all times.

I hope that everyone has a lovely long bank holiday weekend and look forward to seeing the children back in school on Tuesday!

Mrs Barnes

### Advance Notice of Year 6 SATs

Our Year 6 children will be sitting their key stage 2 SATs each morning from Monday, 11th May to Thursday, 14<sup>th</sup> May inclusive. Please can we draw to your attention how important it is that all children be in school on time each day to avoid disruption to the children sitting their SATs. During SATs week, we are holding a Year 6 Breakfast Club from 8.15am and look forward to the children joining us. This club is an excellent opportunity for our Year 6 children to spend time relaxing with their friends prior to the tests.

### National Dinosaur Day Themed Lunch

We are having the following themed lunch on Thursday, 21<sup>st</sup> May. As usual, there is no need to book in advance, just let class know on the day and make the payment through your Arbor App, if applicable:-



There will also be the jacket potato option with a choice of fillings.

### Wednesday Word

Please see below a link to this week's 'Wednesday Word' Catholic resource for families:-  
<https://www.wednesdayword.org/school/index.htm>



### *Dates for your diary*

- ~~Summer Term begins~~ - Monday, 20<sup>th</sup> April
- ~~Yrs 5/6 Robinwood Trip~~ - Monday, 20<sup>th</sup> - Wednesday, 22<sup>nd</sup> April
- ~~Reception Vision Screening Checks~~ - Wednesday, 29<sup>th</sup> April
- ~~Bank Holiday Closure~~ - Monday, 4<sup>th</sup> May
- ~~Extra-curricular Before and After School Clubs begin~~ - Tuesday, 5<sup>th</sup> May
- ~~Year 6 Statutory Tests~~ - Monday, 11<sup>th</sup> - Thursday, 14<sup>th</sup> May inclusive Class
- ~~Reception/Year 6 Height and Weight Checks~~ - Monday, 18<sup>th</sup> May
- ~~FOSTA Own Clothes Day~~ - Friday, 22<sup>nd</sup> May
- ~~Half Term Break~~ - Monday, 25<sup>th</sup> May - Monday, 1<sup>st</sup> June
- ~~Inset Day (School Closed)~~ - Tuesday, 2<sup>nd</sup> June
- ~~Year 4 Multiplication Check Window~~ - Monday, 1<sup>st</sup> June - Friday, 12<sup>th</sup> June
- ~~Reception Trip to Smithills Farm~~ - Wednesday, 3<sup>rd</sup> June
- ~~Year 1 Phonics Screening Check~~ - week commencing 8<sup>th</sup> June
- ~~Year 6 Bikeability Training~~ - week commencing 15<sup>th</sup> June
- ~~Year 4 Sacrament of Holy Communion~~ - Sat/Sun, 20<sup>th</sup>/21<sup>st</sup> June
- ~~FOSTA Summer Fair~~ - Wednesday, 24<sup>th</sup> June - after school
- ~~Move Up Day~~ - Thursday, 2<sup>nd</sup> July
- ~~FOSTA Summer Discos~~ - Wednesday, 8<sup>th</sup> July
- ~~Extra-curricular Before and After School Clubs Finish~~ - Friday, 10<sup>th</sup> July
- ~~Year 6 Leavers' Productions~~ - Mon, 13<sup>th</sup> July - 6.00pm & Tue, 14<sup>th</sup> July - 1.45pm
- ~~Year 6 Leavers' Assembly~~ - Thursday, 16<sup>th</sup> July - 2.00pm
- ~~Break up for Summer~~ - Friday, 17<sup>th</sup> July - 1.30pm

Please see below the dates for this term's class Masses that will take place in church at 9.15am:-

- ~~Class 5S Mass~~ - Tuesday, 28<sup>th</sup> April
- ~~Class 3/4T Mass~~ - Tuesday, 5<sup>th</sup> May
- ~~Class 3S Mass~~ - Tuesday, 12<sup>th</sup> May
- ~~Whole School Ascension Day Mass~~ - Thursday, 14<sup>th</sup> May
- ~~Class 5/6T Mass~~ - Tuesday, 19<sup>th</sup> May
- ~~Class 4A Mass~~ - Friday, 5<sup>th</sup> June
- ~~Class 6A Mass~~ - Tuesday, 9<sup>th</sup> June
- ~~Class 1/2T Mass~~ - Tuesday, 16<sup>th</sup> June
- ~~Class 2A Mass~~ - Friday, 26<sup>th</sup> June
- ~~Class 1S Mass~~ - Tuesday, 30<sup>th</sup> June
- ~~Reception Mass~~ - Tuesday, 7<sup>th</sup> July
- ~~Whole School Mass~~ - Friday, 17<sup>th</sup> July

Please see below the dates for this term's class Assemblies that will take place in school at 9.05am:-

- ~~Class 1S Assembly~~ - Wednesday, 6<sup>th</sup> May
- ~~Class 5S Assembly~~ - Wednesday, 10<sup>th</sup> June
- ~~Class 2A Assembly~~ - Tuesday, 16<sup>th</sup> June - 2.40pm
- ~~Class 3/4T Assembly~~ - Wednesday, 24<sup>th</sup> June
- ~~Class 3S Assembly~~ - Wednesday, 1<sup>st</sup> July
- ~~Class 1/2T Assembly~~ - Tuesday, 7<sup>th</sup> July - 2.40pm.

**Advance Notice - Year 6 Production/Assembly**

This year our Year 6 children will be showcasing their leavers' production at 6.00pm on Monday, 13th July and at 1.45pm on Tuesday, 14<sup>th</sup> July. More information will be sent home in due course but we can promise you an evening/afternoon that you won't forget!!

Our Year 6 Assembly will take place at 2.00pm on Thursday, 16<sup>th</sup> July. This will certainly be an afternoon where you will need your tissues!!

**Sun Cream**

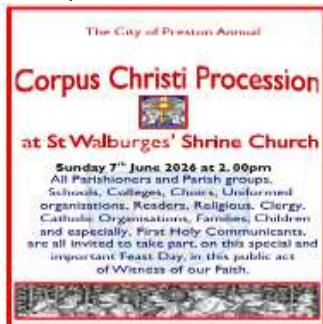
We have been enjoying the lovely weather recently and really hope that the sunshine is here to stay. With this in mind, please can we request that, if possible, you apply an eight-hour sun cream to your child and, if you do send sun cream into school, please can we ask that it be in the original bottle labelled with your child's name. Thank you for your support.

**Allergies linked to pollen/grass**

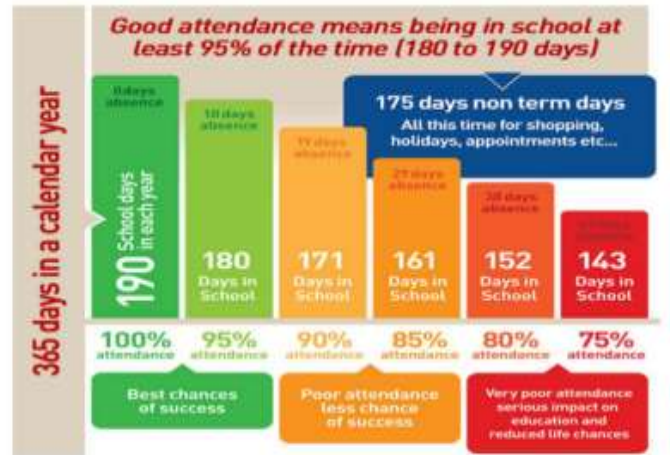
Now that the lovely weather is here, the children are spending time on the field during lunchtimes. If your child suffers from hay fever or other skin related allergies linked to grass, please can we ask that you give them medication prior to the start of the school day.

**Corpus Christi Procession**

Please see below a poster regarding the annual Corpus Christi Procession that will take place at 2.00pm on Sunday, 7<sup>th</sup> June. It would be lovely if children could represent school in this procession, especially those children who are receiving the Sacrament of Holy Communion in June.



**Attendance – Friday, 24th April to Thursday, 30th April, 2026**



Did you know? A two week holiday in term time means the highest attendance you can achieve is 94.7%.

Rec S	95.22%
Rec T	96.82%
<b>1S</b>	<b>98.67%</b>
1/2T	95.67%
2A	97.0%
3S	98.33%
3/4T	95.33%
4A	97.1%
5S	95.33%
5/6T	92.58%
6A	94.83%
<b>Whole School</b>	<b>96.08%</b>
<b>Whole School Target</b>	<b>96.0%</b>

**Attendance Winners** - A huge well done to Class 1S who have achieved 98.67% attendance this week.

**Punctuality** - Registration is at 8.45am prompt and when a child arrives in class after 8.50am they receive a late mark. Arriving on time is important, being late means that children miss the start of lessons, which means lost learning.



**No Lates** – Well done to Class 6A who have had no late marks this week.