



# St Barnabas

**Monday 8th January 2024**

Church of England Primary Academy

A member of **CDARI**



## The Peace

*Leader:*

The peace of the Lord be always with you.

***All: And also with you.***







# FAR FROM HOME













lightbulb  
moment

# Epiphany





Epiphany: **'a church festival that celebrates the visit of the wise men to Bethlehem to see the baby Jesus'.**



The word 'epiphany' comes from a Greek word which means 'making known'; the birth of Jesus was the beginning of God making known who Jesus is and God's plan for the world.

Epiphany: **'a sudden and inspiring revelation'.**



At the time Jesus was born Jews and Gentiles (non-Jews) never mixed. It would have been a hugely surprising revelation that God wanted Gentiles (the wise men) to see Jesus (who was a Jew).

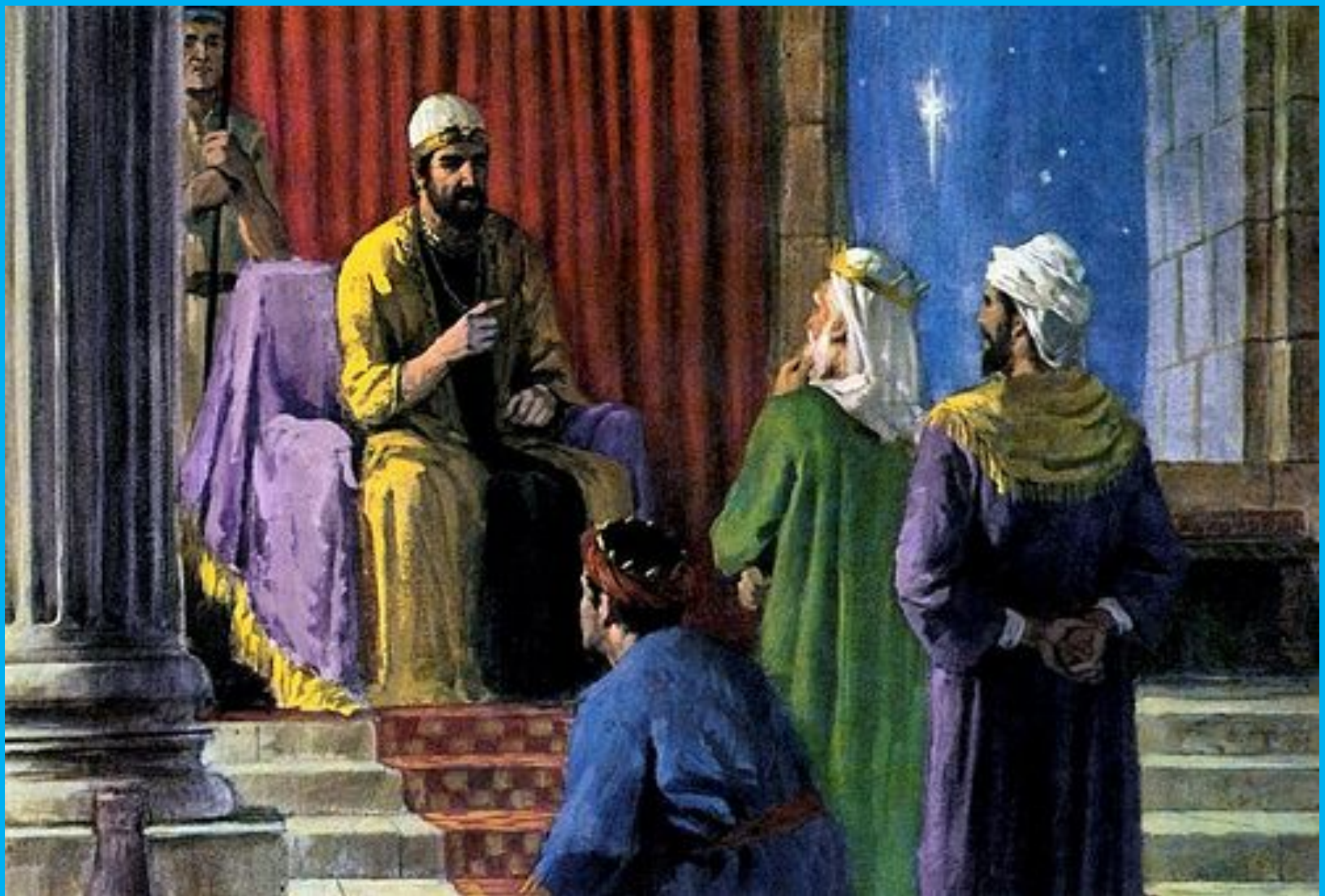


One of the things that the festival of Epiphany reveals is that God doesn't have favourites but welcomes people from any background and any nationality.

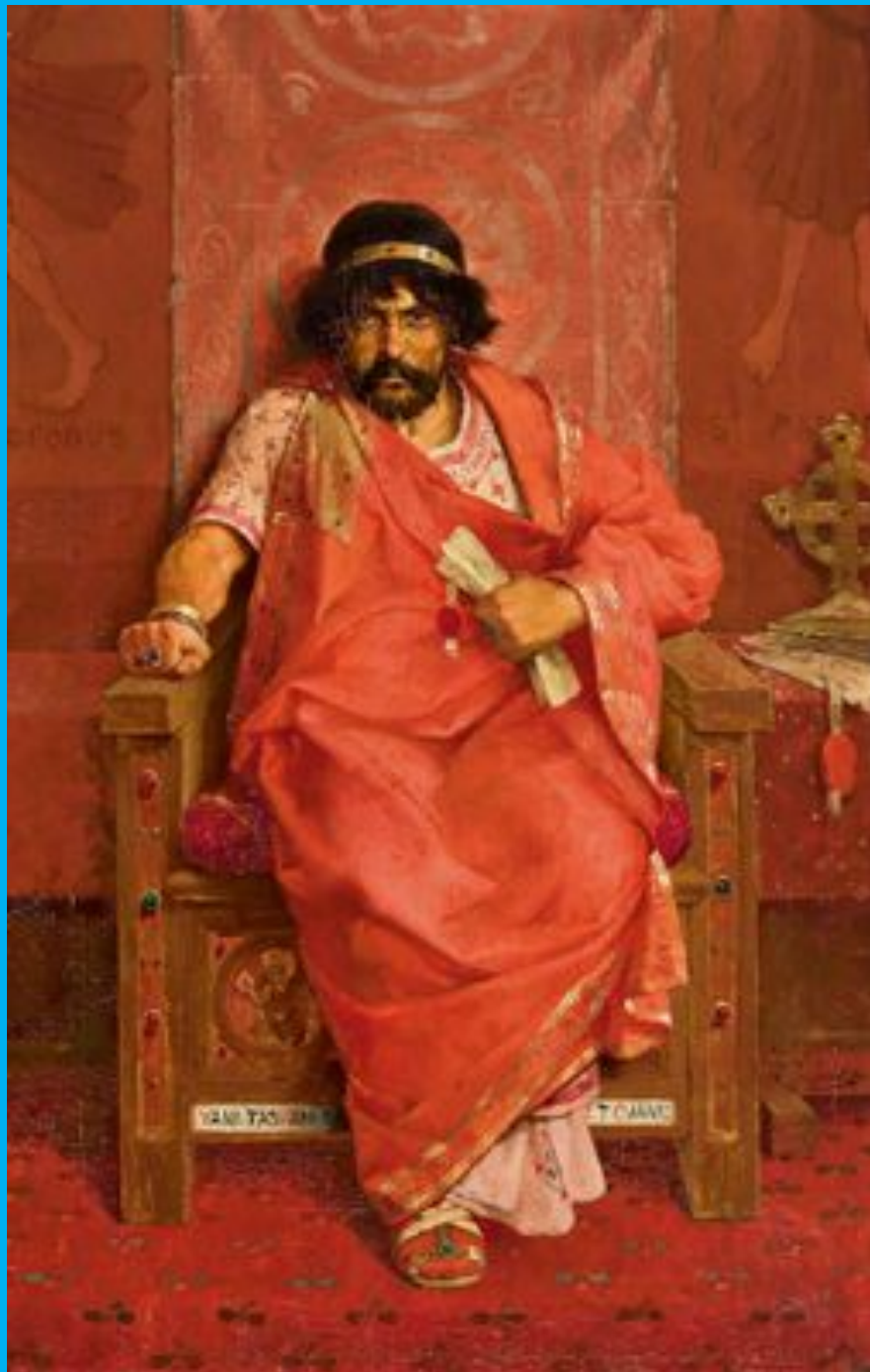


**One hump, two humps, lumpety lump,  
The star watchers went with a bumb and thump!  
One hump, two humps, lumpety lump,  
The star watchers followed the star.**





**One hump, two humps, lumpety lump,  
The star watchers went with a bumb and thump!  
One hump, two humps, lumpety lump,  
The star watchers followed the star.**



**One hump, two humps,  
lumpety lump,  
The star watchers went  
with a bumb and thump!  
One hump, two humps,  
lumpety lump,  
The star watchers  
followed the star.**





**One hump, two humps, lumpety lump,  
The star watchers went with a bumb and thump!  
One hump, two humps, lumpety lump,  
The star watchers followed the star.**





**One hump, two humps, lumpety lump,  
The star watchers went with a bumb and thump!  
One hump, two humps, lumpety lump,  
The star watchers followed the star.**



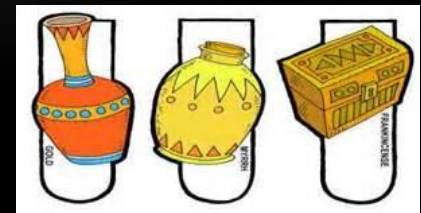
What did the gifts mean?

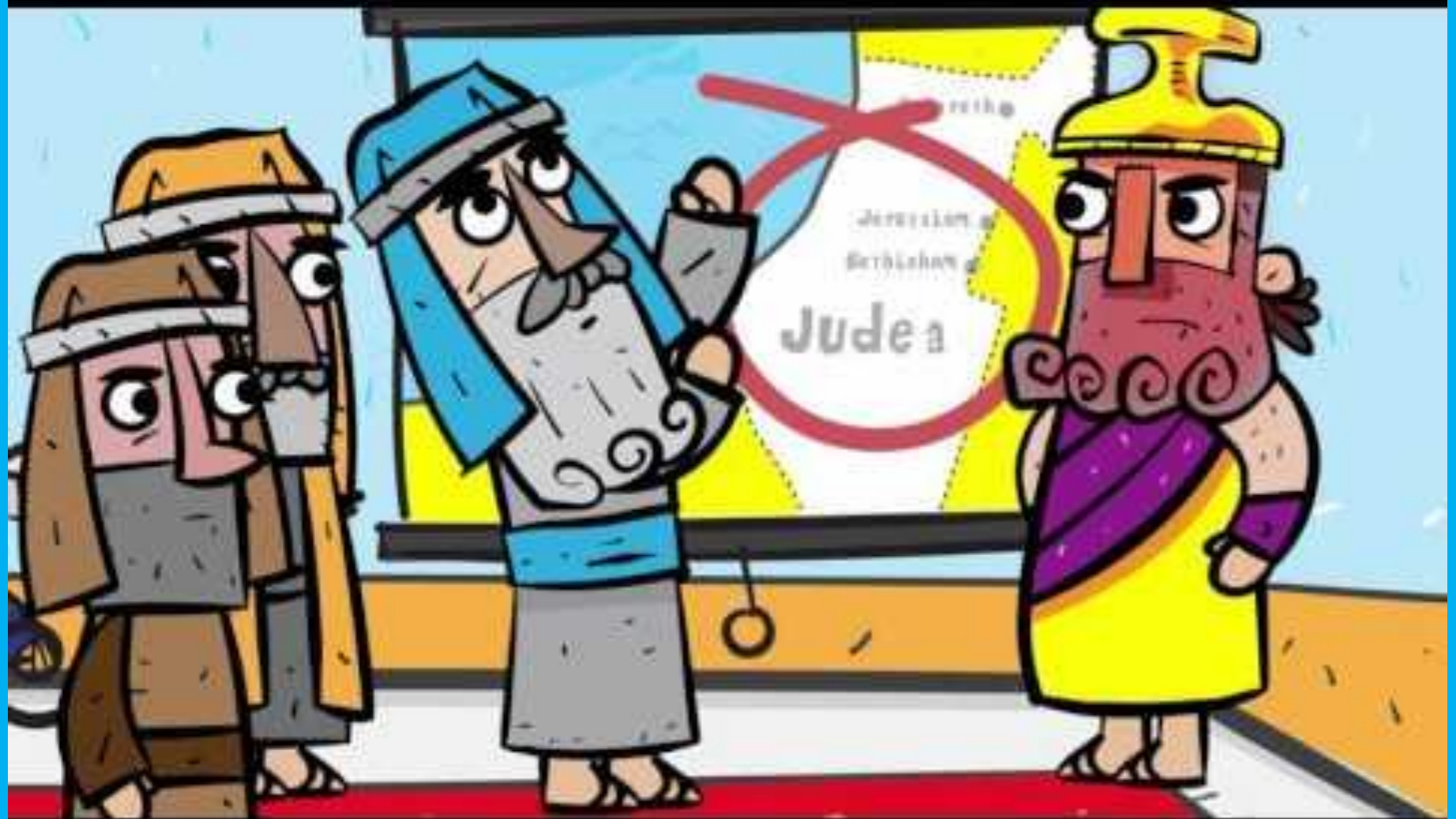


**Gold is a gift fit for a king. It recognised that Jesus was a great king, the king of the world.**

**Frankincense is a special kind of fragrance that was used by a priest.**

**Myrrh was a sweet-smelling liquid that was rubbed gently into the skin of someone who had died. It indicated that Jesus' death would be important.**





# Reflection

How do you think Mary and Joseph felt when they had to flee from Bethlehem with Jesus?

How can we show generosity to those who have had to flee their homes?





# ROTAKIDS AND THE SMART SCHOOL COUNCIL 2023

PIC•COLLAGE



## Easter Eggs for

# DARE

Darwen & Asylum Refugee Enterprise

PIC•COLLAGE





# Epiphany Prayer

Dear God,

We thank you that you brought Mary, Joseph and to safety after fleeing from Bethlehem . We thank you for Christmas, and for the holidays you gave us to enjoy with our friends and families.

As we think about Epiphany, we are reminded that every person is important to you. Help us to do the same, to welcome people from all backgrounds and religions and to help those who have had to flee from their homes.

Please help us to enjoy all the gifts that you have given to us and to share them with others.

Amen.

# Dear Lord

We thank you for bringing baby Jesus for both rich and poor.

Today, as we learn about Epiphany,  
we see that everyone is important to you,  
Everyone has gifts that are special and wonderful.

We promise together, that we will try  
to use all the gifts you have given to us  
in school, at home and at play.

Thank you, Lord. Amen.

