

# St Bart's Quick Guide To: Nursery



**Welcome to Nursery!**

We would like to welcome back all our children and their families and wish a warm welcome all our new children and their families. We hope you have had a lovely summer break.

Please have a look at our quick guide that shows you important information relating to your child's time in Nursery.

**Meet the team:**

**Assistant Head/ Early Years**

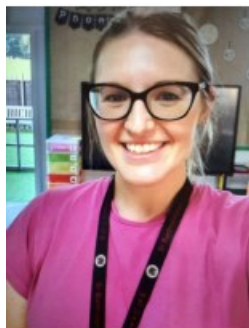
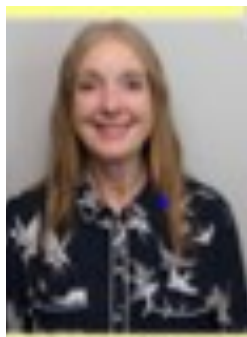
Mrs Kathryn Brown

**EYFS Lead**

Mrs Faye Ingleson

**Nursery Teacher**

Ms Nina El Ghitaoui



**Nursery Nurse**

Miss Camille Grange

**Nursery Nurse**

Miss Emma Howden

**Teaching Assistant**

Miss Molly Dickinson

**Teacher**

Mrs Maria Harvey



St Bartholomew's C of E Primary School  
Strawberry Lane  
Tong Road  
Leeds  
LS12 1SF  
Tel: 0113 263 9292



@StBartsCofE



st-bartholomews.leeds.sch.uk

# St Bart's Quick Guide To: Nursery



## Opening/Collection Time

Morning session 8:30-11:30  
Afternoon session 12:30-15:30

**Please ensure that your child arrives and is collected on time.**



We provide all children with a rich, safe and stimulating environment that is inclusive and supportive for all. Learning is play-based and takes place both indoors and outside. Please make sure your child is wearing weather appropriate clothing.

## The Curriculum

**"Children learn by leading their own play, and by taking part in play which is guided by adults."** (Department for Education).

Learning in nursery is a balance between adult directed learning, enhanced provision and child initiated experiences. The curriculum enables the children to become independent and curious learners. During their time in Nursery your child will enjoy learning through a range of different topics including All about me, Celebrations, Explorers, The world, Transport, Growing, Minibeasts and many more. The children in our Early Years Foundation Stage take part in activities based around the areas of learning. A bank of core learning opportunities is provided to make the curriculum exciting. We aim to provide children with real life, hands on experiences throughout the year. We also follow the interests of your children to help them to make even more progress. Your child will have Communication, Literacy and Maths sessions throughout the week and daily Phonics sessions.

## Nursery Learning Journals

We use Online Learning Journals to share a few of your child's wow moments and weekly updates about what we have been learning in Nursery. As parents, you are also able to use Learning Journals to upload photos, video clips and observations of any specific achievements to help us to develop a fully rounded picture of your child's interests and development. Your child will have an opportunity to share those observations with us and their friends during carpet time sessions.

## School Dinners

If your child stays at school for full days there is a charge of 3 pounds per day. They will also need a packed lunch or a school dinner. School dinners cost £2.00 per day for Nursery children. You can pay for your dinners for the week every Monday. The school has a tasty and healthy menu. Dinner menus are displayed weekly in classrooms and on the corridor for

## School Uniform

It is school policy that all children wear school uniform.

School uniform consists of a red jumper or a cardigan, a white polo shirt and black or grey trousers or a skirt/ pinafore. Red checked dresses are suitable for summer.

**Please ensure that the uniform has your child's name on it.**

## Come and Read

Every term we will offer opportunities for parents to come and read with their children before or after their session. More information will follow.



## Spare Clothes

If you would like your child to have a spare set of clothes in Nursery including wellies for outdoor play, please send in a bag labelled with their name and we can leave it on their peg.



St Bartholomew's C of E Primary School  
Strawberry Lane  
Tong Road  
Leeds  
LS12 1SF  
Tel: 0113 263 9292



@StBartsCofE



st-bartholomews.leeds.sch.uk