

# St Bart's Quick Guide To: Reception



## Welcome to Reception

**We would like to welcome all our parents/carers and children to St Bartholomew's Reception We hope you had a lovely summer !**

We are a school with high expectations. We will always strive to bring the best out of your child and ensure that your child is safe and happy at school. Our school vision is... **B**elieve – We believe we will flourish in God's family. **A**chieve - We know that everyone at St Barts can achieve. **R**espect - We respect everyone in our school family. **T**ogether - Together we support and help each other. **S**ucceed - As part of Gods family we support everyone to succeed.

## Useful Information

### OPENING TIMES

**8.30am - 8.50 am**

**COLLECTION TIME 3.15pm**

**Please ensure that your child attends every day and arrives and is collected on time.**

**When collecting your child, please join the queue under the shelter. This ensures all children exit school safely. If you would like to speak to a member of staff please wait near the red shutter.**

### The Curriculum

The curriculum is taught through both topics and through the interests of the children. Some of these topics include :

**Who am I and what makes me, me?**

**What can I see and how does it change ?**

**Where can I go and how can I get there?**

The children in our Early Years Foundation Stage take part in activities based around the areas of learning. We have lots of fun in the classroom areas and throughout the day your child will take part in teacher led activities, teacher supported activities and independent play, tasks and challenges. We plan carefully based on children's interests and next steps. In Reception your child will have a daily Phonics session. Your child will also engage in Communication and language, Maths and topic carpet sessions. In the Early Years Foundation Stage we make sure that our whole curriculum is exciting and full of real experiences.



We provide all children with a rich, safe and stimulating environment that is inclusive and supportive for all. Learning is play-based and takes place both indoors and outside. Please make sure your child is wearing weather appropriate clothing.

### Online Learning Journals

We use Online Learning Journals to share a few of your child's wow moments and weekly updates about what we have been learning in Reception. As parents, you are also able to use Learning Journals to upload photos, video clips and observations of any specific achievements to help us to develop a fully rounded picture of your child's interests and development. Your child will have an opportunity to share those observations with us and their friends during carpet time sessions. We also have large floor books to display photographs and children's work which can be viewed by parents.

### School Uniform

It is school policy that **all** children wear school uniform. School uniform consists of a red jumper or cardigan, a white polo shirt and black or grey trousers or a skirt/pinafore. Red checked dresses are suitable for summer. Please ensure that you put your child's name in their school uniform. joggers/ leggings and trainers.



### PE

P.E kits should be worn to school on PE days

Tuesdays and Wednesdays

Children will be provided with a red t-shirt and will need to wear black joggers/ leggings and trainers.

### School Dinners

School dinners **are free to all children in Reception**. The school has a tasty and healthy menu. Dinner menus are displayed weekly in classrooms and on the website for parents to view available meal choices.



### Reading

Reading is incredibly important and is one of our key priorities. Research shows that children who are read to and heard read regularly make much faster progress and attain higher outcomes than those who do not have such opportunities. Reading helps children engage with the world around them and opens the door to other curriculum areas. Therefore we expect children to read at home at least **3 times per week**. Children will bring home a new book each week and these books must be returned every day so children can practice in school too. To help develop children's enjoyment of reading and stories we will be sending home reading rucksacks each Friday with 2 children per class.



St Bartholomew's C of E Primary School  
Strawberry Lane  
Tong Road  
Leeds  
LS12 1SF  
Tel: 0113 263 9292



@StBartsCofE

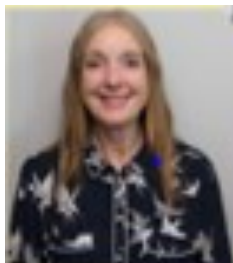


st-bartholomews.leeds.sch.uk

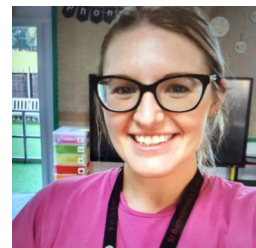
# St Bart's Quick Guide To: Reception



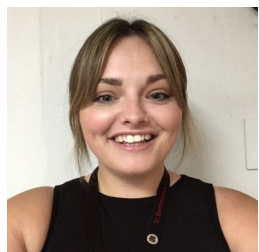
**Mrs Brown– Assistant Head  
EYFS & SENDCO**



**Mrs Ingleson- EYFS Lead  
Class 2 teacher**



**Miss Poole  
Class 1 Teacher**



**Miss Fitzmaurice  
Class 2 Teacher**



**Miss Lavery  
Teaching Assistant**



**Miss Giliker  
Teaching Assistant**



**Mrs Panasar  
Teaching Assistant**



**Miss Zdenka Cisarova  
Teaching Assistant**



**Miss Joy  
Teaching Assistant**



**Miss Ralitsa Yordanova  
Teaching Assistant**



**Miss Appleton  
SEND teacher**



**Miss Harvey  
Teacher**



St Bartholomew's C of E Primary School  
Strawberry Lane  
Tong Road  
Leeds  
LS12 1SF  
Tel: 0113 263 9292



@StBartsCofE



st-bartholomews.leeds.sch.uk