

St Bart's Quick Guide To: Special Educational Needs



At St Bartholomew's C of E Primary School, we are proud to be an inclusive school. Through our comprehensive approach to SEND, we strive to provide a secure, caring and happy environment in which all of our pupils can experience success and enjoyment.

Our dedication to meet all children's individual needs helps us to maximise every child's inclusion in all aspects of school life. We believe in equal opportunities for all, where everyone is treated with respect, dignity and are equally valued. We value and honour the views of our pupils and their families. Therefore we encourage opportunities for you to influence the ethos of SEND and to be fully involved in the decision making process.

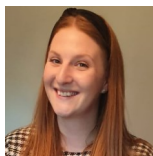
Meet the team

Mrs Brown



SENCO

Mrs Hartnett



SENCO

Mrs Schofield



SENCO

SEN support at St Bartholomew's

At St Bartholomew's C of E Primary School we work hard to ensure that all children receive the support and provision they need to achieve success and enjoyment. This is done through careful planning of support and provision which is split up into three key areas:

1. **Universal provision**– Provision that can be put in place within the classroom and managed by the class teacher.
 2. **Targeted intervention**– Provision aimed to develop a specific need provided by a trained member of staff usually delivered 1:1 or in small groups.
 3. **Specialist intervention**– Provision provided by an outside agency aimed to develop a specific need.
- Through working closely with the class teacher, SENCO and outside agencies all children are provided with the best possible provision to cater for their individual needs.



St Bartholomew's C of E Primary School
Strawberry Lane
Tong Road
Leeds
LS12 1SF
Tel: 0113 263 9292



@StBartsCofE



st-bartholomews.leeds.sch.uk

St Bart's Quick Guide To: Special Educational Needs



Interventions available at St Bartholomew's

The school has a range of interventions to support children, these include but are not limited to:

- Speech and language therapy
- Rapid phonics
- Word wasp
- Art therapy
- Zones of Regulation
- Nurture groups
- Fine motor skills
- Essential letters and sounds
- Lego Therapy



Leeds Local Offer and other agencies involved

The Leeds local offer is an area that provides services and information for children, young people, parents and carers with special educational needs and disabilities. This one single place will offer clear, comprehensive, accessible information about provision available to you and your family and how to access it.

<https://leedslocaloffer.org.uk>

The school has strong partnerships with outside agencies. These include, but are not confined to, Educational Psychologists, Special Training in Autism and Raising Standards (STARS), cluster support, Children and Adolescent Mental Health Service (CAMHS), MindMate and the Special Educational Needs and Disabilities Information, Advice and Support Services (SENDIASS).

Useful Links

- Leeds and District Autism, Behaviour and Communication Support Group <https://leedsabcgroupp.wordpress.com/>
- Mind Mate- Mental Health service <https://www.mindmate.org.uk/>
- Leeds SENDIASS <https://sendiass.leeds.gov.uk/>
- Max Card- exclusive offers and discounts for families of children with SEND <https://mymaxcard.co.uk/apply-now/>

Contact details

We strive to ensure we have open communication with all parents, if you have any questions or queries regarding special educational needs please do not hesitate to contact us on the SENCO email address:

send@stbartsleeds.org.uk



St Bartholomew's C of E Primary School
Strawberry Lane
Tong Road
Leeds
LS12 1SF
Tel: 0113 263 9292



@StBartsCofE



st-bartholomews.leeds.sch.uk