

# St Bart's Quick Guide To: Special Educational Needs

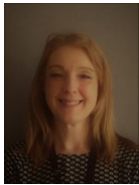


At St Bartholomew's C of E Primary School, we are proud to be an inclusive school. Through our comprehensive approach to SEND, we strive to provide a secure, caring and happy environment in which all of our pupils can experience success and enjoyment.

Our dedication to meet all children's individual needs helps us to maximise every child's inclusion in all aspects of school life. We believe in equal opportunities for all, where everyone is treated with respect, dignity and are equally valued. We value and honour the views of our pupils and their families. Therefore we encourage opportunities for you to influence the ethos of SEND and to be fully involved in the decision making process.

## Meet the team

Mrs Brown



SENCO

Miss Hartnett



SENCO

Rebecca Clegg



Speech and Language Therapist

## SEN support at St Bartholomew's

At St Bartholomew's C of E Primary School we work hard to ensure that all children receive the support and provision they need to achieve success and enjoyment. This is done through careful planning of support and provision which is split up into three key areas:

1. **Universal provision**– Provision that can be put in place within the classroom and managed by the class teacher.
  2. **Targeted intervention**– Provision aimed to develop a specific need provided by a trained member of staff usually delivered 1:1 or in small groups.
  3. **Specialist intervention**– Provision provided by an outside agency aimed to develop a specific need.
- Through working closely with the class teacher, SENCO and outside agencies all children are provided with the best possible provision to cater for their individual needs.



## Interventions available at St Bartholomew's

The school has a range of interventions to support children, these include but are not limited to:

- Speech and language therapy
- Rapid phonics
- Word wasp
- Art therapy
- Zone of Regulation
- Nurture groups
- Fine motor skills
- NELI
- Power of two

# St Bart's Quick Guide To: Special Educational Needs



## Leeds Local Offer and other agencies involved

The Leeds local offer is an area that provides services and information for children, young people, parents and carers with special educational needs and disabilities. This one single place will offer clear, comprehensive, accessible information about provision available to you and your family and how to access it.

<https://leedslocaloffer.org.uk>

The school has strong partnerships with outside agencies. These include, but are not confined to, Educational Psychologists, Special Training in Autism and Raising Standards (STARS), cluster support, Children and Adolescent Mental Health Service (CAMHS), MindMate and the Special Educational Needs and Disabilities Information, Advice and Support Services (SENDIASS).

In addition to this St Bartholomew's have an in house speech and language therapist Rebecca Clegg. She has regular contact with children who have speech and language needs. Rebecca follows the same system of universal, targeted and specialist. Universal provision is achieved by liaising with teachers to develop classroom provision for children who have a speech and language need. Targeted intervention is delivered to some children through a bespoke speech and language programme written by Rebecca and delivered by a member of support staff. Specialist intervention is a 1:1 or small group session delivered by Rebecca. The level of provision is designed to match the speech and language need.

Rebecca helps with a range of speech and language needs, these include but are not limited to:

- Language development
- Understanding language
- Social interaction
- Understanding social situations
- Recognising, understanding and producing speech sounds
- Attention and listening developments

## Useful Links

- Leeds and District Autism, Behaviour and Communication Support Group <https://leedsabcgroup.wordpress.com/>
- Mind Mate- Mental Health service <https://www.mindmate.org.uk/>
- Leeds SENDIASS <https://sendiass.leeds.gov.uk/>
- Max Card- exclusive offers and discounts for families of children with SEND <https://mymaxcard.co.uk/apply-now/>

## Contact details

We strive to ensure we have open communication with all parents, if you have any questions or queries regarding special educational needs or speech and language please do not hesitate to contact us on the SENCO email address: [send@stbartsleeds.org.uk](mailto:send@stbartsleeds.org.uk)