

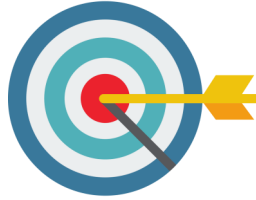


St Bega's Catholic Primary School



Autumn 24 Attendance Summary

**WHOLE SCHOOL
ATTENDANCE TARGET**
95%



ATTENDANCE
AUTUMN TERM 96%

**ATTEND today....
ACHIEVE tomorrow!**

Target: Our whole school attendance target is **95%**. By the end of the Autumn term it was **96%**. As you can see, this is above our target so well done everyone! We are however early into the academic year so we will still need to work really hard to stay ahead of our target. At St Bega's, many of our children have good attendance and we thank our families for this commitment. Our attendance figures however are impacted by those children whose attendance is not good, particularly those that fall into the Persistent Absence category (PA = 90% or below) The good news however, is that due to everyone's hard work, our school's PA was reduced by **10%** last year which is amazing! We remain committed to supporting our families by removing barriers to good attendance, but will continue to challenge poor attendance to ensure our children are given the best opportunities and start to life.

Together we can make a difference!

Rewards: As you know, good attendance is rewarded every Friday during our whole school achievement assembly. We have changed our reward system, so ask your child about it! From now on, the class with the highest attendance at the end of the week, will get **'15 minutes of Fun'** the following week. They will also have a **'Trophy'** added to the attendance chart. The class with the most **'Trophies'** at the end of each term, will be rewarded with a **'Treat Afternoon'**. At the end of a term, children with attendance of **98%** or above will have their names added to a hat. A name will be pulled out at random and that child will receive a prize. How exciting! Good luck everyone!

Early Years/Key Stage 1

Nursery: 91%
Reception: (Class 1) = 96%
Year 1: (Class 2) = 94%
Year 2: (Class 3) = 97%

Key Stage 2

Year 3: (Class 4) = 95%
Year 4: (Class 4) = 98%
Year 4: (Class 5) = 94%

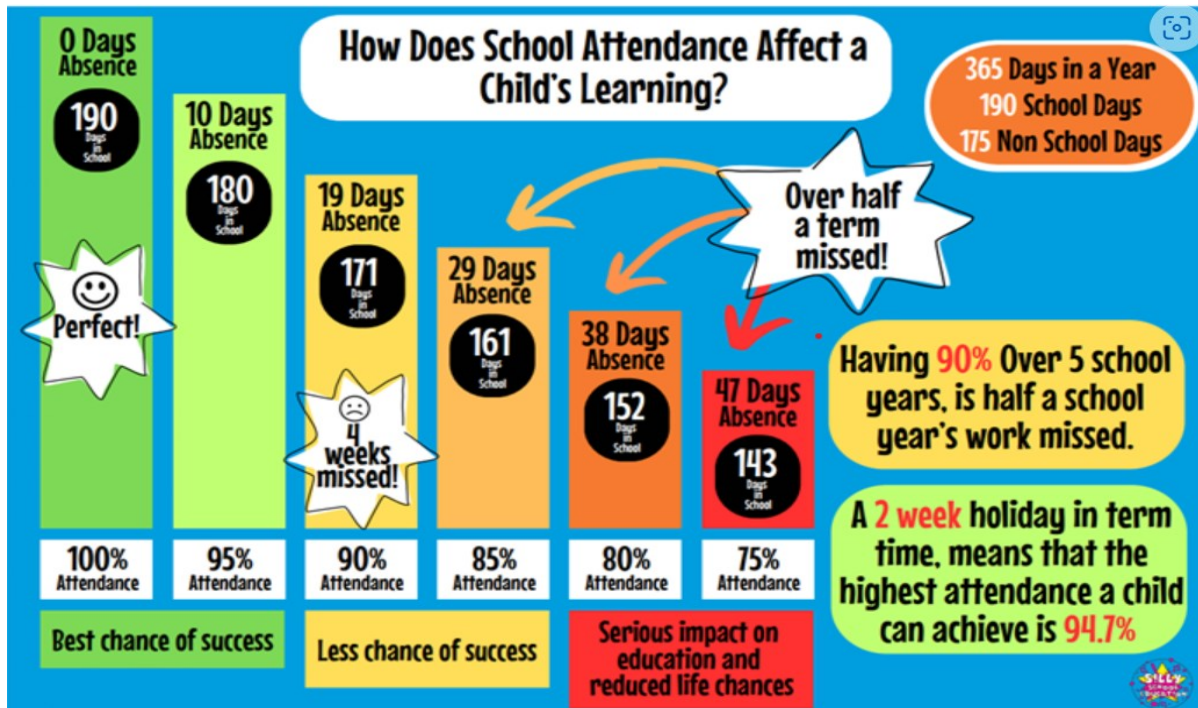
Key Stage 2

Year 5: (Class 5) = 96%
Year 6: (Class 6) = 97%

Congratulations: **Six of our classes met or exceeded the whole school target.** Amazing! We are so proud of you—keep up the good work! Come on the rest of you — you can do it!!



Autumn 24 Attendance



PUNCTUALITY: IF YOUR CHILD IS LATE

- ◇ They can feel embarrassed entering their classroom or assembly late. This can lead to a child becoming anxious and not wanting to attend at all.
- ◇ They miss the input to new learning which makes it difficult for them to understand what is expected of them. This can lead to a lack of confidence.
- ◇ It disrupts the learning of other children.
- ◇ **Support:** Attending Breakfast Club or After School Club may be useful to you.

Our school gates open at 8:40am...

...and close at 8:50am when learning begins!

Our **Breakfast and After School Club** is available to support families by caring for children at the start and end of the school day. (Wrap-around Care) We provide a welcoming, warm and supportive environment. **The children love these sessions!**

Breakfast Club: 7.45 till 8.50 at a cost of **£2.50** per child per session.

After School Club: 3.20 till 5.30 at a cost of **£5.50** per child per session.



Autumn 24 Attendance Reminders



Penalty Notices

The Education (Penalty Notices) (England) (Amendment) Regulations 2024 No. 210

We would like to remind you about the Department for Education's new statutory guidance for attendance which came into effect on 19th August 2024. These changes are in response to the revised publication of the Department for Education's document, Working Together to Improve School Attendance - GOV.UK (www.gov.uk) These changes are now in place.

National Threshold for the Issue of a Penalty Notice:

From 19.08.24, **only 2 penalty notices can be issued to the same parent in respect of the same child within a 3-year rolling period. A third Penalty Notice cannot be issued to the same parent in respect of the same child within 3 years. The third referral will be automatically considered for prosecution by the Local Authority.** The threshold is 10 sessions (5 days) of unauthorised absence in a rolling period of 10 school weeks. It is important to note that the 10 sessions could be made up of **term time leave, unauthorised late marks or any other unauthorised absence.** The period of 10 weeks can span different terms or school years.

Penalty Notices will be issued for:

1. **Term Time Leave: (Inc Holidays)** If a pupil takes unauthorised term time leave for 10 consecutive sessions or more (5 days) they will be subject to a Penalty Notice.
2. **Irregular Attendance:** A Penalty Notice Fine will also be issued when a child has 10 sessions of unauthorised absence in a period of 10 school weeks.

St Bega's recognises and values the importance of good attendance and therefore will always follow the '**support first**' approach when working with our families to remove any barriers to good attendance. We understand that each family is unique and therefore we will work closely with you to ensure the correct support is put in place to support your child's attendance.

If you would like further information, please refer to our website, or contact school where we will be happy to offer guidance and support.

Many thanks for your continued support.