

# St Bega's Catholic Primary School





# Nursery Brochure

2024-25

## *Welcome*

*We are delighted to welcome you and your child to St Bega's Nursery.*

*The happiness and wellbeing of our children is our priority. We hope you and your child will have an enjoyable and successful time here with us.*

*The Nursery staff welcome all of our children into a happy and caring environment where their full potential can be reached through well planned, meaningful and stimulating play opportunities and experiences. We aim to instil a curiosity and enthusiasm for learning which will continue throughout their school life and beyond.*

*We will always encourage you to be involved in your child's learning and to work in partnership with us to ensure that your child thrives and achieves the very best that they can during their time at our school. We are looking forward to working in partnership with you.*

*If you would like any further information about any aspect of life at St Bega's Nursery, please do not hesitate to contact either myself or the school office to arrange an appointment.*

## *Our Mission Statement*

*'Love one another as I have loved you.'*

## Our Team

Head Teacher	Mrs Duffield
Deputy Head Teacher & SENCO	Mrs Norman
Early Years Teacher & EYFS Lead	Mrs Robertson
EYFS Teaching Assistant	Miss Cowan
EYFS Teaching Assistants	Mrs Skinner
EYFS Teaching Assistant	Miss Neesam
EYFS Teaching Assistant	Miss Hill
School Business Manager	Mrs Kay

### **Contact:**

St Bega's Catholic Primary School  
Thorpe Street  
Hartlepool  
TS24 0DX

Telephone 01429 267768

Email [admin@stbegas.bhcet.org.uk](mailto:admin@stbegas.bhcet.org.uk)

Website [stbegas.bhcet.org.uk](http://stbegas.bhcet.org.uk)

## Admissions

### *3-4 Year Old Free EYFS Provision*

All children are entitled to 15 hours of free nursery provision provided over 38 weeks (universal entitlement).

We also offer an additional 15 hours (extended entitlement) for nursery children as well as the universal 15 hours. This is a government initiative for working parents. Free Nursery Entitlement starts the term after their 3rd birthday. To see if you are eligible for additional hours go to the web address below to make an application:

<https://eyespaportal.hartlepool.gov.uk/web/portal/pages/home>

or call the children's hub on 01429 284284 for more information.

At St Bega's we offer the following patterns of provision:

#### **Universal entitlement**

5 mornings a week

5 afternoons a week

2.5 days a week

#### **Extended entitlement (30 hours)**

9.00 – 3.00

We are open from 8.45-3.15 to allow the same drop off and pick up time as siblings.

Parents must provide a packed lunch if the children are staying all day.

We also have a Breakfast Club and after school facilities which are payable on a weekly basis. Please see a member of staff for further details.

## Nursery Uniform

There is a nursery uniform and we actively encourage children to wear it as it fosters a sense of community and belonging. The uniform is:

- ❖ Blue jumper or cardigan
- ❖ Grey skirt or trousers
- ❖ White polo-shirt
- ❖ Black shoes (not trainers)

Sweatshirts and cardigans can be ordered from Lollipops, 20 Norfolk Place, Middlesbrough, TS3 7PA, 01642 225827

[Lollipops Children's Clothes | Middlesbrough](#)

Lollipops will deliver online orders to school. There will be pop up shops in the summer term.

Personaley Design, York Road, 01429866266

<https://personaleydesign.com>

Please put a name in coats, hats, shoes and all school uniform.

Jewellery should not be worn in the interests of health and safety, including earrings.

## The Nursery Day

<i>Morning Session</i>	<i>Afternoon Session</i>	<i>Teaching and Learning Opportunities</i>
<i>8.45 – 9.00</i>	<i>12.15 –12.30</i>	<i>Welcome, register &amp; Prayers</i>
<i>9.00 – 9.15</i>	<i>12.30 – 12.45</i>	<i>Adult led input</i>
<i>9.15 – 11.15</i>	<i>1.00 – 2.45</i>	<i>Child initiated learning and adult led activities</i>  <i>Phonics</i>
<i>11.15 –11.45</i>	<i>2.45 – 3.15</i>	<i>Tidy time, story and songs</i>

## Early Years Foundation Stage

### *The Principles of the Foundation Stage*

*The Early Years Foundation Stage (EYFS) is based upon four themes, each of which is linked to an important principle:*

#### *A Unique Child*

*Every child is a competent learner from birth who can be resilient, capable, confident and self-assured.*

#### *Positive Relationships*

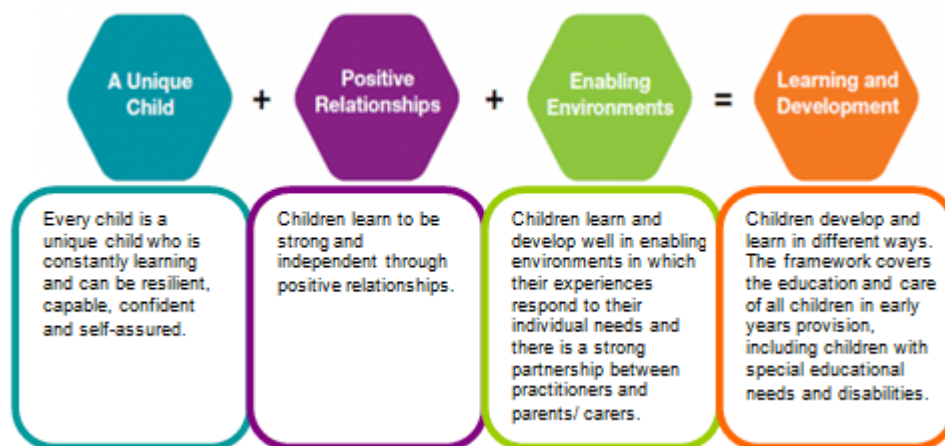
*Children learn to be strong and independent from a base of loving and secure relationships with parents and /or a key person.*

#### *Enabling Environments*

The environment plays a key role in supporting and extending children's development and learning.

### Learning & Development

Children develop and learn in different ways and at different rates and all areas of learning and development are equally important and interlinked.





## The Curriculum

Our Curriculum is designed and planned from the Early Years Development Matters and the Statutory framework documents.

### The Early Years Foundation Stage



The Early Years curriculum is made up of seven areas of learning:

#### **Prime Areas**

- ❖ *Communication and Language*
- ❖ *Physical Development*
- ❖ *Personal, Social and Emotional Development*

#### **Specific Areas**

- ❖ *Literacy*
- ❖ *Mathematics*
- ❖ *Understanding the World*
- ❖ *Expressive Arts and Design*

A high quality early years education is about learning to be independent, confident, strong and curious. It's about developing children's natural joy and wonder at the world they live in. It's about having a positive attitude, forming positive relationships and believing in yourself. Young children learn by doing things for themselves, by exploring and investigating, watching and listening, talking and discussing, creating and communicating.



### What Can I do to help my Child?

You are probably doing it already! Finding out what they have done in Nursery, discovering what they like and don't like, encouraging them to ask questions, listen to others and try out new skills all help to support their learning process. Reading your child stories and helping them to learn nursery rhymes is particularly helpful.

### Home/School Links

In nursery we use an App called See-Saw. It is here that nursery will endeavour to add photos and information about the things that we have been learning that week.

We would also like to encourage you to send us photos and information about the things your child enjoys doing at home. You may like to tell us about a particular celebration or an outing, that would be great too! We feel that your contribution is of considerable value and therefore we appreciate your engagement in this. The App is private and safe, and cannot be seen by anyone other than yourselves at home and the staff in nursery.

### Attendance

At St Bega's Nursery we believe good attendance is essential for children to feel settled and for them to be able to take full advantage of the learning and development opportunities available. At a young age continuity and consistency are important contributors to a child's well-being and progress. We also believe that regular attendance at nursery can set good practice for statutory schooling.

## Family Holidays in Term Time

Nursery Education is non-statutory and nursery pupils may take holidays in term time. Please inform us of any holiday dates.

## Hours

Morning Nursery – 8.45am until 11.45am

Afternoon Nursery 12.15pm until 3.15pm

To avoid upsetting your child, please collect him/her promptly at the end of the session. The Nursery door is locked at the end of each session. No child will be allowed to leave the unit without an adult. Please inform a member of staff if you have to arrange for a different person to collect your child.

## Home Time Arrangements

We are responsible for ensuring the safety of each of your children in our care, therefore:-

The school staff must always know who is expected to collect your child  
Children should always be collected by a responsible adult who is known to school and to the child

If it is necessary for any other adult to collect a child, staff must be informed and that person should provide a password if they are not already known to school staff

## Illness

Children are not happy at school if they are ill. **Please do not bring them if they are unwell, If you suspect that your child has an infectious or contagious illness, please let us know.**

If your child has sickness or diarrhea they should remain at home for 48 hours.

If your child needs to take **prescribed** medicine during the school day, please contact the school office for clarification of procedures for giving **prescribed medicines** to children.

It is important that you let the school office know if your child has an existing allergy or is likely to have an allergic reaction to a particular food. We have procedures in place to monitor the need to have medicines, inhalers, and epipens in school where necessary. It may be that you will have to complete a medical 'Healthcare Plan' if your child has a serious allergy requiring them to have ongoing prescribed medicines which may need to be administered in school.



**Should I keep my child off school?**

**Yes**

Until...

Chickenpox	at least 5 days from the onset of the rash and until all blisters have crusted over
Diarrhoea and vomiting	48 hours after their last episode
Cold and Flu-like illness (including COVID-19)	they no longer have a high temperature and feel well enough to attend. Follow the national guidance if they've tested positive for COVID-19.
Scabies	their skin has crusted and healed, or 48 hours after they started treatment
Shingles	4 days after the rash first appeared
Strep	5 days after the swelling started
Sore throat	they've had their first treatment
Scarlet fever	24 hours after they started taking antibiotics
Whooping cough	48 hours after they started taking antibiotics

**No**

but make sure you let their school or nursery know about...

Measles, mumps and rubella	Chickenpox
Head lice	Scabies
Threadworms	Strep throat

**Advice and guidance**

To find out more, search for health protection in schools or scan the QR code or visit <https://nhs.uk/health>.

## Accidents

Cuts, bumps and bruises are treated with a cold compress, ice pack, or plaster, if necessary, as well as plenty of TLC. In the case of a serious accident you will be contacted immediately. All Early Years staff hold a paediatric first aid qualification and will take responsibility until you arrive at school. If your child has received a heavy bump to the head you will be informed of the circumstances by the teacher at the end of the school day or by a phone call.

If you have any other questions relating to school, please feel free to speak to a member of staff.

Thank you

