

# St Bega's Catholic Primary School



# Reception Brochure



2024-25

## *Welcome*

*We are delighted to welcome you and your child to St Bega's Primary School. Starting school is an important milestone and we are dedicated to ensuring that the start of your child's learning journey is a smooth transition. The happiness and wellbeing of our children is our priority. The Reception staff welcome all of our children into a happy and caring environment where their full potential can be reached through well planned, meaningful and stimulating play opportunities and experiences. We aim to instil a curiosity and enthusiasm for learning which will continue throughout their school life and beyond. We will always encourage you to be involved in your child's learning and to work in partnership with us to ensure that your child thrives and achieves the very best that they can during their time at our school. We are looking forward to working in partnership with you.*

## *Our Mission Statement*

*'Love one another as I have loved you.'*

## Our Team

Head Teacher	Mrs Duffield
Deputy Head Teacher & SENCO	Mrs Norman
Early Years Teacher & EYFS Lead	Mrs Robertson
EYFS Teaching Assistant	Mrs Cowan
EYFS Teaching Assistant	Mrs Skinner
EYFS Teaching Assistant	Miss Neesam
EYFS Teaching Assistant	Miss Hill
School Business Manager	Mrs Kay

### **Contact:**

St Bega's Catholic Primary School  
Thorpe Street  
Hartlepool  
TS24 0DX

Telephone 01429 267768

Email [admin@stbegas.bhcet.org.uk](mailto:admin@stbegas.bhcet.org.uk)

Website [stbegas.bhcet.org.uk](http://stbegas.bhcet.org.uk)

# Early Years Foundation Stage

## *The Principles of the Foundation Stage*

The Early Years Foundation Stage (EYFS) is based upon four themes, each of which is linked to an important principle:

### A Unique Child

Every child is a competent learner from birth who can be resilient, capable, confident and self-assured.

### Positive Relationships

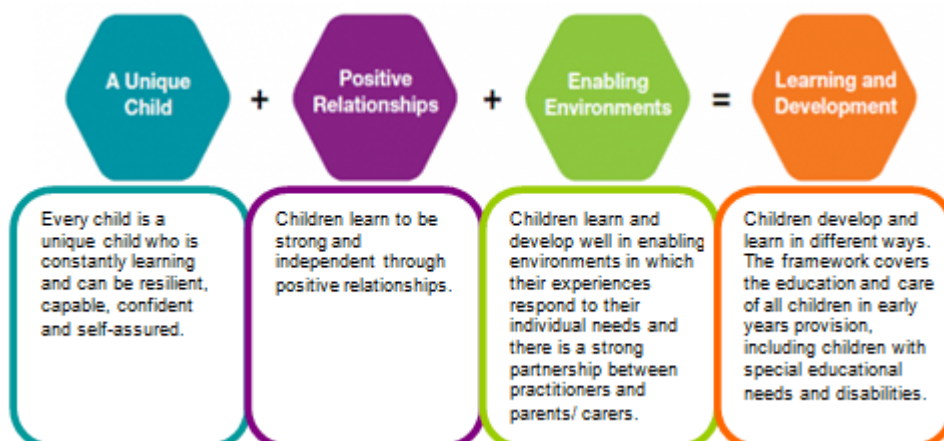
Children learn to be strong and independent from a base of loving and secure relationships with parents and /or a key person.

### Enabling Environments

The environment plays a key role in supporting and extending children's development and learning.

### Learning & Development

Children develop and learn in different ways and at different rates and all areas of learning and development are equally important and interlinked.



## The curriculum

Our Curriculum is designed and planned from the Early Years Development Matters and the Statutory framework documents.

### The Early Years Foundation Stage



The Early Years curriculum is made up of seven areas of learning:

#### Prime Areas

- ❖ *Communication and Language*
- ❖ *Physical Development*
- ❖ *Personal, Social and Emotional Development*

#### Specific Areas

- ❖ *Literacy*
- ❖ *Mathematics*
- ❖ *Understanding the World*
- ❖ *Expressive Arts and Design*

A high quality early years education is about learning to be independent, confident, strong and curious. It's about developing children's natural joy and wonder at the world they live in. It's about having a positive attitude, forming positive relationships and believing in yourself. Young children learn by doing things for themselves, by exploring and

investigating, watching and listening, talking and discussing, creating and communicating.

### **Starting school...all you need to know!**

What happens at school?

Your child will have a named coat peg. Their PE bag will be kept on their peg and book bags will be kept in a basket. You can support your child by encouraging them to become independent in following the daily routine.

Snacks – All children in Early Years receive a piece of fresh fruit or vegetable for their snack. You are welcome to send in an alternative piece of fruit too.

Toileting – Children will always be encouraged to be as independent as possible in this area.

Illness – Should your child become ill during school hours we will contact you or persons named on the personal details form as soon as possible

Accidents – Cuts, bumps and bruises are treated with a cold compress, ice pack, or plaster, if necessary, as well as plenty of TLC. In the case of a serious accident you will be contacted immediately. There is always a paediatric first aider in the Early Years who will take responsibility until you arrive at school. If your child has received a heavy bump to the head you will be informed of the circumstances by a phone call.

### **The School Day**

8.40 The doors will be opened for children to filter into school during this time children will get busy with the morning jobs which practice key skills.

8.50 registration and learning begins with adult led teaching followed by a combination of adult directed and child initiated activities.

10.15 Snack time– Healthy snack and water/milk

11.45 – 12.45 Lunch

12.45 – 3.20 adult led teaching followed by a combination of adult directed and child initiated activities

3.20 Home time

## **Working In Partnership with Parents**

We are aware that the first days at school can often be more daunting and emotional for you than your child! We believe it is very important to share information with one another about your child's achievements, targets and emotional well-being. Every effort is made to keep you in touch with your child's experiences and progress throughout these important first years.

*These are the ways in which we do so:*

- Information evening for parents
- 'Transition session' for the children before they start their reception year
- Sharing your child's learning experiences via seesaw
- Parent's Evenings
- Annual Report –Summer term
- Half termly curriculum overview information
- Whole school newsletters

*Ways you can work with us:*

- Use the reading journal to tell us when you have heard your child read at home.
- Support achievements from outside e.g. swimming, football, dancing etc
- Support Home/School links by adding any celebrations, photos etc to the Seesaw App as often as you can.
- Please support your child to complete homework tasks
- If you have any problems please speak to a member of staff
- Update contact details with office as soon as any changes occur, (new address, mobile contact no etc.

Homework is sent on the Seesaw class app. Each child has a unique code which will be given by the class teacher and gives them access to their class. If you have any problems accessing this please speak to Mrs Robertson who will be able to help.



## **Uniform**

The school uniform is:

- ❖ a white shirt
- ❖ blue jumper/ cardigan
- ❖ grey trousers, shorts, skirt, pinafore
- ❖ school tie
- ❖ blue summer dress (summer term only)
- ❖ Black school shoes, no trainers

Uniform can be ordered from Personaley Design, York Road, 01429866266

<https://personaleydesign.com>

Please ensure all items of clothing have your child's name on.

It is very useful if your child can dress and undress when they join the school.

We do not expect the majority of four/five-year olds to be able to tie their own laces, velcro fastening shoes can be one less frustration for both child and teacher in the early stages. Please name your child's clothing clearly. If your child recognizes his or her name this can be very reassuring when they are locating their special things.

Do reassure your child that they can always go to the toilet when they need to. All children should know how to flush the toilet after use, and wash their hands.

Help is at hand to cut up food during lunchtime, but we would expect children to handle a knife and fork correctly.



## Attendance and punctuality

There are 13 weeks of school holidays every year and we firmly believe that this is the time when families should take their holidays. We will follow our school attendance policy consistently and will not authorize term time holidays, unless the circumstances are exceptional. We understand that holidays are much cheaper during term time, but this should not lead to children losing some of their educational entitlement.



**Should I keep my child off school?**

**Yes**

Illness	Until...
Chickenpox	at least 5 days from the onset of the rash and until all blisters have crusted over
Diarrhoea and Vomiting	48 hours after their last episode
Cold and Flu-like illness (including COVID-19)	they no longer have a high temperature and feel well enough to attend. Follow the national guidance if they've tested positive for COVID-19.
Impetigo	their sores have crusted and healed, or 48 hours after they started antibiotics
Measles	4 days after the rash first appeared
Mumps	5 days after the swelling started
Scabies	they've had their first treatment
Scarlet Fever	24 hours after they started taking antibiotics
Whooping Cough	48 hours after they started taking antibiotics

**No**  
but make sure you let their school or nursery know about...

Hand, foot and mouth	General fever
Head lice	Rosellitis
Throatsores	Strep throat

**Advice and guidance**  
To find out more, search for health protection in schools or scan the QR code or visit <https://gros.de/mintfoc>.

## Illness

Children are not happy at school if they are ill. Please do not bring them if they are unwell, if you suspect that your child has an infectious or contagious illness, please let us know.

If your child has sickness or diarrhoea they should remain at home for 48 hours.

If your child needs to take **prescribed** medicine during the school day, please contact the school office for clarification of procedures for giving **prescribed medicines** to children.

It is important that you let the school office know if your child has an existing allergy or is likely to have an allergic reaction to a particular food. We have procedures in place to monitor the need to have medicines, inhalers, and epipens in school where necessary. It may be that you will have to complete a medical 'Healthcare Plan' if your child has a serious allergy requiring them to have ongoing prescribed medicines which may need to be administered in school.

### **Accidents**

*Cuts, bumps and bruises are treated with a cold compress, ice pack, or plaster, if necessary, as well as plenty of TLC. In the case of a serious accident you will be contacted immediately. All Early Years staff hold a paediatric first aid qualification and will take responsibility until you arrive at school. If your child has received a heavy bump to the head you will be informed of the circumstances by the teacher at the end of the school day or by a phone call.*

*If you have any other questions relating to school please feel free to speak to a member of staff*

