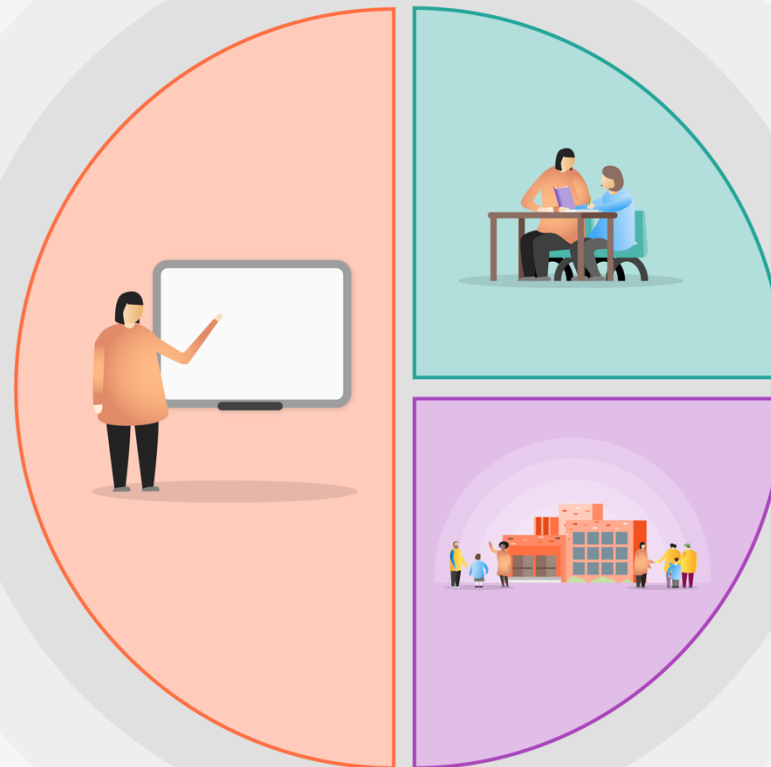


1 Teaching

- Quality first teaching for all
- A broad, balanced and engaging curriculum
- RWI phonics delivered rigorously and robustly with ongoing CPD for staff
- Mastery maths through White Rose alongside Maths Whizz to identify gaps in children's learning and offer bespoke catch up for all learners
- Focus on a love of reading throughout the school through Strive for Five
- Curriculum between EYs and KS1 supports children's learning in a progressive way
- Staff meetings ensure good practice is shared and expectations across the school are followed
- Regular communication with parents through Class Dojo to support learning and emotional well-being
- Continually reviewing the learning offer we are making and looking at ways to refine it
- Accessing high quality CPD to support learning and learners
- Formative and summative assessment enables teachers to understand what children know and plan for next steps
- Rigorous monitoring of pupils' progress



2 Targeted academic support

- Communication interventions – Talk Boost and NELI
- Specific intervention programmes led by teachers and teaching assistants – RWU 1:1s, IDL Literacy, Numbots, TTRockstars, Maths Whizz
- Targeted English and maths support for those below age related expectations
- SALT support from outside agencies
- Autism specialist support for children and staff

3 Wider strategies

- Trained STA to provide emotional literacy for targeted children
- Attendance meetings where necessary
- Culture capital experiences promoted in the curriculum
- Subsidising school trips, breakfast club, residentials, uniforms etc.
- Early Help identification early on
- PSHE lessons to support children's mental health