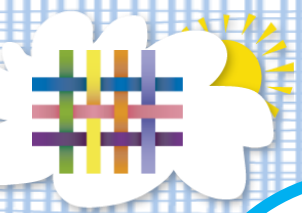




TAPESTRY

ONLINE LEARNING JOURNAL



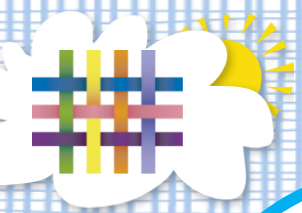
What is Tapestry?

- An online learning journal system.
- Staff record children's progress and activities using tablet devices and PCs in the classroom.
- Staff and parents access Tapestry through a secure login.



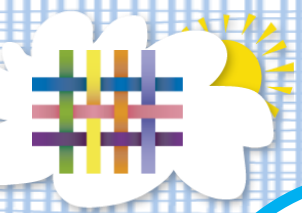
Why are we using Tapestry?

- It creates a two way communication between teachers and parents or carers.
- We can upload media, meaning you can see pictures and videos of what your children are up to at school.
- It keeps an up to date log of children's progress.
- It provides the opportunity for parents to extend learning at home, uploading their own observations and also adding comments onto teacher observations.



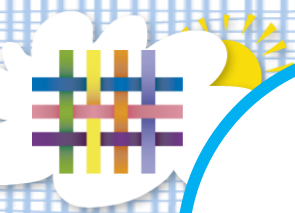
The benefits of using Tapestry

- Tapestry is an up to date view of your child's progress.
- It can be accessed easily by website or by a downloaded smartphone app.
- It allows parents to contribute to the learning journey, capturing significant learning experiences.
- Email notifications are sent to inform parents of new observations and comments, to ensure parents are involved every step of the way.
- Tapestry helps to form a good working relationship between teachers and parents or carers.
- When the child leaves the setting, parents can download a copy of the Journal through the login system.



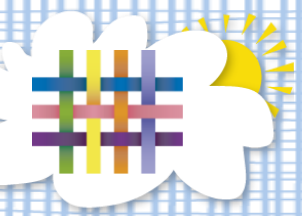
How we use Tapestry at school

- As a staff we conduct observations of children daily.
- We publish observations as soon as possible to keep up to date with each child's progress.
- The amount of observations per child will varies.
- Tapestry generates progress information to enable us teachers to plan further activities to enhance progress.



How is the data protected?

- A password is required to access Tapestry, and parents can only view observations of their own children or group observations.
- Hosted on Tapestry's own servers in a secure UK data centre.
- Tapestry uses the same encryption as online banking.
- Data is stored separately for each school.
- Tapestry's developers and support personnel require our permission to access our Tapestry account.



Any questions?