



Examinations 2025

Guidance for Students and Guardians

Centre Name : St Cecilia's RC High School

Centre Number : 46605

St Cecilia's
R. C. High School



Introduction



At St Cecilia's it is our aim to ensure that candidates are as secure and comfortable as possible in the stressful conditions of examinations.

Preparation is the best way to reduce stress. This booklet should help in the preparation for the examinations. Please read it carefully and share it with your parents/guardians so that they are also aware of the regulations and procedures which follow in the event of any problems occurring.

The examinations are National Examinations, overseen by the Joint Council for Qualifications. The students and the school must follow the regulations set down by them. If candidates do not follow the guidelines their examination paper could be cancelled by the Examination Board.

In particular you must read and carefully follow the instructions in the Information for Candidates' sheets at the back of this booklet.

If you or your parent's need any help or advice, please do not hesitate to contact school. If the question is about a particular subject the Head of Department will be able to help. If the query is about the organisation of exams, the timetable or a more general question please contact the Exams Officer.

Examinations Officer – Mrs K Gavan

Email - exams@st-cecilias.lancs.sch.uk

Phone - 01772 783074

Useful terminology for examinations

Statement of entry – A list of the subjects and levels candidates have been entered for. (You will find this enclosed with this booklet)

Examination Boards - St Cecilia's is using AQA, Edexcel, OCR, Cambridge Nationals and WJEC/Eduqas in summer 2025. All these exam boards have websites which you can access for further information and past papers.

Candidate Names - All candidates are entered with their full first name and their legal surname. The name on their statement of entry sheet is as it will appear on certificates.

Candidate Number - This is a four-digit number which you will find on your statement of entry. You will have to put it on every exam paper.

UCI - This is also found on the statement of entry – this is a national number for administration purposes. You do not need to remember it.

ULN - Unique Learner Number – the number which goes through life with you logging all your examination results.

Exam information



Before the examinations

Please ensure that the school office has your up to date telephone contact number.

Ensure that you let school know if you cannot attend an examination.

Make sure you have a clear (no patterns) pencil case containing your equipment and a calculator without a lid.

On the day of the examination

Students **must** be in school by **8.45am** for morning examinations and **12.30pm** for afternoon examinations. Public examinations must be started at the times published by Joint Council for Qualifications. Our timings include scheduling of administration and organising in order to start at the JCQ published time which is essential. Exams times and dates cannot be changed. Students may not leave the exam hall until the official end of the exam.

After the examinations

Results day – Thursday 21st August – you must collect your results in person. If you want us to give your results to a parent, please give them a signed letter giving your permission. They will need some identification.

Collection of Certificates – in November, we will inform you when the certificates are ready for collection from school. Please remember that schools are only obliged to keep your certificates for one year after they are issued. If you need them at a later date and have not collected them or have lost them, you will have to contact all the Exam Boards and pay about £40 per certificate.

Complaints

If you wish to make a complaint, please see St Cecilia's Complaints Policy, which is available on the school website. Written complaints and appeals procedure will cover general complaints regarding St Cecilia's delivery or administration of a qualification.

Important information



Absence from Exams

A student who absents themselves from any examination without a doctor's note should be aware that the school will seek to recover the exam fees per GCSE subject. It is in everyone's interest to ensure that the centre's examination budget is not wasted. If a student cannot attend an examination or is unable to write due to an accident, please let us know as early as possible.

Invigilators

These are external people who the school employs to conduct the Exams. Students are expected to treat them with respect and follow their instructions.

A student who does not follow instructions and adhere to the exam regulations will be reported to the Exam Board who may cancel the exam paper and award no grade in that subject.

The JCQ insists that all Examination Centres follow strict guidelines for the student's conduct in examinations. Any students who do not adhere to these regulations will have their papers cancelled. Copies of the regulations are included in this booklet and are available on our website.

Unauthorised items must not be brought into the examination room.

The Examination Boards take a very strict view on mobile phones, watches, MP3/4 players and any other potential technological/web enabled sources of information.

Any candidate found with a mobile or any other device, even if switched off can find their paper cancelled.

Wrist watches are banned from the examination room.

If candidates take any resources into the exam room which are not shown on the question paper, or on the awarding body's stationery list (including those where calculators are not allowed) it will be considered as malpractice in the same way as having any other unauthorised items.

Students must not bring notes into the examination for any reason.

Equipment and Exam Tips



Equipment required for the Exams

Students are responsible for ensuring that they have the correct equipment for their exam. This should include:

- two black pens,
- two pencils,
- ruler and eraser,
- maths equipment (compass, protractor etc.)
- coloured pencils/pens,
- calculator with no lid, when required.

Equipment should be in a clear plastic pencil case or clear plastic bag – no patterns. Equipment should not be in pockets.

Exam tips

- Candidates must not open the question paper until the examination begins.
- Always check that you have the correct exam paper before you start.
- Read all the instructions on the front of the paper.
- Hand in all work at the end of the exam. If it is rough work cross it out. If you have used extra sheets, ask for a tag to fasten them together.
- Don't take any materials out of the exam hall.
- Remain in silence until you are outside the exam hall. You will be dismissed row by row.

Remember some candidates may still be working.

Calculators



Calculators

The instructions on the question paper will say whether calculators are allowed or not.

A calculator is defined as an electronic device whose primary purpose is to carry out mathematical calculations. Where the use of calculator is allowed, candidates are responsible for making sure that their calculators meet the awarding bodies' regulations.

If you use a calculator, you must make sure it works properly, check that the batteries are working properly, clear anything stored in, remove any parts such as cases, lids or cover and do not bring into the exam room any operating instructions or prepared programs.

Calculators must be:

- of a size suitable for use on the desk;
- either battery or solar powered;
- free of lids, cases and covers which have printed instructions or formulae.

Calculators must not:

- be able to offer any of these facilities:
 - language translators;
 - symbolic algebra manipulation;
 - symbolic differentiation or integration;
 - communication with other machines or the internet;

The candidate is responsible for the following:

- the calculator's power supply;
- the calculator's working condition;
- clearing anything stored in the calculator.

Calculators must not:

- be borrowed from another candidate during an examination.
- give access to pre-stored information. This includes:
 - databanks, such as the periodic table (with the exception of scientific constants);
 - dictionaries;
 - mathematical formulae;
 - text.

General Information



Contingency planning

The awarding bodies have collectively agreed a contingency day for several years now which is always scheduled at the end of the GCSE timetables.

The contingency day is in the event of national or significant local disruption to exams in the United Kingdom, being part of the awarding bodies' standard contingency planning for exams.

For the Summer 2025 exams, the awarding bodies have included one half-day contingency sessions. This is on Wednesday 11th June 2025. The standard contingency day remains at the end of the timetable being scheduled on Wednesday 25th June 2025.

Therefore, candidates must remain available until Wednesday 25th June 2025 should an awarding body need to invoke its contingency plan.

Personal Data

The awarding bodies collect information about exam candidates. To understand what information is collected and how it is used, you must read the JCQ Information for candidates – Privacy Notice. Copy in this booklet and on our website.

Any person involved in completing examinations/assessments where malpractice is suspected, or alleged, personal data about them will be provided to the awarding body (or bodies) whose examinations/assessments are involved. Personal data about them may also be shared with other awarding bodies, the qualifications regulator or professional bodies.

St Cecilia's will provide relevant personal data including name, date of birth, gender to the awarding bodies for the purpose of examining and awarding qualifications.

Materials which are submitted by candidates for assessment may include any form of written work, audio and visual materials, computer programmes and data ("Student Materials"). Awarding bodies may use the Student Materials to evaluate candidates' performance in the relevant assessment. They may also use the Student Materials for other purposes as outlined in their privacy policies and in accordance with their terms. Please see the relevant awarding body's privacy notice if further information about how their Student Materials may be used by the awarding body.

Copyright

The copyright of any form of work created by a candidate that is submitted to an awarding body for assessment (referred to as Assessment Materials) belongs to the candidate. By submitting this work, a candidate is granting the awarding body a non-exclusive, royalty-free licence to use their assessment materials (referred to as Assessment Licence). If a candidate wishes to terminate the awarding body's rights for anything other than assessing their work, the awarding body must be notified by the centre and it is at the discretion of the awarding body whether or not to terminate such rights.

Candidates may access Student Materials (including examination scripts) through the access to scripts arrangements

Malpractice



Malpractice

To maintain the integrity of qualifications, strict regulations are in place. Malpractice means any act or practice which is in breach of the regulations. Any alleged, suspected or actual incidents of malpractice will be investigated and reported to the relevant awarding bodies. Where candidates commit malpractice, the awarding body may decide to penalise them and standard sanctions could be:

- warning
- loss of marks gained for section
- loss of all marks gained for a component
- loss of all marks gained for a unit
- disqualification from the unit
- disqualification from all units in one or more qualifications
- disqualification from the whole qualification
- disqualification from all qualifications taken in that series
- candidate debarral

Some examples of malpractice:

- Introduction of unauthorised material into the examination room
- Breaches of examination conditions
- Exchanging, obtaining, receiving, or passing on information which could be examination related (or the attempt to)
- Offences relating to the content of candidates' work
- Undermining the integrity of examinations/assessments
- Buying/asking for/sharing exam or assessment content on social media
- Passing on rumours of what's in exams or assessments on social media
- Sharing your work on social media
- Working with others so that your assessment is not your own independent work on social media
- Plagiarism
- Using computer-generated content and not referencing it

Post-results Services



Review of Results (RoR) may be requested by a candidate. The request must be processed by the school. Fees are charged for this service. In some cases the school may be prepared to meet these fees.

Centres must obtain written candidate consent for clerical re-checks and post-results reviews of marking, as with these services **candidates' marks and subject grades may be lowered.**

For the summer 2024 examination series, the request must be received by the Exam Officer at school by **Wednesday 10th September 2025.**

There are two levels of RoR available at GCSE level.

Service 1 : Clerical re-check

This service will include the following checks:

- that all parts of the script have been marked;
- the totalling of marks;
- the recording of marks;
- if requested, at extra cost a copy of the re-checked script(s) for those units/components included in the Access to Scripts service.

The outcome of the re-check will be reported along with a statement of the total marks awarded for each unit, or component, included in the enquiry.

Service 2 : Post-results review of marking

This service will include:

- the clerical re-checks detailed in Service 1;
- a review of marking
- if requested, at extra cost a copy of the reviewed script(s) for those units/components included as part of the Access to Scripts service.

The Exams Officer will inform you of the outcome of the review of results by letter.

If on Results Day, if you wish to make an enquiry about your results, please see your subject teacher or a senior member of staff. You will have to complete a form and this must be returned to the Exams officer, in school, by the deadline. A senior member of staff will be available in school from 9am to midday on Results Day.



Questions Students and Guardians ask

Q – What do I do if a subject is missing or a level is wrong on my Statement of Entry?

A - See your class teacher as soon as possible.

Q – What do I do if I am timetabled for two exams at the same time?

A – The Exams Officer will arrange for you to sit one exam, then have a supervised break before the next exam.

Q – What do I do if I am running late for an exam?

A – Telephone school and let the office know your approximate time of arrival. Come straight to the exam hall and you will sit the paper. If you are very late it is up to the Exam Board whether they award a grade.

Q – What do I do if I am ill the morning of an exam?

A – Telephone school and let the office know. The Exams Officer will inform you what evidence is needed.

Q – What do I do if I have forgotten the centre number or candidate number?

A – Look on the slip on your desk in the Exam Hall.

Q – What do I do if I have an accident and can't write?

A – Telephone school and let the Exams Officer know as soon as possible so that arrangements can be made for a scribe/laptop.

Q - What do I do if I think I have the wrong paper?

A – Put up your hand for an invigilator.

Q – What is Special Consideration?

A – This is an application by the Exams Officer for a very small adjustment to the final grade of a candidate who has been affected by adverse circumstances beyond their control. (This could be serious illness, accident, bereavement or domestic crisis).

Q - What do I do if I feel ill during the exam?

A – Put up your hand and an invigilator will come to you.

Q - Can I go to the toilet during the exam?

A - Not unless you are ill.

Q - I am entitled to a bilingual dictionary can I bring my own?

A – No, at the beginning of the exam ask an invigilator for one.

I hope you find this booklet useful.

Please keep it in a safe place so that you can refer to it throughout the GCSE course and examinations.

Appeals against internal assessment decisions (centre assessed marks)

Certain qualifications contain components/units of non-examination assessment, controlled assessment and/or coursework which are internally assessed (marked) by centres and internally standardised. The marks awarded (the internal assessment decisions) which contribute to the final grade of the qualification are then submitted by the deadline set by the awarding body for external moderation.

This procedure confirms St Cecilia's RC High School's compliance with JCQ's **General Regulations for Approved Centres** (section 5.7) that the centre will:

- have in place for inspection that must be reviewed and updated annually, a written internal appeals procedure relating to internal assessment decisions and to ensure that details of this procedure are communicated, made widely available and accessible to all candidates
- before submitting marks to the awarding body inform candidates of their centre assessed marks and allow a candidate to request a review of the centre's marking

St Cecilia's is committed to ensuring that whenever its staff mark candidates' work this is done fairly, consistently and in accordance with the awarding body's specification and subject-specific associated documents.

Candidates' work will be marked by staff who have appropriate knowledge, understanding and skill, who have been trained in this activity and do not have any potential conflicts of interest. If AI tools have been used to assist in the marking of candidates' work, they will not be the sole marker. St Cecilia's is committed to ensuring that work produced by candidates is authenticated in line with the requirements of the awarding body. Where more than one teacher is involved in marking candidates' work, internal moderation and standardisation will ensure consistency of marking.

On being informed of their centre assessed marks, if a candidate believes that the above procedures were not followed in relation to the marking of their work, or that the assessor has not properly applied the marking standards to the marking, then the candidate may make use of the appeals procedure below to consider whether to request a review of the centre's marking.

St Cecilia's will:

1. ensure that candidates are informed of their centre assessed marks so that they may request a review of the centre's marking before marks are submitted to the awarding body
2. inform candidates that they will need to explain on what grounds they wish to request a review of an internally assessed mark as a review will only focus on the quality of work submitted
3. inform candidates that they may request copies of materials to assist them in considering whether to request a review of the centre's marking of the assessment
4. having received a request for copies of materials, promptly make them available to the candidate
5. inform candidates they will not be allowed access to original assessment material, including artefacts, unless supervised
6. provide candidates with sufficient time, normally at least 5 working days, to allow them to review copies of materials and reach a decision
7. provide a clear deadline for candidates to submit a request for a review of the centre's marking. Requests will not be accepted after this deadline. Requests must be made in writing within 3 working days of receiving copies of the requested materials and candidates must explain on what grounds they wish to request a review

8. allow sufficient time for the review to be carried out, to make any necessary changes to marks and to inform the candidate of the outcome, all before the awarding body's deadline for the submission of marks
9. ensure that the review of marking is conducted by an assessor who has appropriate competence, has had no previous involvement in the assessment of that candidate and has no personal interest in the review
10. instruct the reviewer to ensure that the candidate's mark is consistent with the standard set by the centre
11. inform the candidate in writing of the outcome of the review of the centre's marking

The outcome of the review of the centre's marking will be made known to the head of centre who will have the final decision if there is any disagreement on the mark to be submitted to the awarding body. A written record of the review will be kept and made available to the awarding body upon request.

The awarding body will be informed if the centre does not accept the outcome of a review.

The moderation process carried out by the awarding body may result in a mark change, either upwards or downwards, even after an internal review. The internal review process is in place to ensure consistency of marking within the centre, whereas moderation by the awarding body ensures that centre marking is in line with national standards. The mark submitted to the awarding body is subject to change and should therefore be considered provisional.

Appeals against decisions to reject a candidate's work on the grounds of malpractice

The JCQ [Information for candidates documents](#) (Coursework, Non-examination assessments, Social media) which are distributed to all candidates prior to relevant assessments taking place, inform candidates of the things they must and must not do when they are completing their work.

St Cecilia's RC High School ensures that those members of teaching staff involved in the direct supervision of candidates producing work for assessments are aware of the potential for malpractice.

Malpractice by a candidate discovered in a controlled assessment, coursework or non-examination assessment component prior to the candidate signing the declaration of authentication does not need to be reported to the awarding body but will be dealt with in accordance with the centre's internal procedures. The only exception to this is where the awarding body's confidential assessment material has potentially been breached. The breach will be reported to the awarding body immediately.

If there are doubts about the authenticity of the work of a candidate or irregularities are identified in a candidate's work before the candidate has signed the declaration of authentication/authentication statement (where required) and malpractice is suspected, St Cecilia's will:

- follow the authentication procedures and/or malpractice instructions in the relevant JCQ document (*Instructions for conducting non-examination assessments/Instructions for conducting coursework*) and any supplementary guidance that may be provided by the awarding body. Where this may lead to the decision to **not** accept the candidate's work for assessment or to reject a candidate's coursework on the grounds of malpractice, the affected candidate will be informed of the decision.

If a candidate who is the subject of the decision disagrees with the decision:

- a written request, setting out as clearly and concisely as possible the grounds for the appeal including any further evidence relevant to supporting the appeal, should be submitted

The appellant will be informed of the outcome of the appeal.

Appeals relating to centre decisions not to support an application for a clerical re-check, a review of marking, a review of moderation or an appeal

This procedure confirms St Cecilia's RC High School's compliance with JCQ's **General Regulations for Approved Centres** (section 5.13) that the centre will:

- have available for inspection purposes and draw to the attention of candidates and their parents/carers, a written internal appeals procedure to manage disputes when a candidate disagrees with a centre decision not to support an application for a clerical re-check, a review of marking, a review of moderation or an appeal

Following the issue of results, awarding bodies make post-results services available. Full details of these services, internal deadlines for requesting a service and fees charged are provided by the exams officer.

Candidates are also made aware of the arrangements for post-results services prior to the issue of results. Candidates are also informed of the periods during which senior members of centre staff will be available immediately after the publication of results so that results may be discussed, and decisions made on the submission of reviews of marking. Candidates are made aware of this information in the Exam booklet issued with the candidates' Statement of Entry.

If the centre or a candidate (or their parent/carer) has a concern and believes a result may not be accurate, post-results services may be considered.

The JCQ post-results services currently available are detailed below.

Reviews of Results (RoRs):

- Service 1 (Clerical re-check)
This is the only service that can be requested for objective tests (multiple choice tests)
- Service 2 (Review of marking)
- Service 3 (Review of moderation)
This service is not available to an individual candidate

Access to Scripts (ATS):

- Copies of scripts to support reviews of marking
- Copies of scripts to support teaching and learning

Where a concern is expressed that a particular result may not be accurate, the centre will look at the marks awarded for each component part of the qualification alongside any mark schemes, relevant result reports, grade boundary information etc. when made available by the awarding body to determine if the centre supports any concerns.

Written candidate consent is required in all cases before a request for a RoR service 1 or 2 is submitted to the awarding body. Consent is required to confirm the candidate understands that the final subject grade and/or mark awarded following a clerical re-check or a review of marking, and any subsequent appeal, may be lower than, higher than, or the same as the result which was originally awarded. Candidate consent must only be collected after the publication of results.

Where a candidate disagrees with a centre decision not to support a clerical re-check, a review of marking or a review of moderation, the centre will advise the candidate they may request the review by providing informed written consent (and the required fee) for this service to the centre by the deadline set by the centre.

If the candidate (or their parent/carer) believes there are grounds to appeal against the centre's decision not to support a review of results, an internal appeal can be submitted to the centre.

Following the RoR outcome, an external appeals process is available if the head of centre remains dissatisfied with the outcome and believes there are grounds for appeal. The JCQ publications **Post-Results Services** and **JCQ Appeals Booklet** (A guide to the awarding bodies' appeals processes) will be consulted to determine the acceptable grounds for a preliminary appeal.

Where the head of centre is satisfied after receiving the RoR outcome, but the candidate (or their parent/carer) believes there are grounds for a preliminary appeal to the awarding body, a further internal appeal may be made to the head of centre. Following this, the head of centre's decision as to whether to proceed with a preliminary appeal will be based upon the acceptable grounds as detailed in the **JCQ Appeals Booklet**. Candidates or parents/carers are not permitted to make direct representations to an awarding body.



Joint Council for
Qualifications^{CIC}

Information for candidates

Written examinations

With effect from 1 September 2024

Produced on behalf of:



©JCQ^{CIC} 2024

**This document has been written to help you.
Read it carefully and follow the instructions.**

If there is anything you do not understand, especially which calculator you may use, ask your teacher.

A. Regulations – Make sure you understand the rules

- 1 Be on time for all your exams. If you are late, your work might not be accepted.
- 2 **Do not** become involved in any unfair or dishonest practice during the exam.
- 3 If you try to cheat, or break the rules in any way, you could be disqualified from all your exams.
- 4 You **must not** take into the exam room:
 - (a) notes;
 - (b) AirPods, Earphones/Earbuds, an iPod, a mobile phone, a MP3/4 player or similar device, a watch, smart glasses or any other smart device.

Any pencil cases taken into the exam room **must** be see-through.

Remember: possession of unauthorised material is breaking the rules, even if you do not intend to use it, and you will be subject to penalty and possible disqualification.

- 5 If you have a watch, the invigilator will ask you to hand it to them.
- 6 **Do not** use correcting pens, fluid or tape, erasable pens, highlighters or gel pens in your answers.
- 7 **Do not** talk to or try to communicate with, or disturb other candidates once you have entered the exam room.
- 8 You **must not** write inappropriate, obscene or offensive material.
- 9 If you leave the exam room unaccompanied by an invigilator before the exam has finished, you **will not** be allowed to return.
- 10 **Do not** borrow anything from another candidate during the exam.

B. Information – Make sure you attend your exams and bring what you need

- 1 Know the dates and times of all your exams. Arrive at least ten minutes before the start of each exam.
- 2 If you arrive late for an exam, report to the invigilator running the exam.
- 3 If you arrive more than one hour after the published starting time for the exam, you may not be allowed to take it.
- 4 Only take into the exam room the pens, pencils, erasers and any other equipment which you need for the exam.
- 5 You **must** write clearly and in black ink. Coloured pencils or inks may only be used for diagrams, maps, charts, etc. unless the instructions printed on the front of the question paper state otherwise.

C. Calculators, dictionaries and computer spell-checkers

- 1 You may use a calculator unless you are told otherwise.
- 2 If you use a calculator:
 - (a) make sure it works properly; check that the batteries are working properly;
 - (b) clear anything stored in it;
 - (c) remove any parts such as cases, lids or covers which have printed instructions or formulae;
 - (d) **do not** bring into the exam room any operating instructions or prepared programs.
- 3 **Do not** use a dictionary or computer spell checker unless you are told otherwise.

D. Instructions during the exam

- 1 Always listen to the invigilator. Always follow their instructions.
- 2 Tell the invigilator at once if:
 - (a) you think you have not been given the right question paper or all of the materials listed on the front of the paper;
 - (b) the question paper is incomplete or badly printed.
- 3 Read carefully and follow the instructions printed on the question paper and/or on the answer booklet.
- 4 **Do not** start writing anything until the invigilator tells you to fill in all the details required on the front of the question paper and or the answer booklet. **Do not** open the question paper until you are told that the exam has begun.
- 5 Remember to write your answers within the designated sections of the answer booklet.
- 6 Do your rough work on the proper exam stationery. Cross it through and hand it in with your answers.
Make sure you add your candidate details to any additional answer sheets that you use, including those used for rough work.

E. Advice and assistance

- 1 If on the day of the exam you feel that your work may be affected by ill health or any other reason, tell the invigilator.
- 2 Put up your hand during the exam if:
 - (a) you have a problem and are not sure about what you should do;
 - (b) you do not feel well;
 - (c) you need more paper.
- 3 **You must** not ask for, and will not be given, any explanation of the questions.

F. At the end of the exam

- 1 If you have used more than one answer booklet and/or any supplementary answer sheets, place them in the correct order.

Place any loose additional answer sheets inside your answer booklet. Make sure you add your candidate details to any additional answer sheets that you use. For CCEA examinations, any loose additional answer sheets should be placed **behind** your script.

- 2 **Do not** leave the exam room until told to do so by the invigilator.
- 3 **Do not** take any stationery from the exam room. This includes the question paper, answer booklets used or unused, rough work or any other materials provided for the exam.



Joint Council for
Qualifications^{CIC}

Information for candidates

Coursework assessments

Effective from 1 September 2024

Produced on behalf of:



©JCQ^{CIC} 2024

This document tells you about some things that you **must** and **must not** do when you are completing coursework.

When you submit your work for marking, you will be asked to sign an authentication statement confirming that you have read and followed these regulations.

If there is anything that you do not understand, you **must** ask your teacher.

In some subjects you will have an opportunity to do some independent research into a topic. The research you do may involve looking for information in published sources such as textbooks, encyclopedias, journals, TV, radio and on the internet.

You can demonstrate your knowledge and understanding of a subject by using information from sources or generated from sources which may include the internet and AI. Remember, though, information from these sources may be incorrect or biased. You **must** take care how you use this material - you **cannot** copy it and claim it as your own work.

The regulations state that:

'the work which you submit for assessment **must** be your own';

'you **must not** copy from someone else or allow another candidate to copy from you'.

If you use the same wording as a published source, you **must** place quotation marks around the passage and state where it came from. This is called 'referencing'. You **must** make sure that you give detailed references for everything in your work which is not in your own words. A reference from a printed book or journal should show the name of the author, the year of publication and the page number, for example: (Morrison, 2000, p29).

For material taken from the internet, your reference should show the date when the material was downloaded and **must** show the precise web page, not the search engine used to locate it. This can be copied from the address line. For example: http://news.bbc.co.uk/onthisday/hi/dates/stories/october/28/newsid_2621000/2621915.stm, downloaded 5 February 2025.

Where computer-generated content has been used (such as an AI Chatbot), your reference **must** show the name of the AI bot used and should show the date the content was generated. For example: ChatGPT 3.5 (<https://openai.com/blog/chatgpt/>), 25/01/2025. You **must** submit a copy of the computer-generated content with your work for reference and authentication purposes.

You may be required to produce a bibliography at the end of your work. This **must** list the full details of publications you have used in your research, even where these are not directly referred to, for example: Curran, J. *Mass Media and Society* (Hodder Arnold, 2005).

If you copy the words, ideas or outputs of others and do not show your sources in references and a bibliography, this will be considered as cheating.

Preparing your coursework – good practice

If you receive help and guidance from someone other than your teacher, you **must** tell your teacher. They will then record the nature of the assistance given to you.

Your parent/carer may provide you with access to resource materials and discuss your coursework with you. However, they **must not** give you direct advice on what should or should not be included.

If you worked as part of a group on an assignment, you **must** each write up your own account of the assignment. Even if the data you have is the same, the description of how that data was obtained and the conclusions you draw from it should be in your own words.

You **must** meet the deadlines that your teacher gives you. Remember – your teachers are there to guide you. Although they cannot give you direct assistance, they can help you to sort out any problems before it is too late.

Take care of your work and keep it safe. **Don't** leave it lying around where your classmates can find it. **Don't** share it with anyone, including posting it on social media. You **must always** keep your work secure and confidential. If it is stored on the computer network, keep your password secure. Collect all copies from the printer and destroy those you do not need.

Don't be tempted to use any pre-prepared or generated online solutions and try to pass them off as your own work – this is cheating. Electronic tools used by awarding bodies can detect this sort of copying.

You **must not** write inappropriate, offensive or obscene material.

Plagiarism

Plagiarism involves taking someone else's words, thoughts, ideas or outputs and trying to pass them off as your own. **It is a form of cheating which is taken very seriously.**

Don't think you won't be caught; there are many ways to detect plagiarism.

- Markers can spot changes in the style of writing and use of language.
- Markers are highly experienced subject specialists who are very familiar with work on the topic concerned - they may have read the source you are using, or even marked the work you have copied from!
- Internet search engines and specialised computer software can be used to match phrases or pieces of text with original sources. They can detect changes in the grammar and style of writing or punctuation.

Penalties for breaking the regulations

If it is discovered that you have broken the rules, one of the following penalties will be applied:

- you will be awarded zero marks for your work;
- you will be disqualified from that unit for that examination series;
- you will be disqualified from the whole subject for that examination series;
- you will be disqualified from all subjects and barred from entering again for a period of time.

The awarding body will decide which penalty is appropriate.

REMEMBER - IT'S YOUR QUALIFICATION SO IT NEEDS TO BE YOUR OWN WORK



Joint Council for
Qualifications^{CIC}

Information for candidates

Non-examination assessments

Effective from 1 September 2024

Produced on behalf of:



©JCQ^{CIC} 2024

This document tells you about some things that you **must** and **must not** do when you are completing your work.

When you submit your work for marking, the awarding body will normally require you to sign an authentication statement confirming that you have read and followed the regulations.

If there is something that you do not understand, you **must** ask your teacher.

Preparing your work – good practice

If you receive help and guidance from someone other than your teacher, you **must** tell your teacher. They will then record the assistance given to you.

If you worked as part of a group on an assignment, for example undertaking field research, you **must** write up your own account of the assignment. Even if the data you have is the same, you **must** describe in your own words how that data was obtained. You **must draw your own conclusions from the data**.

You **must** meet the deadlines that your teacher gives you. Remember – your teachers are there to guide you. Although they cannot give you direct assistance, they can help you to sort out any problems before it is too late.

Take care of your work and keep it safe. **Do not** leave it lying around where your classmates can find it. **Do not** share it with anyone, including posting it on social media. You must always keep your work secure and confidential. If it is stored on the computer network, keep your password secure. Collect all copies from the printer and destroy those you do not need.

Do not be tempted to use any pre-prepared or generated online solutions and try to pass them off as your own work – this is cheating. Electronic tools used by awarding bodies can detect this sort of copying.

You **must not** write inappropriate, offensive or obscene material.

Research and using references

In some subjects you will have an opportunity to do some independent research into a topic.

The research you do may involve looking for information in published sources such as textbooks, encyclopedias, journals, TV, radio and on the internet.

You can demonstrate your knowledge and understanding of a subject by using information from sources or generated from sources which may include the internet and AI. Remember, though, information from these sources may be incorrect or biased. You **must** take care how you use this material - you cannot copy it and claim it as your own work.

Using information from published sources (including the internet) as the basis for your assignment is a good way to demonstrate your knowledge and understanding of a subject. You **must** take care how you use this material though - you **cannot** copy it and claim it as your own work.

The regulations state that:

'the work which you submit for assessment **must** be your own';

'you **must not** copy from someone else or allow another candidate to copy from you'.

When producing a piece of work, if you use the same wording as a published source, you **must** place quotation marks around the passage and state where it came from. This is known as **referencing**. You **must** make sure that you give detailed references for everything in your work which is not in your own words. A reference from a printed book or journal should show the name of the author, the year of publication and the page number, for example: Morrison, 2000, p29.

For material taken from the internet, your reference should show the date when the material was downloaded and **must** show the precise web page, not the search engine used to locate it. This can be copied from the address line. For example: http://news.bbc.co.uk/onthisday/hi/dates/stories/october/28/newsid_2621000/2621915.stm, downloaded 5 February 2025.

Where computer-generated content has been used (such as an AI Chatbot), your reference **must** show the name of the AI bot used and should show the date the content was generated. For example: ChatGPT 3.5 (<https://openai.com/blog/chatgpt/>), 25/01/2025. You **must** submit a copy of the computer-generated content with your work for reference and authentication purposes.

You may be required to include a bibliography at the end of your piece of written work. Your teacher will tell you whether this is necessary. Where required, your bibliography **must** list the full details of publications you have used in your research, even where these are not directly referred to, for example: Curran, J. *Mass Media and Society* (Hodder Arnold, 2005).

If you copy the words, ideas or outputs of others and do not show your sources in references and a bibliography, this will be considered as cheating.

Plagiarism

Plagiarism involves taking someone else's words, thoughts, ideas or outputs and trying to pass them off as your own. **It is a form of cheating which is taken very seriously.**

Don't think you won't be caught; there are many ways to detect plagiarism.

- Markers can spot changes in the style of writing and use of language.
- Markers are highly experienced subject specialists who are very familiar with work on the topic concerned — they may have read the source you are using, or even marked the work you have copied from!
- Internet search engines and specialised computer software can be used to match phrases or pieces of text with original sources and to detect changes in the grammar and style of writing or punctuation.

Penalties for breaking the regulations

If it is discovered that you have broken the regulations, one of the following penalties will be applied:

- you will be awarded zero marks for your work;
- you will be disqualified from that component for the examination series in question;
- you will be disqualified from the whole subject for that examination series;
- you will be disqualified from all subjects and barred from entering again for a period of time.

The awarding body will decide which penalty is appropriate.

REMEMBER - IT'S YOUR QUALIFICATION SO IT NEEDS TO BE YOUR OWN WORK.



Joint Council for
Qualifications^{CIC}

Information for candidates

On-screen tests

With effect from 1 September 2024

Produced on behalf of:



©JCQ^{CIC} 2024

**This document has been written to help you.
Read it carefully and follow the instructions.**

If there is anything you do not understand ask your teacher.

A. Regulations – Make sure you understand the rules

- 1 Be on time for your on-screen test(s). If you are late, your work might not be accepted.
- 2 **Do not** become involved in any unfair or dishonest practice during the on-screen test.
- 3 If you try to cheat, or break the rules in any way, you could be disqualified from all your exams.
- 4 Only take into the exam room the materials and equipment which are allowed.
- 5 You **must not** take into the exam room:
 - (a) notes;
 - (b) AirPods, Earphones/Earbuds, an iPod, a mobile phone, a MP3/4 player or similar device, a watch, smart glasses or any other smart device.

Unless you are told otherwise, you **must not** have access to:

- (c) the internet, email, data stored on the hard drive, or portable storage media such as floppy disks, CDs and memory sticks;
- (d) pre-prepared templates.

Remember: possession of unauthorised material is breaking the rules, even if you do not intend to use it, and you will be subject to penalty and possible disqualification.

- 6 If you have a watch, the invigilator will ask you to hand it to them.
- 7 **Do not** talk to or try to communicate with or disturb other candidates once you have entered the exam room.
- 8 If you leave the exam room unaccompanied by an invigilator before the on-screen test has finished, you **will not** be allowed to return.
- 9 **Do not** borrow anything from another candidate during the on-screen test.

B. Information – Make sure you attend your on-screen test and bring what you need

- 1** Know the date and time of your on-screen test(s). Arrive at least ten minutes before the start of your on-screen test.
- 2** If you arrive late for an on-screen test, report to the invigilator running the test.
- 3** If you arrive more than one hour after the published starting time for the on-screen test, you may not be allowed to take it.
- 4** Your centre will inform you of any equipment which you may need for the on-screen test.

C. Calculators, dictionaries and computer spell-checkers

- 1 You may use a calculator unless you are told otherwise.
- 2 If you use a calculator:
 - (a) make sure it works properly; check that the batteries are working properly;
 - (b) clear anything stored in it;
 - (c) remove any parts such as cases, lids or covers which have printed instructions or formulae;
 - (d) **do not** bring into the examination room any operating instructions or prepared programs.
- 3 **Do not** use a dictionary or computer spell checker unless you are told otherwise.

D. Instructions during the on-screen test

- 1 Always listen to the invigilator. Always follow their instructions.
- 2 Tell the invigilator at once if:
 - (a) you have been entered for the wrong on-screen test;
 - (b) the on-screen test is in another candidate's name;
 - (c) you experience system delays or any other IT issues.
- 3 You may be given a question paper or the instructions may be on screen. In either case, read carefully and follow the instructions. **Do not** open the question paper until you are told that the exam has begun.

E. Advice and assistance

- 1 If on the day of the on-screen test you feel that your work may be affected by ill health or any other reason, tell the invigilator.
- 2 Put up your hand during the on-screen test if:
 - (a) you have a problem with your computer and are not sure what you should do;
 - (b) you do not feel well.
- 3 You **must not** ask for, and will not be given, any explanation of the questions.

F. At the end of the on-screen test

- 1 Ensure that the software closes at the end of the on-screen test.
- 2 If you are required to print off work outside the time allowed for the on-screen test, ensure that you collect your own work. You **must not** share your work with other candidates. Make sure that another candidate does not collect your printout(s).
- 3 **Do not** leave the exam room until told to do so by the invigilator.
- 4 **Do not** take any stationery from the exam room. This includes rough work, printouts or any other materials provided for the on-screen test.

While we like to share our experiences online, when it comes to exams and other assessments, we have to be careful.

- Sharing ideas online can be helpful when you're studying or revising
- However, sharing certain information (see information on the right) can break the rules and could affect your results
- If you're not sure what you can and can't discuss online, check with your teacher
- If you receive exam content on social media, you must tell your teacher
- Don't be caught out by scammers selling fake exam papers



Things to do on social media:

- Have fun
- Be responsible
- Report any exam or assessment content you see to your teacher

Things not to do on social media:

- Buy/ask for/share exam or assessment content
- Pass on rumours of what's in exams or assessments
- Share your work
- Work with others so that your assessment is not your own independent work

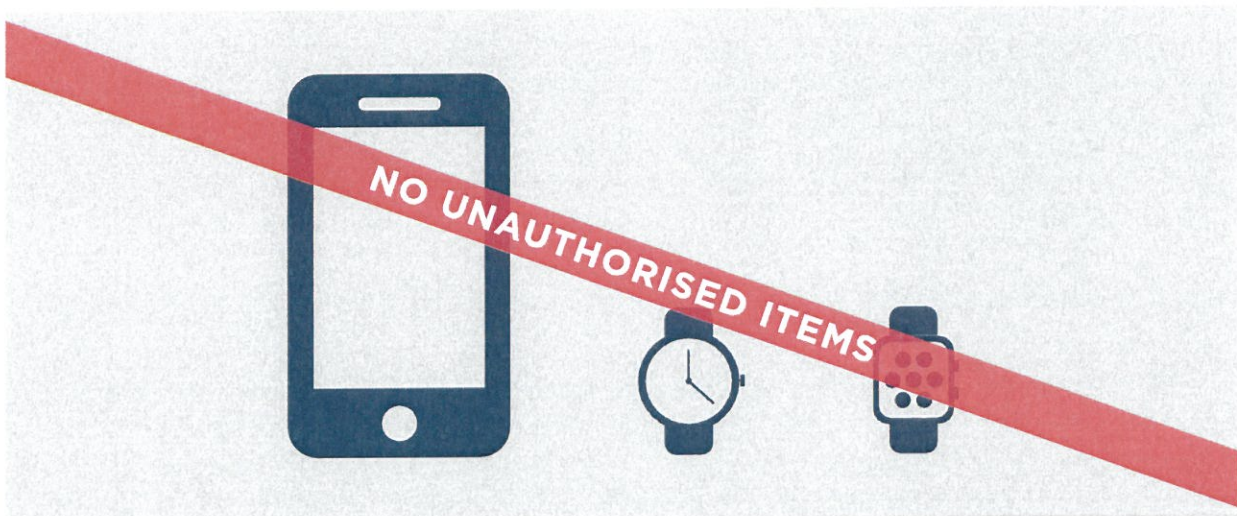
If you do any of the above activities, you may:

- Receive a written warning
- Lose marks
- Be disqualified from a part of or all of your qualifications
- Be banned from taking exams and assessments for a number of years

Please take the time to familiarise yourself with the JCQ rules:
jcq.org.uk/exams-office/information-for-candidates-documents

NO MOBILE PHONES NO WATCHES

NO POTENTIAL TECHNOLOGICAL/WEB
ENABLED SOURCES OF INFORMATION



Possession of unauthorised items, such as a mobile phone
or any watch, is a serious offence and could result in

DISQUALIFICATION

from your examination and your overall qualification.

This poster must be displayed in a prominent place outside each examination room.

Warning to candidates



 Questions matter AQA	 City & Guilds	 Rewarding Learning CCEA	 Oxford Cambridge and RSA OCR	 Pearson	 WJEC
---	---	--	---	---	--



1

You **must** be on time for all your examinations.

2

Possession of a mobile phone or other unauthorised material **is not allowed** even if you do not intend to use it. You will be subject to penalty and possible disqualification from the exam/qualification.

3

You **must not** talk to, attempt to communicate with or disturb other candidates once you have entered the examination room.

4

You **must** follow the instructions of the invigilator.

5

You **must not** sit an examination in the name of another candidate.

6

You **must not** become involved in any unfair or dishonest practice in any part of the examination.

7

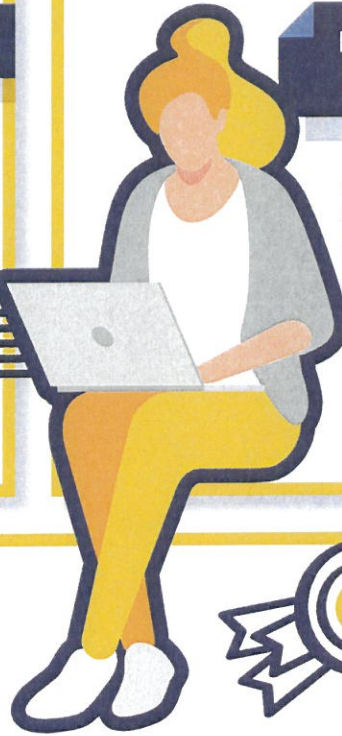
If you are confused about anything, only speak to an invigilator.

The *Warning to candidates* must be displayed in a prominent place outside each examination room. This may be a hard copy A3 paper version or an image of the poster projected onto a wall or screen for all candidates to see.



What is AI?

- AI stands for artificial intelligence and using it is like having a computer that thinks
- AI tools like ChatGPT or Snapchat My AI can write text, make art and create music by learning from data from the internet, but watch out – they can also make things up and be biased



How can AI be misused in assessments?

AI misuse is when you take something made using AI and say it's your own work.

THIS IS CHEATING!



How do I make sure I don't misuse AI?



1 Know the rules

- You're **not allowed** to use AI tools when you're in an exam
- Your teachers will tell you if you're allowed to use AI tools when doing your coursework – the rules will depend on your qualification
- Even if you're allowed to use AI tools, you can't get marks for content just produced by AI – your marks come from showing your own understanding and producing your own work

2 Reference reference reference!

- If you're allowed to use AI tools, you must reference them clearly
- Name the AI tool you used
 - Add the date you generated the content
 - Explain how you used it
 - Save a screenshot of the questions you asked and the answers you got

3 Declare it's all your own work

– When you hand in your assessment, you have to sign a declaration. Anything without a reference must be all your own work. If you've used an AI tool, don't sign the declaration until you're sure you've added all the references

What happens if I misuse AI?

If you've misused AI, you could lose your marks for the assessment – you could even be disqualified from the subject.

DON'T RISK IT!



REMEMBER
Misusing AI is cheating!

Know the rules

Talk to your teachers

Reference clearly



St Cecilia's
R. C. High School



