

The background is a dark purple space-themed scene. It features various celestial elements: several white stars of different sizes and shapes, a red spiral galaxy in the top left, a purple and blue nebula in the top right, a red spiral galaxy in the bottom right, and several blue and red spiral patterns scattered throughout. The word "PORTAL" is centered in a large, white, italicized font. The letter 'O' is replaced by a stylized blue and green portal or wormhole.

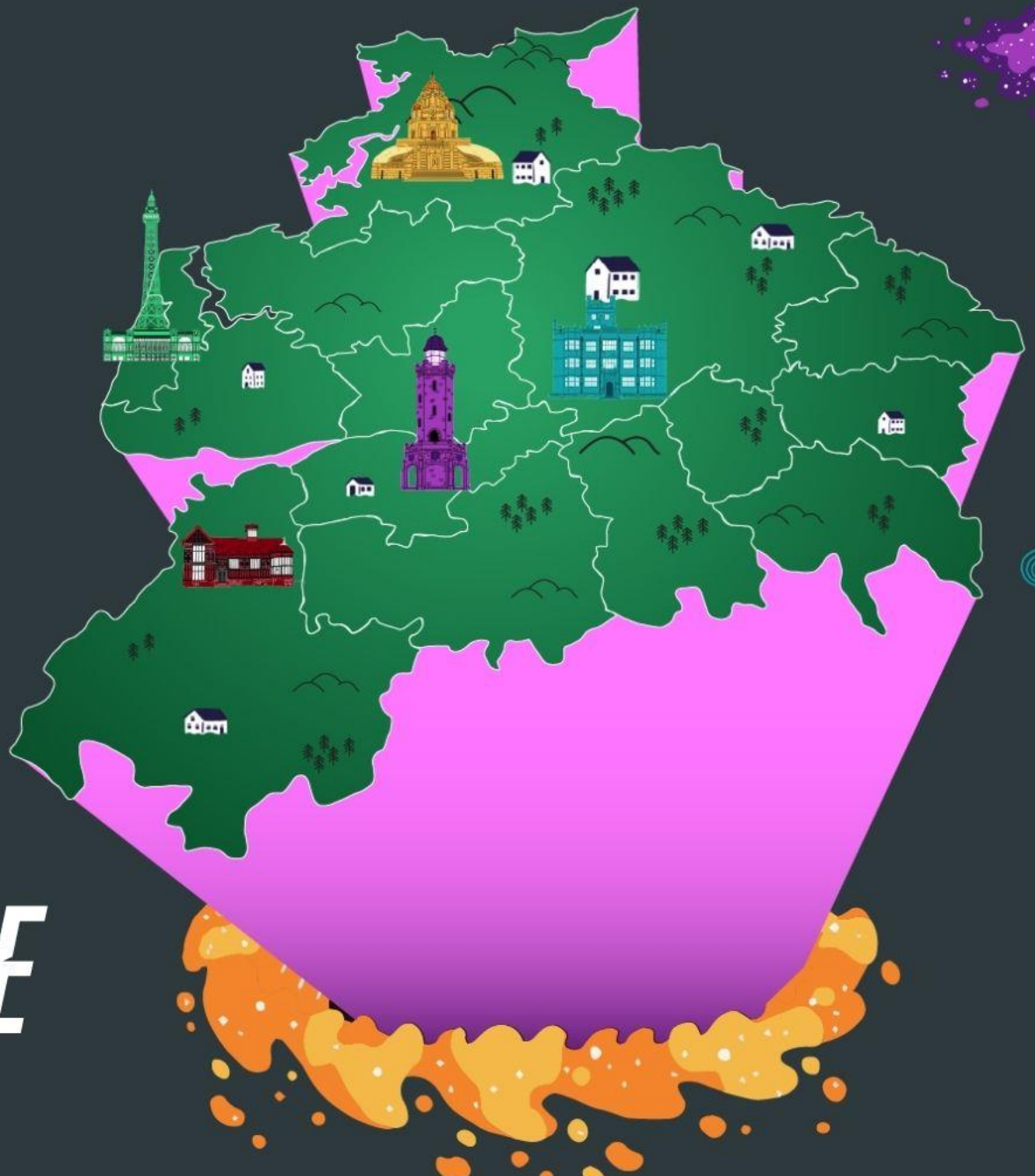
# *PORTAL*

EXPLORE THE FUTURE OF JOBS IN PRESTON, CHORLEY AND SOUTH RIBBLE



# PORTAL

EXPLORE THE FUTURE OF JOBS IN PRESTON, CHORLEY AND SOUTH RIBBLE

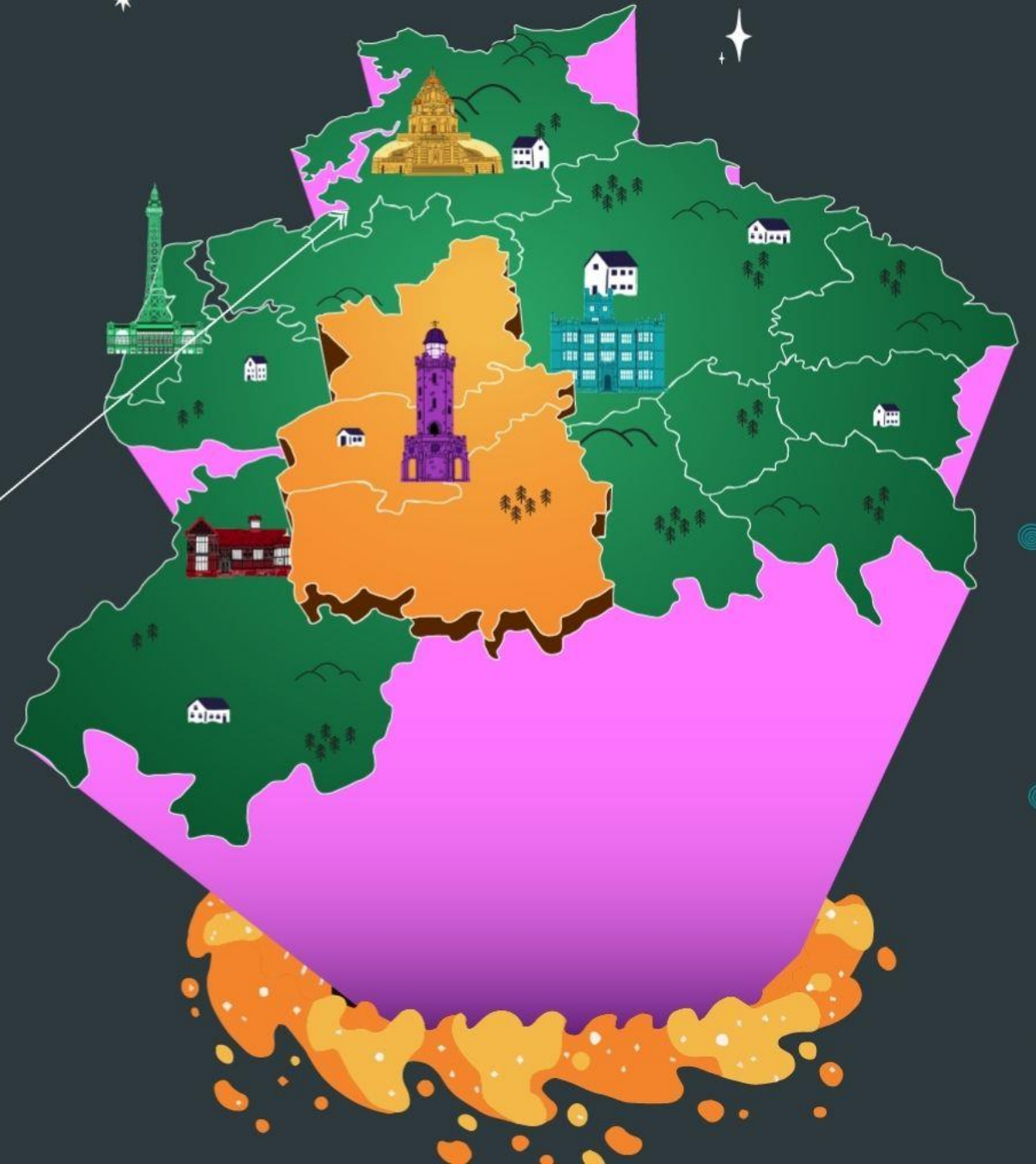


***THIS IS LANCASHIRE***

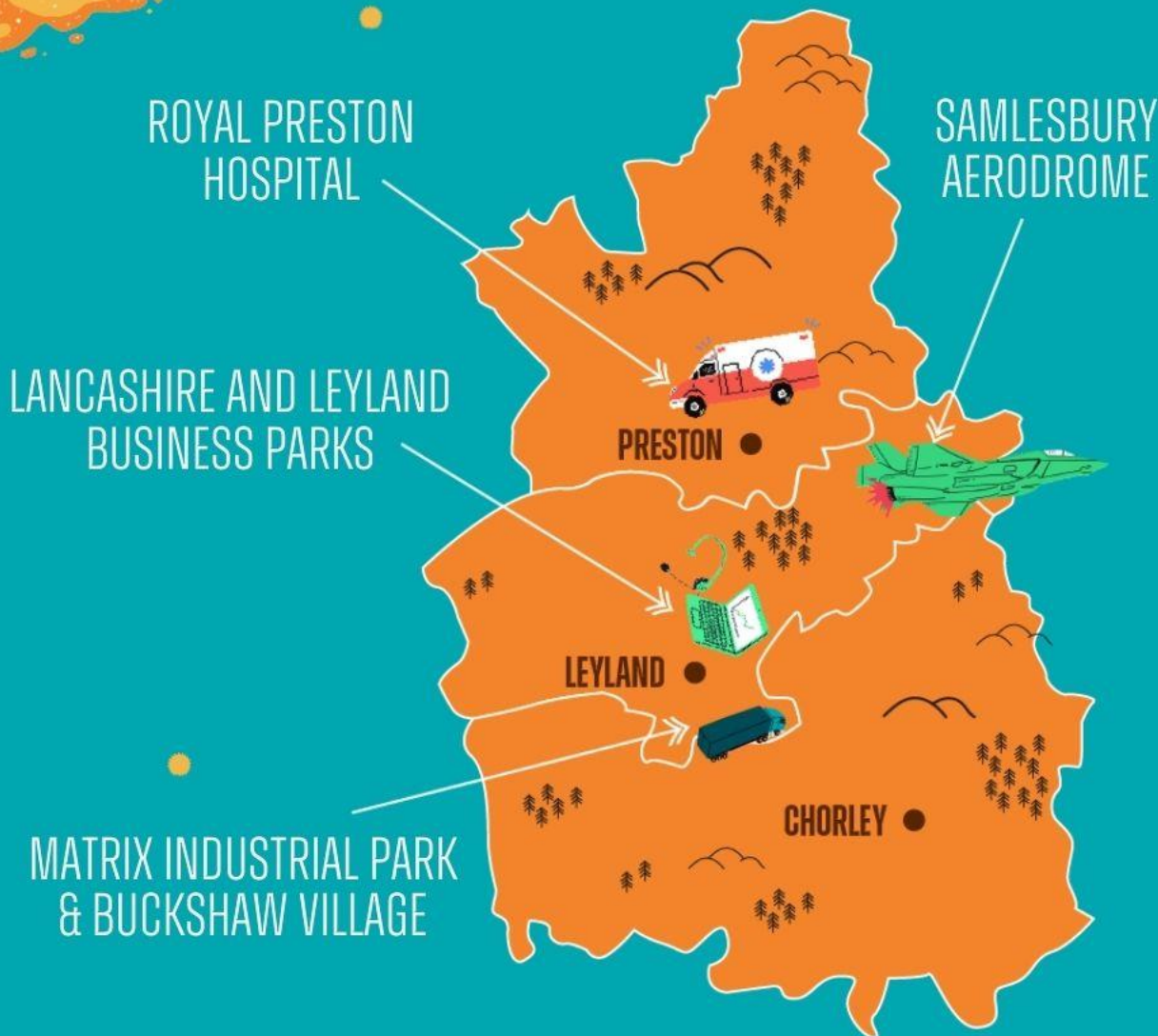


# *THIS IS YOUR TRAVEL TO WORK AREA*

PRESTON, CHORLEY AND SOUTH RIBBLE  
CATCHY, RIGHT?



# THIS IS PRESTON, CHORLEY AND SOUTH RIBBLE





# EMPLOYERS IN LANCASHIRE



ADVANCED MANUFACTURING



FOOD AND AGRICULTURE



CONSTRUCTION



ENERGY AND LOW CARBON



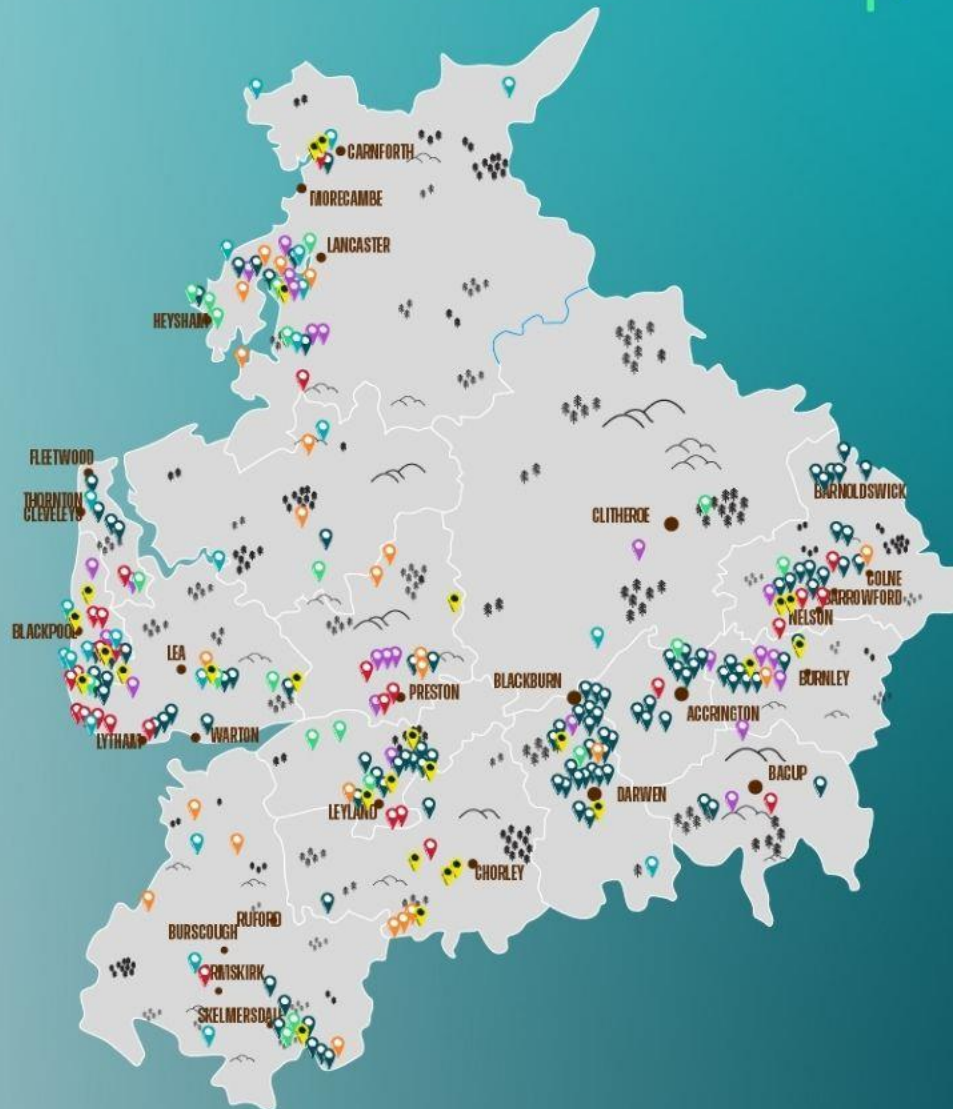
HEALTH AND SOCIAL CARE



CREATIVE AND DIGITAL



TOURISM AND CULTURE



# EMPLOYERS IN YOUR AREA

PRESTON, CHORLEY AND SOUTH RIBBLE

ADVANCED MANUFACTURING

FOOD AND AGRICULTURE

CONSTRUCTION

ENERGY AND LOW CARBON

HEALTH AND SOCIAL CARE

CREATIVE AND DIGITAL

TOURISM AND CULTURE





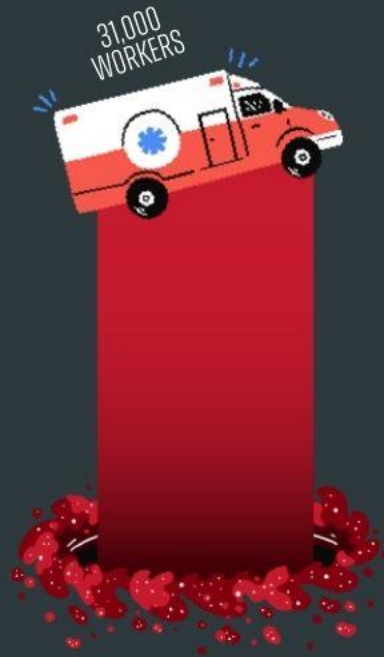
EMPLOYMENT SECTORS | PRESTON, CHORLEY AND SOUTH RIBBLE

# TOP 5 JOB TYPES PEOPLE ARE DOING NOW



17%

RETAIL & WHOLESALE



16%

HEALTH & SOCIAL CARE



10%

CONSTRUCTION



9%

BUSINESS SUPPORT



8%

MANUFACTURING



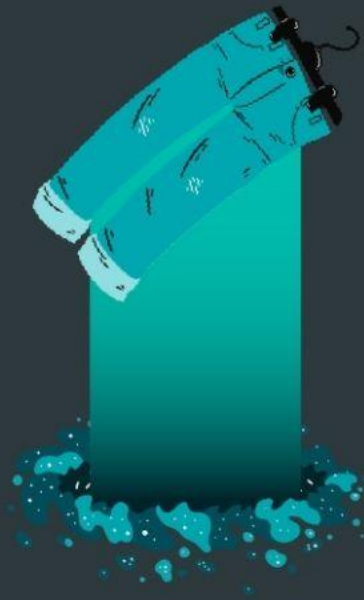
EMPLOYMENT SECTORS | PRESTON, CHORLEY AND SOUTH RIBBLE

# TOP 5 JOB TYPES PEOPLE WILL BE DOING IN 2036



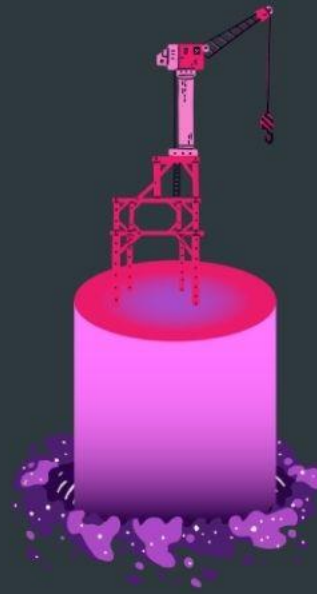
18%

HEALTH &  
SOCIAL CARE



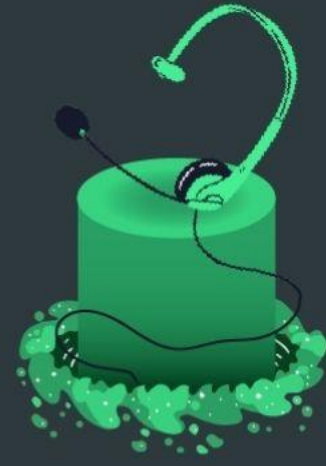
15%

RETAIL &  
WHOLESALE



10%

CONSTRUCTION



9%

BUSINESS  
SUPPORT



8%

EDUCATION

EMPLOYMENT SECTORS | PRESTON, CHORLEY AND SOUTH RIBBLE

# OTHER JOB TYPES THAT WILL BE AVAILABLE IN 2036



**LOW CARBON**



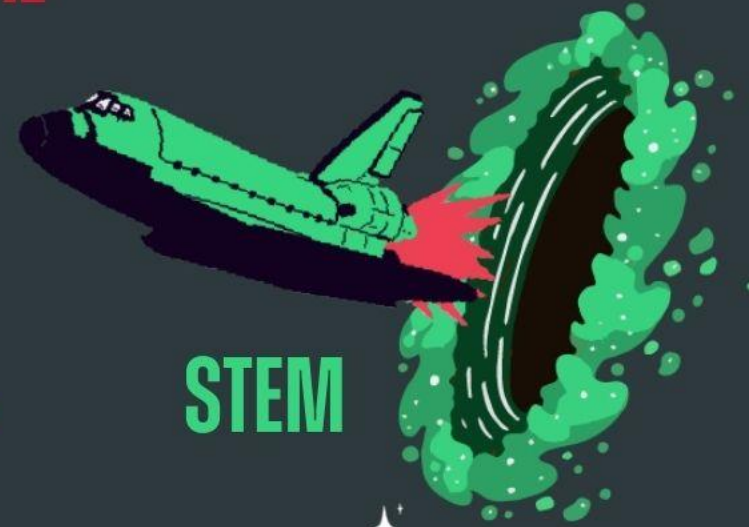
**DIGITAL**



**TRANSPORT**



**FINANCE & LEGAL**



**STEM**



# JOB LANDSCAPE IN LANCASHIRE



70%

The infographic features a large dark blue circle with a white border containing the text '70%'. The circle is surrounded by a splash of lighter blue and white. Various icons are scattered around: a green clothes hanger, a purple 'FOR SALE' sign, a purple truck, a yellow forklift, and a green ladder.

ARE IN EMPLOYMENT



8.1%

The infographic features a large dark blue circle with a white border containing the text '8.1%'. The circle is surrounded by a splash of green and white. Various icons are scattered around: orange scissors, a blue calculator, a blue folder, a green ladder, and several gold coins.

OF WHICH SELF EMPLOYED



# *JOB LANDSCAPE IN YOUR AREA*



72%

ARE IN EMPLOYMENT



7.5%

OF WHICH SELF EMPLOYED



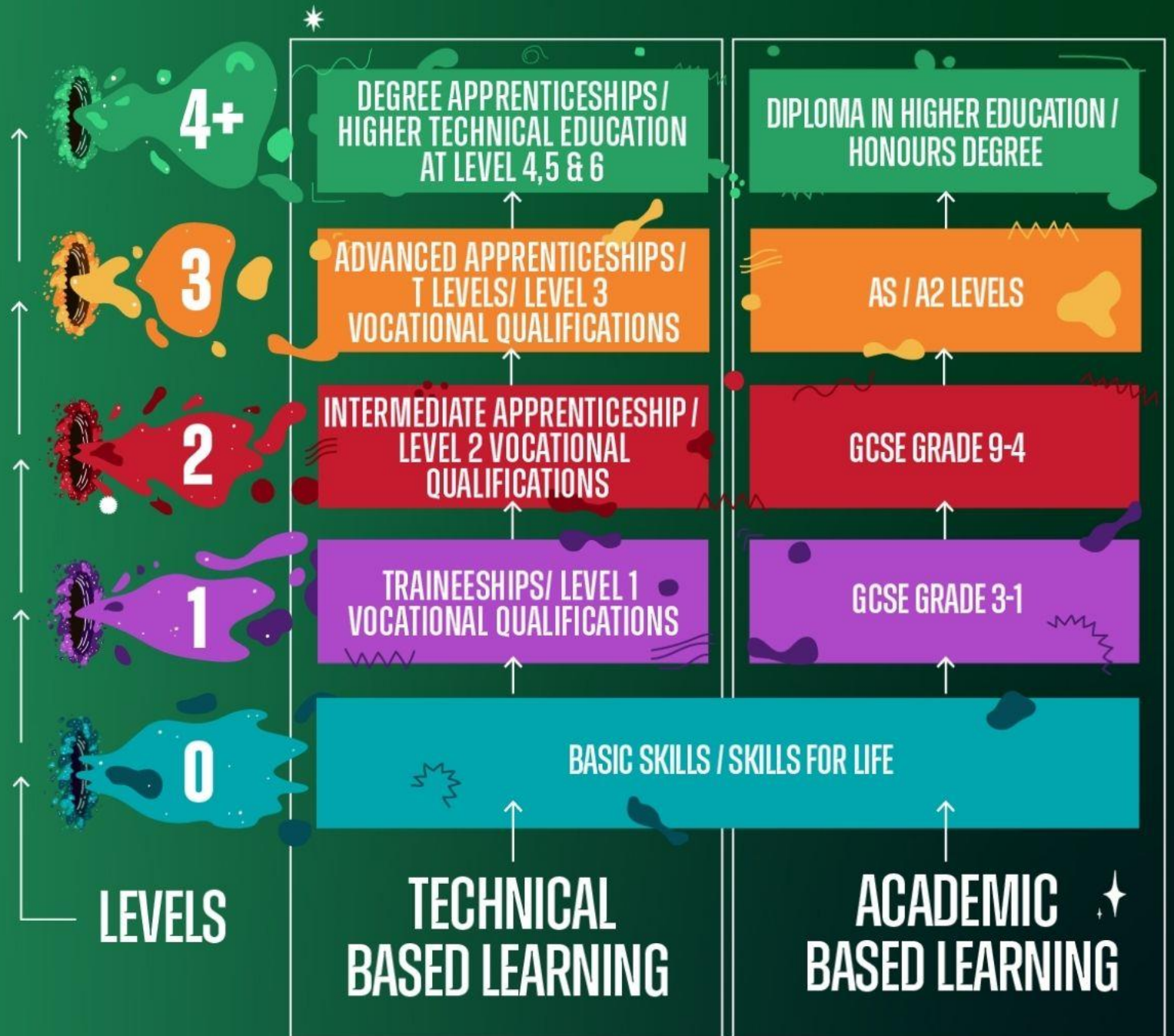
# *APPRENTICESHIPS*

APPRENTICESHIPS ARE A GREAT WAY TO EARN AND LEARN WHILST WORKING,  
AND AVAILABLE IN AN INCREDIBLY BROAD RANGE OF JOBS



# WHAT DO WE MEAN BY QUALIFICATION LEVELS?

When we talk about qualification levels, it doesn't just mean Academic Learning like GCSEs, A Levels, and Degrees. There are also equivalent qualification levels in Technical Education, like Traineeships, T-Levels and Apprenticeships.

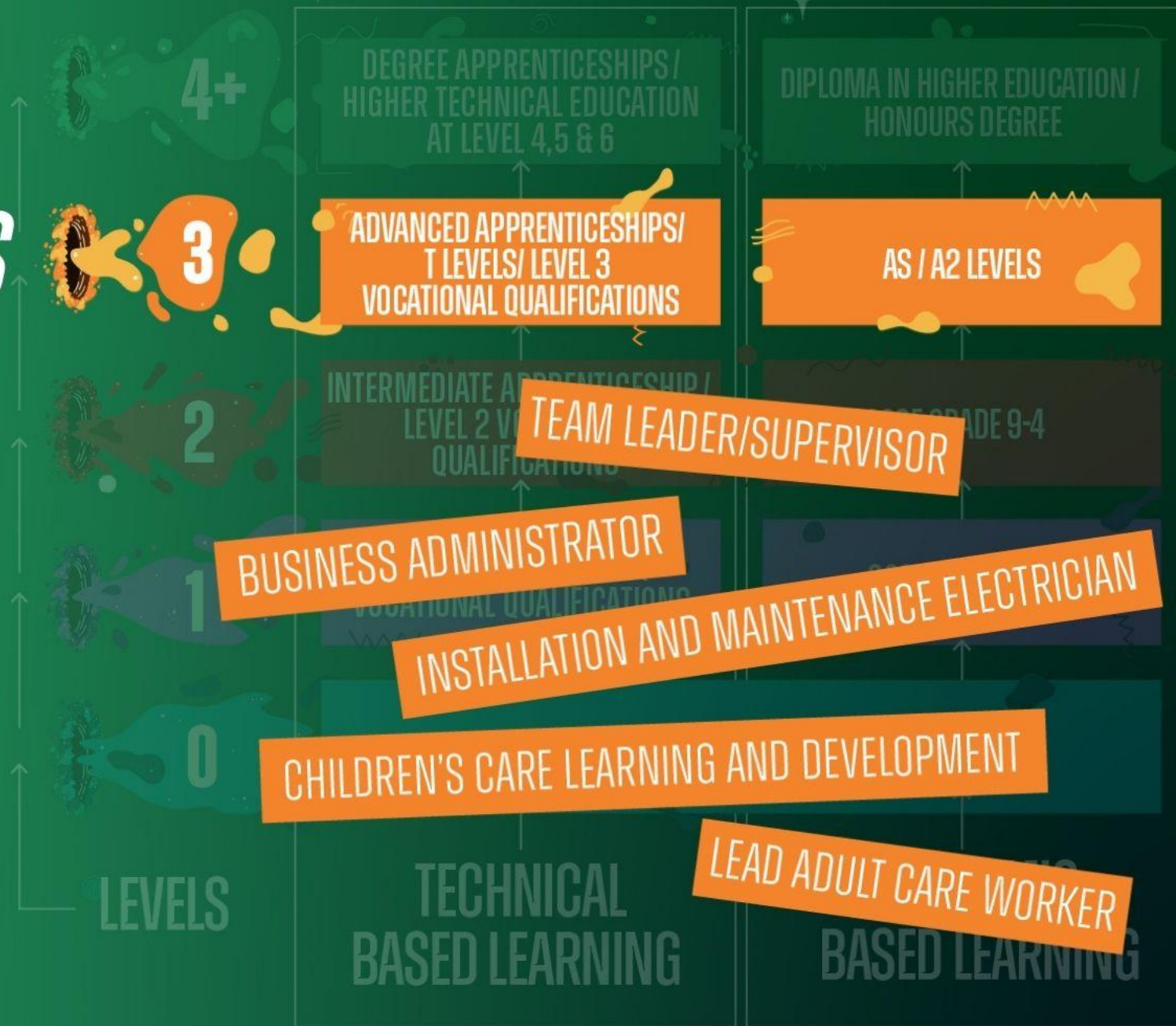




# WHAT KIND OF APPRENTICESHIPS DO PEOPLE DO AT LEVEL 2?

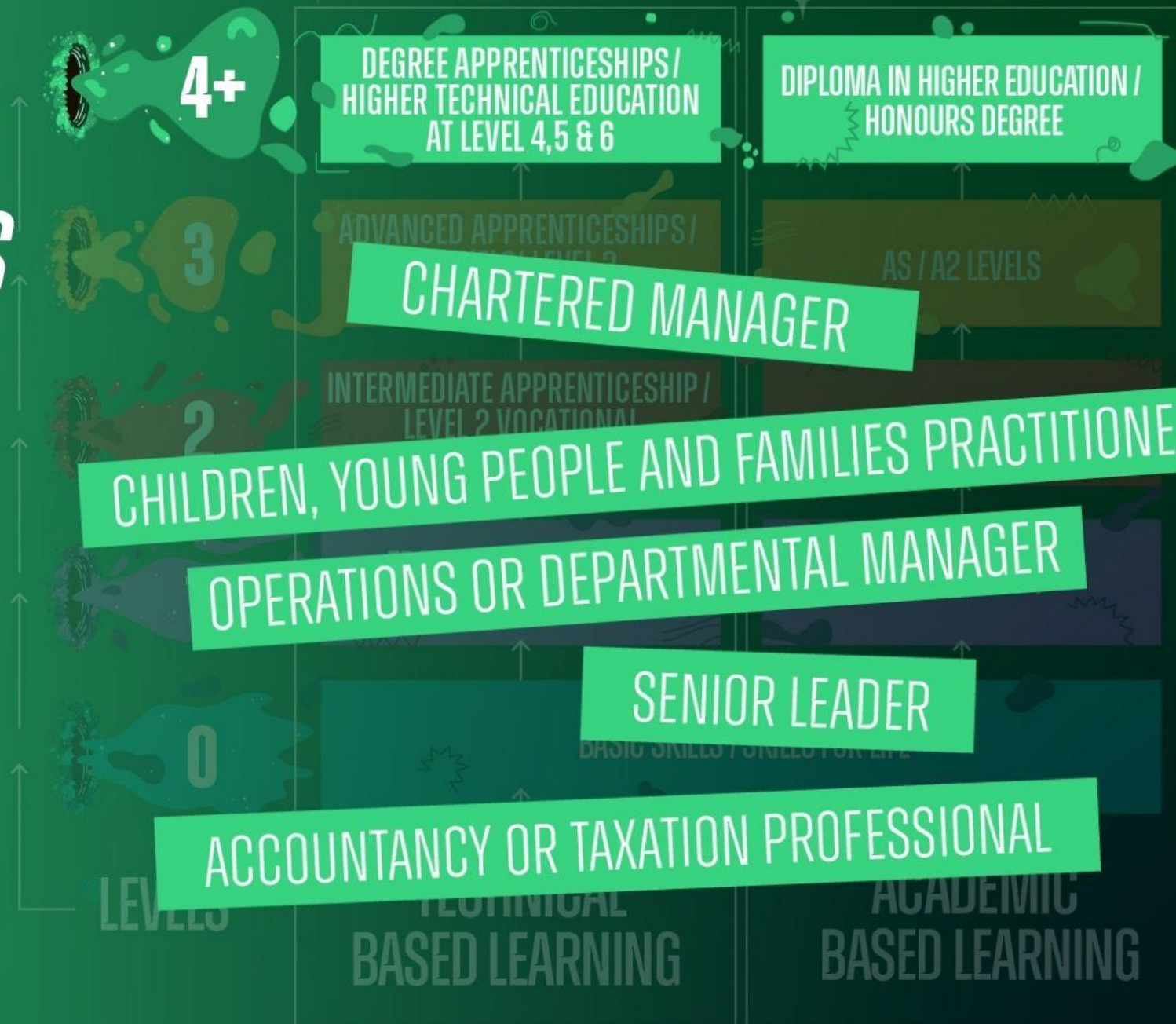


# WHAT KIND OF APPRENTICESHIPS DO PEOPLE DO AT LEVEL 3?





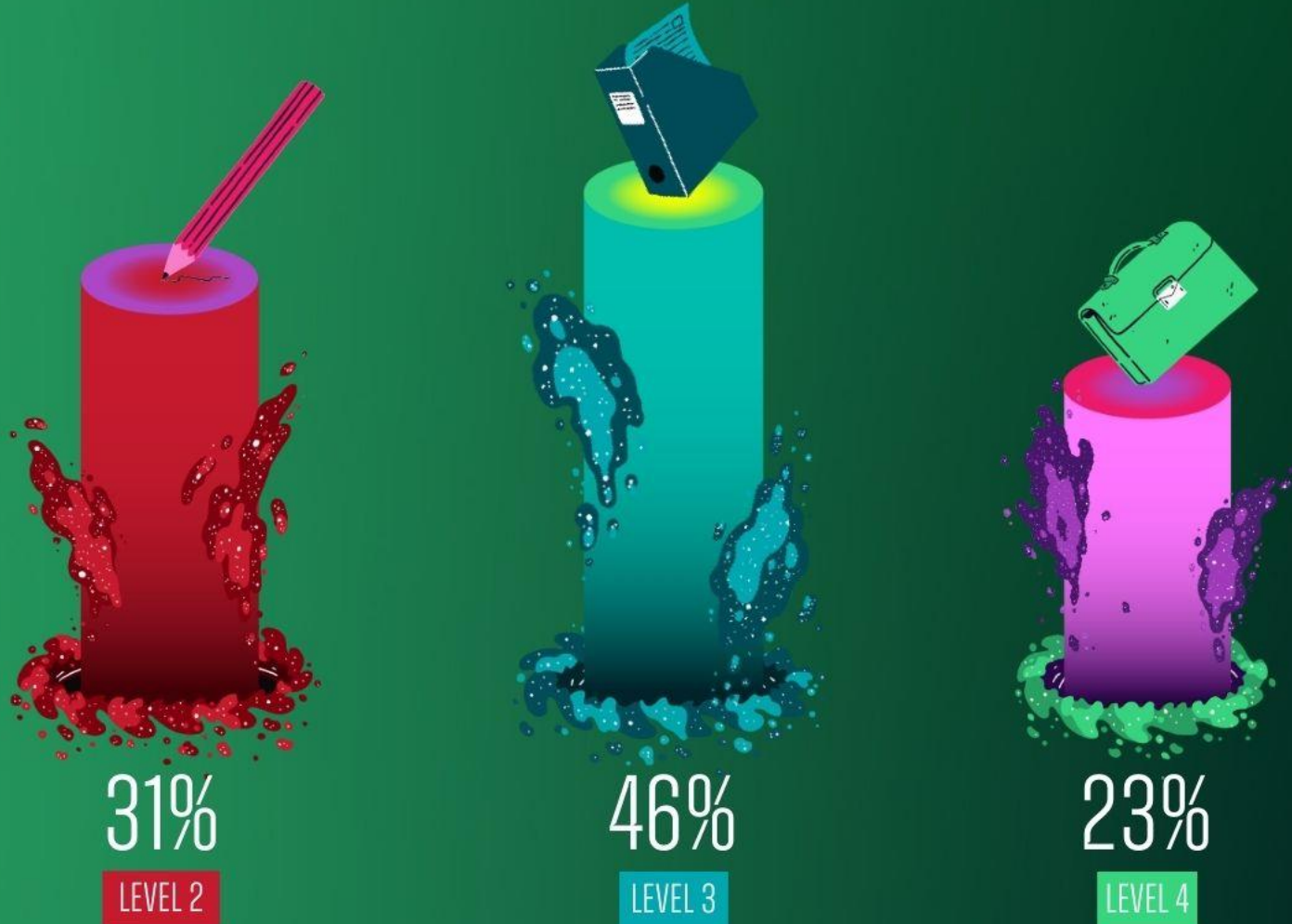
# WHAT KIND OF APPRENTICESHIPS DO PEOPLE DO AT LEVEL 4+?





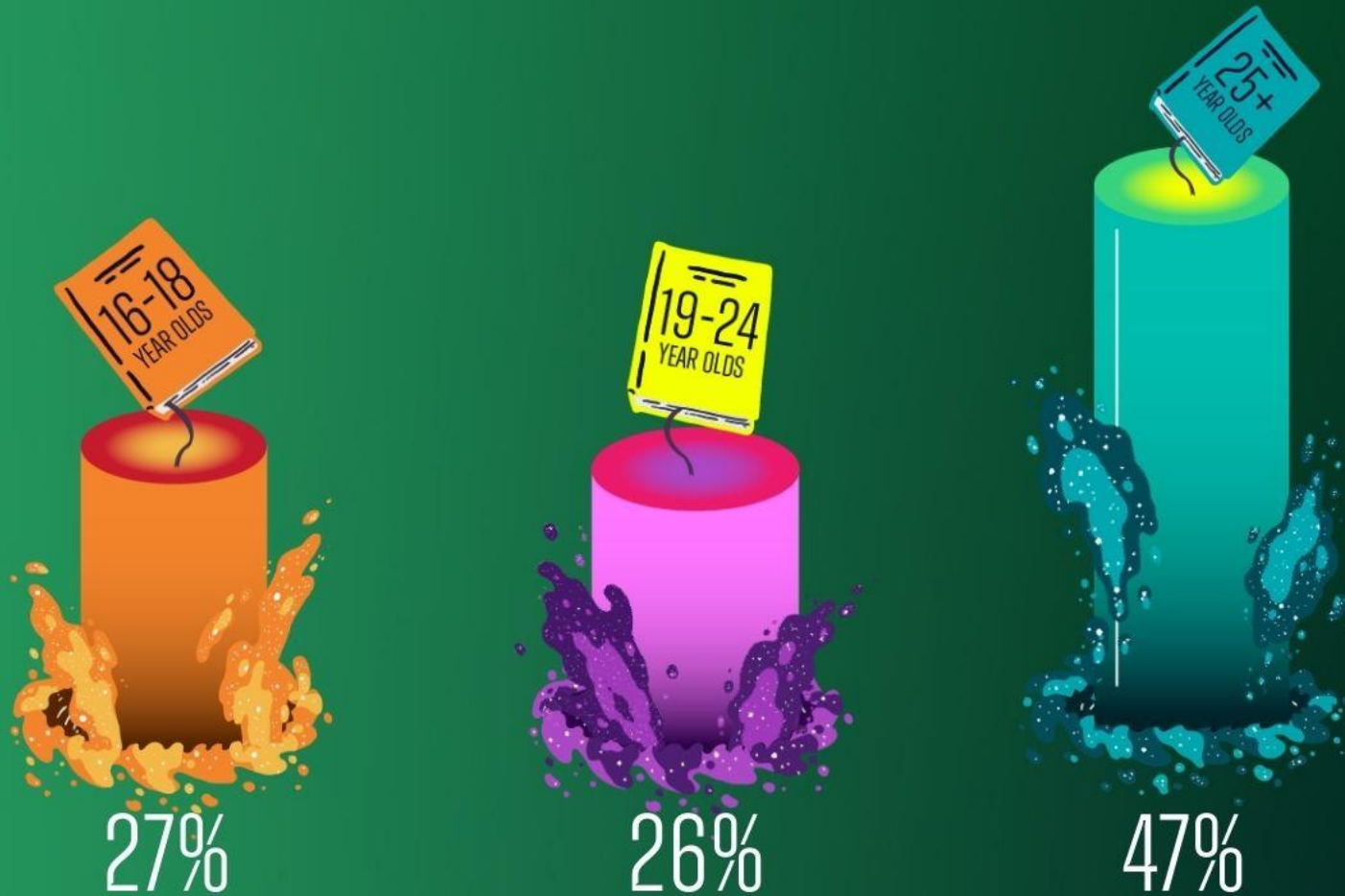
# APPRENTICESHIPS

IN THE LAST 3 YEARS, MORE THAN 33,000 PEOPLE STARTED APPRENTICESHIPS IN LANCASHIRE!



# APPRENTICESHIPS STARTS (%)

APPRENTICESHIPS AREN'T JUST FOR YOUNG PEOPLE, PEOPLE OF ALL AGES DO THEM!!





# *WHAT OTHER JOBS CAN APPRENTICES DO?*

*ENGINEERING*

*FURNITURE MANUFACTURER*

*CARPENTRY AND JOINERY*

*CHARTERED SURVEYOR*

*PROJECT MANAGER*

*HOSPITALITY*

*DIGITAL MARKETER*

*CHEF*

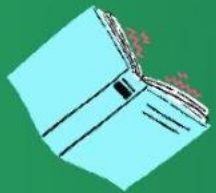
*PLUMBER*

*AEROSPACE ENGINEER*

*HEALTH AND SOCIAL CARE*

*DENTAL NURSE*

*ITS ALL ABOUT DOING THE  
RIGHT QUALIFICATIONS  
FOR THE RIGHT JOBS  
THAT ARE IN DEMAND IN THE  
AREA YOU WANT TO WORK IN...*







# WARNING!!!

It is not as simple as "get as many, and as high level qualifications as possible and you will get a job and earn more"



# EMPLOYMENT RATES BY QUALIFICATION LEVEL

NO QUALIFICATIONS



47%

BELOW LEVEL 2



70%

LEVEL 2



76%

LEVEL 3



83%

LEVEL 4+



87%

HOW LIKELY ARE YOU TO BE EMPLOYED? THAT COULD DEPEND ON YOUR QUALIFICATIONS



*THE BETTER THE QUALIFICATIONS,  
THE MORE YOU COULD  
POTENTIALLY EARN*



NO  
QUALIFICATIONS



LEVEL 2



LEVEL 3



LEVEL  
4 AND 5



LEVEL 6+

# *HOW TO USE YOUR PERSONAL SKILLS TO BECOME EMPLOYABLE*

**POSITIVE ATTITUDE**  
**ENTHUSIASM**  
**INTEREST**  
**WORK ETHIC**  
**PROBLEM SOLVING**  
**COMMUNICATION**  
**TIME MANAGEMENT**  
**ORGANISATION**

# **GREAT JOB**





# *FUTURE SKILLS & JOBS*

Looking forward over the next 10 to 15 years, we can see a shift in the level of qualifications employers are demanding

# FUTURE SKILLS & JOBS

Jobs vs qualifications in the next 10-15 years





# *FUTURE SKILLS & JOBS*

Jobs vs qualifications in the next 10-15 years



# FUTURE SKILLS & JOBS

Jobs vs qualifications in the next 10-15 years

NUMBER OF JOBS IN NEXT 10-15 YEARS

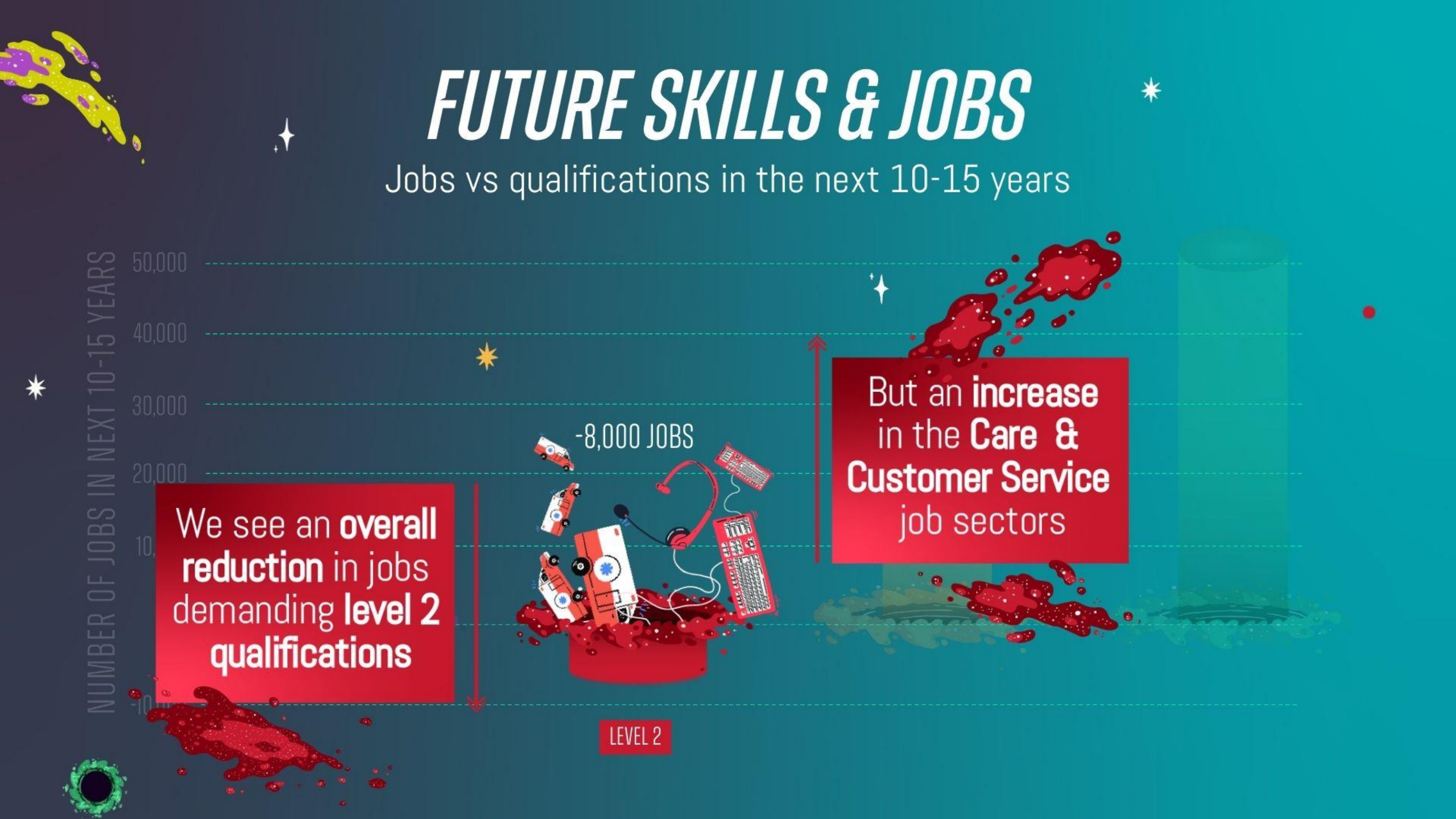
50,000  
40,000  
30,000  
20,000  
10,000  
-10,000

We see an **overall reduction** in jobs demanding **level 2 qualifications**

-8,000 JOBS

But an **increase** in the **Care & Customer Service** job sectors

LEVEL 2





# ***FUTURE SKILLS & JOBS***

Jobs vs qualifications in the next 10-15 years

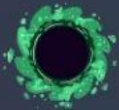
NUMBER OF JOBS IN NEXT 10-15 YEARS

50,000  
40,000  
30,000  
20,000  
10,000  
0  
-10,000

**A big increase in jobs demanding Level 3 qualifications**

+15,000 JOBS

LEVEL 3



# ***FUTURE SKILLS & JOBS***

Jobs vs qualifications in the next 10-15 years





***FUTURE***  
***EXCITING***  
***OPPORTUNITIES***

# NATIONAL CYBER FORCE

COMING TO LANCASHIRE

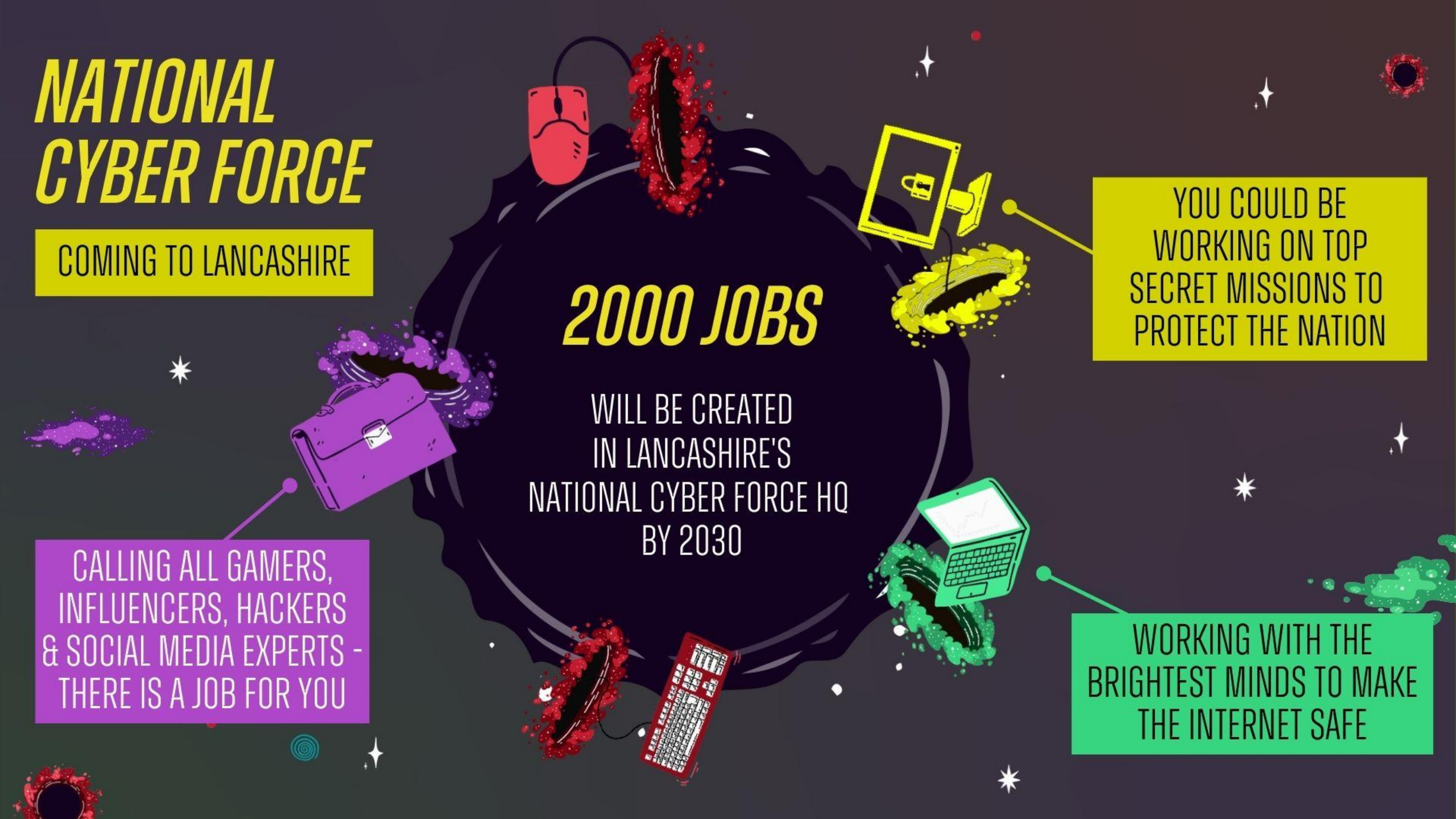
**2000 JOBS**

WILL BE CREATED  
IN LANCASHIRE'S  
NATIONAL CYBER FORCE HQ  
BY 2030

YOU COULD BE  
WORKING ON TOP  
SECRET MISSIONS TO  
PROTECT THE NATION

CALLING ALL GAMERS,  
INFLUENCERS, HACKERS  
& SOCIAL MEDIA EXPERTS -  
THERE IS A JOB FOR YOU

WORKING WITH THE  
BRIGHTEST MINDS TO MAKE  
THE INTERNET SAFE





FUTURE EXCITING OPPORTUNITIES

# EDEN PROJECT

EXPECTED TO OPEN IN 2024

TOURISM

750 JOBS

THE  
EDEN PROJECT  
IS EXPECTED TO BRING  
2000 JOBS  
TO THE AREA

SUPPLY CHAIN

950 JOBS

ECOLOGY

300 JOBS



FUTURE EXCITING OPPORTUNITIES

# LOW CARBON JOBS.

COMING TO LANCASHIRE

BY 2030,  
LANCASHIRE IS PREDICTED  
TO HAVE MORE ENERGY AND  
LOW CARBON JOBS PER HEAD  
THAN ANYWHERE ELSE  
IN THE COUNTRY



HYDROGEN  
ENERGY



ELECTRIC VEHICLE  
INFRASTRUCTURE



NUCLEAR



OFFSHORE WIND



The background is a dark purple space-themed scene. It features various celestial elements: several white stars of different sizes and shapes, a red spiral galaxy in the upper left, a purple and blue nebula in the upper right, and several cyan and red spiral patterns scattered throughout. The word "PORTAL" is centered in a large, white, italicized font. The letter 'O' is replaced by a teal, bubbly, worm-like creature.

# *PORTAL*

WORLDS OF OPPORTUNITY - ALL IN LANGASHIRE