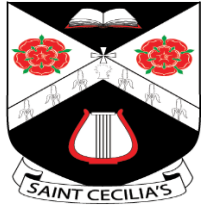


Options Information

**Key Stage 4 Curriculum
and Options
2024-26**

**Mr A Nelson
Deputy Headteacher**





9th January 2024

**Options Booklet out to
Parents/Pupils**

18th January 2024

Y9 Parents' Evening

26th January 2024

**Final date for return of pupils'
option choices to school**

Summer Term 2024

Pupils' option choices finalised

September 2024

Start of Year 10 courses

May/June 2025

Year 10 Internal Examinations

November/December 2025

**Year 11 Practice Examinations
'Mocks'**

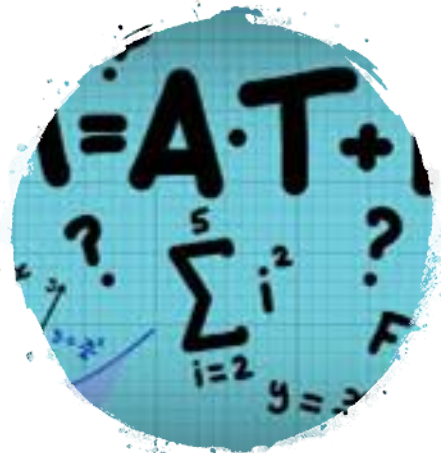
January 2026

Exam Entries Completed

May/June 2026

Final examinations





**Core subjects at GCSE at St Cecilia's -
You have to study them**

- Religious Education
- Mathematics
- English Literature
- English Language
- Science (Combined-2 GCSE's or Separate- 3 GCSE's)

Option Choices

- Geography
- History
- Spanish
- Food Preparation and Nutrition
- Design and Technology
- Computer Science
- Music
- PE GCSE
- PE Cambridge National
- Art
- Creative iMedia



Other compulsory subjects with no qualifications but lots of benefits...

- **General Physical Education**-Not a GCSE, although crucial for mental wellbeing and fitness
- **PSHE, Citizenship, RSHE, BV** not a GCSE
Citizenship is compulsory and a National Curriculum subject



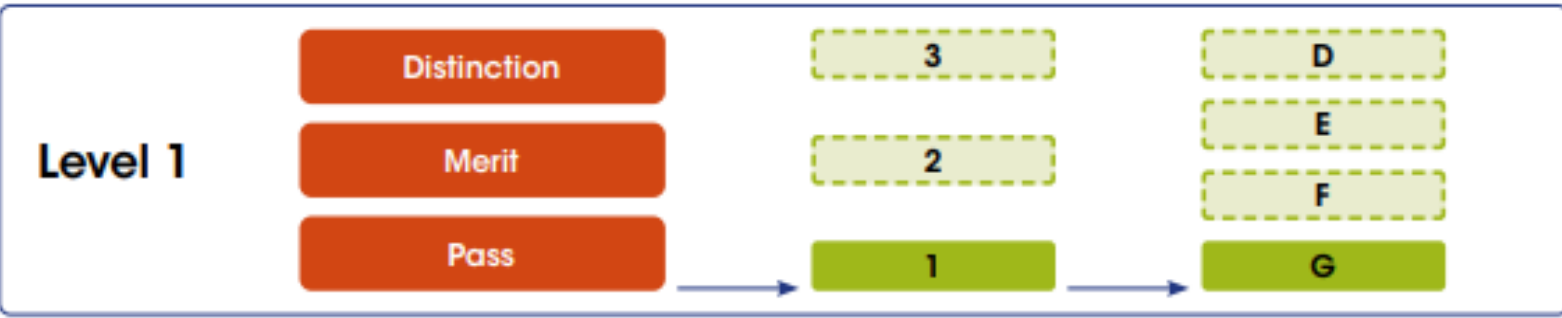


St Cecilia's

R.C. HIGH SCHOOL



Cambridge Nationals GCSE (9-1) GCSE (A*-G)



- Changes in the content of courses
- Changes in the grading systems
- 9 to 1 with 9 being the highest
- 7 = A, 4 = C
- Colleges usually ask for good passes (5's)



St Cecilia's

R.C. HIGH SCHOOL



What Runs Through Our KS4 Curriculum

- High expectations and Gospel Values
- Teaching core knowledge using pedagogy that maximises retention
- Literacy – Guided reading, tier 2 and 3 vocabulary, morphemes, ERIC sessions
- Numeracy- Numeracy in lessons, connecting to the Maths curriculum
- Strong Co-curricular programme
- Clubs/Visits
- Parents' Evenings
- Futures Evening
- Reports that inform you of current performance, predicted grades and progress
- Academic and emotional support



St Cecilia's

R.C. HIGH SCHOOL



The “English Baccalaureate” EBacc

5 Ebacc Areas:

English, Maths, Science* (compulsory)

Plus

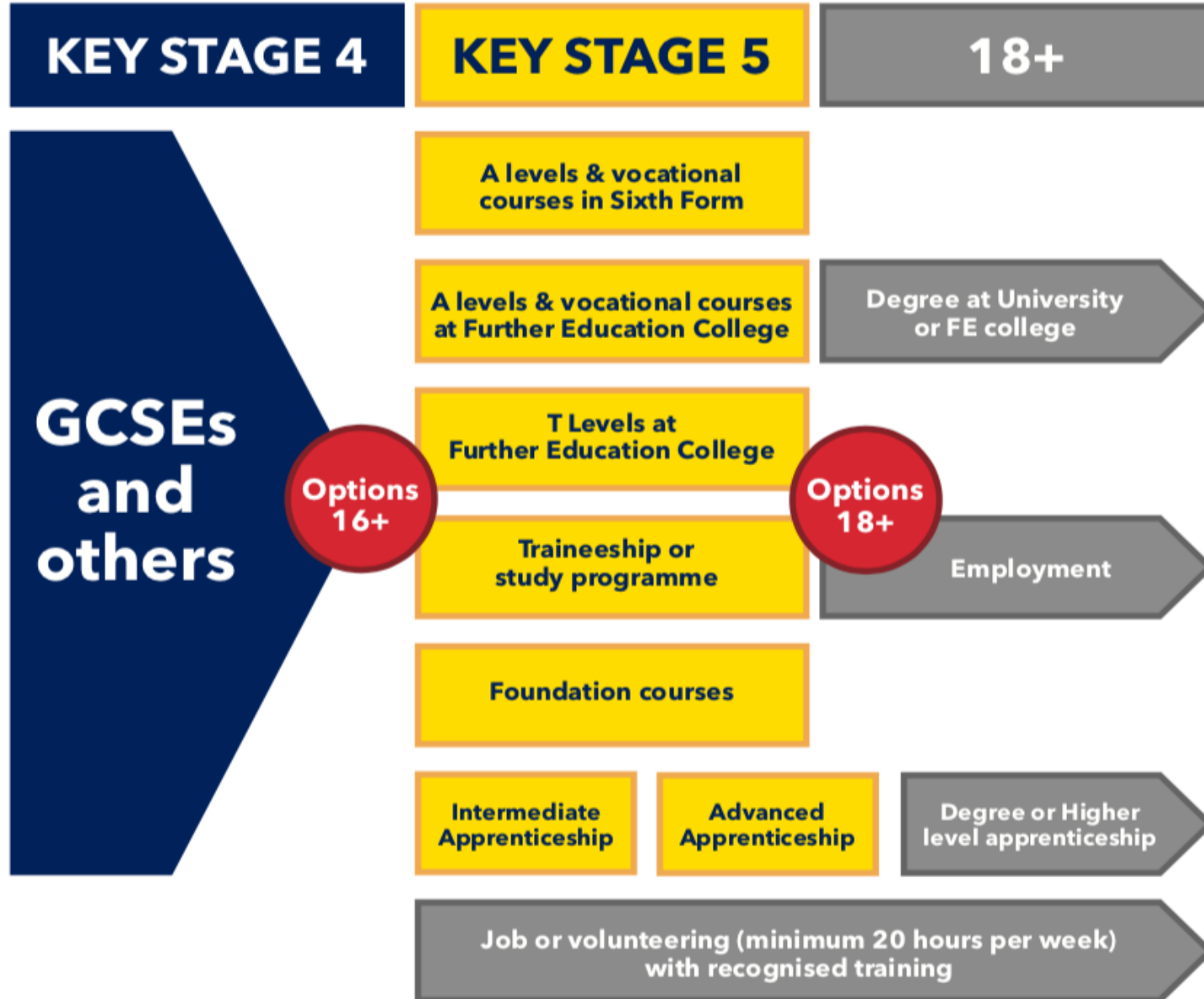
- a Language (Spanish)
- a Humanity (History or Geography)

*Computer Science also counts as a Science





St Cecilia's



Career ideas and information for your future

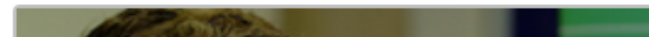
Explore

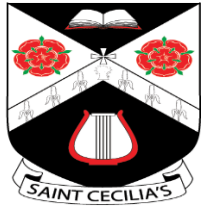
Take a closer look at selected subjects and issues, with a selection of videos, guides and advice.

[Featured](#)[Job type](#)[Subject](#)[Inspiration](#)[Advice and guides](#)[Art and design](#)[Computing](#)[Drama and theatre studies](#)[Geography](#)[History](#)[Maths](#)[Music](#)[Science](#)[Travel and tourism](#)[Business studies and economics](#)[Construction and architecture](#)[Engineering](#)[Hair and beauty studies](#)[Home economics](#)[Media](#)[Psychology](#)[Sociology](#)[Child development](#)[Design technology](#)[English](#)[Health and social care](#)[Hospitality](#)[Modern languages](#)[Religious studies](#)[Sports science and PE](#)

English

Explore 41 stories in this section.





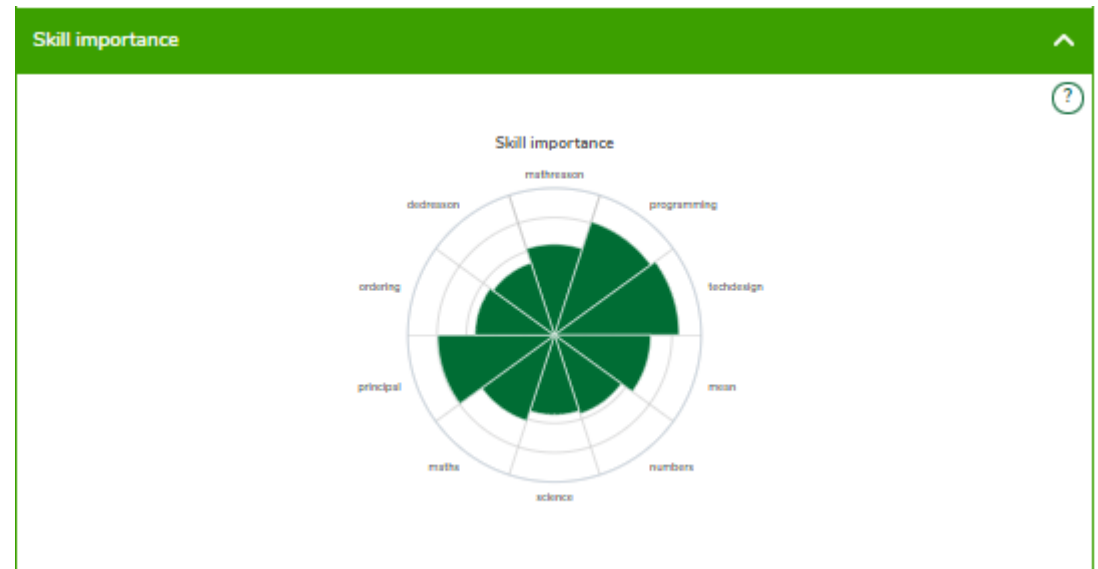
St Cecilia's

R.C. HIGH SCHOOL



Solutions Architect, Central Government
Amazon Web Services

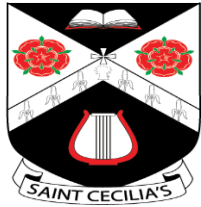
Share Print



More information about IT business analysts, architects and systems designers

Data powered by LMI For All

| | | |
|---|--|--|
| <p>£57,200 [?]</p> <p>average salary</p> <p><small>The UK average salary is £28,758</small></p> | <p>37 [?]</p> <p>average weekly hours</p> <p><small>There are 37.5 hours in the average working week</small></p> | <p>82% male [?]</p> <p>18% female</p> <p><small>The UK workforce is 47% female and 53% male</small></p> |
|---|--|--|



St Cecilia's

R.C. HIGH SCHOOL



Careers

[Home](#) > [Personal Development](#) > [Careers](#)

Personal Development

[Personal Development at St Cecilia's](#)

[PSHE & RSE](#)

[Careers](#)

[Careers at St Cecilia's](#)

[Evaluating Impact](#)

[Destinations](#)

[St Cecilia's Alumni](#)

[LMI](#)

[Wellbeing](#)



| | | |
|-----------------------------------|--------------------------------|------------------------------|
| Careers Overview | Careers Policy | Destinations |
| Evaluating Impact | Alumni | LMI |

Meeting the Gatsby Benchmarks

At St Cecilia's RC High School we are committed to providing all of our students in Years 7 to 11 with a comprehensive programme of careers education, information, advice and guidance (CEIAG) and work related learning (WRL) that is underpinned by the firm belief that every young person needs high-quality career guidance to make informed decisions about their future.

[Gatsby Benchmark One: A Stable Careers Programme](#)

[Gatsby Benchmark Two: Learning from Career and Labour Market Information](#)

[Gatsby Benchmark Three: Addressing The Needs of All Student](#)

[Gatsby Benchmark Four: Linking Curriculum Learning to Careers](#)

[Gatsby Benchmark Five: Encounters with Employers and Employees](#)

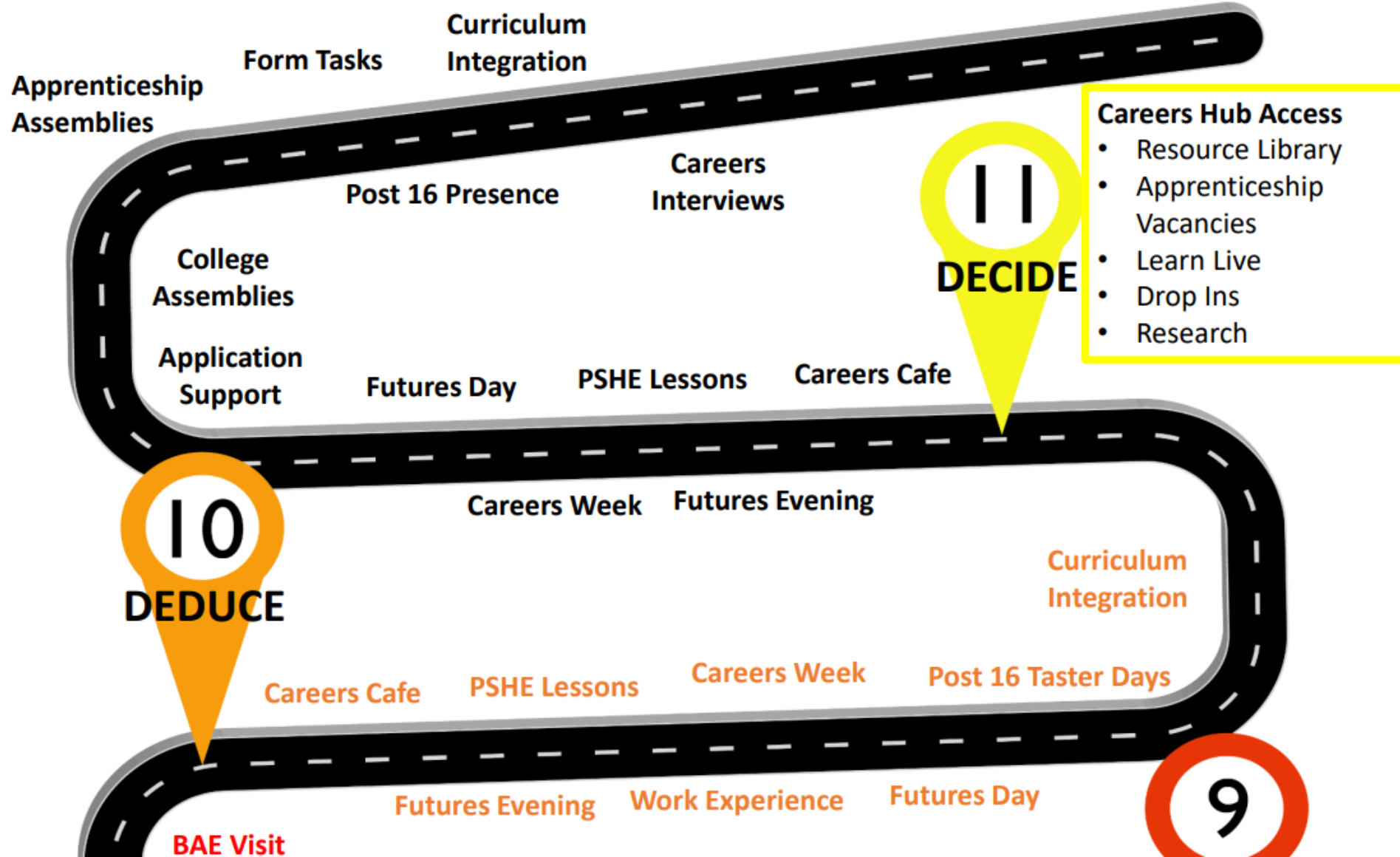
[Gatsby Benchmark Six: Experiences of Workplaces](#)

[Gatsby Benchmark Seven: Encounters with Further and Higher Education](#)

[Gatsby Benchmark Eight: Personal Guidance](#)



Careers Journey





St Cecilia's

R.C. HIGH SCHOOL



DO

- ✓ Read the options booklet carefully (ParentMail)
- ✓ Think about the subjects that you enjoy and do well at
- ✓ Find out what qualifications you need for a chosen career; visit websites, speak to colleges here tonight and, of course, talk to our staff
- ✓ Email Curriculum Leaders for more information if required
- ✓ Complete the options form to include your reserve preferences
- ✓ Hand in the options form (back of the booklet, either paper or Edulink version)

DON'T

- ✓ Choose a subject because you like the teacher
- ✓ Choose a subject because your friends are doing it
- ✓ Fail to meet the deadline of **Friday 26th January 2024**

INVEST
IN YOUR
FUTURE

YOUR
LIFE