



St. George's School
A Church of England Academy

OPTIONS

2021 – 2024



CONTENTS

	Page
INTRODUCTION	1
Option subjects offered	5
OPTION CHOICES – OTHER SUBJECTS	
GCSE Art and Design	6
BTEC Technical Award in Business & Enterprise	7
BTEC First Award in Construction & the Built Environment	8
BTEC Technical Award in Health & Social Care	9
Cambridge National Certificate in Creative iMedia	10
BTEC Technical Award in Performing Arts	11
Cambridge National Certificate in Sports Studies	12
BTEC First Award in Travel & Tourism	13

INTRODUCTION

Dear Parent,

As a parent of a Year 8 child this is a very exciting and sometimes anxious time for you as your child begins to select their options. We are here to offer help and advice along the way. We are constantly reviewing our curriculum to ensure that it delivers the Government's expectations but also allows every child to study subjects which they love.

In Years 7 & 8 at St George's School, pupils study a curriculum which prepares them for the next stage in their curriculum journey. Year 8 is a natural point to move on to more specialised courses which will support them in their future aspirations and ambitions.

During the Spring Term, Year 8 pupils will be selecting the two courses they would like to follow from the start of Year 9. We feel that all of our pupils will enjoy a deeper learning experience within these subjects by studying these courses over three years rather than two. Our Year 8 pupils will continue to study all of their core subjects throughout Year 9. They will then have the choice of two further options they would like to study through to GCSE.

Choosing these courses is an important time. Our pupils need to take account of their career intention as well as their knowledge of which subjects they have an aptitude for when making choices.

This booklet has been produced to assist pupils and parents with the selection of these courses. It contains guidance on how to make your choices and details about the content of courses and types of assessment. Pupils and parents are advised to read the booklet together before arriving at a decision.

If you require any further advice, support or guidance please email stgenquires@cidari.co.uk

Yours sincerely

N Kay

Mr N Kay

Deputy HeadTeacher

Information for Pupils

Why have I got this booklet?

It is important to have as many pathways open to you when you leave school as possible. There are many people you can talk to in order to help you with this decision including, of course, your parents, the Connexions Advisor, subject teachers, form tutors, pastoral mentors, Heads of Year and members of the Senior Leadership Team at school.

Can I choose whichever subjects I want?

In Year 9 you will study maths, English language, English literature, science, religious education, history, geography, a modern foreign language and core PE. You will be allowed to select two further option subjects to study through to the end of Year 11. In Year 10 you must study Maths, English language, English literature, science and religious education. You will then be allowed to select two further option subjects to study through to the end of Year 11

Will I get my first choices?

It is hoped that most pupils will get their first choices of option subjects, but with a huge number of pupils all choosing different subjects, it is impossible to give everybody their top choices. You should therefore make sure that all of your choices are subjects that you definitely want to study. You need to make sure that you are certain about your decisions, so use this time to speak to as many different people as possible.

Should I choose the same subjects as my friend?

No! You need to think very carefully about the subjects that you want to study. There is no point choosing a subject you do not like, just because your friend wants to do it. The way the timetable is designed you might not be in the same group as your friend anyway! Choose the subject that suits you; that you know you will do well at, and that you enjoy.

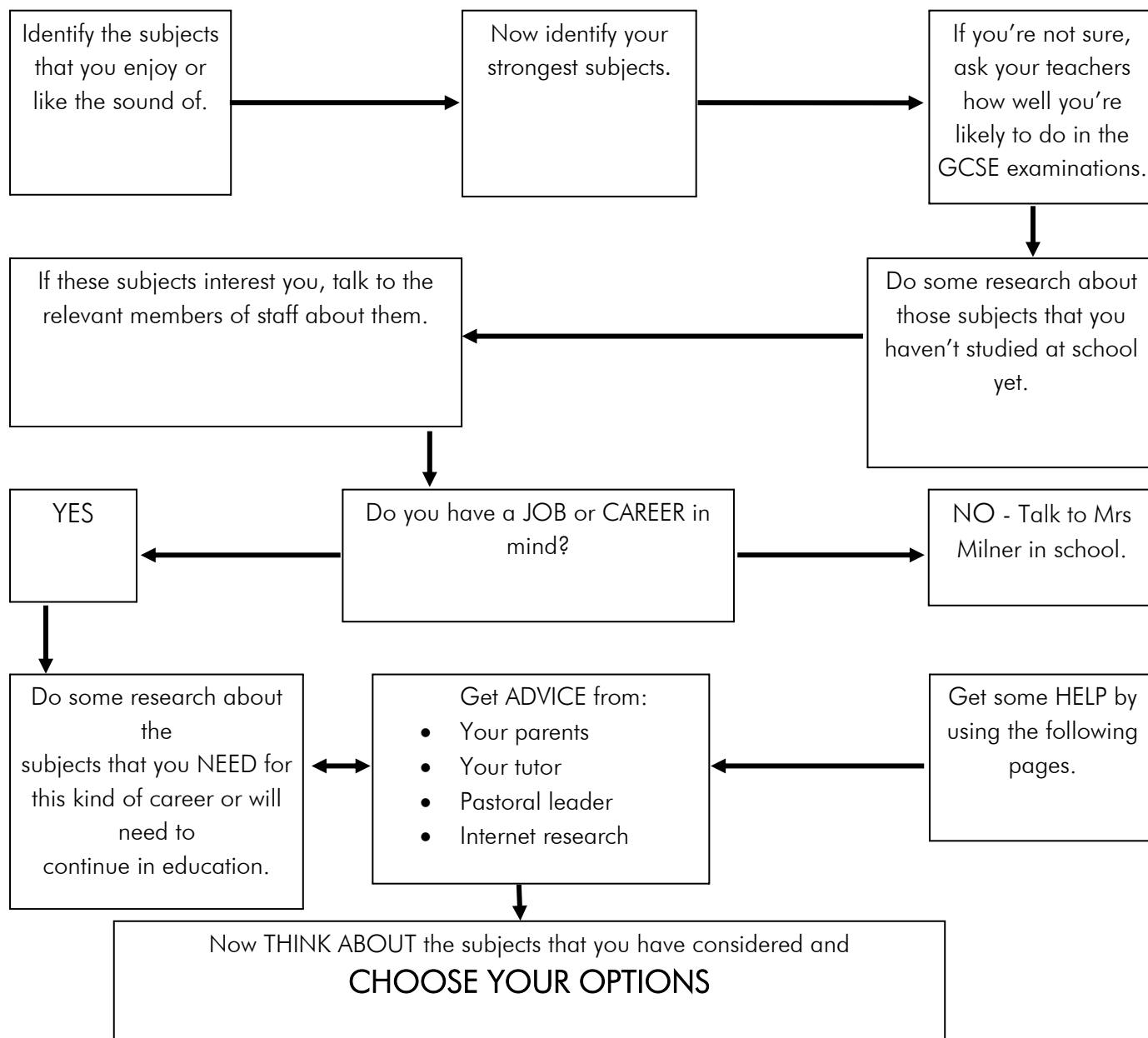
Should I choose the subject because I like my teacher?

No! That teacher may well not be teaching that group next year.

What do I have to do to succeed?

The next three years are very important, and you must aim to learn as much as you can to form the basis of your future qualifications. Careful planning and serious revision is the key to GCSE success.

FLOW CHART AID



Information for Parents

Compulsory Subjects

In Year 9 all pupils study:

Subject
English language and literature
Science
Mathematics and Statistics
History
Geography
Modern Foreign Language
Religious Education
Core Physical Education

Option subjects

All pupils will select two further subjects that they will study through Years 9, 10 & 11.

Year 9 Options Subjects

Qualification types:

There are two different types of qualifications available.

GCSE: The qualification mainly involves studying the theory of a subject, combined with some investigative work. Some subjects also involve practical work. Typically they are assessed by a combination of written exams and controlled assessments.

BTEC First or Technical Awards: These are vocational qualifications suitable for all pupils. They provide a more practical, real-world approach to learning alongside a key theoretical background. Assessment is mostly on-going throughout the course with usually only one externally assessed exam.

Information for Parents

Pupils must choose two subjects from the list below to study in Year 9 and through to the end of Year 11.

- Art & Design
- Business Studies
- Construction & the built environment
- Creative iMedia
- Health & Social Care
- Performing Arts
- Sports Studies
- Travel & Tourism

At the end of Year 9 pupils will then be able to choose two further options from the list of subjects below to study in Year 10 & 11. One of these options must be geography or history

- Geography
- History
- French
- Spanish
- Media Studies
- Computer Science

Whilst we try to run all the options, we must ensure that each one is viable and therefore must have a minimum number of pupils selecting that subject. It is possible that some options will not run.

Using this booklet

The following pages give details of all courses that can be chosen by pupils to study in Year 9. Please read the course details carefully before making any choices.

OPTION CHOICES – Other Subjects

Art and Design

What will I study?

GCSE Art begins with a chance for you to develop your drawing skills and experiment with a huge variety of different techniques. You will have the chance to try lino-printing, mono-printing, textile techniques such as Batik and appliqué, sculpture, photoshop work and painting.

You will be encouraged from the start to research and analyse the work of other artists who inspire you, and as you go through the course you can choose to look at the artists who interest you the most. You gather marks for your GCSE by drawing, taking photographs and researching the work of other artists.

What qualification will the course lead to?

GCSE Art and Design. This is a single award so you gain one GCSE pass in Art and Design.

How would it help me in future?

This course will allow you to refine your skills and express yourself in a visual way. It could be the first step towards an A level or simply a way of nurturing your creativity and independence. This could lead to a degree in a number of Art and Design courses or help you to be creative in another course you choose. The range of possible careers you could pursue is enormous; you could become an illustrator, architect, interior designer, art therapist, arts manager, graphic designer, set designer, fashion designer, costume designer, web designer, games designer, car designer etc.

How will my work be assessed?

The coursework/ portfolio of work accounts for 60% of your final GCSE grade. This will be made up of two or more projects.

Your coursework is marked using four assessment objectives. These focus on the following areas:

- Assessment Objective 1 – Artist research.
- Assessment Objective 2 – Experimenting.
- Assessment Objective 3 - Recording and developing.
- Assessment Objective 4 - Presenting.

You will have an externally set task. This accounts for 40% of your final GCSE grade. This is marked using the same assessment criteria as your coursework.

How will it be similar to what I have done in Year 8?

You will need many of the skills you have developed in Art during Year 8. You will record and develop your ideas in a sketchbook and present your understanding in a final outcome. Using new media and techniques, and exploring your own individual ideas, will be the main difference from the Year 8 course.

BTEC Level 1/2 Tech Award in Business & Enterprise

What will I study?

You will learn the knowledge, understanding and skills required to research, plan, pitch and review an enterprise idea. You will be introduced to the most important aspects of an enterprise such as market research, planning, carrying out financial transactions, communication and problem solving. As well as gaining knowledge of the features and characteristics of 'real' enterprises and different factors that can affect the performance of an enterprise.

You will learn about the following:

- Component 1 - Exploring Enterprises.
- Component 2 - Planning for and Pitching an Enterprise Activity.
- Component 3 - Promotion and Finance for Enterprise.
-

What qualification will the course lead to?

BTEC Level 2 Tech Award in Enterprise

How would it help me in the future?

The course gives you an insight into enterprise in the business world. You may wish to continue to a higher level of BTEC after completing this course and you can carry some of the units to the next level. You will develop enterprise skills which include wider key skills in communication, research, working with others, discussion and ICT that will help you in your other subject areas, further education and future employment.

Further vocational and academic qualifications

You will be able to progress further to a Level 3 BTEC National in Enterprise or A level Business, eventually moving on to a higher level qualification such as a degree in Business Studies, Finance or Marketing.

How will my work be assessed?

You will be assessed in a variety of ways including:

66.6% coursework including:

- Report writing.
- Research tasks.
- Presentations.
- Production of leaflets, booklets, newspaper articles.
- Interviews.
- Project files.
- An external examination in the finance unit (33.3%)

How will it be similar to what I have done in Year 8?

This is a new subject for you and very different to anything you have done so far. However, it will build upon some of the skills you have developed in Year 8 such as problem solving and communication. To be successful in this course you need to be able to write long essays and carry out extensive market research on a variety of different topics by yourself and in your own time.

BTEC First Award in Construction and the Built Environment

Who is this qualification for?

This course allows you to study construction and the built environment, giving you the opportunity to gain a broad knowledge and understanding of the industry. You will develop skills such as interpreting and analysing information, identifying the infrastructure required for safe and efficient work and in understanding how client needs can shape building design.

It gives you the opportunity to learn about one of the most important sectors of the UK economy.

You will study three mandatory units covering the fundamental knowledge, skills and understanding required construction technology and design:

- Construction technology.
- Construction and design.
- Scientific and mathematical application for construction.

You will build on the knowledge gained in the mandatory units by choosing one out of six further optional units. This will provide you with an opportunity to develop a wider understanding and appreciation of a specific aspect of the construction industry, depending on your interests. The areas covered are:

- Construction drawing techniques.
- Exploring carpentry and joinery principles and techniques.
- Exploring brickwork.
- Exploring painting.
- Exploring plumbing principles and techniques.
- Exploring electrical principles and techniques.

What qualification will the course lead to?

BTEC TECH Awards in Construction and the Built Environment

How will my work be assessed?

You will carry out tasks/assignments throughout the course. Your teacher will mark these, and so you will receive feedback as to how you are getting on.

For the assessment for Unit 3: Construction and Design, you will be able to draw on the knowledge, skills and understanding you have developed in the qualification as a whole.

The assessment for Unit 1: Construction Technology, is a test which is sent away to be marked.

How will it help me in the future?

This qualification enables you to develop a theoretical and practical knowledge of the built environment alongside some practical skills. It enables you to engage with the mathematical and scientific principles that underpin the construction industry, to explore the impact of design through research and the application of your own ideas in response to a design brief. It also allows you to progress to further study at level 3 of academic and/or vocational qualifications in construction and the built environment, engineering or design, and to apprenticeships.

BTEC Technical Award in Health and Social Care

What will I Study?

You will study 3 different Components of work completing coursework based tasks for 1 and 2 and an external assessment for component 3.

- Component 1 – Human lifespan and development.
- Component 2 – Health and Social Care Services and Values.
- Component 3 – Health and Wellbeing.

What qualification will the course lead to?

BTEC TECH Awards Health and Social Care

How will it help me in the future?

When you are studying Health and Social Care you will develop your knowledge and understanding of Health and Social Care in a vocational context. If you are interested in working in any health care, social care, early years or educational setting you would benefit from studying this course.

It will help you be an understanding, independent, compassionate, confident young person who is prepared to take on a caring role in society.

How will my work be assessed?

In the first year you will begin with human lifespan and development and start the coursework component for this unit, which involves 2 pieces of coursework. The following year you will complete coursework for Component 2. This is using work based scenarios and the different impacts on staff and clients using services. Component 3 is externally assessed and involves a controlled assessment piece, looking at a client and how their health can be improved.

How will it be similar to what I have done before?

Health and Social Care is a new subject to you but is something that you will know all about! Everyone changes and develops over the course of their life, have different life experiences and all use health services and this is what you will be studying. You will be introduced to new keywords and terms that you will use when doing your coursework and answering tasks in your assessment.

Cambridge National Certificate in Creative iMedia

What will I study in: Information Technology Creative iMedia?

If you like creating things on the computer, then Creative iMedia is the course you might choose.

It has 4 units, 3 of them are based on your coursework in making and changing images using Photoshop, making webpages and making games using Game Maker. One unit has a written exam, which is done in January of Year 10, this may be retaken if needed. All the 4 units account for 25% of the overall grade.

You will gain grades equivalent to GCSE grades 8 - 1 on successful completion of the course.

Units of work

R081: Pre-production skills

This is a compulsory unit, based on all aspects of planning projects from Mood boards to Gantt Charts. It will also develop their understanding of the client brief, time frames, deadlines and preparation techniques that form part of the planning and creation process. For the assessment of this unit, the pupils will be entered for an exam in January of Year 10, which may be retaken if needed in June.

R082: Creating digital graphics

This is also a compulsory unit, in which Photoshop is used to edit photographs and images to suit given situations. For the assessment of this unit, pupils will complete a 10 hour controlled assessment.

R085: Creating a multiple website

In this unit, pupils will have the opportunity to understand the basics of creating multiple websites. They will also be able to demonstrate their creativity by combining components to create a functional, intuitive and aesthetically pleasing website using Dreamweaver or Web Plus. For the assessment of this unit pupils will complete a 10 hour controlled assessment which is marked by the teaching staff and externally moderated. This moderation can take place in January or June of Year 11.

R086: Creating a digital animation (Year 11)

Through this unit, pupils will examine the basics of creating digital animations for the creative and digital media sector. They will also develop the know-how to create an animation from an existing design or brief. For the assessment of this unit, pupils will complete a 10 hour controlled assessment which is marked by the teaching staff and externally moderated. This moderation will take place in the June of Year 11.

BTEC Technical Award in Performing Arts – Dance

What will I study?

Performing Arts is a vocational course designed to provide an engaging and stimulating introduction to the world of performing arts. It has been developed to:-

- Increase pupils confidence and self-esteem.
- Employ the skills of problem solving and creativity.
- Make knowledgeable decisions about performances.
- Provide education and training for performing arts employees.
- Encourage personal development through practical participation and performance.

What qualification will the course lead to?

BTEC First Award in Performing Arts (Dance)

How will the course help me in the future?

This course gives pupils the opportunity to:

- Develop as effective and independent learners.
- Develop broad skills, knowledge and understanding of the performing arts industry.
- Develop practical, technical and communications skills and encourage appreciation of the need for continuous practice and improvement.
- Work as an individual developing your own creativity and ideas, in addition to group projects which will require you to understand and appreciate the contribution of others.

How is the course assessed?

Component one:

You will develop your understanding of the performing arts by examining practitioners' work and the processes used to create performance. This will include both practical and theory lessons.

Component two:

You will develop your performing arts skills and techniques through the reproduction of acting, dance and/or musical theatre repertoire.

Component three:

Learners will be given the opportunity to work as part of a group to create a workshop performance in response to a given brief and stimulus.

Important course advice:

All pupils will have to undertake a short audition if selecting this option and participate in one night of extracurricular per week if taking the course. Pupils are expected to be able to perform on stage and in front of a camera. Previous dance experience would allow pupils a brilliant head start on this fantastic course.

Cambridge National Certificate in Sports Studies

What will I Study?

OCR Cambridge National Sports Studies

Cambridge National - Sports Studies

Units of Study:

Contemporary Issues in Sport

This is the main theory element of the course and is assessed through a formal written exam. Key areas of study are user groups, barriers and solutions to participating in sport, sporting values, the Olympics and the role of national governing bodies.

Developing Sports Skills

This unit is mainly practical and focuses on one individual and one team sport. You will be required to improve your skill level both in practice and game situations. You will develop the skills to analyse your performance and keep a record of the activities you complete. You will also develop your knowledge of rules and tactics in both activities.

Sports Leadership

This unit develops your understanding of a range of leadership roles and the qualities required to become an effective leader in sport. You will also gain knowledge and experience in how to plan, perform and evaluate through becoming a young leader. Whilst completing this unit you will have the opportunity to participate in the Young Leaders Award which is a nationally recognised scheme and qualification.

Developing knowledge and skills in outdoor activities

You will learn about the wide range of outdoor activities available and experience the activities of orienteering, rock climbing and skiing. You will gain an understanding of the benefits of participating in outdoor activities. You will also gain knowledge of how to plan an outdoor activity successfully.

How will it help me in the future?

You could take this course to prepare for advanced level courses such as an A/AS Level in Sport and Physical Education or you may need to strengthen your grades by completing a foundation or intermediate vocational qualification.

With further training, you could go into a job related to sport and physical education such as a Physiotherapist or PE Teacher. You could also train further in one or more sports and become a specialist instructor in those areas.

How will my work be assessed?

Cambridge National Sports Studies

25% Written paper (1 hour)

75% Course work

With a mixture of practical and theory

How will it be similar to PE in Year 8?

You will take part in a range of practical activities, develop leadership skills and become an effective team player. There will also be the opportunity to participate in a range of outdoor pursuit activities.

You will be expected to bring your kit on a regular basis and participate with enthusiasm. An interest in sport would be beneficial to the learner, and involvement in sport as a participant or spectator outside of school will be an advantage. You must note that the Contemporary Issues Unit is 100% theory and you will spend at least one full term in a class room, therefore the ability to work well in classroom based activities is essential. Sport Studies requires commitment to completing course work on time and always to the best of your ability.

Even if you do not select this as an option you will still do Core PE.

BTEC First Award in Travel and Tourism

What will I study?

The Award gives learners the opportunity to develop sector-specific knowledge and skills in a practical learning environment. Learners will develop:

- Knowledge that underpins the effective use of skills, processes and attitudes in the sector such as the appeal of different tourist destinations to different types of customer, and the factors that influence travel and tourism.
- Skills such as researching different travel and tourism organisations, the features of tourist destinations, and the products and services available to meet the needs of different customers.
- Attitudes that are considered to be very important in the travel and tourism sector, including how to develop tourism while respecting the environment and local communities.

What qualification will the course lead to?

BTEC Level 2 Technical Award in Travel and Tourism.

How will the course help me in the future?

You will develop study and life skills that will prepare you for more advanced study or employment in the travel and tourism industry. Many of our pupils continue their studies on the Level 3 Diploma in travel and tourism or hotel, restaurant and event management courses, and can then continue onto degree courses in higher education. Alternatively, there are a wide variety of job opportunities and you could find yourself working for airlines and airports, tour operators, travel agents, visitor attractions, visitor centres or the logistics of the Travel and Tourism industry.

What skills will I develop?

The course gives you an insight into the business of travel and tourism and gives you the opportunity to explore this subject area whilst allowing you the opportunity to select other options. You will develop travel and tourism skills which include wider key skills in communication, research, working with others, discussion and ICT that will help you in your other subject areas, further education and future employment.

How is the course assessed?

All units are assessed through coursework. You will be assessed in a variety of ways including:

- Report writing
- Research tasks
- Presentations
- Production of leaflets
- Interviews
- Project files
- Externally assessed exam

How will it be similar to what I have done in Year 8?

This is a new subject for you and very different to anything you have done so far. However it will build upon some of the skills you have developed in Year 8 such as team working, problem solving and communication.