

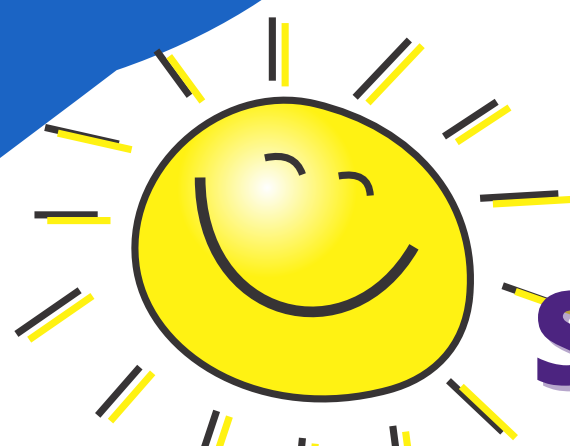
Do you have concerns about a young persons, emotional health & Wellbeing ?

Would you like further information on local services & support available?

Unsure where go get support for a referral?

Keen to gain support for young person ?

Are you struggling with overwhelming thoughts & feelings ?



Summer Drop in Times

Blackpool Primary Care Mental Health workers offer an ongoing weekly Monday drop ins, for support and guidance. Open to young people, parent carers & professionals.

We can discuss current concerns, safety / risk factors and devise a plan to support the young person. We look closely how best to support the young person by signposting the most appropriate services.

We can also assist with effective referrals into OPTIONS4CYP.



BLACKPOOL PMHW



VENUE

Dates

Monday 15.8.22 : Telephone Calls

Westminster Primary Academy

Monday 25.7.22 : Face to face

Monday 22.8.22 : Telephone Calls

Childrens Centre
Westminster Road

Monday 1.8.22 : Face to face

Monday 29.8.22 : Closed Bank Holiday

Blackpool
FY1 2QE

Monday 8.8.22 : Face to face

Monday 5.9.22 : Open as usual

For Further Information Contact:

Time

0800 121 7762

2-4.30pm



