



# Calendar Problems

Here are the months January, February and March shown on a calendar:

January						
Mo	Tu	We	Th	Fr	Sa	Su
28	29	30	31	1	2	3
4	5	6	7	8	9	10
11	12	13	14	15	16	17
18	19	20	21	22	23	24
25	26	27	28	29	30	31
1	2	3	4	5	6	7

February						
Mo	Tu	We	Th	Fr	Sa	Su
1	2	3	4	5	6	7
8	9	10	11	12	13	14
15	16	17	18	19	20	21
22	23	24	25	26	27	28
29	1	2	3	4	5	6
7	8	9	10	11	12	13

March						
Mo	Tu	We	Th	Fr	Sa	Su
29	1	2	3	4	5	6
7	8	9	10	11	12	13
14	15	16	17	18	19	20
21	22	23	24	25	26	27
28	29	30	31	1	2	3
4	5	6	7	8	9	10

Answer these questions about the calendar.

1) Is this year a leap year? How do you know?

---

2) How many days are there in this year? Explain your answer.

---

3) How many Thursdays are there in March?

---

4) What day is 24th February?

---

5) What date is the second Friday in March?

---

6) What day is February 24th?

---



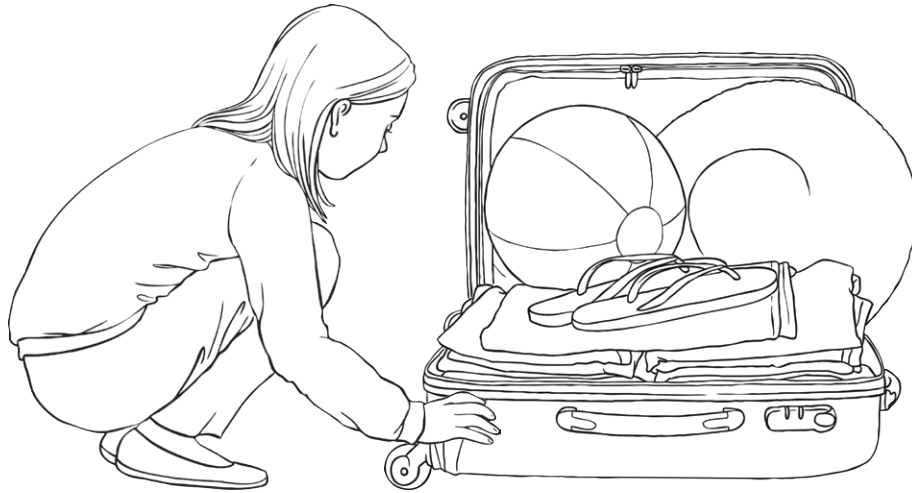


7) Today is 26th January. My birthday is 19th February.  
How many days do I have to wait?

\_\_\_\_\_

8) I am going on holiday on 29th March. Today is 26th February. How many days do I have to pack my suitcase?

\_\_\_\_\_





# Calendar Problems **Answers**

Question	Answer
1. Is this year a leap year? How do you know?	<i>It is a leap year because there are 29 days in February.</i>
2. How many days are there in this year? Explain your answer.	<i>366 days because February has 29 days making it a leap year.</i>
3. How many Thursdays are there in March?	<i>5 days</i>
4. What day is 24th February?	<i>Wednesday</i>
5. What date is the second Friday in March?	<i>11th March</i>
6. What day is February 24th?	<i>Wednesday</i>
7. Today is 26th January. My birthday is 19th February. How many days do I have to wait?	<i>24 days</i>
8. I am going on holiday on 29th March. Today is 26th February. How many days do I have to pack my suitcase?	<i>32 days</i>