

Minibeasts

Take a walk in the local area and identify possible animal habitats. As well as obvious habitats like fields, flowerbeds or hedges, notice things like drainpipes or upturned flowerpots, where numerous insects may be living.

Set up some bug traps:

- Pitfall/tumble trap
- Spread a white sheet out underneath a tree and then shake the branches firmly to see what falls out.

Search under rocks, bark and leaf matter.

Observe the minibeasts up close. Use paper and pencils to make detailed observational drawings. Simple identification keys will enable you to identify the different minibeasts. Digital cameras could be used to take photographs or short videos.

Ensure you take care when handling the minibeasts, and make sure that rocks, pots and leaves are returned to their original positions, so that the animals' habitats are not disturbed unnecessarily.

After observing the minibeasts, return them to the place they were found.

Tubs with small holes can be used to temporarily store any captured invertebrates. The minibeasts can then be taken back home and studied in greater detail.



Ladybird



Fly



Bee



Wasp



Worm



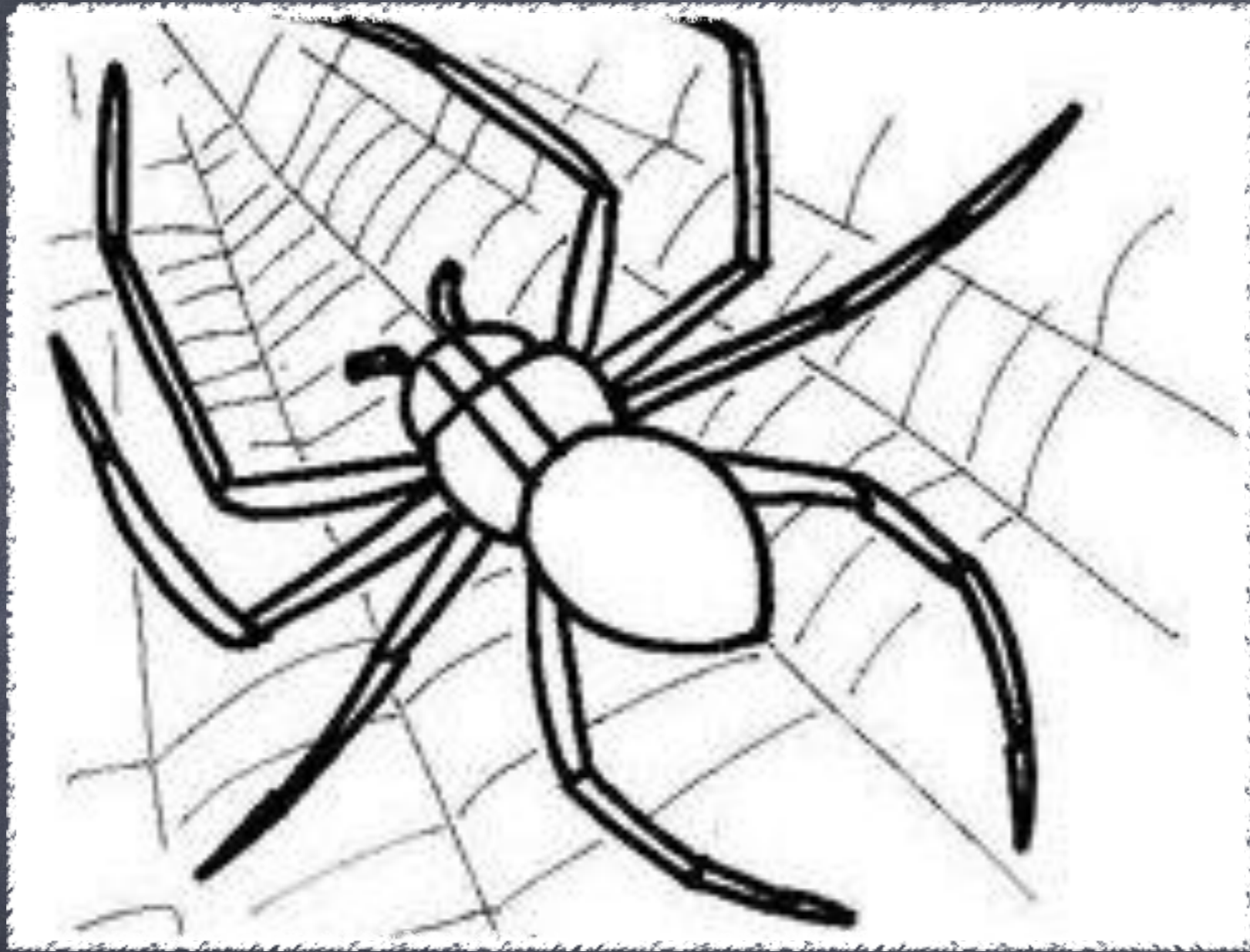
Snail



Slug



Caterpillar



Spider



Butterfly



Frog



Toad



Newt

Where can we find minibeasts?

- Under logs



Where can we find minibeasts?

- On flowers



Where can we find minibeasts?

- In water



Where can we find minibeasts?

- Under stones

Use the identification sheet
to help you.



How can we look after our minibeasts?

- Make them somewhere to live
- Take care not to hurt them when we look at them
- Put them back where we got them from



