



Ancient Greece



L.O. To understand the geography of ancient Greece.



Where is modern-day Greece?



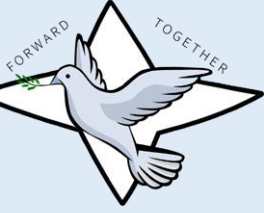
Greece is a
peninsula.
It is made up
of many
islands



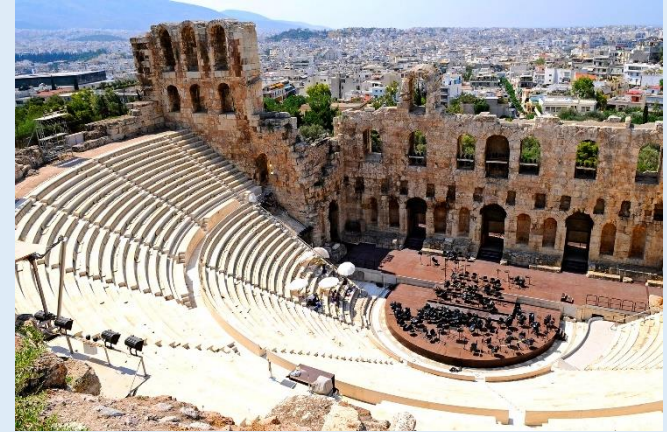


How does this compare to Ancient Greece?



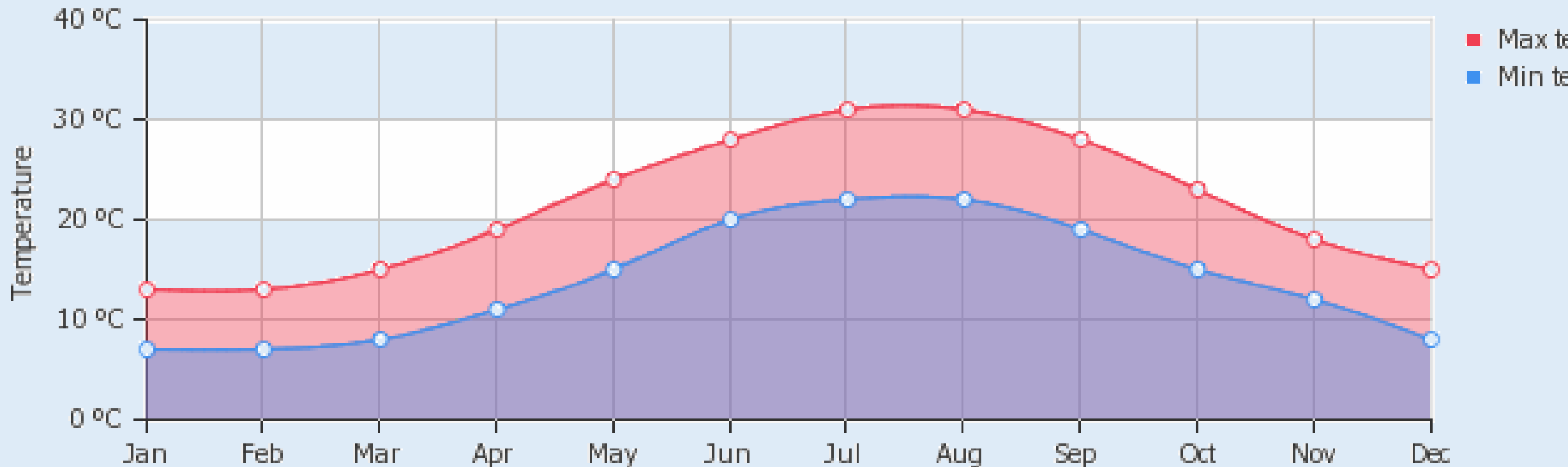


Greece is a popular holiday destination





Greece is very hot in summer. It is cooler in winter, but never very cold.





The mainland has rugged mountains, dense forests and beautiful lakes – but the country is best known for the thousands of islands dotting the blue **Aegean Sea** to the east, the **Mediterranean Sea** to the south and the **Ionian Sea** to the west.



Mount Olympus is Greece's highest mountain, standing a huge 2,917m above sea level. The Ancient Greeks believed this magnificent mountain was where the gods lived!



Olives

- Greeks live long lives and it is thought that their varied diet of olives, olive oil, lamb, fish, squid, chickpeas and lots of fruits and vegetables keep them healthy.
- Olive trees have been cultivated in Greece for over 6,000 years, and every village has its own olive groves. Today the country is one of the world's biggest producers of olives and olive oil.





SAINT
GREGORY'S

FORWARD

TOGETHER

Mount Olympus

Aegean Sea

Delphi

Athens

Corinth

Olympia

Sparta

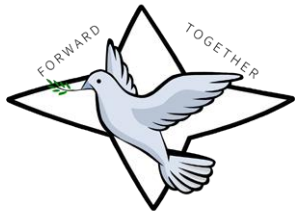
Knossos

CRETE



- 1) Colour Greece in blue
- 2) Colour the UK in red
- 3) Label the Mediterranean Sea, the Ionian Sea and the Aegean Sea.
- 4) Label the name of the continent in capitals

SAINT
GREGORY'S



ANCIENT GREECE

Task 1

1) On your blank map, label the following seas:

Ionian Sea, Aegean Sea, Mediterranean Sea

2) Label Mount Olympus, with a small Δ

3) Colour the lands that make up Ancient Greece purple.

4) Label Athens, Sparta, Crete and Troy.

Aegean Sea

Mediterranean Sea

Ionian Sea

Athens

Knossos

Corinth

Sparta

Olympia

Delphi Argos

Troy

Crete Rhodes

Mt Olympus







Task 2!

What can you say about the climate of ancient Greece?

e.g. The climate of Greece is very hot and dry in summer, and mild and wetter in the winter. Olives have been growing in Greece for thousands of years, and form part of the diet of this group of people.





Task 3!

What can you say about the geography of ancient Greece?

e.g. Greece is a peninsula and consists of many islands. It is dry and mountainous. The tallest mountain is Mount Olympus, which stands just under 3000m above sea level.

