



**Light  
Fact Cards**

twinkl.co.uk



**Light  
Fact Cards**

twinkl.co.uk



**Light  
Fact Cards**

twinkl.co.uk



**Light  
Fact Cards**

twinkl.co.uk

Light travels extremely fast. It can travel at a speed of up to

**186,000**  
miles per second!

twinkl.co.uk

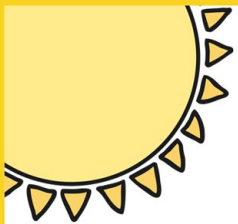
Light reflected from the moon takes

**1.3 seconds**

to get to the Earth.



twinkl.co.uk

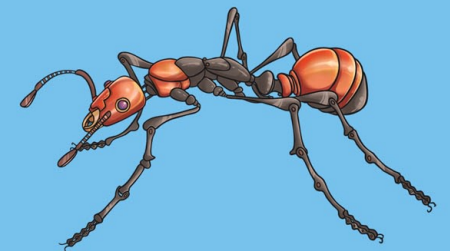


Plants use **energy** from **sunlight** to make their food.



twinkl.co.uk

Some animals can see light that humans can't. For example, some insects can see UV light.



twinkl.co.uk

Living things can emit light.

This is called  
**bioluminescence.**

Fireflies and anglerfish are two  
examples of bioluminescent.

twinkl.co.uk

Some animals are  
nocturnal and are  
awake at night.  
These animals can  
usually see very well  
in the dark.

Two examples are  
owls and  
galagos, also known  
as bush babies.



twinkl.co.uk

About **25km**  
above the earth is a layer of  
gas called the **ozone layer.**

This gas stops too many of  
the sun's UV light rays getting  
to earth, helping to prevent  
people from being damaged  
by the UV light.

twinkl.co.uk

Sunlight can reach down so  
a depth of about **80m** in  
the ocean.

After this, only about **5%**  
of the Sun's light is visible.

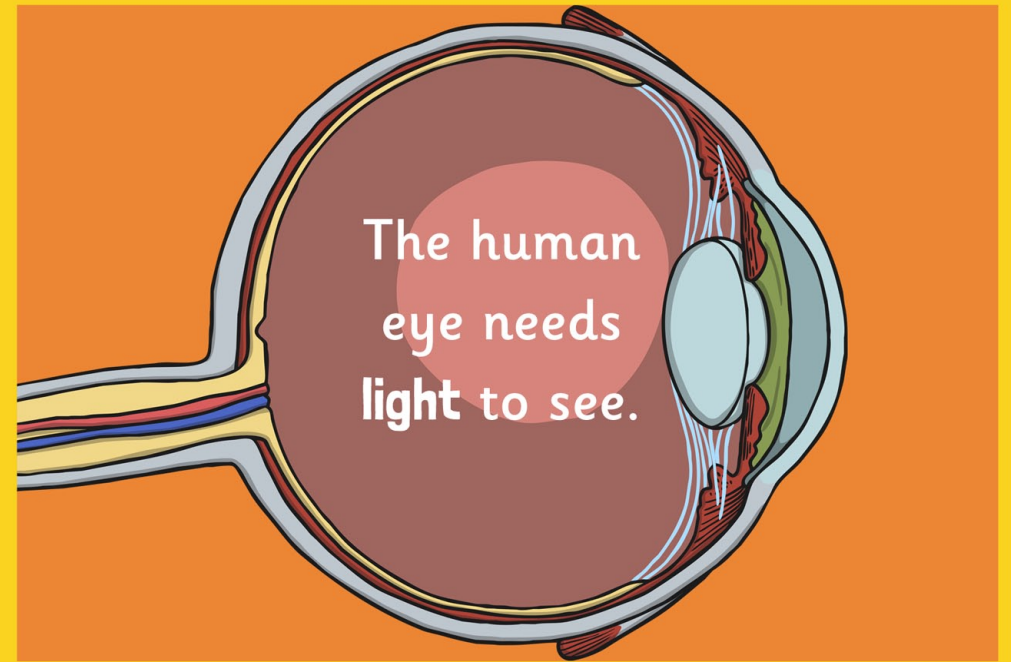
twinkl.co.uk

Forensic scientists use

**UV light**

to show up things the human  
eye can't see.

twinkl.co.uk



The human  
eye needs  
light to see.

twinkl.co.uk



It takes just  
over **8 minutes**  
for light from  
the sun to reach  
the earth.

twinkl.co.uk

A solar panel can turn  
light from the sun into

*electricity!*

twinkl.co.uk