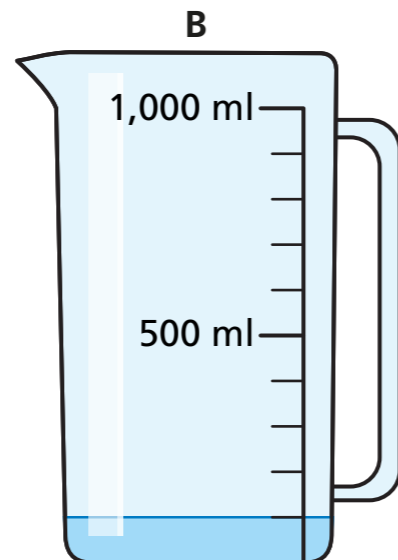
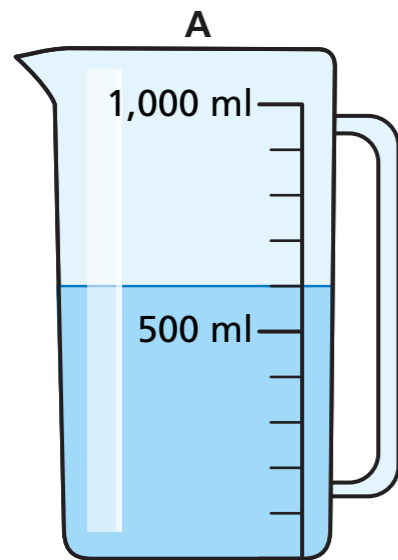


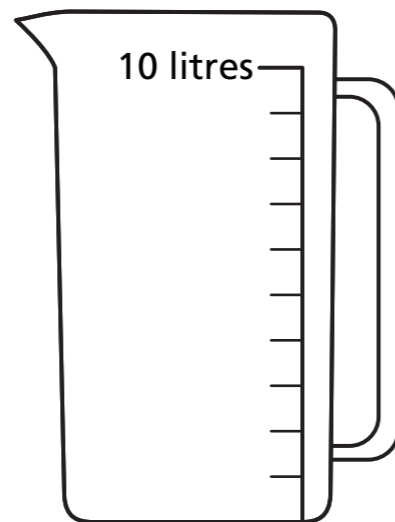
Add and subtract capacity

1 Brett has some jugs of water.



- a) How much water is in jug A? ml
- b) How much water is in jug B? ml
- c) Brett pours the water from jugs A and B into jug C.
What is the total amount of water in jug C? ml

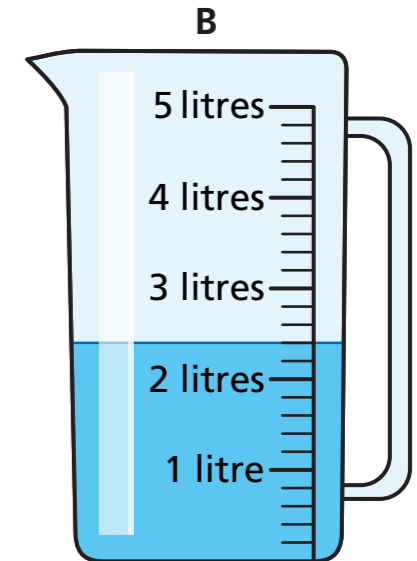
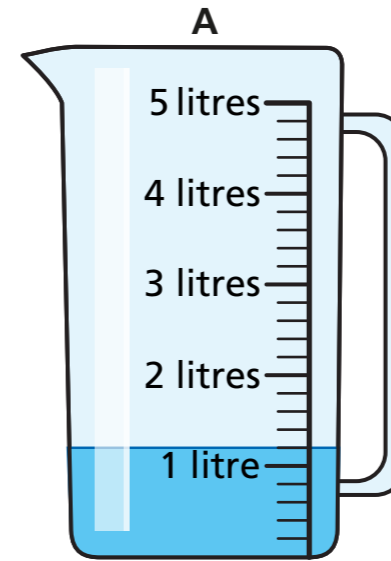
2 Kim has some bottles of juice.



- a) How much juice does she have altogether? l
- b) She pours all the juice into a jug.
Draw a line on the jug to show how much juice there is.

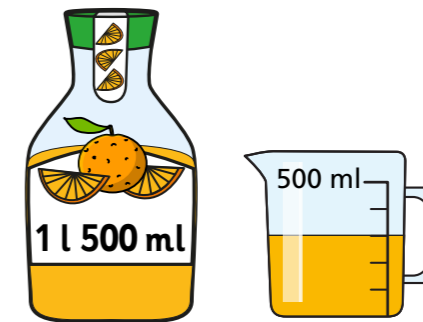


3 Mo has two jugs of water.



How much water does Mo have in total?
Mo has litres and ml

4 Dani has 1 litre 500 ml of juice in a bottle.
She pours some of the juice into a jug.

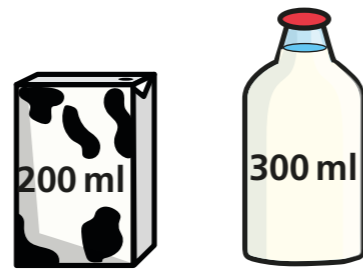


How much juice is in the **bottle** now? l ml

5 A fish tank has 3 litres 700 ml of water in it.
The capacity of the fish tank is 4 litres 900 ml.
How much more water can fit in the fish tank?

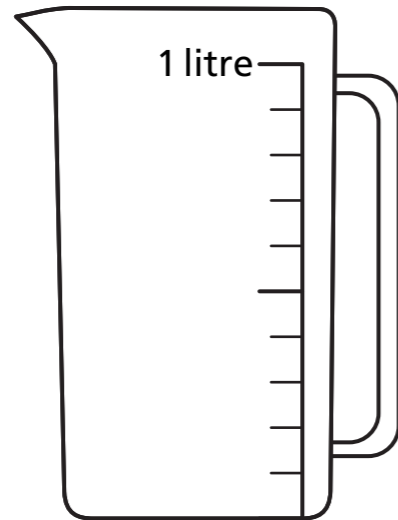
l ml

- 6 A carton holds 200 ml of milk.
A bottle holds 300 ml of milk.



- a) Three milk cartons are emptied into a jug.

Draw a line on the jug to show how much milk there is.



- b) How many bottles can be filled by the milk in the jug?

bottles

- 7 Complete the number sentences.

a) $1 \text{ l } 400 \text{ ml} + 3 \text{ l } 150 \text{ ml} = \text{ l } \text{ ml}$

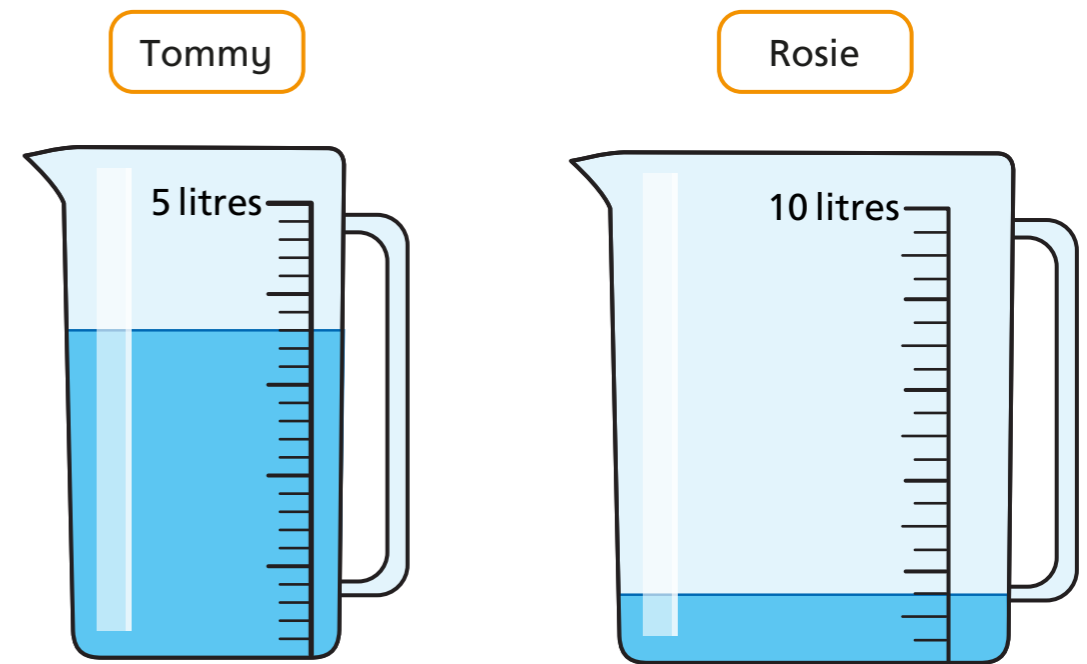
b) $7 \text{ l } 950 \text{ ml} + 2 \text{ l } 12 \text{ ml} = \text{ l } \text{ ml}$

c) $25 \text{ l } 350 \text{ ml} - 11 \text{ l } 220 \text{ ml} = \text{ l } \text{ ml}$

d) $50 \text{ l } 729 \text{ ml} - 28 \text{ l } 728 \text{ ml} = \text{ l } \text{ ml}$

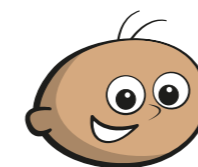
e) $1 \text{ l} - \text{ ml} = 300 \text{ ml}$

- 8 Tommy and Rosie each have a measuring jug with some water inside.



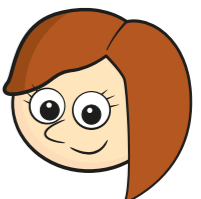
They want to put all their water into one jug.

Rosie decides to pour her water into Tommy's jug.



I do not think it will fit!

Tommy



Of course it will!

Rosie

Who is correct? _____

Talk about it with a partner.