



# St Joseph's Catholic Primary School

## Weekly Newsletter

### Friday 28th May 2021



#### In this issue...

- Prayers First For Holy Communicants
- Farewell to Mrs Steele
- Mrs Sagajlo
- School Lunches
- Year 6 Sponsored Walk
- Contact Tracing
- Boreatton Park
- Skipping
- PMG
- Laudato Si
- Lates
- Celebrations
- In the Event ...
- Knights of St. Columba
- Year 3 Production
- Recycling
- The Saint
- Scooters
- Celebrations

#### Prayers for First Holy Communicants

Last year's and this year's First Holy Communion season has been disrupted due to COVID19. Some Parishes have managed to celebrate the Sacrament on time, others have had to wait to celebrate postponed masses. Either way, 'all good things come to those who wait', at Our Lady and St. Joseph's Church this Sunday, some of our children will have their First Holy Communion Mass for last year's group. There will be a string of masses coming up and I pray with all of you for the First Holy Communicants and their families.



#### Half term

As we come to the end of the penultimate half term, the staff and Governors wish you all a safe and peaceful break.



**Sunday 30th May 2021**

#### The Most Holy Trinity

**Gospel: Matthew 28:16-20**

*Go, therefore, make disciples of all the nations; baptise them in the name of the Father and of the Son and of the Holy Spirit, and teach them to observe all the commands I gave you. And know that I am with you always; yes, to the end of time.'*

#### Farewell to Mrs Steele

Mrs. Steele has been covering Mrs. Day's maternity leave in 3DS. Now that Mrs. Day is ready to return, Mrs. Steele is finally going to take a well-earned break and visit her friends and relatives in America, which she had planned to do but for the pandemic. I am sure you will want to join me in sending Mrs. Steele our best wishes and sincerest thanks.



#### Contacting the school office

If you have a general office related enquiry please use [ask@stjosephs.ealing.sch.uk](mailto:ask@stjosephs.ealing.sch.uk). Please do not use the Admin domain for correspondence as they will not be picked up.



# Love Learn Believe

## Mrs Sagajllo

Just as we were about to have our full complement of adults in the Middle Phase, Mrs. Sagajllo was finally notified that she had been scheduled for an operation. Mrs. Sagajllo has been struggling with a painful hip for quite a while. We wish her well and a speedy recovery and I expect to see her running the Daily Mile with her class on her return!



## School Lunches – Year 3 to 6

We are very proud of our lovely school kitchen and it is great to see so many children are eating a healthy school lunch. The cost of a meal is £2.35 and must be paid for in advance. If your child does not eat a school lunch on a particular day then they are not charged. The school receives updates twice a day showing which children have not paid and how much is owed. Harrison's then invoice the school periodically for unpaid meals, currently the unpaid schools meals debt is £627.25. This is very high and money, essentially, is being diverted away from the children. To help you budget, here is a ready reckoner for the cost of meals for the remainder of the summer term:

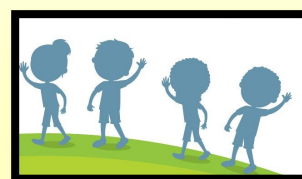


<b>Cost of a Meal</b>	<b>£2.35</b>
Weekly cost	£11.75
June 2021	£42.30
July 2021	£32.90

You cannot walk into a restaurant and eat the food without paying; it is the same at St. Joseph's. Payment should be made directly to Harrison's, which you can access via the link on our website.

## Year 6 Sponsored walk

This year's PGL trip had added unforeseen costs associated with it - the move to summer and increased coach prices. To make up the shortfall, the Year 6 children are going to do a sponsored event and any monies raised will go to make up the deficit, and go to charity. Please sponsor generously!



## Contact Tracing during half term

If your child tests positive for COVID-19 having developed symptoms within 2 days of being in school, please email [head@stjosephs.ealing.sch.uk](mailto:head@stjosephs.ealing.sch.uk) to assist in identifying close contacts and advising self-isolation. Your child may have been infectious whilst in school. If your child tests positive for COVID-19 during half term, having developed symptoms more than 2 days since being in school no action is needed except to follow NHS Test and Trace guidance.

## Boreatton Park

The Year 6 group returned last Friday from their five-day stay at PGL Boreatton Park. The group enjoyed themselves tremendously and made the most of all the activities on offer. The staff reported excellent bonding between the children and the children almost visibly matured during their week away. Today, the children in school were treated to a fantastic online assembly; it will no doubt whet their appetites for the school journey when it comes around for them. I would like to thank Miss. Bertorelli, Mrs. Ingham, Miss. Jaffer, Miss Kamya, Mrs. Kenny, Mrs. Mitchell, Mr. Sampaio, Ms. Tybora-Pawlus and Miss. Welland for giving up their time, away from their families, to accompany the children on the journey.



## Skipping

Do you want to JUMP INTO JUNE? Healthy living is one of our eco-topics this year. As part of this topic, the children and staff at St. Joseph's will be taking part in a skipping challenge for the month of June. As you know, exercise is an important aspect of our lives to keep both our heart and mind healthy. We would love it if parents could get involved as well! Please find below a beginners and intermediate/advanced timetable for adults. Email any of your skipping pictures to [year5@stjosephs.ealing.sch.uk](mailto:year5@stjosephs.ealing.sch.uk)

Happy skipping!

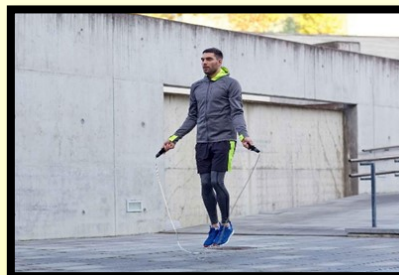
### JUMP ROPE INTO JUNE 30-DAY CHALLENGE (BEGINNERS)

DAY 1 - 50	DAY 11 - 150	DAY 21 - REST
DAY 2 - 150	DAY 12 - 235	DAY 22 - 385
DAY 3 - 90	DAY 13 - REST	DAY 23 - 150
DAY 4 - 150	DAY 14 - REST	DAY 24 - 425
DAY 5 - 125	DAY 15 - 225	DAY 25 - 150
DAY 6 - REST	DAY 16 - 150	DAY 26 - 465
DAY 7 - REST	DAY 17 - 310	DAY 27 - REST
DAY 8 - 165	DAY 18 - 150	DAY 28 - REST
DAY 9 - 150	DAY 19 - 350	DAY 29 - 500
DAY 10 - 200	DAY 20 - REST	DAY 30 - 150



### Jumping into June Challenge

Day 1 - 100	Day 11 - 300	Day 21 - rest
Day 2 - 300	Day 12 - 475	Day 22 - 775
Day 3 - 175	Day 13 - rest	Day 23 - 300
Day 4 - 300	Day 14 - rest	Day 24 - 850
Day 5 - 250	Day 15 - 550	Day 25 - 300
Day 6 - rest	Day 16 - 300	Day 26 - 925
Day 7 - rest	Day 17 - 625	Day 27 - rest
Day 8 - 325	Day 18 - 300	Day 28 - rest
Day 9 - 300	Day 19 - 700	Day 29 - 1000
Day 10 - 400	Day 20 - rest	Day 30 - 300



**Love Learn Believe**



## PMG

We have been asked by PMG one of our uniform suppliers to deliver the following message to parents.....

The in-store appointment system which we ran last year was so successful and met with such amazing feedback from parents that we have decided to run the stores the same way this year. Appointments are available to book on our website now and we highly recommend that new starters book appointments as soon as they can. However we found that the appointment system came as a surprise to those further up the schools and so we would implore you to let them all know that they need to book appointments or they may well find themselves queueing outside the store as we continue to operate a social distanced environment with a limited number of people in the shop at any one time. The cut off date of 12<sup>th</sup> August. After this date we cannot guarantee to be able to provide uniform in time for children going back to school. We are urging parents not to leave buying school uniform until the last minute especially the older children.



## Laudato Si' project – Caring for our common home

Did you know that the month of May is also the 'Local and Community History' month across the UK? The mission of the Historical Association, which is a charity registered by the Royal Charter, is to inspire, enable and encourage people across all walks of life to get involved with the history of their communities and local areas. We are very lucky here in Hanwell to be part of a vibrant, caring community and live in an area steeped in history; some of our school buildings are over 100 years old! By taking an interest in our community, we will be more motivated to look after it by remembering small actions like putting our rubbish in bins and walking to school.



**Challenge:** Can you research and visit some part of Hanwell that is new to you? Why not draw a sketch of Brunel's awe-inspiring viaduct, find out what the Grand Union Canal was used for in the past or find out more about the history of St Joseph's school building and church?

Please do share your ideas with us by emailing your photos in to school and we will upload them to the Year Group page.

**Let's make a difference – together!**

## In the event...

In the event that somebody in your household wakes up with a fever ( $>37.8^{\circ}\text{C}$ ), or a new, continuous cough or a loss of the sense of smell or taste do not send your child to school. Immediately inform the school via email or phone and then book a test for the person. The whole household must then self-isolate. If the test returns negative and nobody has any ongoing symptoms, the child can return to school and the household no longer needs to self-isolate. If a positive result is returned, the household must self-isolate for 10 days and resume normal activity after 10 days as long as they have been symptom free for 48 hours.

If your child has a sniffle, runny nose or is sneezing, they are not coronavirus symptoms and your child should come to school if well enough.



# Love Learn Believe

## Late Arrivals and Pick Ups

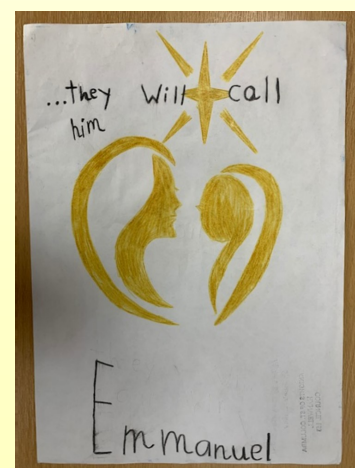
Every so often, one can have a mishap or an unforeseen incident can occur which results in arriving late for school. However, this week on average we have had 18 children arrive late for school in the morning! This can be upsetting for the child, is disruptive for their teacher and classmates when they go into the class late, and also disrupts the office staff who have to take your child in. If you arrive to school late, the sensible thing to do is to leave home earlier! Quite often the children who arrive late in the morning, are not collected at the correct time at the end of the school day. When late arrivals and pick-up becomes habitual, it feels like we are being taken advantage of.



From September, I am considering sending children to the After School Club where a fee will be charged for looking after your child.

## Knights of St. Columba

A little while ago, the Knights of St. Columba organised an art competition to depict an Easter scene. Many children entered the competition to celebrate their artistic skills...And to hopefully win a prize! Our winners, in no particular order were Julia in 1SW, Estelle in 5W, Lena in 5B, Alan F in 1SW, Amelia in 6B. One picture was a leftover from the Nativity competition. All the children received a prizes ranging from £10 to £30. I wish I had concentrated in school during my art lessons as much as our winners clearly do! Well done to all and thank you to the Knights of St. Columba for organising the competition.



## Year 3 Production

Wow! What a performance! I would like to congratulate all of Year 3 on their marvellous production of 'Wow! What a Year!' It was a lovely snapshot of our year made all the more authentic by the fantastic acting and the sharing of our real, shared experiences. I am sure that we can all connect with each scene. As well as praising the children, I congratulate the staff who had to produce this in a different way – online. I believe a few grey hairs were grown when downloads did not quite go to plan. Thank you to Miss Reddin, Mrs Steele, Mrs Sagajillo, Miss Redhead, Mrs Dobbin, Mrs Smith, Miss Roberto and Mrs Bahadrian.



## Recycling

Many staff members have tried to get recycling up and running in school. Many years ago, we had boxes and children used to collect the recycling and put it into the recycling bins. As this became more popular, schools began to get charged for the service; not surprisingly, many schools stopped. During lockdown, Virendra Sharma MP got wind of this and I found out that we could actually put our recycling into our 'cardboard' bins; we never knew! Now we have 22 brand new recycling bins and our Eco Worriers will empty them every so often. Thank you to Ms O'Donnell, Miss. Reddin, Mrs. Whybrew and Miss. Barry for spending time over the years trying to re-introduce recycling to our school.



## The Saint

Please look out for the edition, it is packed full of super articles and information about our school. Thank you to the children and to Miss. Bobbin and Miss. Bertorelli for organising.

## Scooters

May I remind children and parents that there is no riding of scooters on the school grounds. Children must walk their scooters to and from the scooter parks.



**Love Learn Believe**

## Celebrations

Headteacher awards are presented each week to children who the staff think have put that little bit of extra into their work. Well done to the children listed below:

Class	Name	Reason
1B	Alicja	For brilliant work on doubling and halving.
1S	Alice	For working hard to bring positivity to 1S!
1SW	Jack	For working hard with his phonics and reading.
2AL	Thomas	For always trying his best in every lesson.
2B	Kacper	For his excellent focus in maths to catch up with learning missed during absence.
2SL	Joy	For her excellent contributions in class discussions and thoughtful ideas. Thank you!
3AR	Ethan	For making a huge improvement with his handwriting and the presentation of his work!
3DS	Marcel	For making the effort to complete his work on time.
3SR	Lewis	For fulfilling a last minute role in the production so well – thank you!
4B	Tala	For writing a good poem about being scared.
4C	Isabelle	For superb response to Climate Change science question.
4S	Suzanna	For being well mannered and helpful at all times.
5B	Lena	For her amazing effort at researching Greek gods and goddesses and creating a fascinating fact file!
5S	Nicole	For always trying her hardest in every subject. Great work!
5W	Karol	For always being on task in maths lessons and producing a substantial amount of work.
6B	Alexandra	For her determination and perseverance when facing her fears at PGL.
6I	Ephraim	For facing many challenges head on and showing resilience at PGL.
6J	Jakub	For listening well to PGL instructors and supporting his group members.

Good Disciple awards are given to children who have shown exceptional love and kindness to fellow pupils and are helping to build God's kingdom here and now. Well done to the children listed below:

Phase	Name	Reason
Lower	Josiah	For being kind to and gentle with others.
Middle	Christian	For living out the school ethos in all he does.
Upper	Rose	For living out St. Joseph's Catholic ethos on a daily basis, in everything she does.



**Request for your views on proposed scheme  
SCHOOL STREETS**

**To** Residents and businesses in and around scheme area  
**From** Ealing Council  
**Date** 10<sup>th</sup> May 2021  
**Subject** Experimental School Street for St Joseph's Catholic Primary School

Dear Sir or Madam,

Ealing Council wants to make the Borough a great place to live, work and spend time in. Good, sustainable transport is a fundamental part of the council's priorities to create 'Healthy Streets' that seek to reduce pollution and increase physical activity rates by providing safe, convenient alternatives to short car journeys.

Our Transport Strategy aims to build a positive legacy to enhance the environment and improve public health by focusing on 'active travel' (walking and cycling). We will improve streets and transport infrastructure to reduce dependency on cars to prioritise active, efficient and sustainable travel modes, making Ealing a healthier, cleaner, safer and more accessible place for all.

Ealing Council would like to make changes to the streets in your area, called 'a School Street'. We have launched an online survey to help residents and businesses have their say on the proposed scheme. Your feedback will be used to consider any changes that need to be made and help us to make the decision on how to proceed.

Please complete the survey at [www.ealing.gov.uk/newschoolstreets](http://www.ealing.gov.uk/newschoolstreets) from 24th May until midnight on 14<sup>th</sup> June.

**What is a School Street?**

A School Street is where the streets around a school are closed to most traffic at school opening and closing times. Closing the streets to school and through traffic helps to achieve a safer, more pleasant environment for everyone, whilst maintaining access for residents and businesses within the designated zone, and all pedestrians and cyclists.

We implemented 12 experimental schemes for 14 schools last Autumn. Our current experience shows that residents often enjoy their streets more because the School Street reduces traffic, stops school related parking issues (e.g. across driveways) and helps to improve air quality in the local area, as there are fewer cars and more families use active travel for their school journey.

Understandably, residents outside the zone may be concerned about displacement of traffic. However, our experience, and that of other London Boroughs, indicates that traffic tends to evaporate rather than be displaced. Schools will encourage families to use active modes of travel for all or part of their school journey, thereby reducing car use. Parking by those who do need to drive will be dispersed over a much wider area and should not affect residents.

For further information and our FAQ document to answer many queries about the scheme, please visit our website [www.ealing.gov.uk/ealingschoolstreets](http://www.ealing.gov.uk/ealingschoolstreets)

We hope to implement the School Street for St Joseph's Catholic Primary School in September 2021. It will involve the introduction of **temporary barriers** at the locations shown on the map overleaf, **between 8:30 – 9:00am and 2:45 – 3.30pm**, Monday to Friday. The School Street will not operate





on weekends or during school holidays. The barriers are movable and will be managed by volunteers from the school. Outside School Street operational hours, the barriers will be removed.

#### Vehicle access to the scheme

Only residents living within the scheme and vehicles registered at businesses within the scheme, as indicated on the map overleaf, will be able to access the School Street zone, during operational hours. Each household within the scheme will be issued with one School Street Permit, that they will show to the volunteer if they wish to enter the School Street when the barrier is in place. Additional permits for vehicles registered at a property within the school street, can be requested and details on how to do this will be sent prior to launch of the scheme. All School Street Permits are issued free of charge for eligible vehicles.

The impacts on refuse have been considered in collaboration with the council's Waste and Recycling team. As with all transport schemes, we also consult with the Emergency Services on any change to their routes and access.

Further details on vehicle access can be found in the FAQs that are available to download from our website [www.ealing.gov.uk/ealingschoolstreets](http://www.ealing.gov.uk/ealingschoolstreets)

#### Experimental Traffic Order and Consultation

This School Street will be implemented using an Experimental Traffic Order (ETO). Unlike our normal schemes, the statutory consultation for ETO's usually takes place during the **first 6 months after the scheme is installed**. An ETO is a standard legal document used across the country to enable installation of measures such as School Streets, pavement widening and cycle lanes or other innovative schemes.

By nature of the Traffic Order, this is an experimental scheme. This means that you can continue to provide feedback on your experience of the scheme during the first 6 months and, if required, changes can be made, before the Council decides whether or not to make it a permanent scheme. We will undertake a formal consultation on the scheme after the scheme has been in place for 6 months.

#### Funding of the scheme

The scheme is being implemented using funding made available to Transport for London (TfL) by Central Government. The funding is only available for schemes that help with social distancing and promote walking and cycling.

We look forward to receiving your feedback on the scheme through our online survey [www.ealing.gov.uk/newschoolstreets](http://www.ealing.gov.uk/newschoolstreets) Please complete the survey from 24<sup>th</sup> May until midnight on 14th June.

If you have any questions about this survey or the proposed experimental scheme, please email our dedicated mailbox at [schoolstreets@ealing.gov.uk](mailto:schoolstreets@ealing.gov.uk).

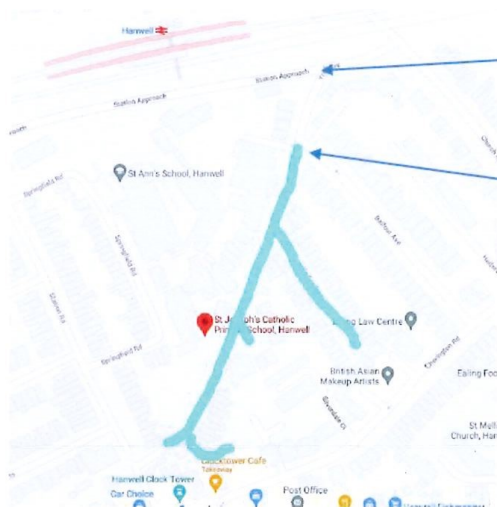
Yours faithfully,



**Mrs Nicky Batkin**  
**Senior School Travel Advisor**  
Transport Projects and Policy Team

## St Joseph's Catholic Primary School

### Location of barriers



Location of barrier 2 to allow drivers from Balfour Ave through - no one can enter from Station approach as they cannot exit safely

Location of barrier 1 for School Street closure. Residents inside this closure (blue) will require a permit. Southern end - modal filter – no barrier needed





**NHS**  
Whittington Health  
NHS Trust

## Join Our National Smile Month Event

Friday 28th May



A smile is a great asset and has so many life changing benefits. That's why it makes sense to give it the best care possible.

Brush along with the experts on our fun packed virtual event! And learn new ideas on how to look after your oral health, making healthier choices for your children and the whole family!

National Smile Month, a charity campaign by the Oral Health Foundation: [www.smilemonth.org](http://www.smilemonth.org)



### Topics Include:

- Meet the dental team
- Visit a dental practice virtually
- Brush along with us (Brushathon!)
- Sugar swap game
- 10 minute shake up activity with Sport at The Heart

### How to Join:

Date and time: Friday 28.05.21

- Nursery and school children up to year 2 join at 10.30 am

- Parents & carers join at 11 am

Click on the link below and enter the passcode:

<https://zoom.us/j/7714597430?pwd=NUVIRGU0Q3FaYkZCQlp0dU90eDhTz09>

Meeting ID: 771 459 7430

Passcode: Brush

**change  
4life**  
Eat well Move more Live longer



All Stars Cricket gives children the chance to play, learn great skills and meet new friends!

### Ealing Trailfinders CC

Trailfinders Sports Club, London, W13 0DD

5.30pm - 6.15pm, Thursdays (May 13th - July 1st)

Contact: [juniorscricket@ealingtcc.com](mailto:juniorscricket@ealingtcc.com)

Register at [allstarscricket.co.uk](http://allstarscricket.co.uk)

Includes Personalised Kit!

## Online AVAILABLE NOW

[www.pmgsschoolwear.co.uk](http://www.pmgsschoolwear.co.uk)

We strongly recommend ordering online this year

If you wish to use Click and Collect **YOU MUST MAKE AN APPOINTMENT TO COLLECT**

## HOW TO BUY SCHOOL UNIFORM THIS SUMMER

**BOOK EARLY  
BUY EARLY  
AVOID DISAPPOINTMENT**

BOOK YOUR APPOINTMENT OR BUY ONLINE

**BEFORE AUGUST 12TH**

After that date uniform may not be with you in time for the new term

## In Store BY APPOINTMENT

Appointments are now available to book online at [www.pmgsschoolwear.co.uk](http://www.pmgsschoolwear.co.uk)

If you do not have an appointment you may have to queue outside the store.

*This includes Refunds Exchanges and for Click and Collect*



**pmg**  
schoolwear