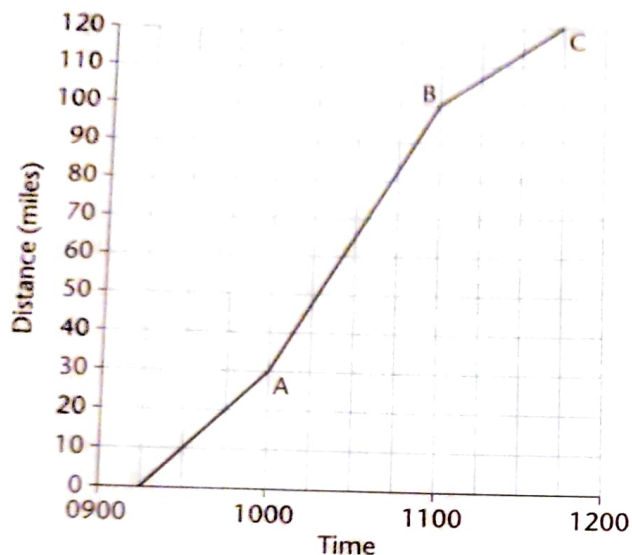


## LINE GRAPHS - JOURNEYS

**TARGET** To interpret line graphs showing journeys and use them to solve problems.

### Example

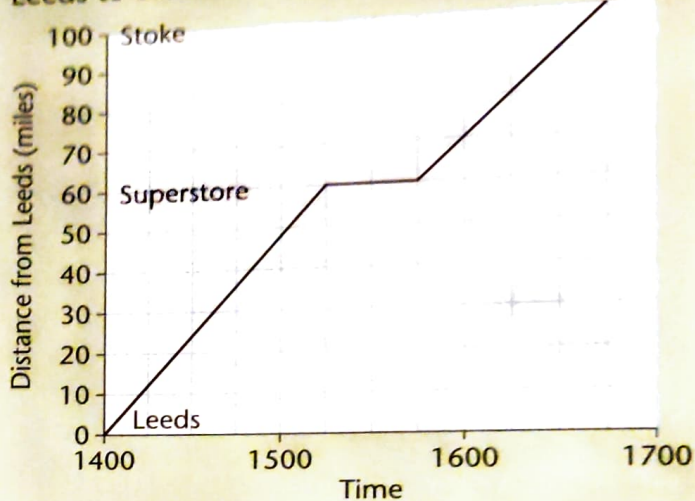
This line graph shows a car journey from the driver's home to Camford.



- When does the journey begin?  
Answer 09:15
- How far is it from the driver's home to A?  
Answer 30 miles
- How far had the car travelled at:
  - 9:30                      Answer 10 miles
  - 10:30?                  Answer 65 miles
- At what time does the car reach B?  
Answer 11:00
- What is the distance from B to C?  
Answer 20 miles
- Give the car's speed between A and B.  
Answer 70 miles per hour

### A

This graph shows Katina's car journey from Leeds to Stoke.

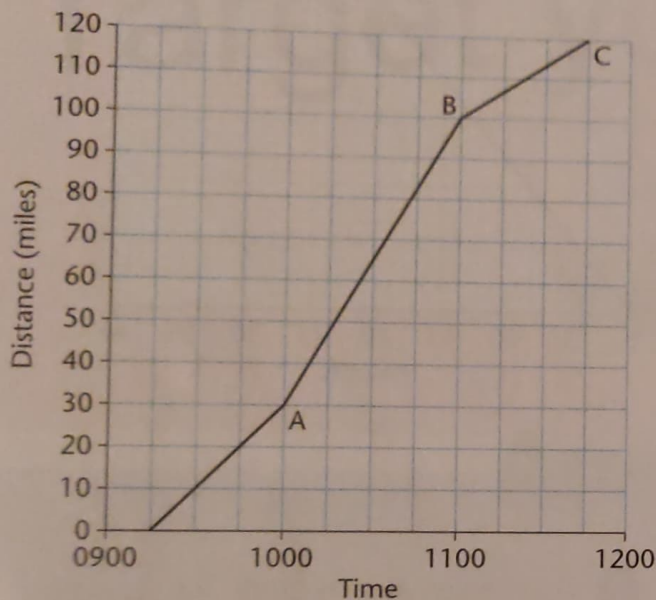


- How far is it from Leeds to Stoke?
- How far is it from the superstore to Stoke?
- At what time does Katina:
  - arrive at the superstore
  - arrive at Stoke?
- How long does she stop at the superstore?
- How long does the journey take:
  - from Leeds to the superstore
  - from the superstore to Stoke?
- How far has Katina travelled at 4pm?
- At what time does Katina pass a sign which tells her it is 10 miles to Stoke?
- Give the speed of the car from the superstore to Stoke.
- How long does the journey take altogether?

**TARGET** To interpret line graphs showing journeys and use them to solve problems.

**Example**

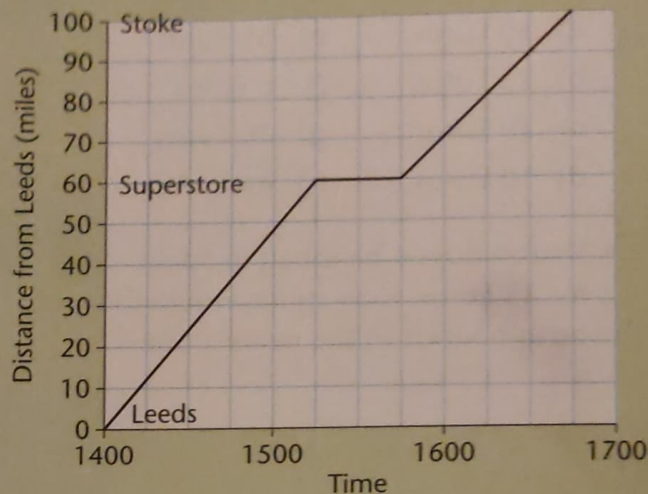
This line graph shows a car journey from the driver's home to Camford.



- 1 When does the journey begin?  
Answer 09:15
- 2 How far is it from the driver's home to A?  
Answer 30 miles
- 3 How far had the car travelled at:
  - a) 9:30                      Answer 10 miles
  - b) 10:30?                  Answer 65 miles
- 4 At what time does the car reach B?  
Answer 11:00
- 5 What is the distance from B to C?  
Answer 20 miles
- 6 Give the car's speed between A and B.  
Answer 70 miles per hour

**A**

This graph shows Katina's car journey from Leeds to Stoke.



- 1 How far is it from Leeds to Stoke?
- 2 How far is it from the superstore to Stoke?
- 3 At what time does Katina:
  - a) arrive at the superstore
  - b) arrive at Stoke?
- 4 How long does she stop at the superstore?
- 5 How long does the journey take:
  - a) from Leeds to the superstore
  - b) from the superstore to Stoke?
- 6 How far has Katina travelled at 4pm?
- 7 At what time does Katina pass a sign which tells her it is 10 miles to Stoke?
- 8 Give the speed of the car from the superstore to Stoke.
- 9 How long does the journey take altogether?