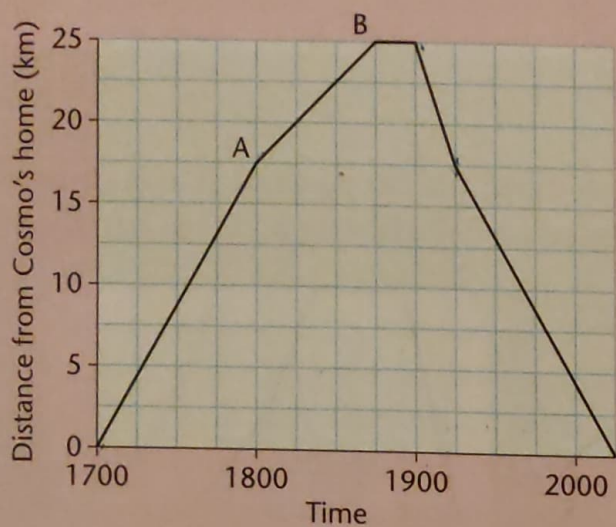


B

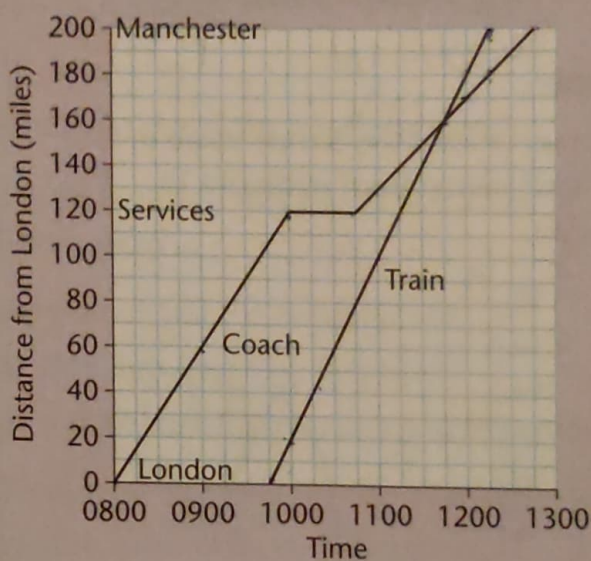
Cosmo cycles to the base of a tall hill (Point A), rides up to the summit (Point B), enjoys the view and then returns home.



- How far is it from Cosmo's house:
 - to the base of the hill (A)
 - to the summit of the hill (B)?
- At what time did Cosmo:
 - begin the return journey
 - arrive back at home?
- How long did he spend enjoying the view?
- How long did it take him to cycle:
 - from his home to the base of the hill
 - from the base of the hill to the summit?
- Give the speed in kilometres per hour at which Cosmo cycled on his return journey:
 - from the summit to the base of the hill
 - from the base of the hill to his house?

**C**

This graph shows the journeys made by groups of football fans travelling from London to Manchester by coach or train.



- At what time did:
 - the coach arrive at the motorway services
 - the train leave London?
- How far had the coach travelled before it stopped at the services?
- How long did the coach stop?
- How far had the train travelled when:
 - the coach arrived at the services
 - the coach left the services?
- How far apart were the coach and the train:
 - when the coach left the services
 - at 12:00
 - when the train arrived at Manchester?
- At what time had both coach and train travelled the same distance?
- What was the speed in mph of:
 - the coach from London to the services
 - the coach from the services to Manchester
 - the train?