

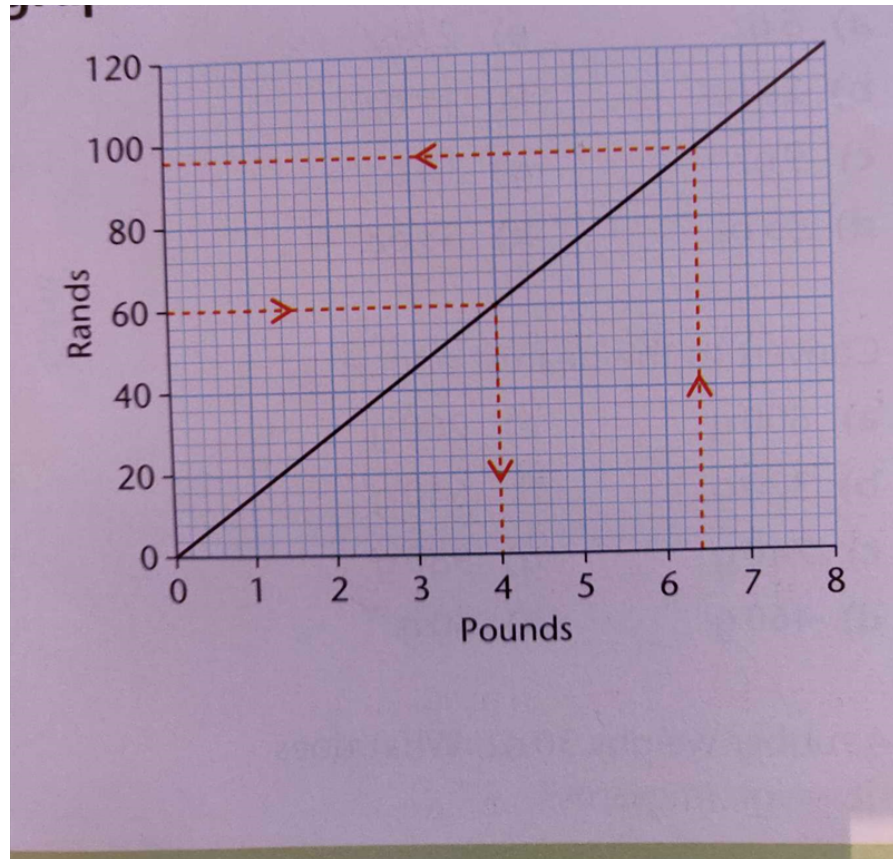
27.1.21

LO: Interpret line graphs involving currencies.

Today we are learning to use a line graph to **convert currencies...**

You will need to use all your graph skills...

...reading axis, using the graph labels, understanding the scale,
working from the x or y axis

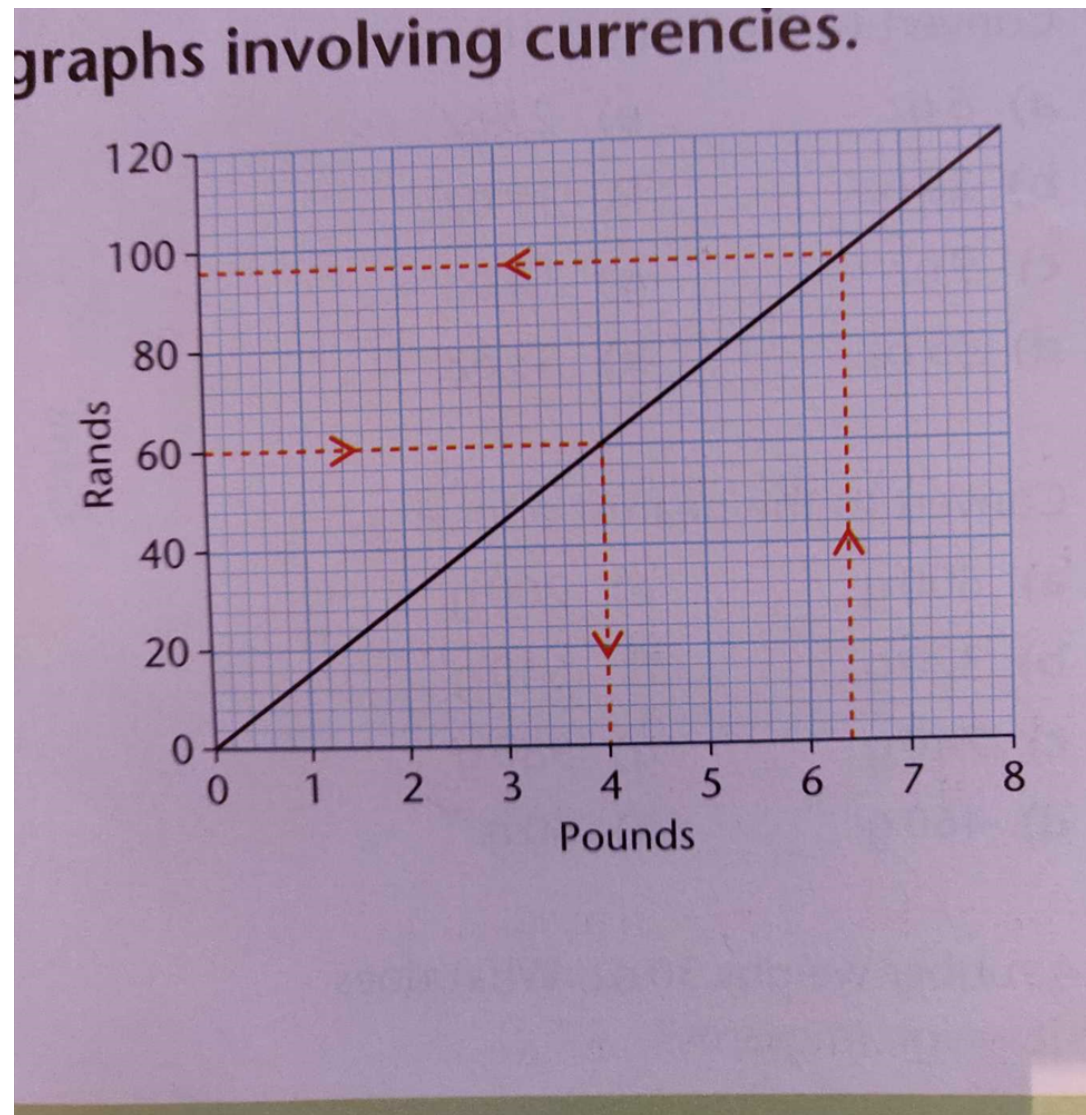


Which two currencies is this graph converting between?

Look at the scale on each axis... what do you notice?



Look at the red dotted lines showing you how to read across and up/down the graph; you may find it easier to print the graph and to use a ruler to do this

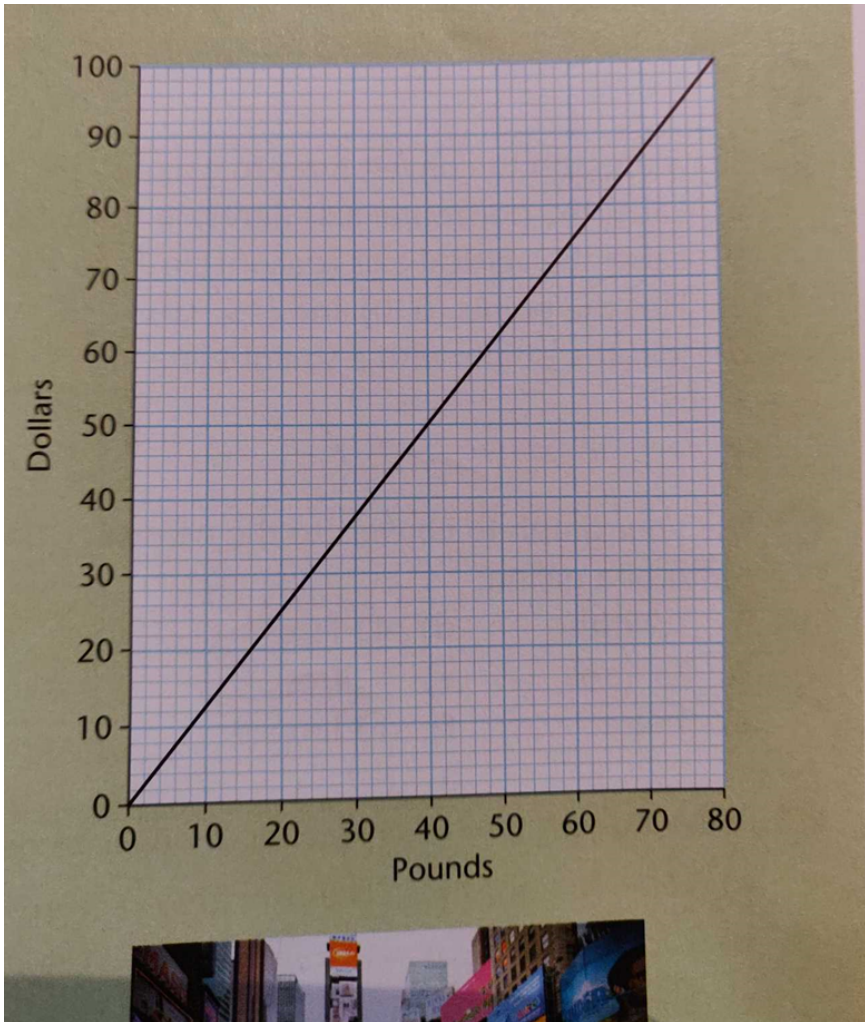


Can you convert the following?

£1 = __ Rands

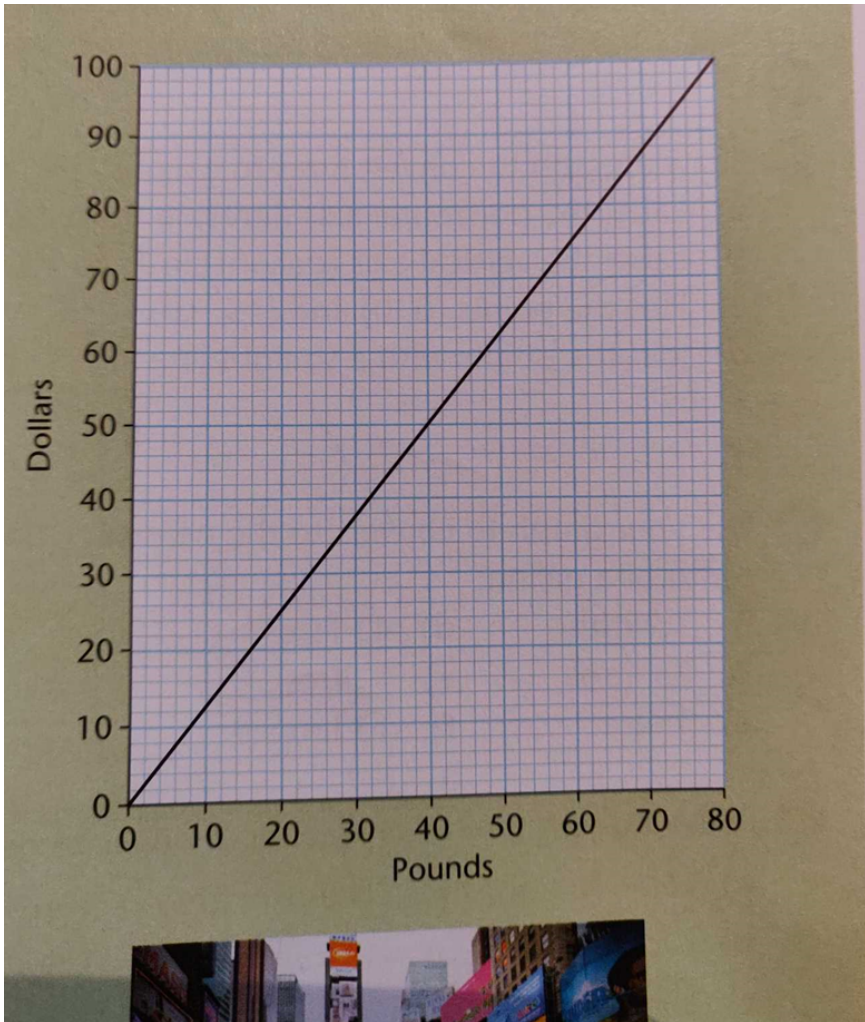
100 Rands = £__

£8 = ____Rands



Which currencies are we converting here in this line graph?

TALK PARTNERS: What does each little square represent in each axis?



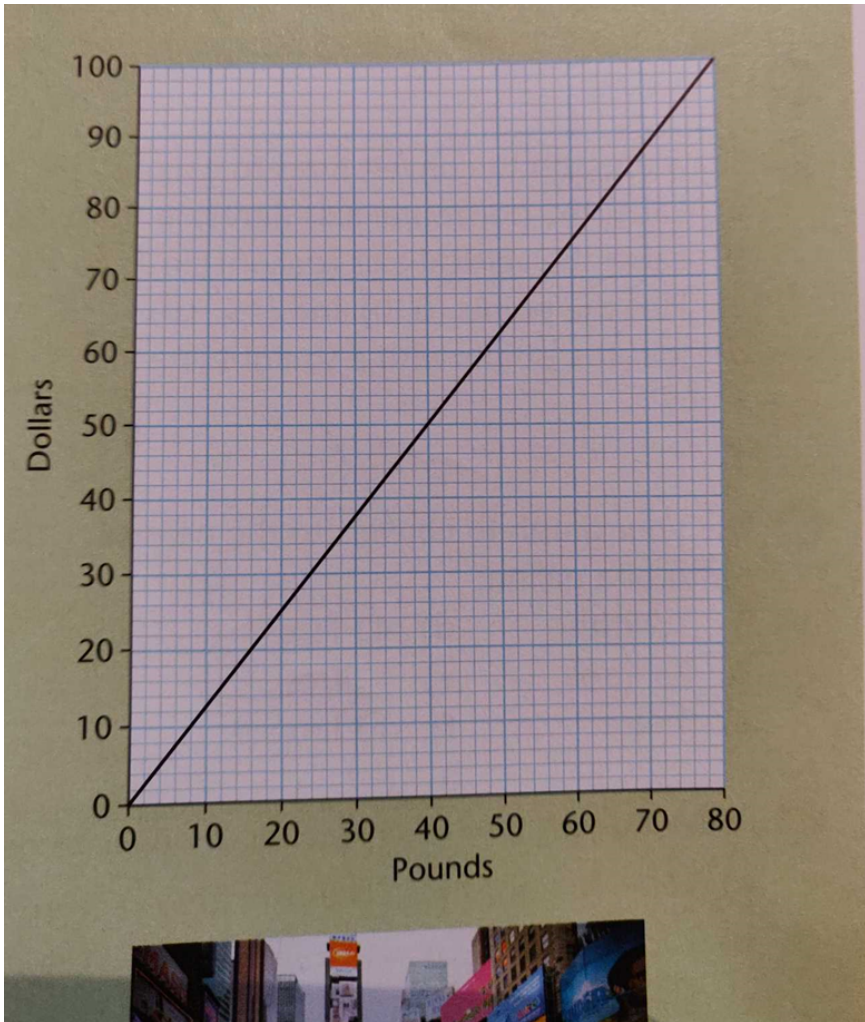
Can you convert the following to the nearest dollar:

a) £10

b) £30

c) £40

d) £64



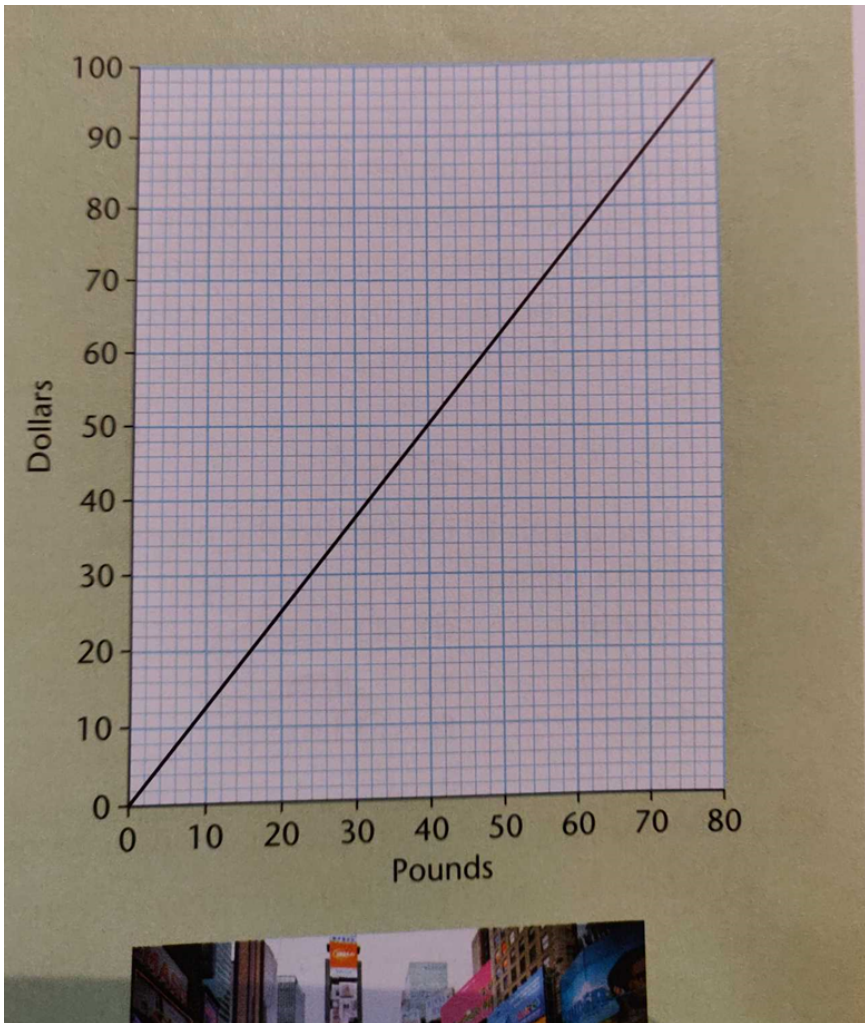
Can you convert the following to the nearest pound:

a) \$ 10

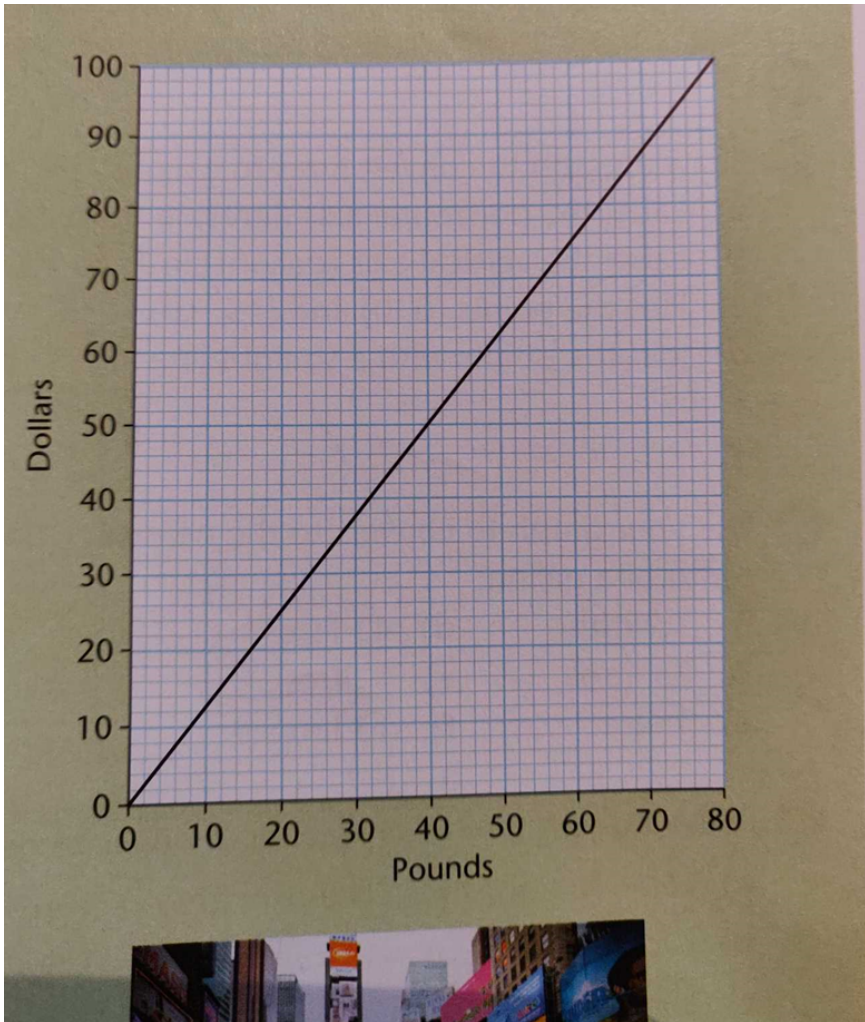
b) \$40

c) \$90

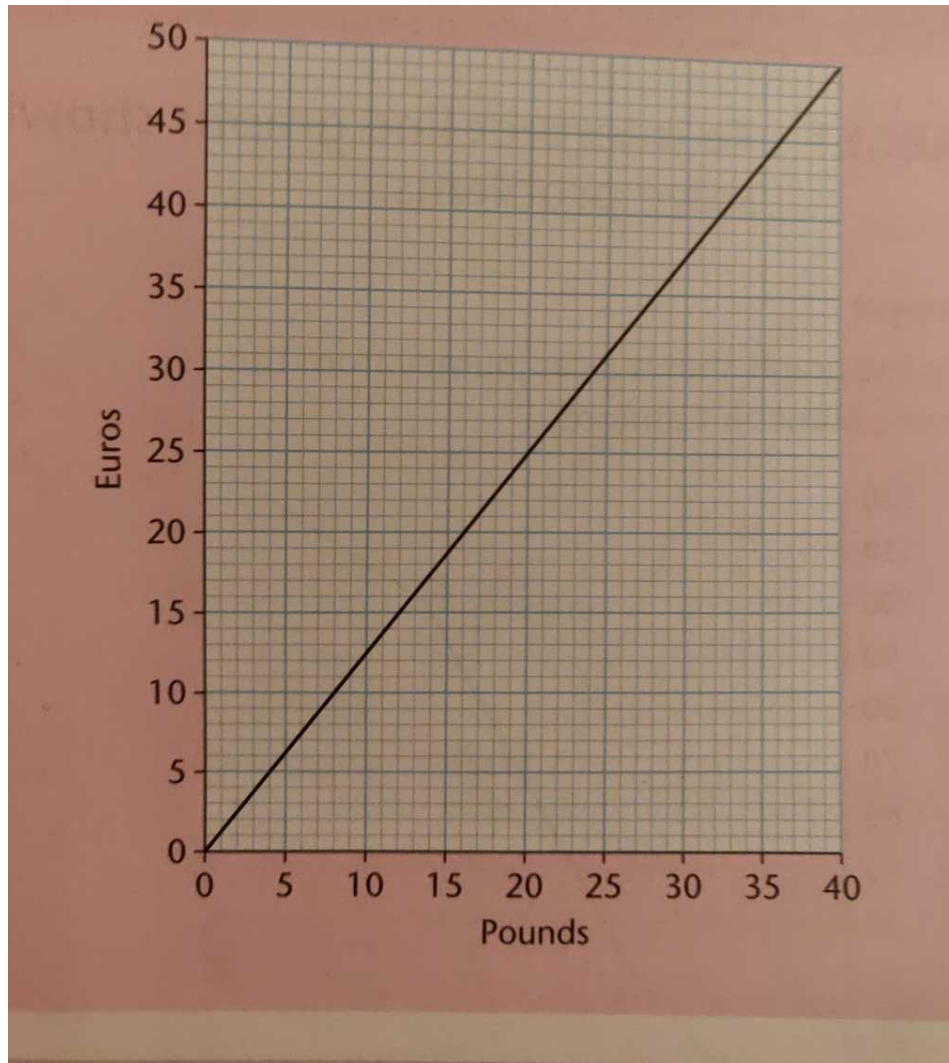
d) \$100



In New York, a yellow cab fare cost me \$10. How much would this be in pounds to the nearest 50 pence?



An American tourist in London pays his hotel bill of £72 in dollars. How many dollars does he pay?



Independent **task:**

Choose Task A, B
or C and answer
the questions in
your Maths book