

# Fuel Poverty Awareness

## Warm Homes Workshop

With Virendra Sharma, MP

Tania Jennings, Domestic Energy Officer  
Climate Action and Sustainability Team  
16 November 2020

PLACE



# The Problem

---

- What is Fuel Poverty?
- Causes of Fuel Poverty
- Consequences of Fuel Poverty
- Health Effects of Cold Homes
- Mental Health and Well-Being
- Who is Most at Risk?

# What is Fuel Poverty?

---



A household spends more than 10% of their disposable income on fuel

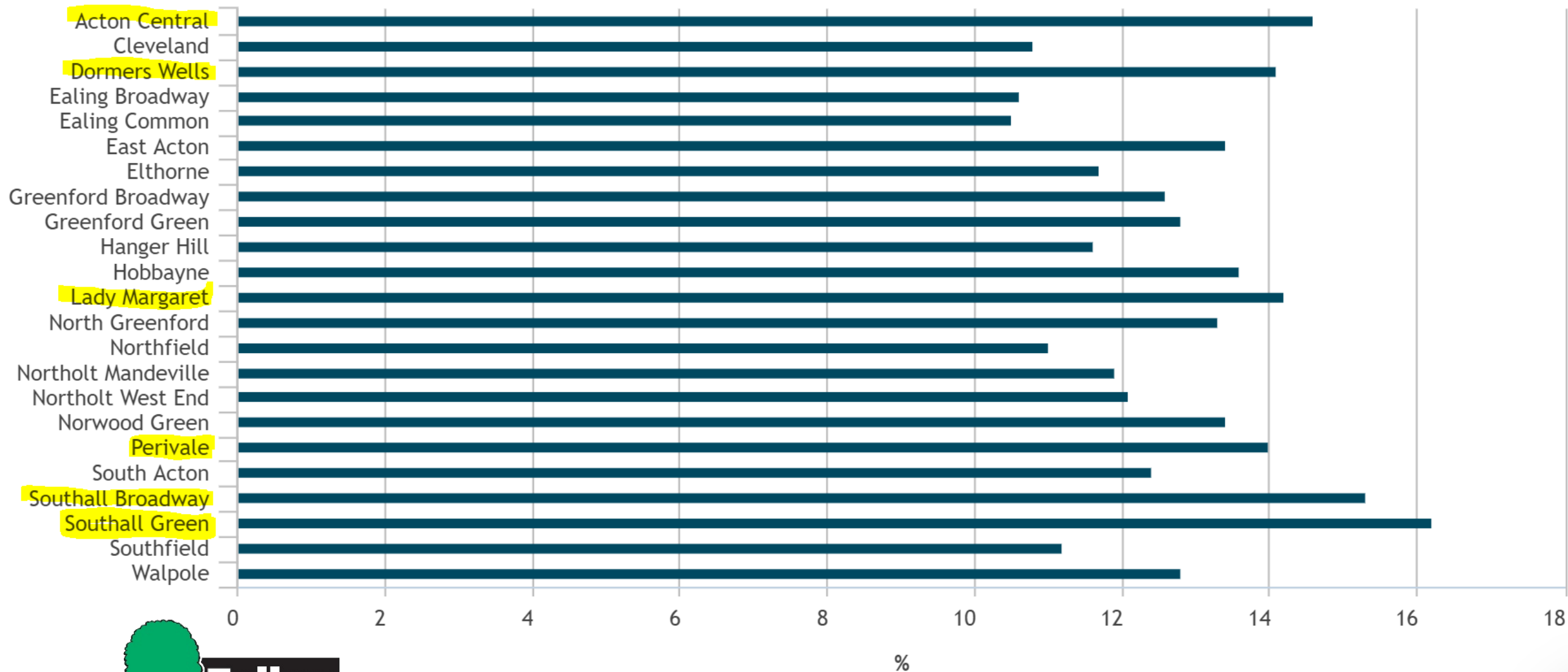
OR

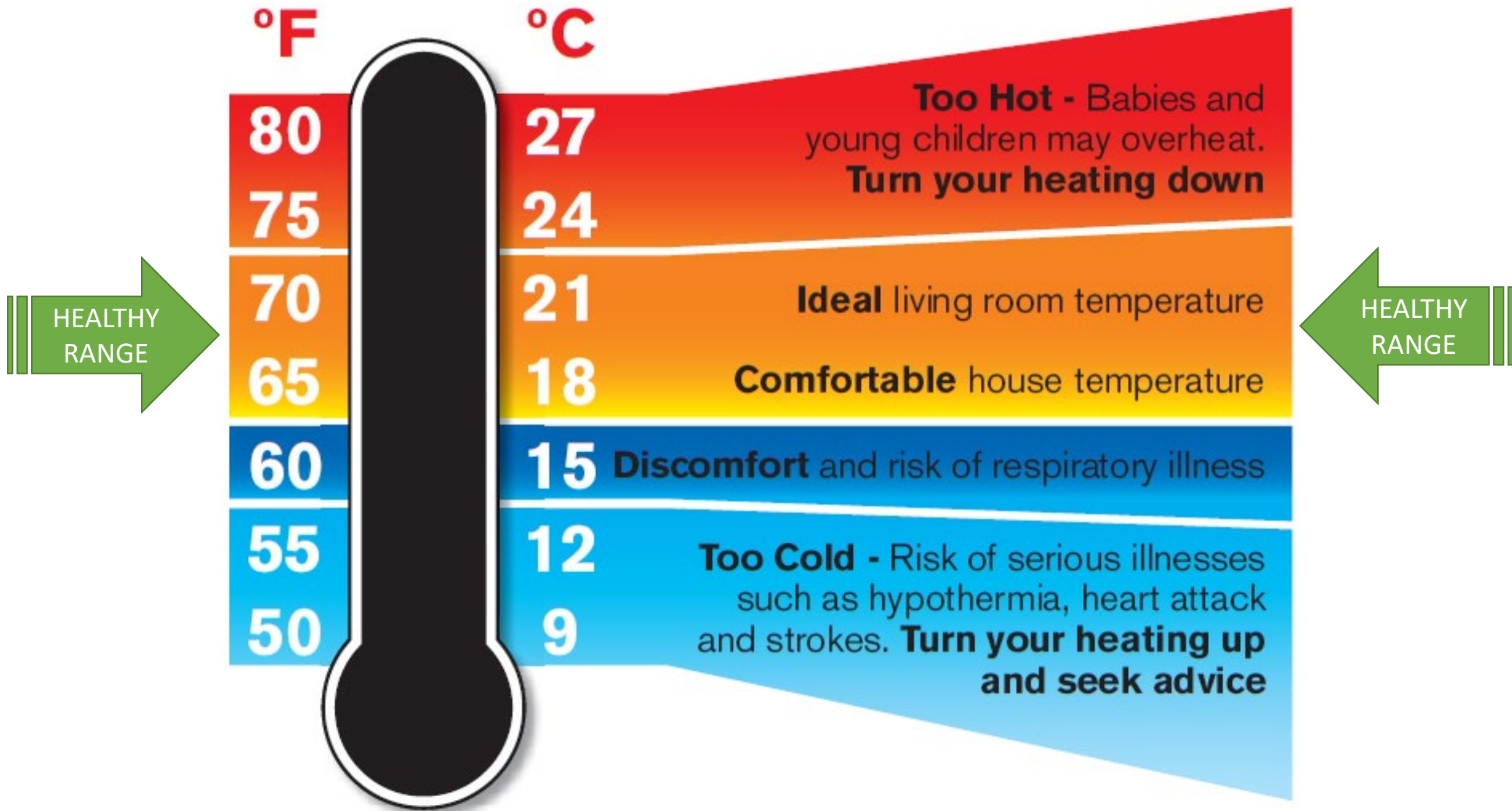
If a household spent enough to properly heat their home, they would fall below the poverty line.



# % of households in fuel poverty (%) (2018) for Wards of Ealing (London borough)

source: Fuel poverty sub regional statistics







# Causes of Fuel Poverty

---



## Inefficient insulation in homes



# Causes of Fuel Poverty

---



## Price of Fuel

90% of Britons list heating costs as their top worry



# Causes of Fuel Poverty

---



## Low EPC Ratings

Energy Performance Certificates (EPC) measure the efficiency of your home and are required when buying or selling a home.

Find your rating (for free) at the open

[EPCregister.com](https://www.epcregister.com) site.



# Consequences of Fuel Poverty

---



Older heating equipment often has higher maintenance costs and when broken down, residents may rely on expensive heating sources like portable heaters.

# Health effects of cold homes

---



- Heart attack and stroke
- High blood pressure
- COPD, Asthma, and respiratory infections
- Worsening arthritis
- Falls and other accidents
- Excess winter deaths

# Mental health and well-being effects

---

- Self Isolation
- Difficulty Studying
- Depression
- Financial Stress





# Who is most at risk?

---



**People on low incomes and those who spend most of their time at home, including:**

- Older people
- Disabled and vulnerable people, and those with a long-term illness
- Families with young children
- Unemployed people





# Some Solutions

---

- Healthy Homes Ealing
- Energy Company Obligation
- Green Homes Grant
  - Voucher Scheme
  - Local Authority Delivery Scheme
- Warmer Homes
- Collective Buying/Switching



**HEALTHY  
HOMES  
EALING**



# Healthy Homes Ealing

---



Advice, help and support for vulnerable people whose health may be affected by cold homes

Aims to reduce excess winter deaths & excess winter hospital admissions



Green Doctor consultations, small measure installation, large measure recommendations





# Make a Healthy Homes Ealing Referral

---

How do I refer people to Healthy Homes Ealing?

- 1) Call the free phone help line at: **0800 083 2265**
- 2) Online referral form ([ealing.gov.uk/healthyhomesealing](http://ealing.gov.uk/healthyhomesealing))
  - Self-referral
  - Agency referral



# Energy Company Obligation

---



- ECO is a government energy efficiency scheme to help those living in the coldest homes carry out efficiency measures.
- Funded by the Energy Companies
- Measures can be installed for free or through our ECOflex scheme which offers reduced prices for qualifying homes
- NEF and Healthy Homes Ealing hold a list of approved ECO installers in the borough

# Energy Company Obligation

---



- Healthy Homes Ealing can help to match residents with ECO (fully-funded) and ECO-Flex (partially-funded) grants to install:
  - Loft, Cavity Wall, and External Wall Insulation
  - Underfloor Insulation
  - New, efficient boilers
  - First-time central heating
  - Renewable Heating

# Green Homes Grant

---



- £2B National Government Energy Efficiency & Retrofit scheme
- GHG Voucher Scheme
  - £1.5B in funding, distributed directly to installers through Voucher system
  - Individual homeowners and landlords may apply for a grant of up to £5,000 to cover 2/3 of installation costs
  - Low-income homeowners in receipt of benefits may apply for a grant of up to £10,000 to cover 100% of installation costs
- GHG: Local Authority Delivery Scheme

# Green Homes Grant Voucher Scheme

---



## How does the Voucher scheme work?

- Visit [www.simpleenergyadvice.org.uk](http://www.simpleenergyadvice.org.uk) to check eligibility
- Share list of recommended measures with [TrustMark](#) registered installer to get a quote
- Upload quote to <https://www.gov.uk/apply-green-homes-grant>
- Works are carried out, installer uploads confirmation to GHG Site and is paid directly.



# Green Homes Grant Voucher Scheme



- You **MUST** install at least one 'Primary Measure' in order to install 'Secondary Measures'. Gas boilers are **NOT** part of the scheme.

## Primary Measures – At least one **MUST** be installed

### Insulation:

- Solid wall
- Cavity wall
- Under-floor insulation (solid floor; suspended floor)
- Loft
- Flat roof
- Room in roof
- Park home insulation

### Low carbon heat (where the home is suitably insulated):

- Air source heat pump
- Ground source heat pump
- Solar thermal
- Biomass pellet boilers
- Hybrid heat pump

## Secondary Measures – **MAY** be installed

### Windows and doors:

- Draught proofing
- Double/triple glazing (where replacing single glazing)
- Secondary glazing (in addition to single glazing)
- Energy efficient replacement doors (replacing single glazed or solid doors installed before 2020)

### Heating controls and insulation:

- Hot water tank thermostats
- Hot water tank insulation
- Heating controls (e.g. smart heating controls, zone controls, intelligent delayed start thermostat and thermostatic radiator valves)

# GHG: Local Authority Delivery Scheme

---



- Ealing Council is leading the West London GHG:LAD scheme and has been awarded £4.78M to carry out up to 700 retrofits (beginning in January) across the seven participating boroughs which include:



**Brent**



**Harrow Council**



**London Borough  
of Hounslow**



**THE ROYAL BOROUGH OF  
KENSINGTON  
AND CHELSEA**

# GHG: Local Authority Delivery Scheme

---



- The GHG:LAD Scheme is open to residents:
  - Living in EPC E, F, and G rated homes
  - Total Household income under £30,000 (including benefits)
- Up to £10,000 worth of work may be carried out, ECO measures can be used alongside GHG:LAD to increase the amount of measures that can be installed.
- Private and Social Landlords may apply on behalf of qualifying tenants for a £5,000 grant to cover 2/3 of work.

# GHG: Local Authority Delivery Scheme

---



- Call the free phone help line at: **0800 083 2265** to register your interest in the GHG:LAD scheme
- A webform and email address will be available soon for residents to submit their information.
- Look for announcements on [ealing.gov.uk](http://ealing.gov.uk), in the Around Ealing Magazine and at Ealing News Extra.



# Warmer Homes Scheme

---

Warmer  
Homes



Grant Scheme offering Ealing residents  
**FREE First-time central heating**

- Low-carbon heating systems (Air Source Heat Pumps, etc.)
- Insulation
- First-time double glazing
- Smart thermostats

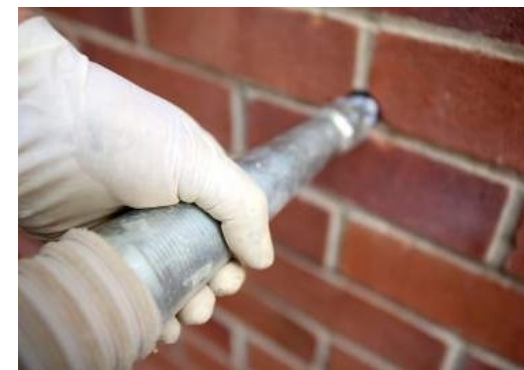
# Qualifying for Warmer Homes

Warmer  
Homes



## Eligibility Criteria (same as GHG:LAD)

- EPC rating of E, F, or G
- Total Household income <£30k
- On means-tested benefits
- Long-term illness or disabled
- Without a gas boiler/gas hook-up
- Using Electric Storage Heater
- Relying on Room Heaters
- Using Open Fire/Wood stove





# Make a Warmer Homes Referral

---

How do I refer people to the Warmer Homes scheme?

- 1) Call **0800 038 5737**
- 2) Visit [www.warmerhomes.org.uk](http://www.warmerhomes.org.uk)
- 3) Email: [info@warmerhomes.org.uk](mailto:info@warmerhomes.org.uk)

# Collective Switching & Buying Schemes

---

**LONDON  
POWER**

**Big London  
Energy Switch**

**ECO FURB**

The Low Carbon Home Service





# For further information contact

---

**Visit:** [www.ealing.gov/HealthyHomesEaling](http://www.ealing.gov/HealthyHomesEaling)  
for links and more information.

**Tania Jennings**

Domestic Energy Officer  
Climate Action and Sustainability Team  
Ealing Council