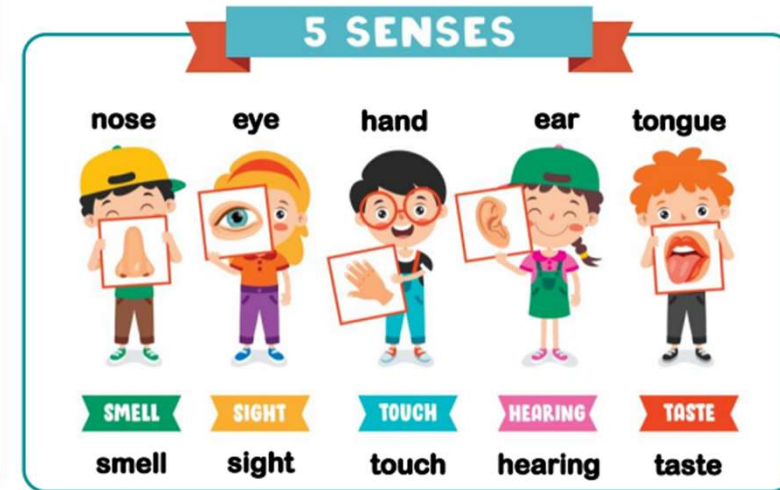
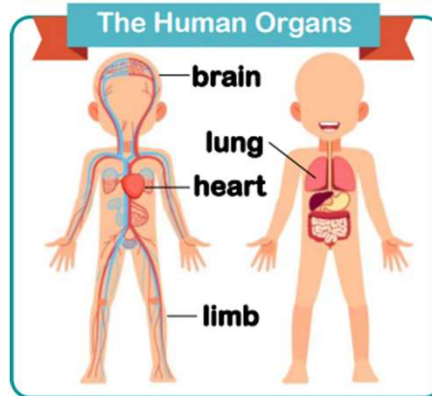
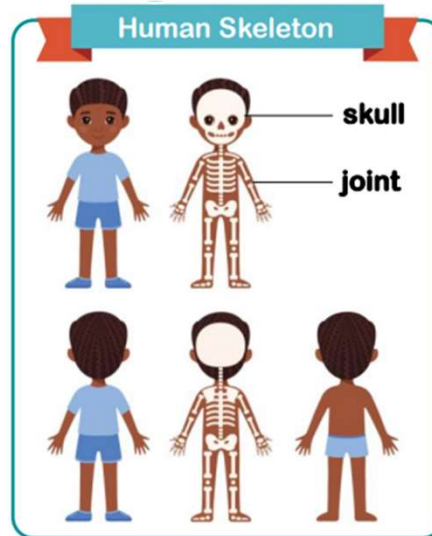


Year 1 Science: Animals including humans: All about Me

Key vocabulary

Head	The top part of a human or an animal's body
Body	The whole of a human or animal, including the head, brain, heart, legs and arms
Brain	The control centre of the body
Pupil	The black spot in the middle of the eye that lets in light, colour and shapes
Ear	The organs or body parts in humans and other animals that allow them to hear
Sound	Vibrations or sound waves that we can hear
Tongue	Moving organ in the mouth that is used for talking, tasting, eating and licking
Taste	The sense by which sweet, sour, bitter or salty flavours are detected through taste buds in the tongue



By the end of this unit you will:

- Know the basic parts of human body
- Know which part of the body is associated with which sense
- Know about eyes and sight
- Know about ears and hearing
- Know about the tongue and taste
- Know about the sense of touch
- Know how your nose smells



Enquiry

What 5 body parts do the senses come from?