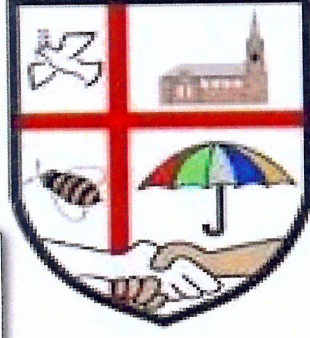




St Luke & St Philip's



**Easter Holiday**  
School closes at 2.00pm on Friday 31<sup>st</sup> March and reopens on Monday 17<sup>th</sup> April.



St Luke and St Philip's Primary School. A Church of England Academy

Newsletter 23<sup>rd</sup> March 2023

**Parent Support**  
If you would like to join onto one of the parenting groups on offer:  
**Henry (Healthy eating)**  
**IY Baby**  
**Healthy Families: Growing Up**  
**Healthy Relationships Programme**  
**Fussy Eaters etc.**  
Also HAF funding for Easter activities have been sent to some parents/Carers. Please make sure you sign up before the places go. All children will receive activities for 4 days and meals.  
Free Broadband is being offered to all families have a look on Class Dojo.  
Any families in need of advice or support please pop into school and see Miss Dean.

**St Luke and St Philip's attendance target is 96%**  
**Reception - 88.2%**  
**Year 1 - 92.7%**  
**Year 2 - 92.8%**  
**Year 3 - 92.9%**  
**Year 4 - 91.2%**  
**Year 5 - 93.3%**  
**Year 6 - 93.4%**  
**Overall - 92.1%**  
Please can we make sure that we ring the office before 9.30am to advise of absences. Well done to all the children that will be receiving the 100% attendance awards next week. Please make every effort to attend school every day.

**Have you booked your Parents/Carers Meeting for the Tuesday 28<sup>th</sup> March?**  
Contact your class teacher or the office who will happily make an appointment for you

**Easter Events**  
We would love to see you all for our Easter Service on the 31<sup>st</sup> March at 9:00am in the School hall.  
Join us for our Easter Bonnet Parade and Extravaganza! Prizes to be won for the best Easter Bonnet.  
This will take place on Friday 31<sup>st</sup> March at 1:00pm for all to enjoy.



# New to you

We have lots of new to you uniform in school of all different sizes if you need anything please call in on Friday before and after the assembly. All we ask is small donation for each item.

On the other hand, if you have any spare uniform that no longer is needed or does not fit we would happily appreciate the donation.



Sunday Gathering - 11am

Occurring

Every Sunday at 11 a.m. for 1 hour, 30 mins

Venue: St Wilfrid's Academy

Our gathering for one and all, worship, teaching and family life aimed at all ages and focussed on the different ways people connect. So whether Christianity is as familiar to you as your favourite tattoo or you're just beginning to explore faith, come along!

Do be prepared to bring a packed lunch too as we head off to the park or someone's house to hang out after the service!



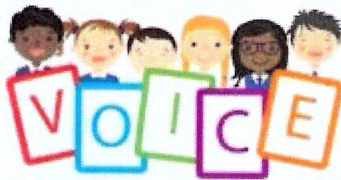
## Free After School Clubs

Monday	Year 1	Striking and Fielding
Tuesday	Year 2	Striking and Fielding
Wednesday	Year 3	Athletics
Thursday	Year 4,5 & 6	Athletics
Friday	KS2	Dodgeball

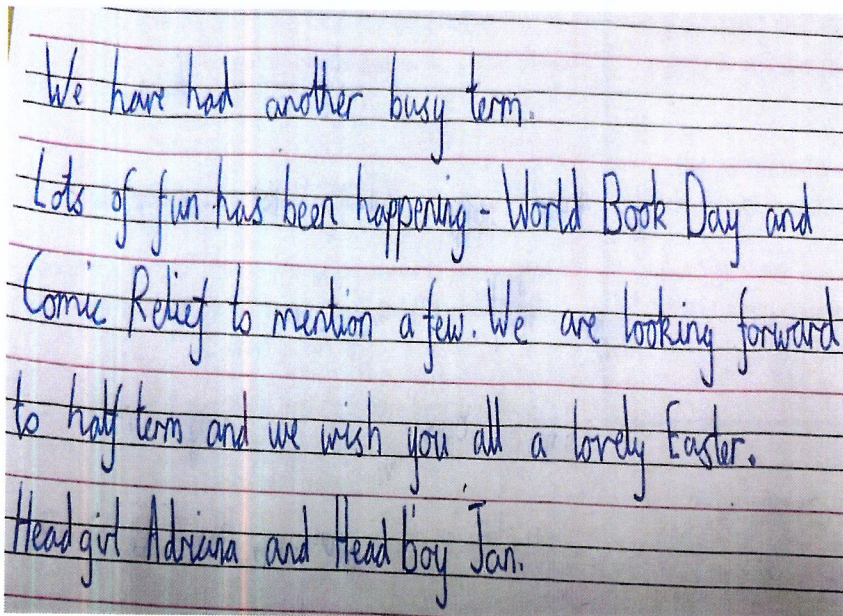
All clubs are free of charge.

Please contact school if your child would like a place.

## Pupil voice



Thank you to our Headboy and Headgirl for their lovely words.



## Uniform Reminder

Can we all remember we need to wear correct uniform including school trousers and shoes every day!

Girls should not be wearing makeup or jewellery for school & hair must be tied up at all times.



Our Worship theme for this term is Perseverance

Psalm 138:8

The Lord will fulfil his purpose for me; your steadfast love, O Lord, endures forever. Do not forsake the work of your hands.

